

KD-Validated Anti-LMAN1 Recombinant Rabbit Monoclonal Antibody



Catalog #: 61479

Aliases

LMAN1; Lectin, Mannose Binding 1; ERGIC53; ERGIC-53; MCFD1; FMFD1; F5F8D; MR60; Gp58; Endoplasmic Reticulum-Golgi Intermediate Compartment Protein 53; ER-Golgi Intermediate Compartment 53 KDa Protein; Intracellular Mannose-Specific Lectin MR60; Protein ERGIC-53; Coagulation Factor V-Factor VIII Combined Deficiency; Lectin, Mannose-Binding, 1; Lectin Mannose-Binding 1; GP58

Background

Gene Name: LMAN1

NCBI Gene Entry: [3998](#)

UniProt Entry: [P49257](#)

Application Information

Molecular Weight: Predicted, 58 kDa, observed, 53 kDa

Clonality: Rabbit monoclonal antibody

Clone ID: 23GB2835

Species Reactivity: Human, mouse, rat

Applications Tested: Western blotting (WB), flow cytometry (FCM), immunocytochemistry (IC)

Immunogen

A synthesized peptide derived from human LMAN1

Isotype

Rabbit IgG

Storage Buffer

Supplied in PBS (pH 7.4) containing 50% glycerol, and 0.02% sodium azide.

Storage

Store at -20 °C for one year.

Recommended Dilutions

Western Blotting (WB): 1:1,000-1:5,000

Flow Cytometry (FCM): 1:2,000

Immunocytochemistry (IC): 1:100-1:1,000

SUPPORT

SUPPORT@GENUINBIOTECH.COM
TEL: +1-540-855-7041

ORDERS

SALES@GENUINBIOTECH.COM
FAX: +1-540-855-7041

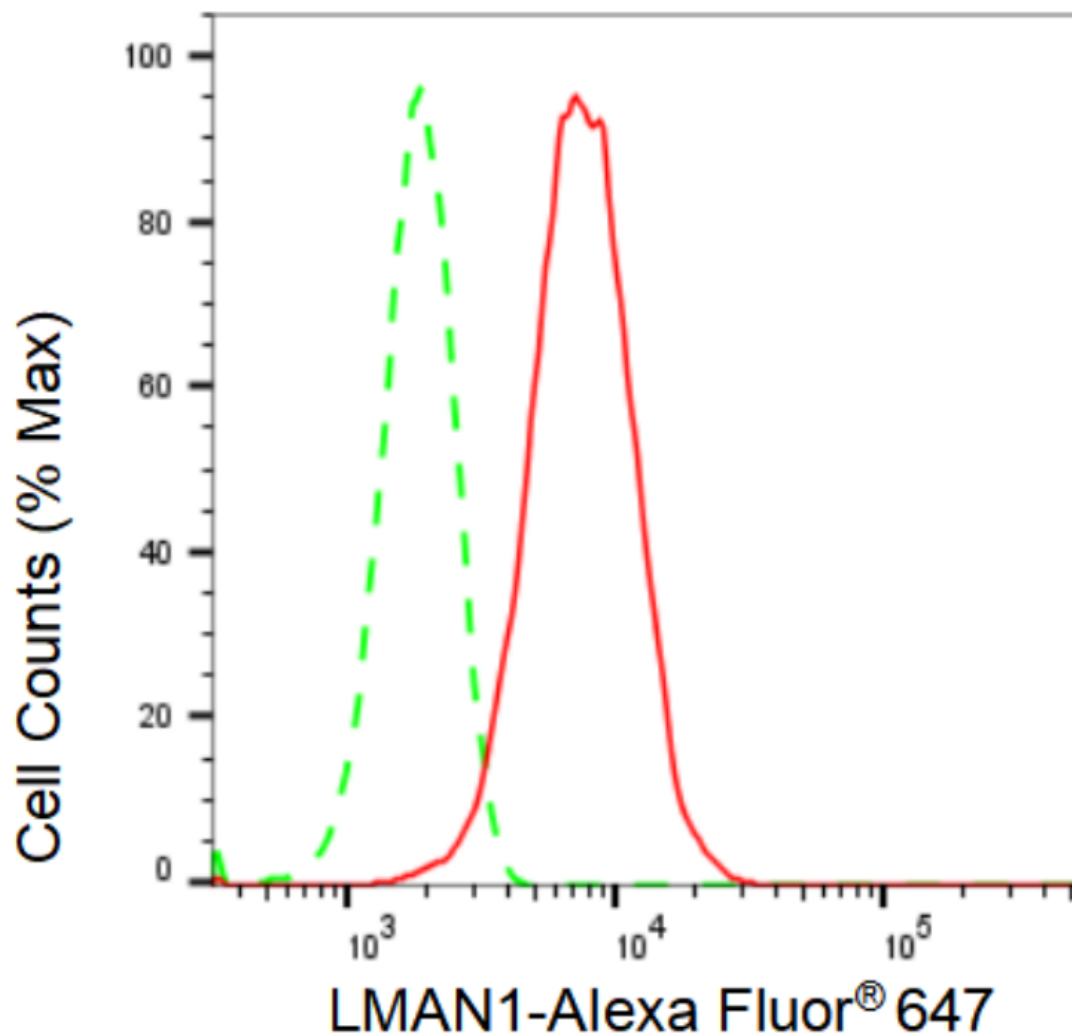
WWW.GENUINBIOTECH.COM

KD-Validated Anti-LMAN1 Recombinant Rabbit Monoclonal Antibody

PAGE 2

Note: This product is for research use only.

Validation Data



Copyright ©2024 Genuin Biotechnologies LLC

Flow cytometric analysis of LMAN1 expression in HepG2 cells using LMAN1 antibody (Cat#61479, 1:2,000). Green, isotype control; red, LMAN1.

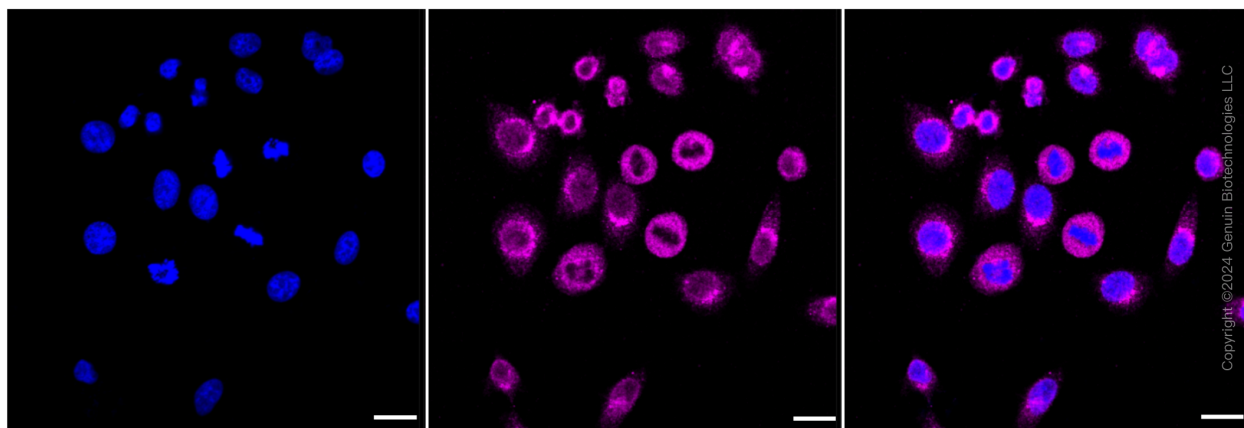
SUPPORT

SUPPORT@GENUINBIOTECH.COM
TEL: +1-540-855-7041

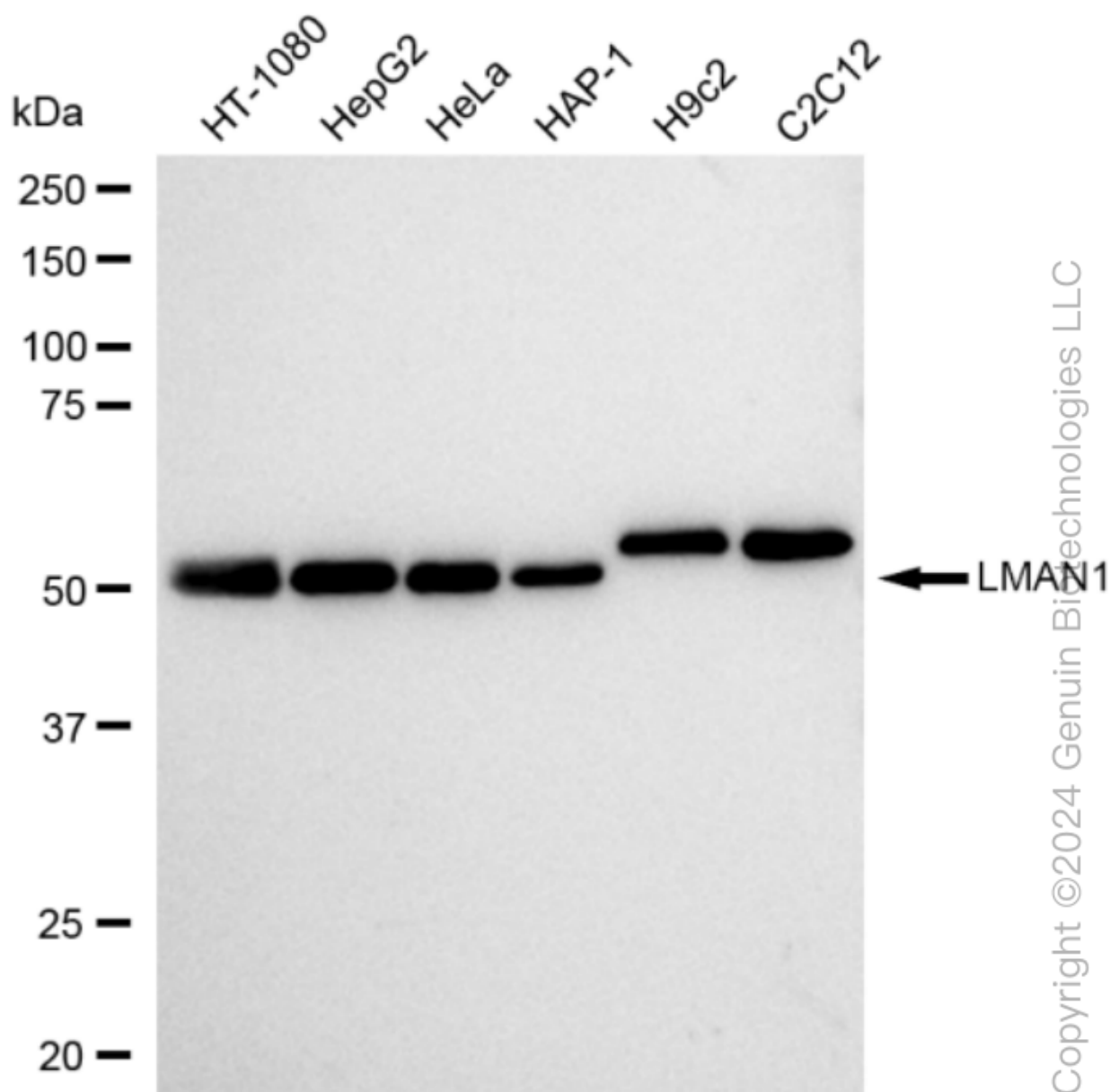
ORDERS

SALES@GENUINBIOTECH.COM
FAX: +1-540-855-7041

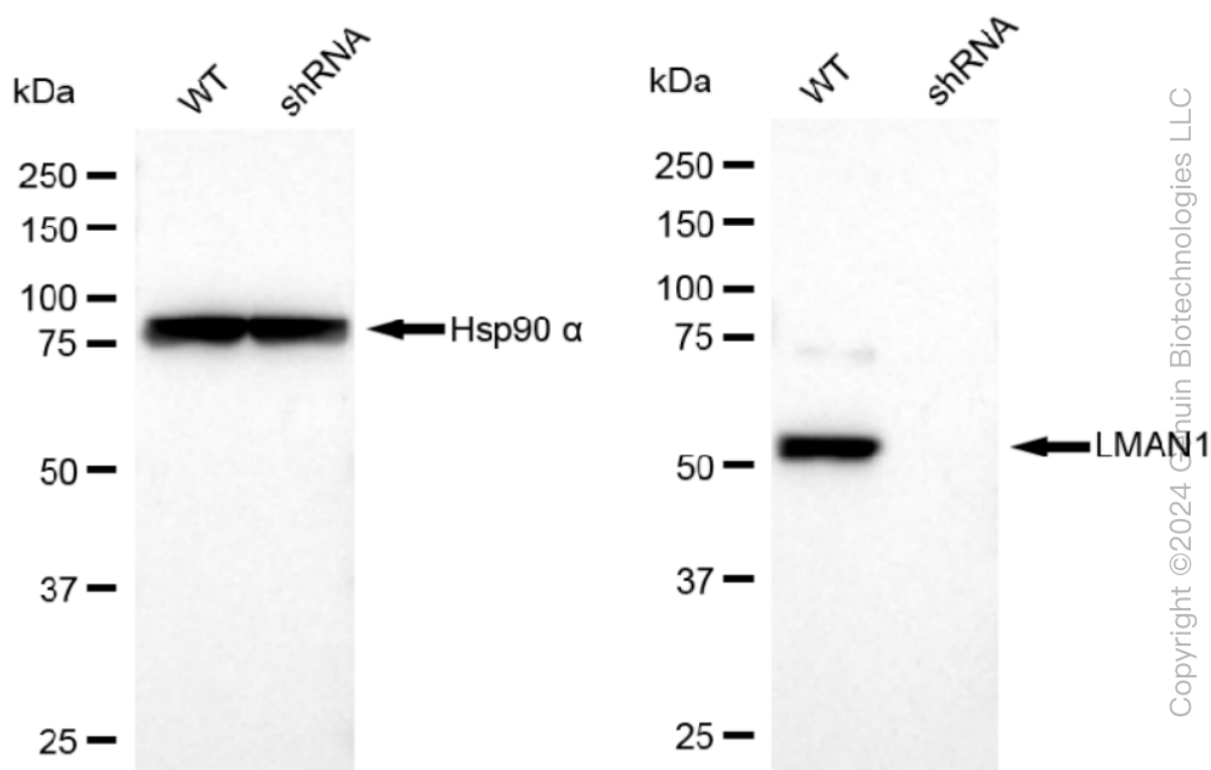
WWW.GENUINBIOTECH.COM



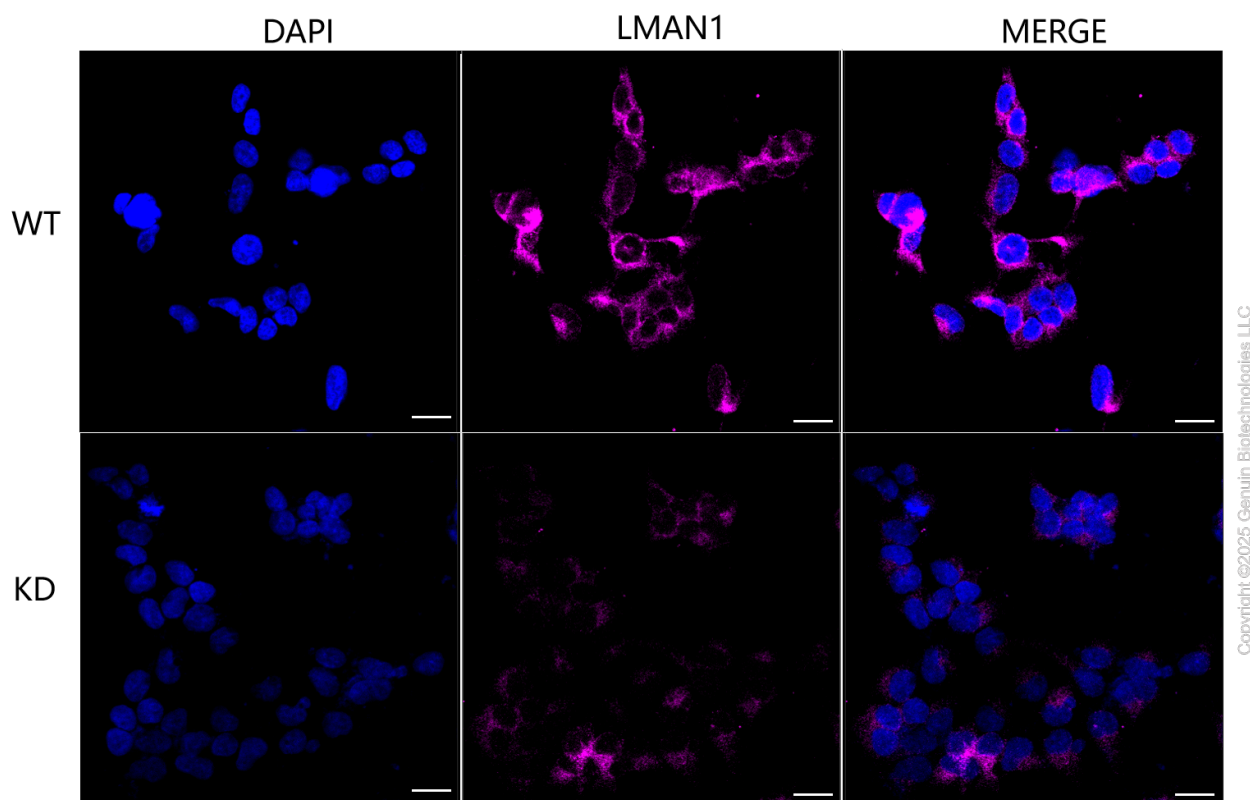
Immunocytochemical staining of HepG2 cells with LMAN1 antibody (Cat#61479, 1:1,000). Nuclei were stained blue with DAPI; LMAN1 was stained magenta with Alexa Fluor® 647. Images were taken using Leica stellaris 5. Protein abundance based on laser Intensity and smart gain: Medium. Scale bar: 20 μ m.



Western blotting analysis using anti-LMAN1 antibody (Cat#61479). Total cell lysates (30 µg) from various cell lines were loaded and separated by SDS-PAGE. The blot was incubated with anti-LMAN1 antibody (Cat#61479, 1:5,000) and HRP-conjugated goat anti-rabbit secondary antibody (Cat#201, 1:20,000) respectively. Image was developed using FeQ™ ECL Substrate Kit (Cat#226).



Western blotting analysis using anti-LMAN1 antibody (Cat#61479). LMAN1 expression in wild type (WT) and LMAN1 shRNA knockdown (KD) HeLa cells with 30 µg of total cell lysates. Hsp90 α serves as a loading control. The blot was incubated with anti-LMAN1 antibody (Cat#61479, 1:5,000) and HRP-conjugated goat anti-rabbit secondary antibody (Cat#201, 1:20,000) respectively. Image was developed using FeQ™ ECL Substrate Kit (Cat#226).



Immunocytochemical staining of HeLa cells using anti-LMAN1 antibody (Cat#61479, 1:1,000), Top panel: wild-type (WT); Bottom panel: LMAN1 shRNA knockdown (KD). Nuclei were stained blue with DAPI; LMAN1 was stained magenta with Alexa Fluor® 647. Scale bar, 20 μ m. Permeabilization: Triton.