

KD-Validated Anti-Lysyl oxidase like 2 Recombinant Rabbit Monoclonal Antibody



Catalog #: 61481

Aliases

LOXL2; Lysyl Oxidase Like 2; WS9-14; LOR; Lysyl Oxidase-Related Protein WS9-14; Lysyl Oxidase-Related Protein 2; Lysyl Oxidase-Like Protein 2; Lysyl Oxidase Homolog 2; Lysyl Oxidase-Like 2 Delta E13; Lysyl Oxidase-Like 2 Protein; Lysyl Oxidase Related 2; Lysyl Oxidase-Like 2; EC 1.4.3.13; EC 1.4.3; LOR2

Background

Gene Name: LOXL2

NCBI Gene Entry: [4017](#)

UniProt Entry: [Q9Y4K0](#)

Application Information

Molecular Weight: Predicted, 87 kDa, observed, 53,106 kDa

Clonality: Rabbit monoclonal antibody

Clone ID: 23GB2610

Species Reactivity: Human, mouse, rat

Applications Tested: Western blotting (WB), flow cytometry (FCM), immunocytochemistry (IC)

Immunogen

A synthesized peptide derived from human LOXL2

Isotype

Rabbit IgG

Storage Buffer

Supplied in PBS (pH 7.4) containing 50% glycerol, and 0.02% sodium azide.

Storage

Store at -20 °C for one year.

Recommended Dilutions

Western Blotting (WB): 1:1,000-1:5,000

Flow Cytometry (FCM): 1:2,000

Immunocytochemistry (IC): 1:100-1:1,000

SUPPORT

SUPPORT@GENUINBIOTECH.COM
TEL: +1-540-855-7041

ORDERS

SALES@GENUINBIOTECH.COM
FAX: +1-540-855-7041

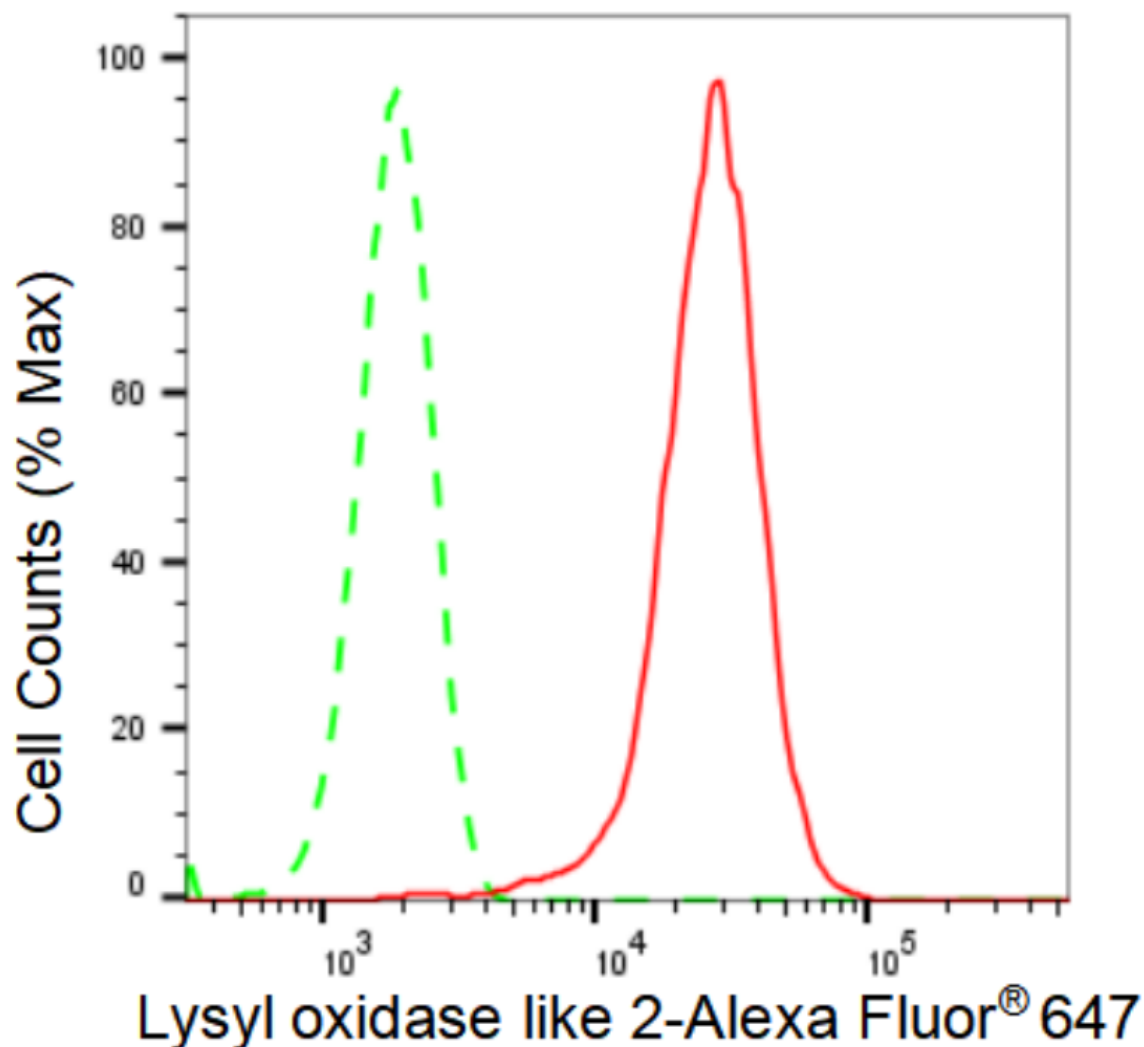
WWW.GENUINBIOTECH.COM

KD-Validated Anti-Lysyl oxidase like 2 Recombinant Rabbit Monoclonal Antibody

PAGE 2

Note: This product is for research use only.

Validation Data



Flow cytometric analysis of Lysyl oxidase like 2 expression in HepG2 cells using Lysyl oxidase like 2 antibody (Cat#61481, 1:2,000). Green, isotype control; red, Lysyl oxidase like 2.

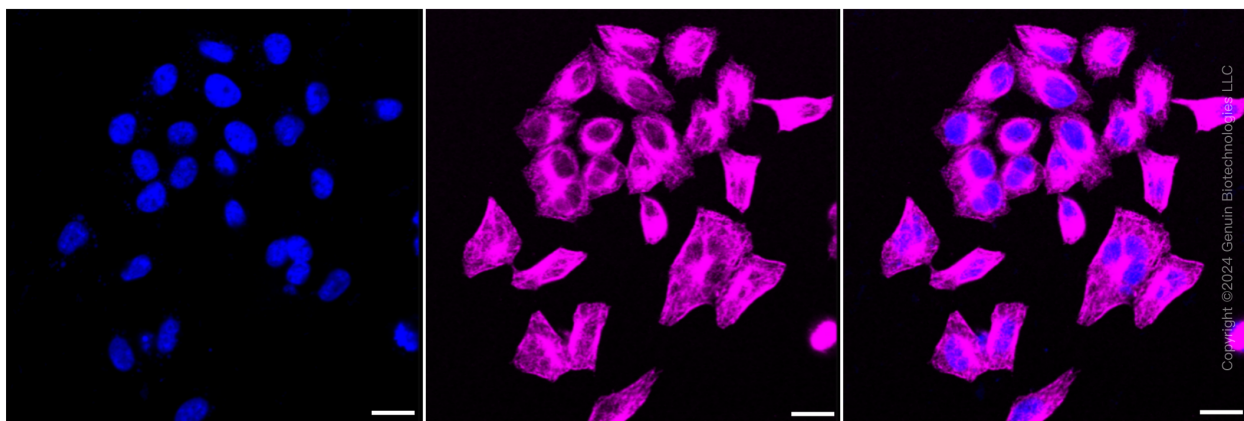
SUPPORT

SUPPORT@GENUINBIOTECH.COM
TEL: +1-540-855-7041

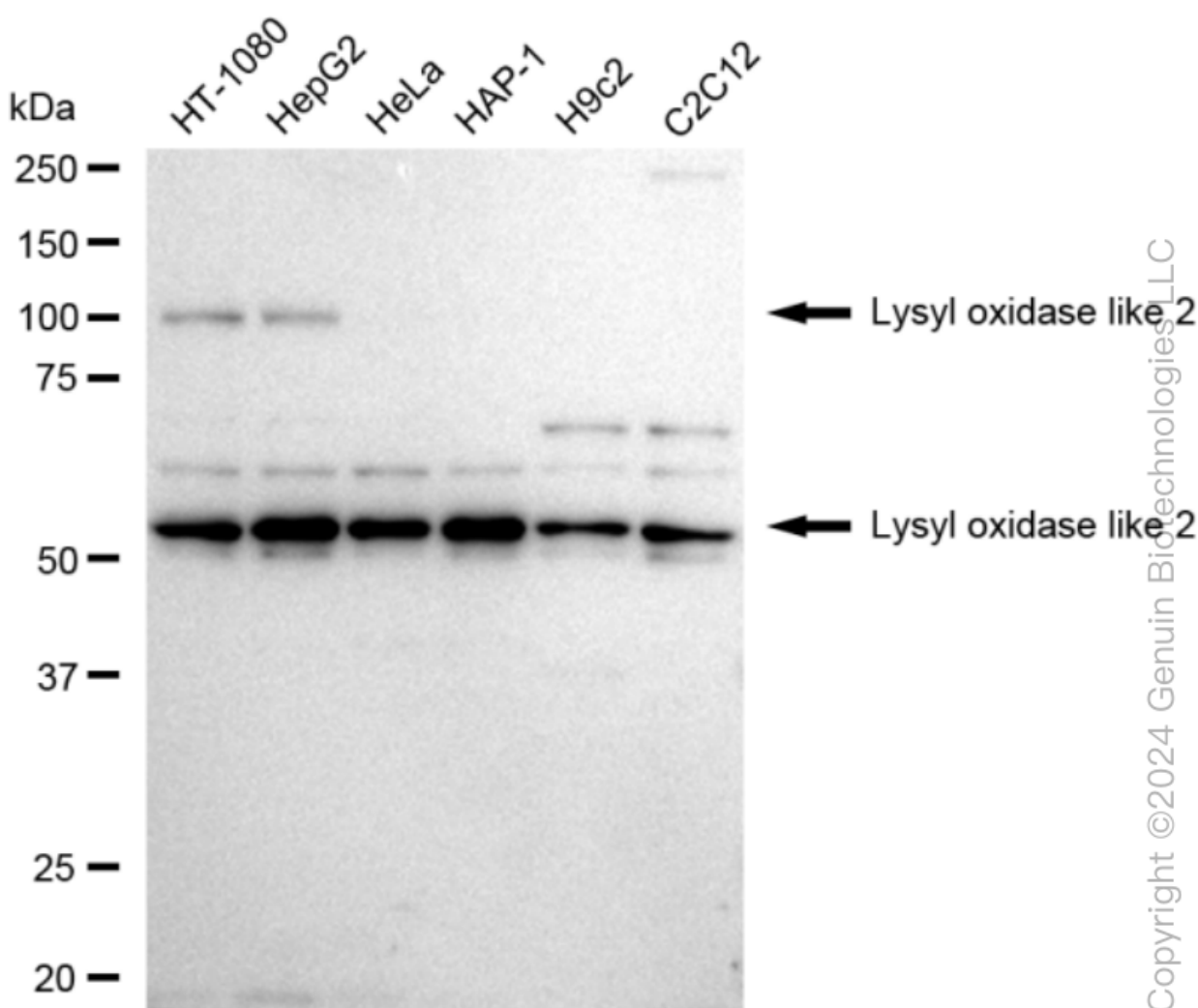
ORDERS

SALES@GENUINBIOTECH.COM
FAX: +1-540-855-7041

WWW.GENUINBIOTECH.COM



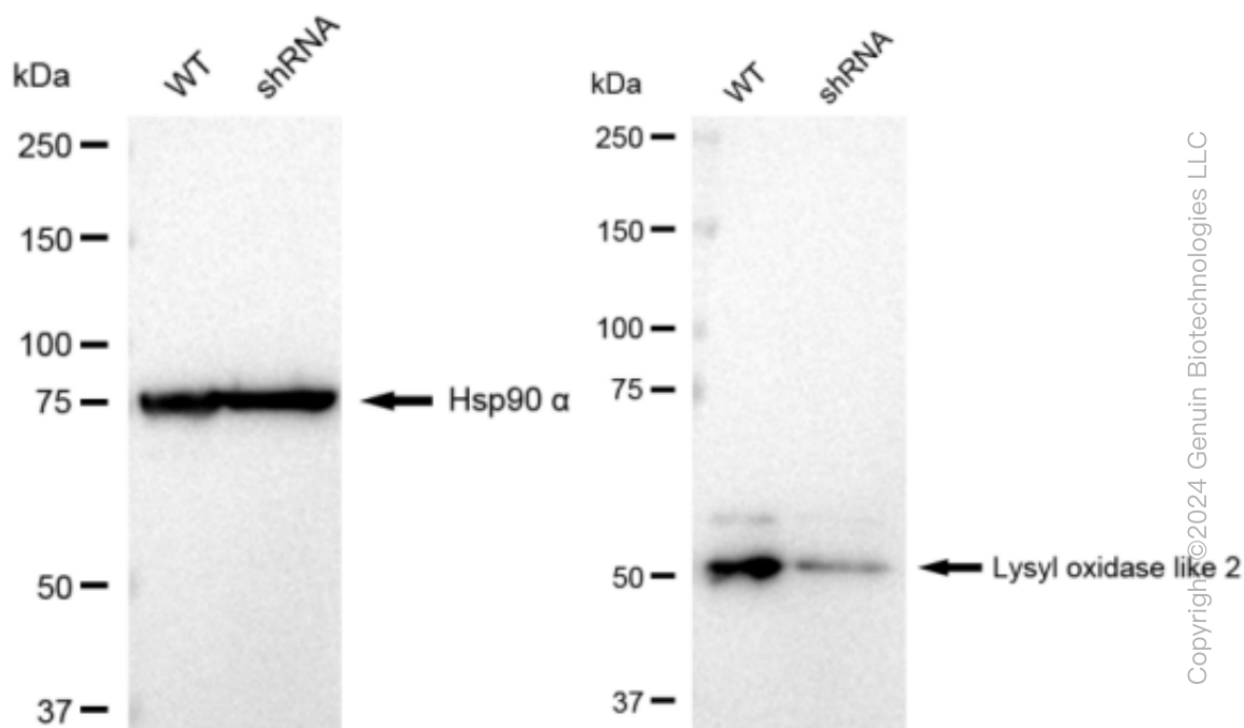
Immunocytochemical staining of HepG2 cells with Lysyl oxidase like 2 antibody (Cat#61481, 1:1,000). Nuclei were stained blue with DAPI; Lysyl oxidase like 2 was stained magenta with Alexa Fluor® 647. Images were taken using Leica stellaris 5. Protein abundance based on laser Intensity and smart gain: Medium. Scale bar: 20 μ m.



KD-Validated Anti-Lysyl oxidase like 2 Recombinant Rabbit Monoclonal Antibody

PAGE 4

Western blotting analysis using anti-Lysyl oxidase like 2 antibody (Cat#61481). Total cell lysates (30 µg) from various cell lines were loaded and separated by SDS-PAGE. The blot was incubated with anti-Lysyl oxidase like 2 antibody (Cat#61481, 1:5,000) and HRP-conjugated goat anti-rabbit secondary antibody (Cat#201, 1:20,000) respectively. Image was developed using FeQ™ ECL Substrate Kit (Cat#226).



Western blotting analysis using anti-Lysyl oxidase like 2 antibody (Cat#61481). Lysyl oxidase like 2 expression in wild type (WT) and lysyl oxidase like 2 shRNA knockdown (KD) HeLa cells with 30 µg of total cell lysates. Hsp90 α serves as a loading control. The blot was incubated with anti-Lysyl oxidase like 2 antibody (Cat#61481, 1:5,000) and HRP-conjugated goat anti-rabbit secondary antibody (Cat#201, 1:20,000) respectively. Image was developed using FeQ™ ECL Substrate Kit (Cat#226).

SUPPORT

SUPPORT@GENUINBIOTECH.COM
TEL: +1-540-855-7041

ORDERS

SALES@GENUINBIOTECH.COM
FAX: +1-540-855-7041

WWW.GENUINBIOTECH.COM