

KD-Validated Anti-LDL receptor related protein 8 Recombinant Rabbit Monoclonal Antibody



Catalog #: 61482

Aliases

LRP8; LDL Receptor Related Protein 8; APOER2; LRP-8; HSZ75190; MCI1; Low Density Lipoprotein Receptor-Related Protein 8, Apolipoprotein E Receptor; Low-Density Lipoprotein Receptor-Related Protein 8; Apolipoprotein E Receptor 2; ApoE Receptor 2

Background

Gene Name: LRP8

NCBI Gene Entry: [7804](#)

UniProt Entry: [Q14114](#)

Application Information

Molecular Weight: Predicted, 106 kDa, observed, 106 kDa

Clonality: Rabbit monoclonal antibody

Clone ID: 23GB2520

Species Reactivity: Human, mouse, rat

Applications Tested: Western blotting (WB), flow cytometry (FCM), immunocytochemistry (IC)

Immunogen

A synthesized peptide derived from human ApoER2

Isotype

Rabbit IgG

Storage Buffer

Supplied in PBS (pH 7.4) containing 50% glycerol, and 0.02% sodium azide.

Storage

Store at -20 °C for one year.

Recommended Dilutions

Western Blotting (WB): 1:1,000-1:5,000

Flow Cytometry (FCM): 1:2,000

Immunocytochemistry (IC): 1:100-1:1,000

Note: This product is for research use only.

SUPPORT

SUPPORT@GENUINBIOTECH.COM
TEL: +1-540-855-7041

ORDERS

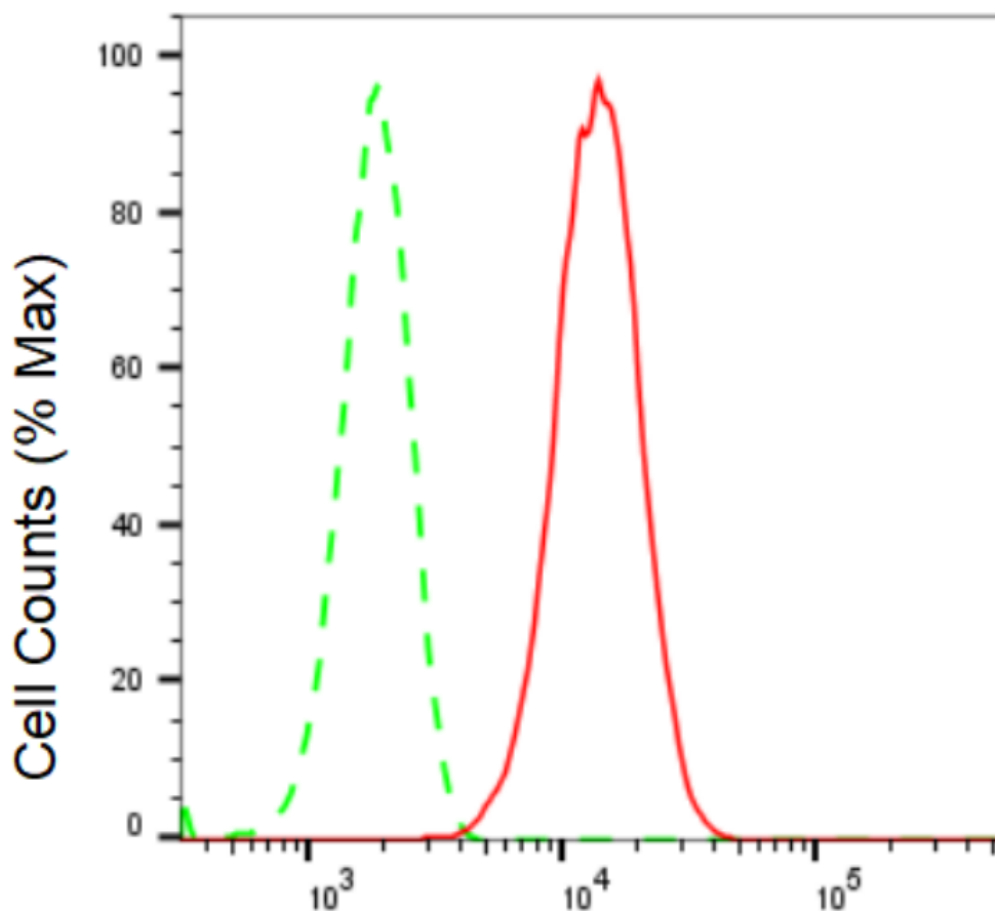
SALES@GENUINBIOTECH.COM
FAX: +1-540-855-7041

WWW.GENUINBIOTECH.COM

KD-Validated Anti-LDL receptor related protein 8 Recombinant Rabbit Monoclonal Antibody

PAGE 2

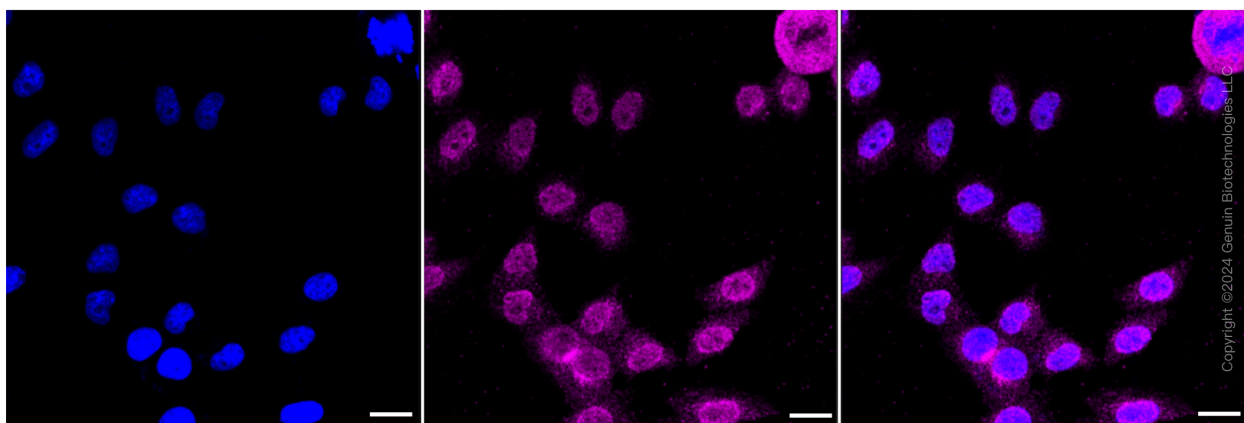
Validation Data



Copyright ©2024 Genuin Biotechnologies LLC

LDL receptor related protein 8-Alexa Fluor® 647

Flow cytometric analysis of LDL receptor related protein 8 expression in HepG2 cells using LDL receptor related protein 8 antibody (Cat#61482, 1:2,000). Green, isotype control; red, LDL receptor related protein 8.



Copyright ©2024 Genuin Biotechnologies LLC

SUPPORT

SUPPORT@GENUINBIOTECH.COM
TEL: +1-540-855-7041

ORDERS

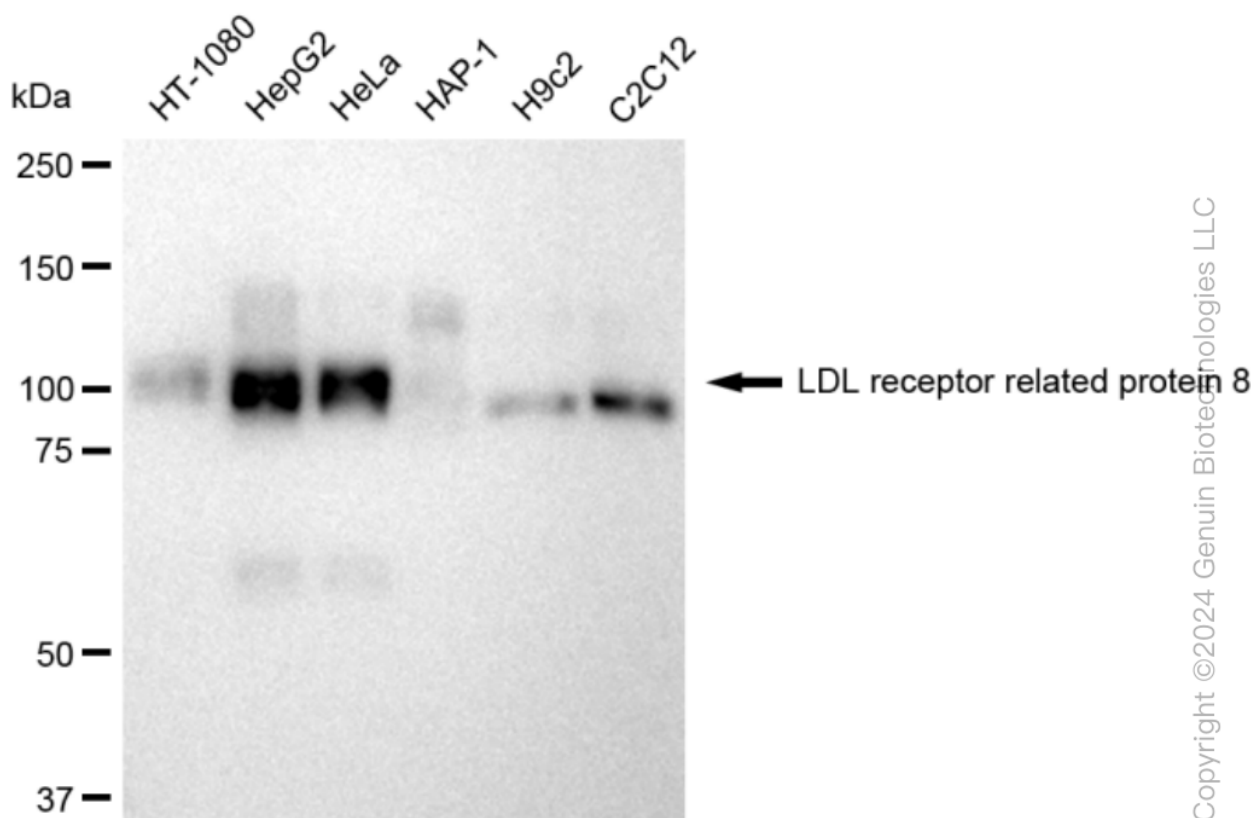
SALES@GENUINBIOTECH.COM
FAX: +1-540-855-7041

WWW.GENUINBIOTECH.COM

KD-Validated Anti-LDL receptor related protein 8 Recombinant Rabbit Monoclonal Antibody

PAGE 3

Immunocytochemical staining of HepG2 cells with LDL receptor related protein 8 antibody (Cat#61482, 1:1,000). Nuclei were stained blue with DAPI; LDL receptor related protein 8 was stained magenta with Alexa Fluor® 647. Images were taken using Leica stellaris 5. Protein abundance based on laser Intensity and smart gain: Medium. Scale bar: 20 μ m.



Western blotting analysis using anti-LDL receptor related protein 8 antibody (Cat#61482). Total cell lysates (30 μ g) from various cell lines were loaded and separated by SDS-PAGE. The blot was incubated with anti-LDL receptor related protein 8 antibody (Cat#61482, 1:5,000) and HRP-conjugated goat anti-rabbit secondary antibody (Cat#201, 1:20,000) respectively. Image was developed using FeQ™ ECL Substrate Kit (Cat#226).

SUPPORT

SUPPORT@GENUINBIOTECH.COM
TEL: +1-540-855-7041

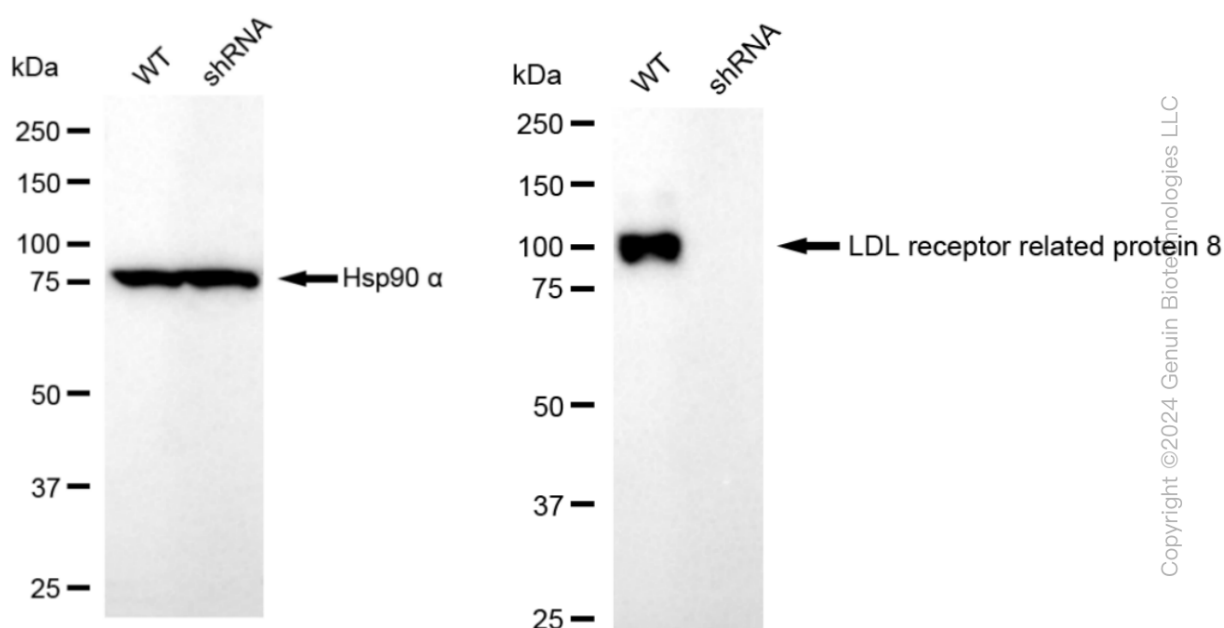
ORDERS

SALES@GENUINBIOTECH.COM
FAX: +1-540-855-7041

WWW.GENUINBIOTECH.COM

KD-Validated Anti-LDL receptor related protein 8 Recombinant Rabbit Monoclonal Antibody

PAGE 4



Western blotting analysis using anti-LDL receptor related protein 8 antibody (Cat#61482). LDL receptor related protein 8 expression in wild type (WT) and LDL receptor related protein 8 shRNA knockdown (KD) HeLa cells with 30 µg of total cell lysates. β-Tubulin serves as a loading control. The blot was incubated with anti-LDL receptor related protein 8 antibody (Cat#61482, 1:5,000) and HRP-conjugated goat anti-rabbit secondary antibody (Cat#201, 1:20,000) respectively. Image was developed using FeQ™ ECL Substrate Kit (Cat#226).

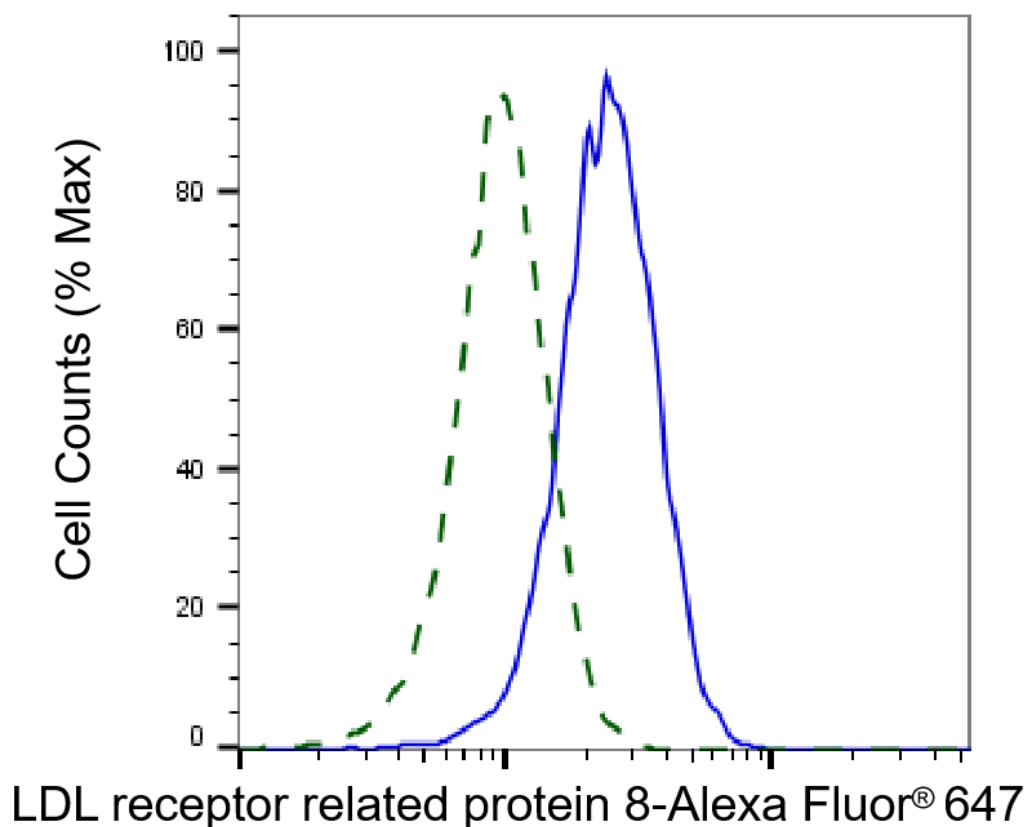
SUPPORT

SUPPORT@GENUINBIOTECH.COM
TEL: +1-540-855-7041

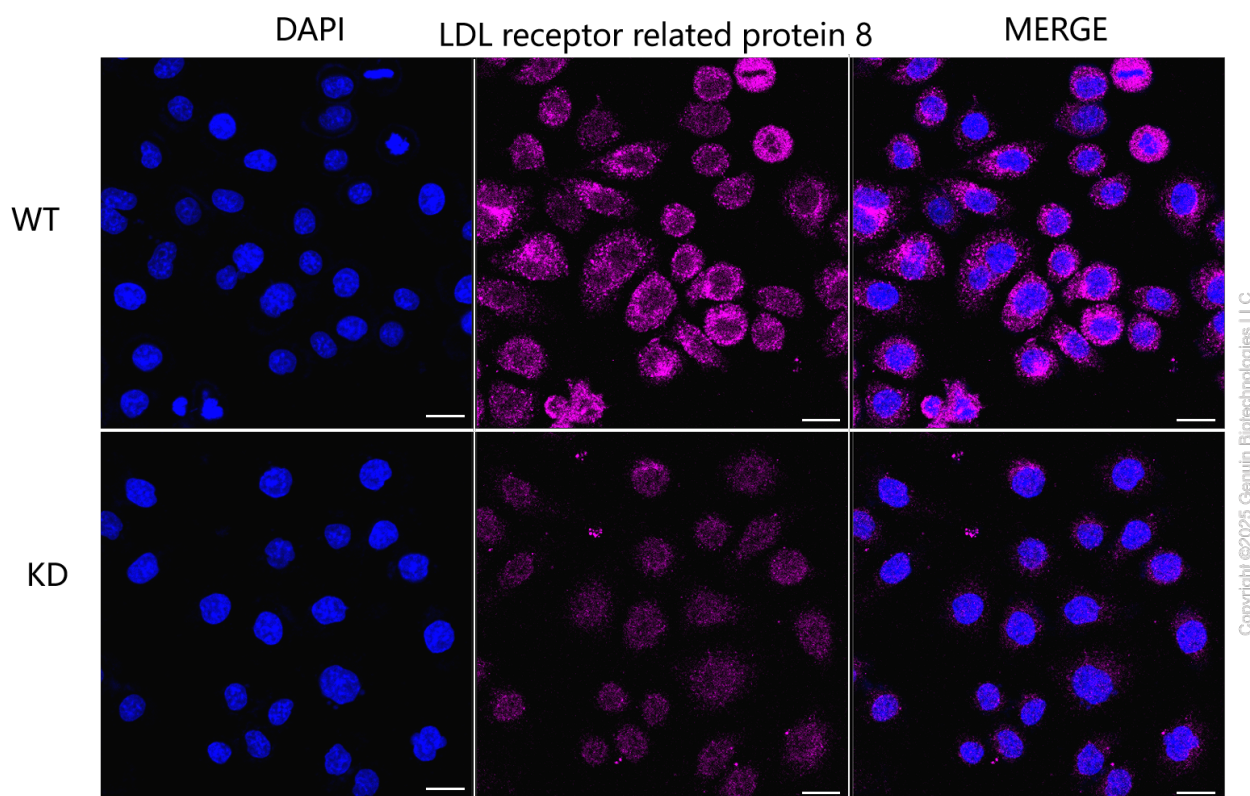
ORDERS

SALES@GENUINBIOTECH.COM
FAX: +1-540-855-7041

WWW.GENUINBIOTECH.COM



Validation of LDL receptor related protein 8 knockdown using flow cytometry. Wild-type(WT, Blue) and knockdown(KD, Green) HeLa cells were stained with anti-LDL receptor related protein 8 antibody (Cat#61482, 1:2,000) and analyzed using BD flow cytometer.



Immunocytochemical staining of HeLa cells using anti-LDL receptor related protein 8 antibody (Cat#61482, 1:1,000), Top panel: wild-type (WT); Bottom panel: LDL receptor related protein 8 shRNA knockdown (KD). Nuclei were stained blue with DAPI; LDL receptor related protein 8 was stained magenta with Alexa Fluor® 647. Scale bar, 20 μ m. Permeabilization: Triton.