

KD-Validated Anti-MAPK activated protein kinase 2 Recombinant Rabbit Monoclonal



Catalog #: 61486

Aliases

MAPKAPK2; MAPK Activated Protein Kinase 2; MK2; Mitogen-Activated Protein Kinase-Activated Protein Kinase 2; MAP Kinase-Activated Protein Kinase 2; MAPKAP Kinase 2; EC 2.7.11.1; MAPKAP-K2; MK-2; MAPK-Activated Protein Kinase 2; MAPKAPK-2; EC 2.7.11

Background

Gene Name: MAPKAPK2

NCBI Gene Entry: [9261](#)

UniProt Entry: [P49137](#)

Application Information

Molecular Weight: Predicted, 46 kDa, observed, 46 kDa

Clonality: Rabbit monoclonal antibody

Clone ID: 23GB2820

Species Reactivity: Human

Applications Tested: Western blotting (WB), flow cytometry (FCM), immunocytochemistry (IC)

Immunogen

A synthesized peptide derived from human MAPKAP Kinase 2

Isotype

Rabbit IgG

Storage Buffer

Supplied in PBS (pH 7.4) containing 50% glycerol, and 0.02% sodium azide.

Storage

Store at -20 °C for one year.

Recommended Dilutions

Western Blotting (WB): 1:1,000-1:5,000

Flow Cytometry (FCM): 1:2,000

Immunocytochemistry (IC): 1:100-1:1,000

Note: This product is for research use only.

SUPPORT

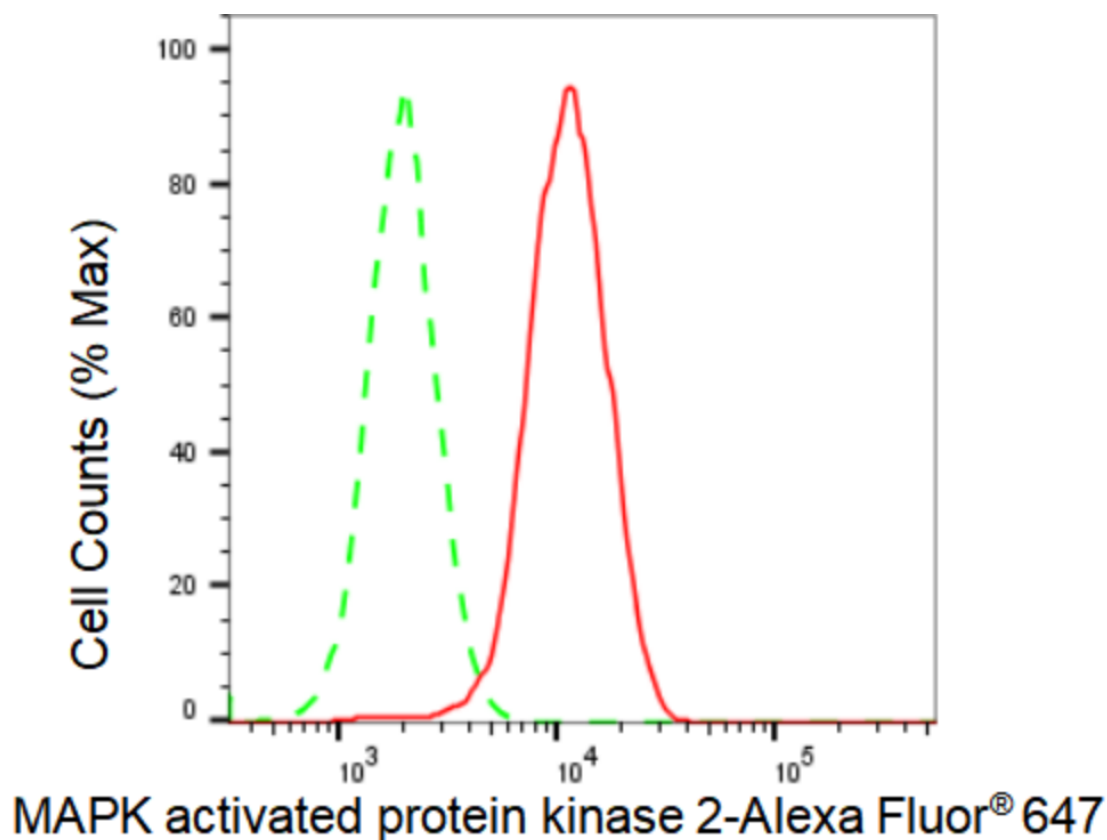
SUPPORT@GENUINBIOTECH.COM
TEL: +1-540-855-7041

ORDERS

SALES@GENUINBIOTECH.COM
FAX: +1-540-855-7041

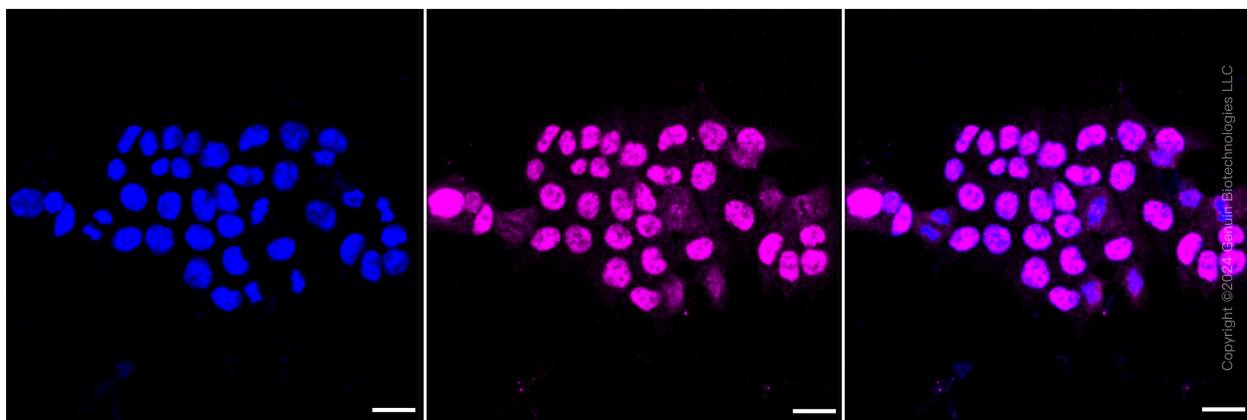
WWW.GENUINBIOTECH.COM

Validation Data



Copyright ©2024 Genuin Biotechnologies LLC

Flow cytometric analysis of MAPK activated protein kinase 2 expression in HAP-1 cells using MAPK activated protein kinase 2 antibody (Cat#61486, 1:2,000). Green, isotype control; red, MAPK activated protein kinase 2.



Immunocytochemical staining of HAP-1 cells with MAPK activated protein kinase 2 antibody (Cat#61486, 1:1,000). Nuclei were stained blue with DAPI; MAPK activated protein kinase 2 was stained magenta with Alexa Fluor® 647. Images were taken using Leica stellaris 5. Protein abundance based on laser Intensity and smart gain: Medium. Scale bar: 20 μ m.

SUPPORT

SUPPORT@GENUINBIOTECH.COM
TEL: +1-540-855-7041

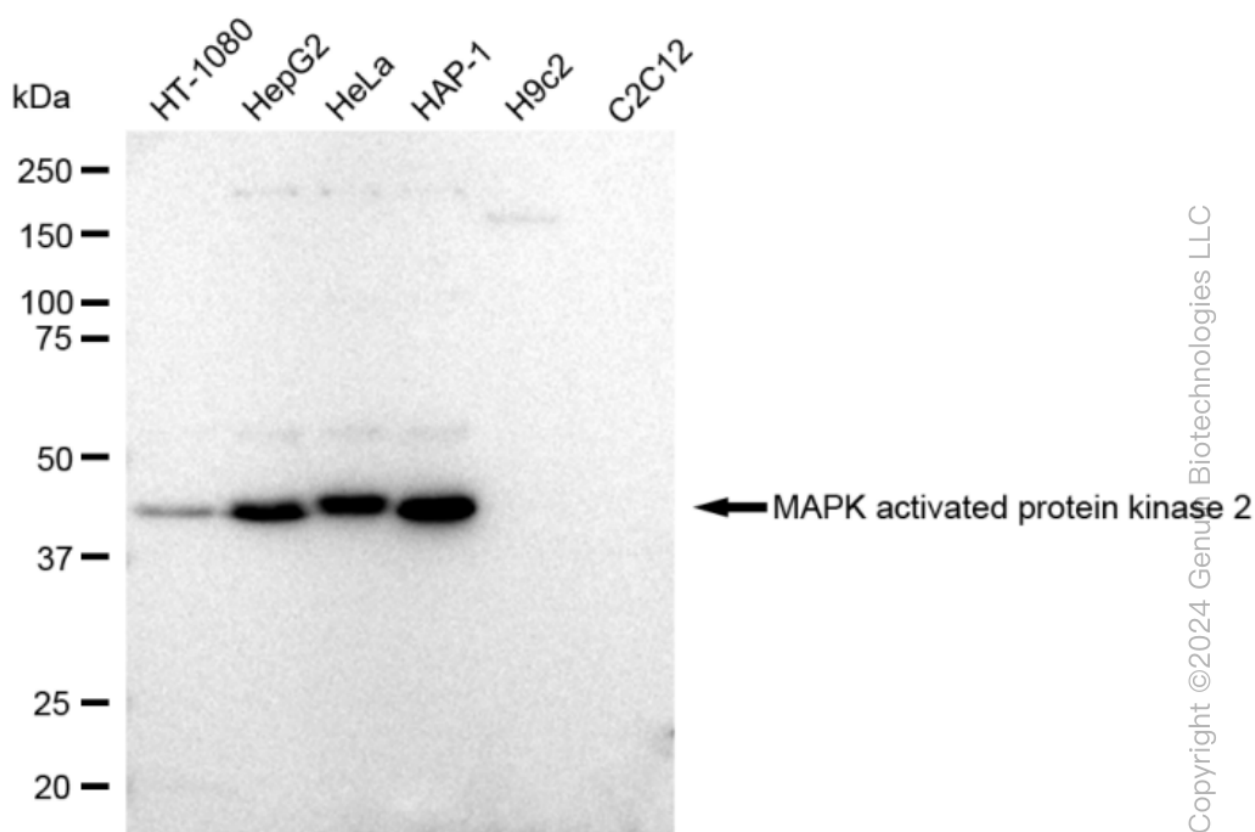
ORDERS

SALES@GENUINBIOTECH.COM
FAX: +1-540-855-7041

WWW.GENUINBIOTECH.COM

KD-Validated Anti-MAPK activated protein kinase 2 Recombinant Rabbit Monoclonal

PAGE 3



Western blotting analysis using anti-MAPK activated protein kinase 2 antibody (Cat#61486). Total cell lysates (30 μ g) from various cell lines were loaded and separated by SDS-PAGE. The blot was incubated with anti-MAPK activated protein kinase 2 antibody (Cat#61486, 1:5,000) and HRP-conjugated goat anti-rabbit secondary antibody (Cat#201, 1:20,000) respectively. Image was developed using FeQ™ ECL Substrate Kit (Cat#226).

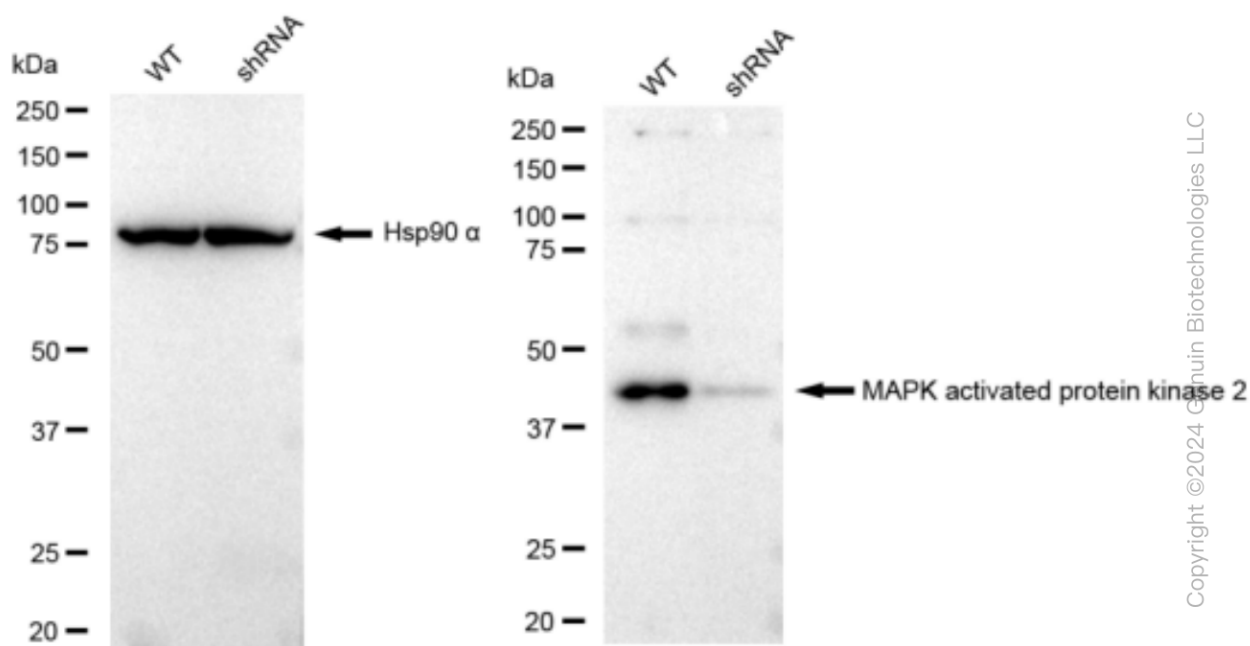
SUPPORT

SUPPORT@GENUINBIOTECH.COM
TEL: +1-540-855-7041

ORDERS

SALES@GENUINBIOTECH.COM
FAX: +1-540-855-7041

WWW.GENUINBIOTECH.COM



Western blotting analysis using anti-MAPK activated protein kinase 2 antibody (Cat#61486). MAPK activated protein kinase 2 expression in wild type (WT) and MAPK activated protein kinase 2 shRNA knockdown (KD) HeLa cells with 30 µg of total cell lysates. Hsp90 α serves as a loading control. The blot was incubated with anti-MAPK activated protein kinase 2 antibody (Cat#61486, 1:5,000) and HRP-conjugated goat anti-rabbit secondary antibody (Cat#201, 1:20,000) respectively. Image was developed using FeQ™ ECL Substrate Kit (Cat#226).