

KD-Validated Anti-CD146 Recombinant Rabbit Monoclonal Antibody



Catalog #: 61487

Aliases

MCAM; Melanoma Cell Adhesion Molecule; MUC18; METCAM; HEMCAM; CD146; S-Endo 1 Endothelial-Associated Antigen; Melanoma-Associated Antigen MUC18; Cell Surface Glycoprotein MUC18; Cell Surface Glycoprotein P1H12; Melanoma-Associated Antigen A32; Gicerin; MelCAM; Melanoma Adhesion Molecule; CD146 Antigen; MELCAM

Background

Gene Name: MCAM

NCBI Gene Entry: [4162](#)

UniProt Entry: [P43121](#)

Application Information

Molecular Weight: Predicted, 72 kDa, observed, 100 kDa

Clonality: Rabbit monoclonal antibody

Clone ID: 23GB2705

Species Reactivity: Human, rat

Applications Tested: Western blotting (WB), flow cytometry (FCM), immunocytochemistry (IC)

Immunogen

A synthesized peptide derived from human CD146

Isotype

Rabbit IgG

Storage Buffer

Supplied in PBS (pH 7.4) containing 50% glycerol, and 0.02% sodium azide.

Storage

Store at -20 °C for one year.

Recommended Dilutions

Western Blotting (WB): 1:1,000-1:5,000

Flow Cytometry (FCM): 1:2,000

Immunocytochemistry (IC): 1:100-1:1,000

SUPPORT

SUPPORT@GENUINBIOTECH.COM
TEL: +1-540-855-7041

ORDERS

SALES@GENUINBIOTECH.COM
FAX: +1-540-855-7041

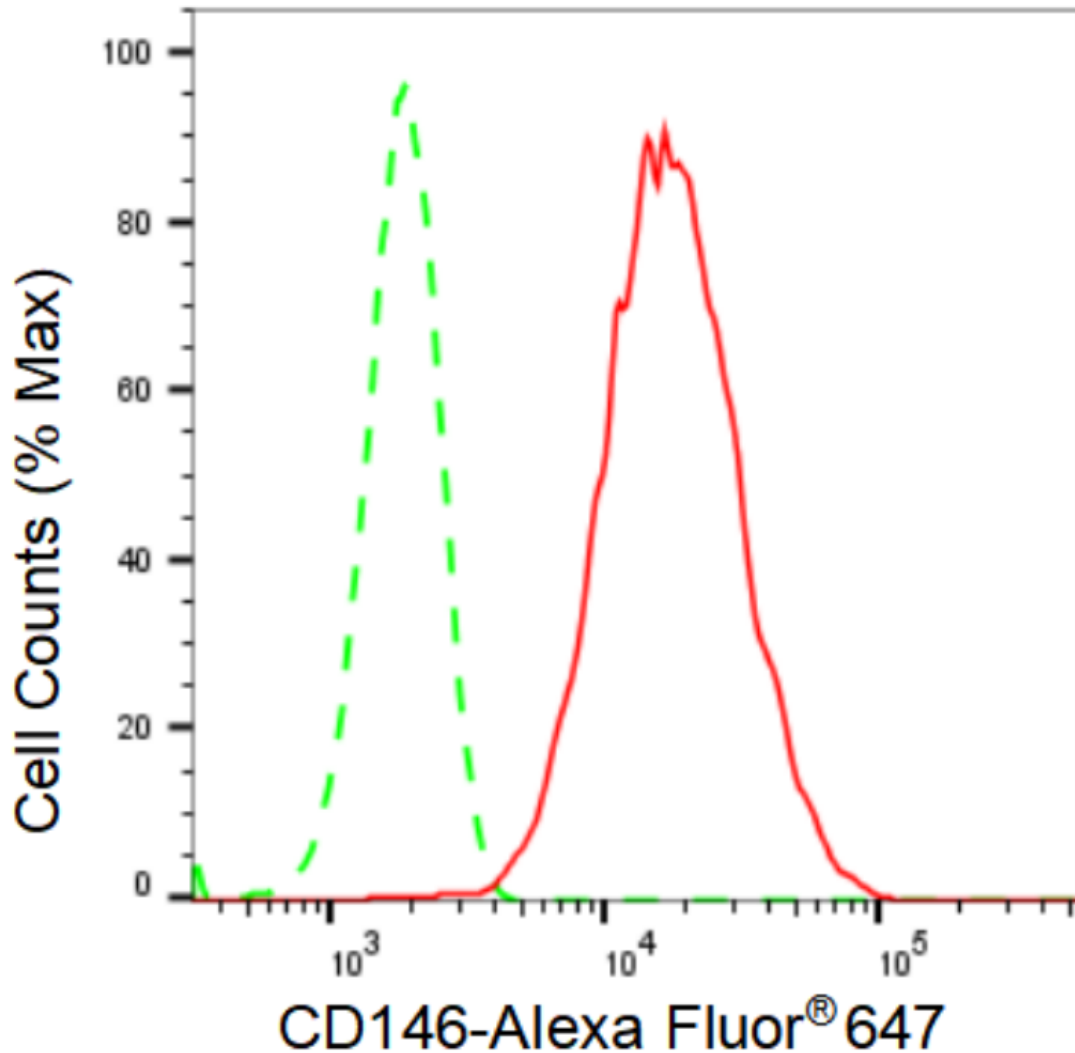
WWW.GENUINBIOTECH.COM

KD-Validated Anti-CD146 Recombinant Rabbit Monoclonal Antibody

PAGE 2

Note: This product is for research use only.

Validation Data



Copyright ©2024 Genuin Biotechnologies LLC

Flow cytometric analysis of CD146 expression in HepG2 cells using CD146 antibody (Cat#61487, 1:2,000). Green, isotype control; red, CD146.

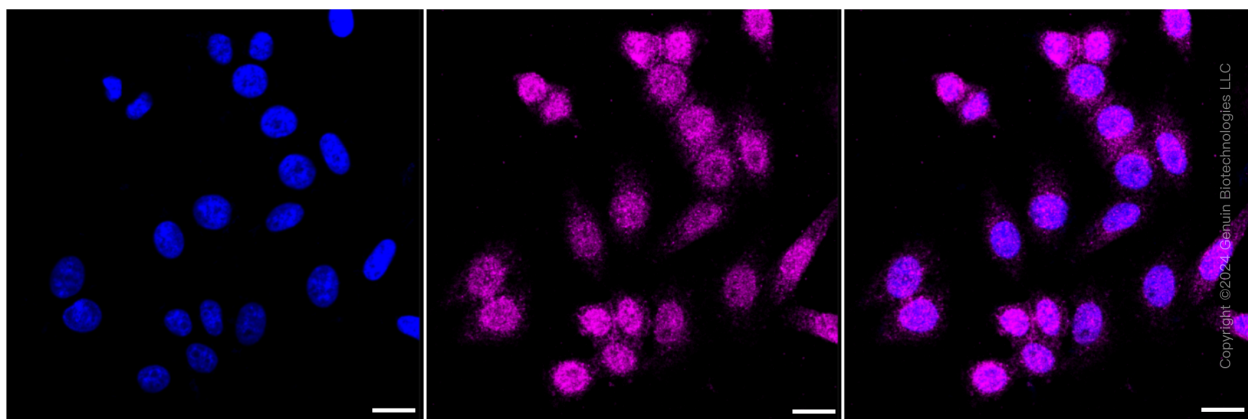
SUPPORT

SUPPORT@GENUINBIOTECH.COM
TEL: +1-540-855-7041

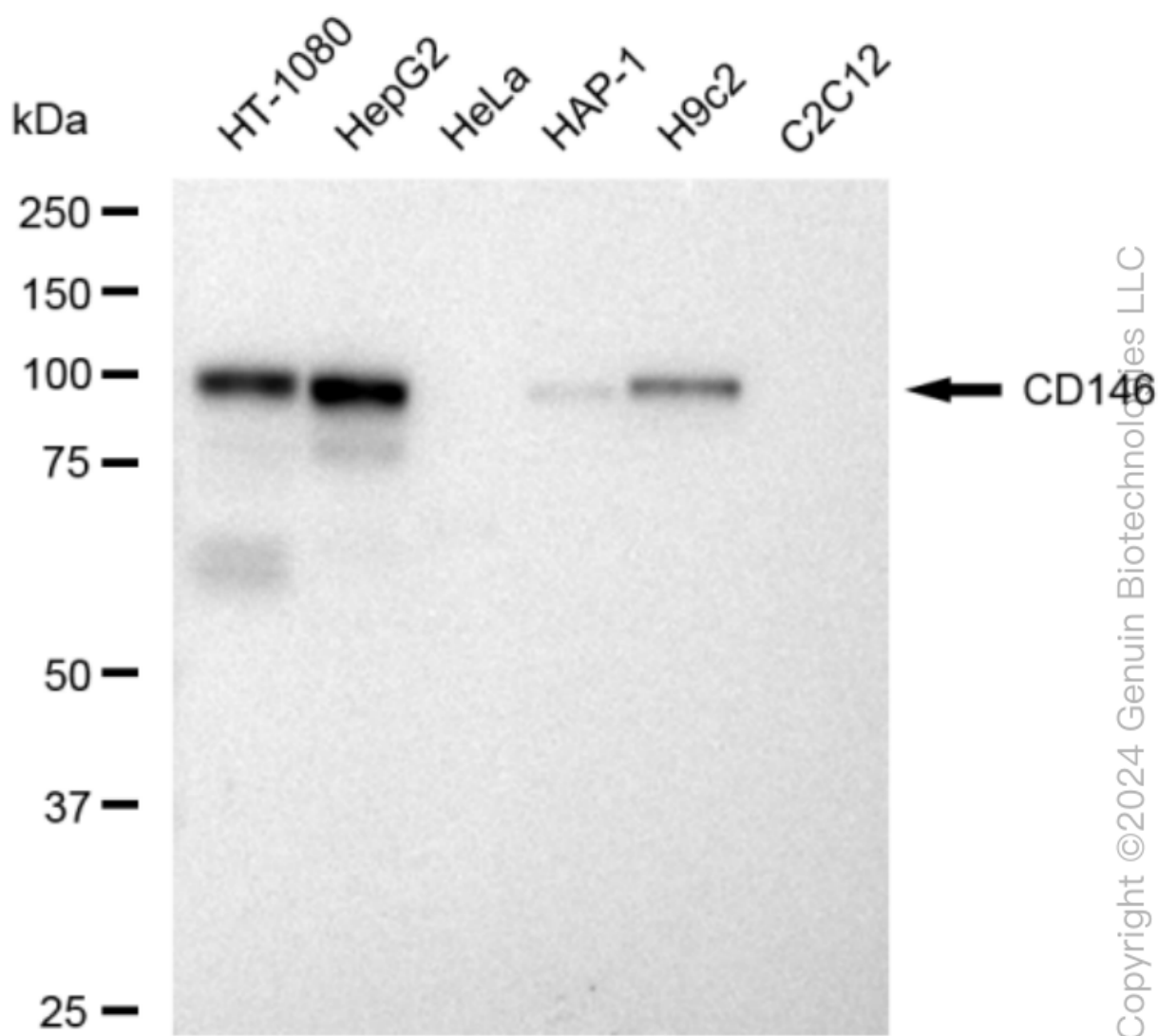
ORDERS

SALES@GENUINBIOTECH.COM
FAX: +1-540-855-7041

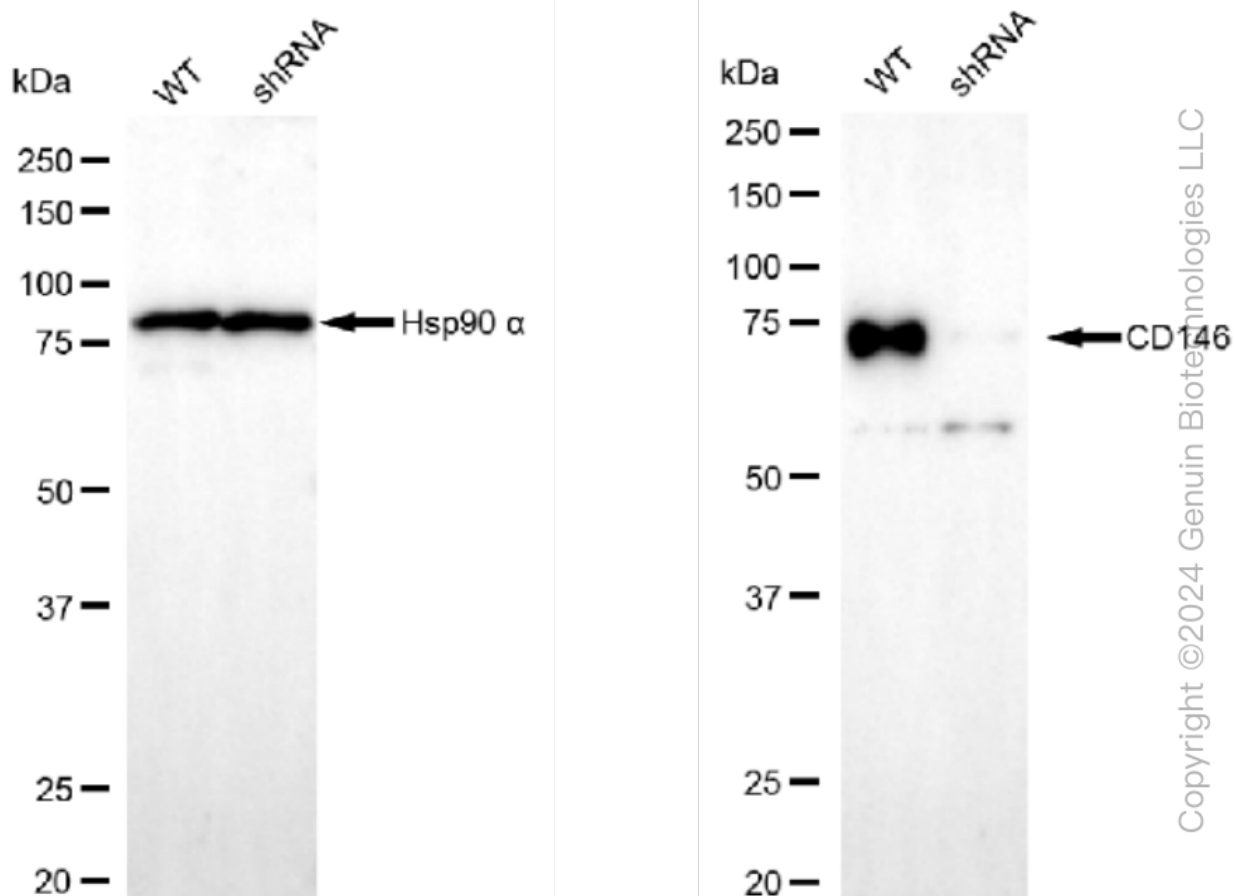
WWW.GENUINBIOTECH.COM



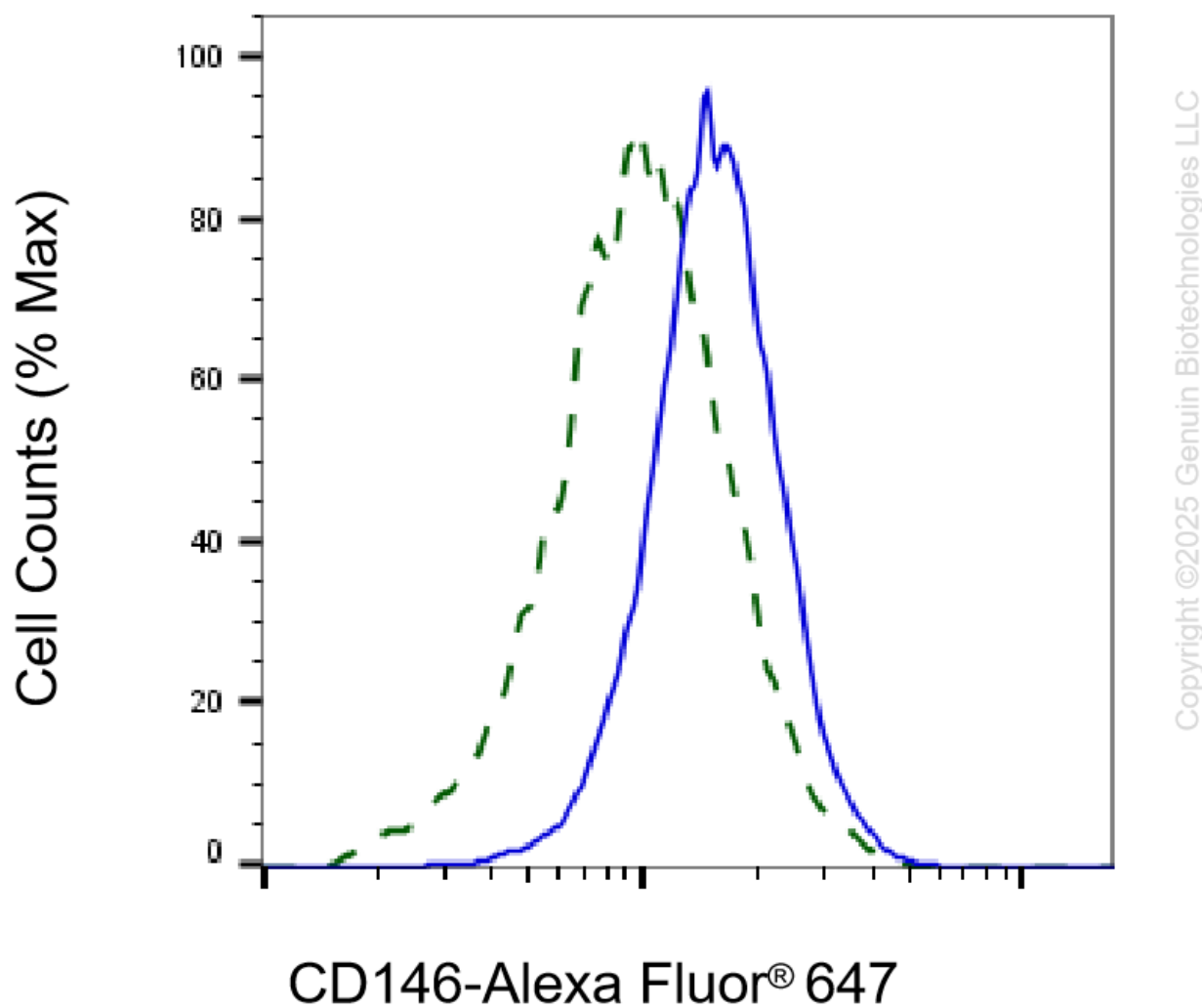
Immunocytochemical staining of HepG2 cells with CD146 antibody (Cat#61487, 1:1,000). Nuclei were stained blue with DAPI; CD146 was stained magenta with Alexa Fluor® 647. Images were taken using Leica stellaris 5. Protein abundance based on laser Intensity and smart gain: Medium. Scale bar: 20 μ m.



Western blotting analysis using anti-CD146 antibody (Cat#61487). Total cell lysates (30 µg) from various cell lines were loaded and separated by SDS-PAGE. The blot was incubated with anti-CD146 antibody (Cat#61487, 1:5,000) and HRP-conjugated goat anti-rabbit secondary antibody (Cat#201, 1:20,000) respectively. Image was developed using FeQ™ ECL Substrate Kit (Cat#226).



Western blotting analysis using anti-CD146 antibody (Cat#61487). CD146 expression in wild type (WT) and CD146 shRNA knockdown (KD) HeLa cells with 30 μ g of total cell lysates. β -Tubulin serves as a loading control. The blot was incubated with anti-CD146 antibody (Cat#61487, 1:5,000) and HRP-conjugated goat anti-rabbit secondary antibody (Cat#201, 1:20,000) respectively. Image was developed using FeQ™ ECL Substrate Kit (Cat#226).



Validation of CD146 knockdown using flow cytometry. Wild-type(WT, Blue) and knockdown(KD, Green) HeLa cells were stained with anti-CD146 antibody (Cat#61487, 1:2,000) and analyzed using BD flow cytometer.