

KD-Validated Anti-Methionyl aminopeptidase 2 Recombinant Rabbit Monoclonal Antibody



Catalog #: 61489

Aliases

METAP2; Methionyl Aminopeptidase 2; MNPEP; MAP2; P67; Initiation Factor 2-Associated 67 KDa Glycoprotein; Methionine Aminopeptidase 2; Peptidase M; P67eIF2; Testicular Tissue Protein Li 17; EIF-2-Associated P67 Homolog; Peptidase M 2; EC 3.4.11.18; P67EIF2; MetAP 2; MAP 2

Background

Gene Name: METAP2

NCBI Gene Entry: [10988](#)

UniProt Entry: [P50579](#)

Application Information

Molecular Weight: Predicted, 53 kDa, observed, 67 kDa

Clonality: Rabbit monoclonal antibody

Clone ID: 23GB2565

Species Reactivity: Human, mouse, rat

Applications Tested: Western blotting (WB), flow cytometry (FCM), immunocytochemistry (IC), Immunohistochemistry (IHC)

Immunogen

A synthesized peptide derived from human Methionine Aminopeptidase 2

Isotype

Rabbit IgG

Storage Buffer

Supplied in PBS (pH 7.4) containing 50% glycerol, and 0.02% sodium azide.

Storage

Store at -20 °C for one year.

Recommended Dilutions

Western Blotting (WB): 1:1,000-1:5,000

Flow Cytometry (FCM): 1:2,000

Immunocytochemistry (IC): 1:100-1:1,000

Immunohistochemistry (IHC): 1:100-1:200

SUPPORT

SUPPORT@GENUINBIOTECH.COM
TEL: +1-540-855-7041

ORDERS

SALES@GENUINBIOTECH.COM
FAX: +1-540-855-7041

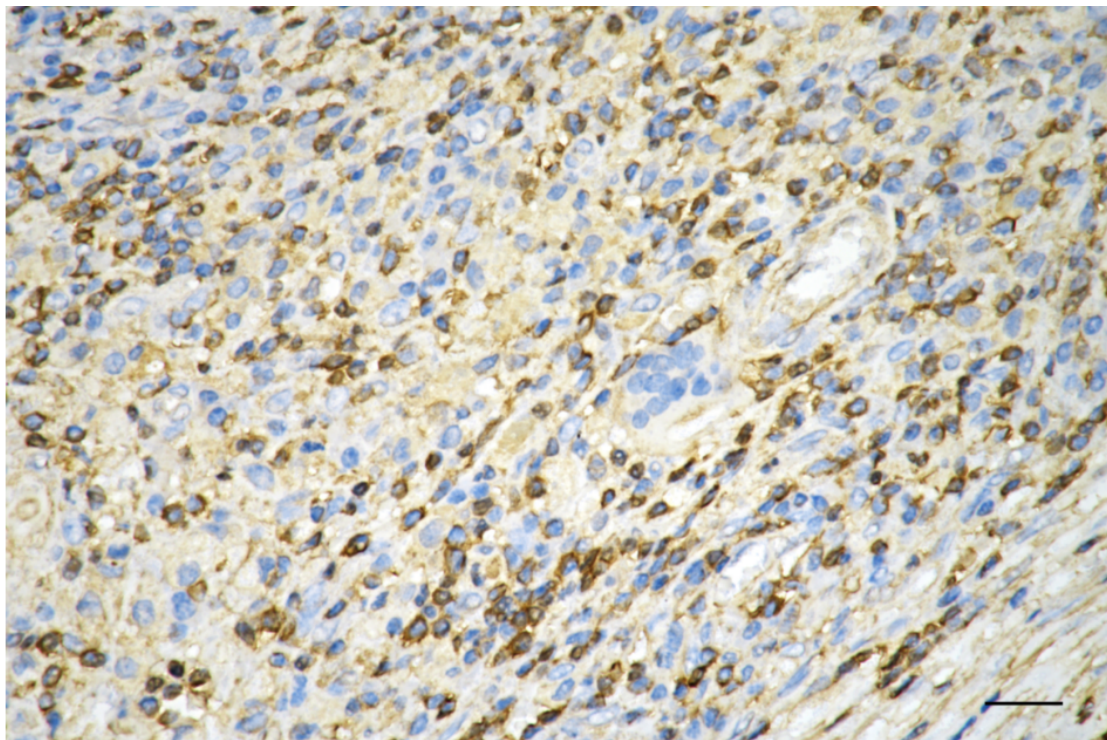
WWW.GENUINBIOTECH.COM

KD-Validated Anti-Methionyl aminopeptidase 2 Recombinant Rabbit Monoclonal Antibody

PAGE 2

Note: This product is for research use only.

Validation Data



Copyright ©2025 Genuin Biotechnologies LLC

Immunohistochemistry was performed on paraffin-embedded human sigmoid colon carcinoma using anti-methionyl aminopeptidase 2 antibody (Cat#61489, 1:200). Antigen retrieval was done in sodium citrate buffer (pH 6.0). DAB was used for detection, with hematoxylin counterstaining. Images were acquired using a Nikon Ci-L Plus microscope (40× objective). Scale bar: 25 μ m.

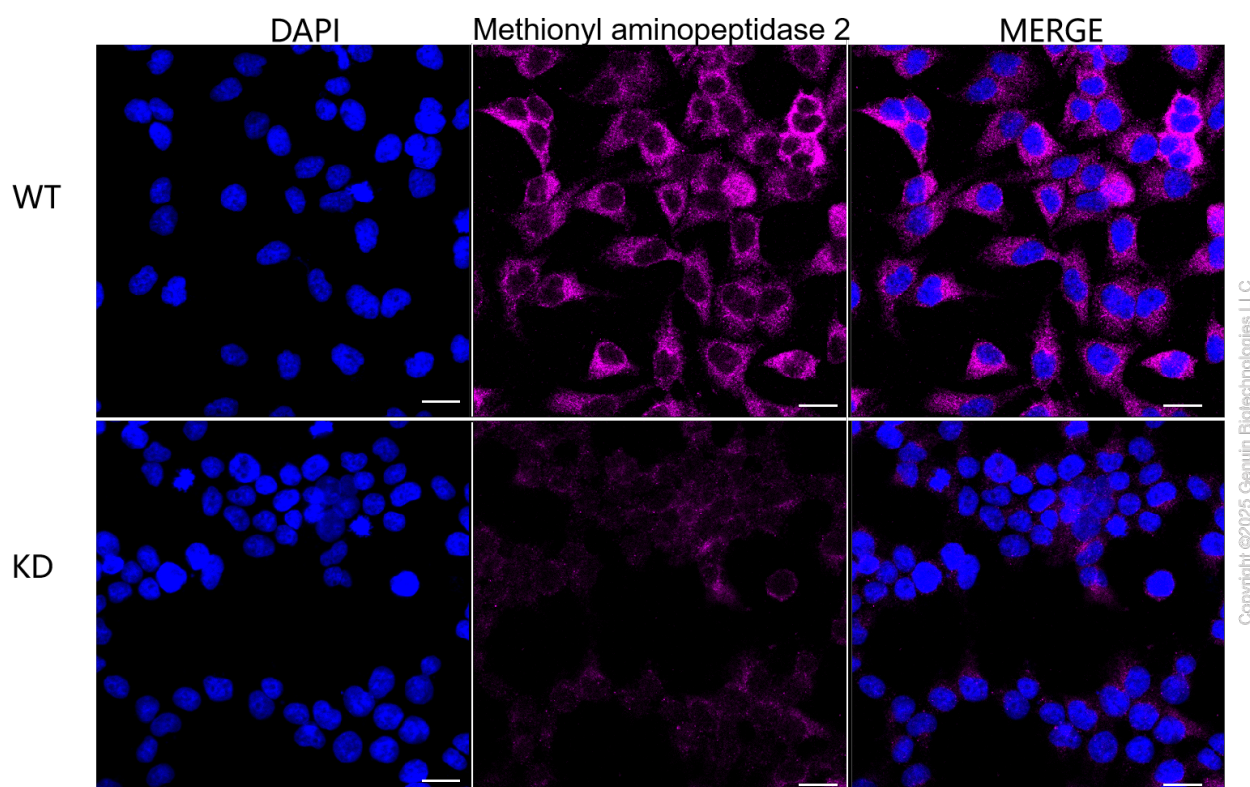
SUPPORT

SUPPORT@GENUINBIOTECH.COM
TEL: +1-540-855-7041

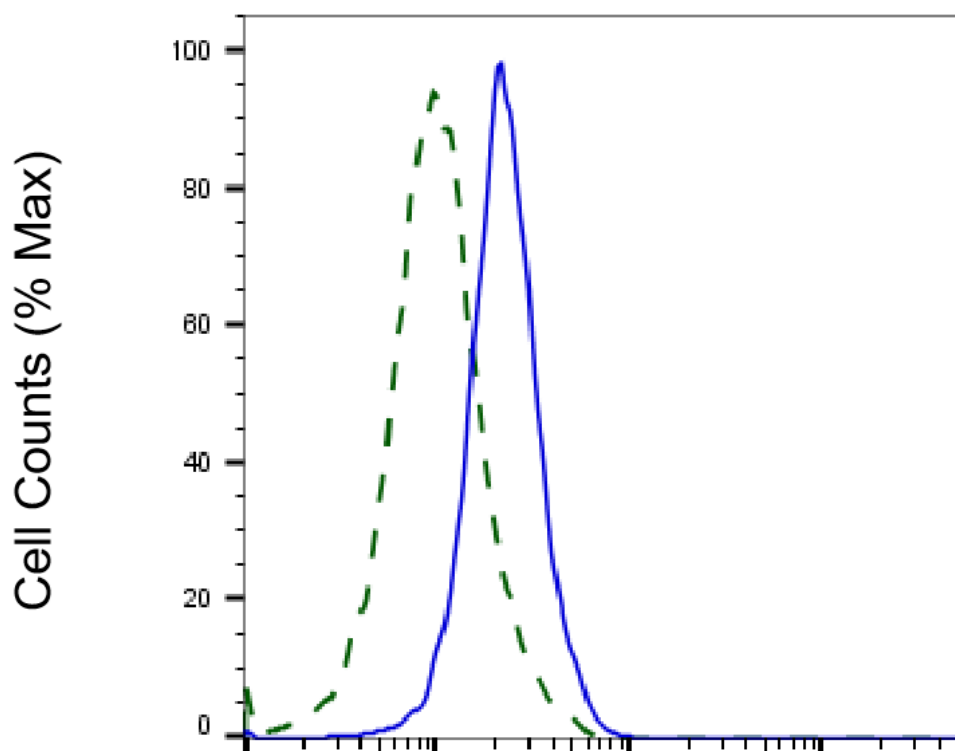
ORDERS

SALES@GENUINBIOTECH.COM
FAX: +1-540-855-7041

WWW.GENUINBIOTECH.COM



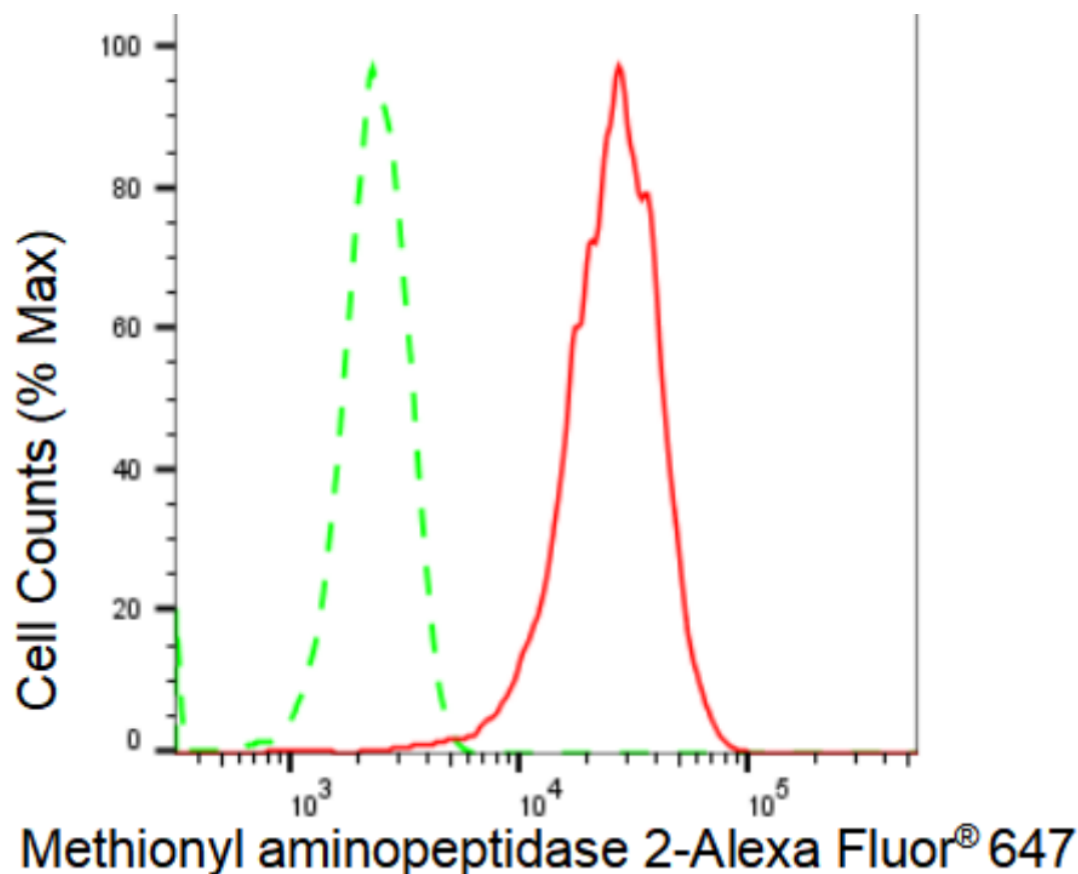
Immunocytochemical staining of HeLa cells using anti-Methionyl aminopeptidase 2 antibody (Cat#61489, 1:1,000), Top panel: wild-type (WT); Bottom panel: Methionyl aminopeptidase 2 shRNA knockdown (KD). Nuclei were stained blue with DAPI; Methionyl aminopeptidase 2 was stained magenta with Alexa Fluor® 647. Scale bar, 20 μ m. Permeabilization: Triton.



Copyright ©2025 Genuin Biotechnologies LLC

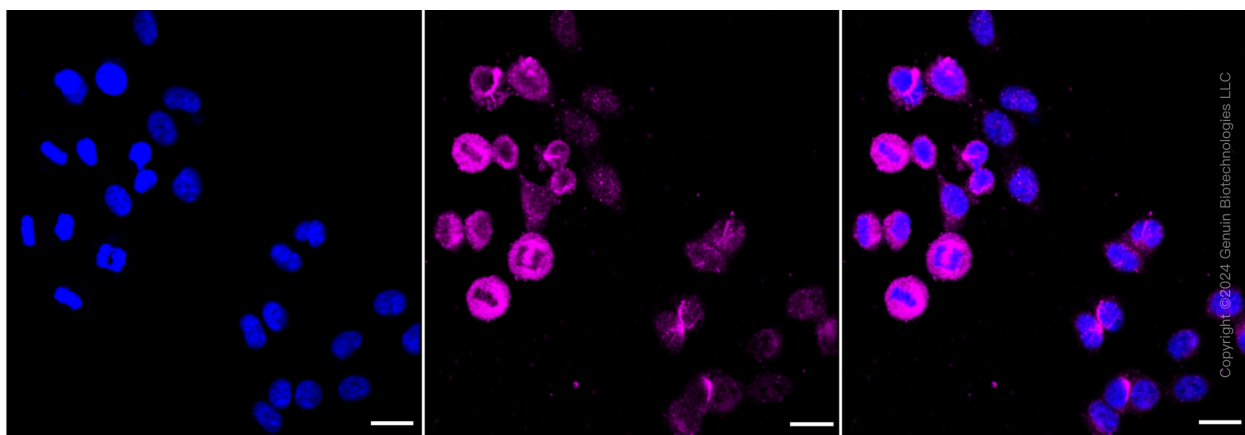
Methionyl aminopeptidase 2-Alexa Fluor® 647

Validation of Methionyl aminopeptidase 2 knockdown using flow cytometry. Wild-type(WT, Blue) and knockdown(KD, Green) HeLa cells were stained with anti-Methionyl aminopeptidase 2 antibody (Cat#61489, 1:2,000) and analyzed using CytoFLEX.



Copyright ©2024 Genuin Biotechnologies LLC

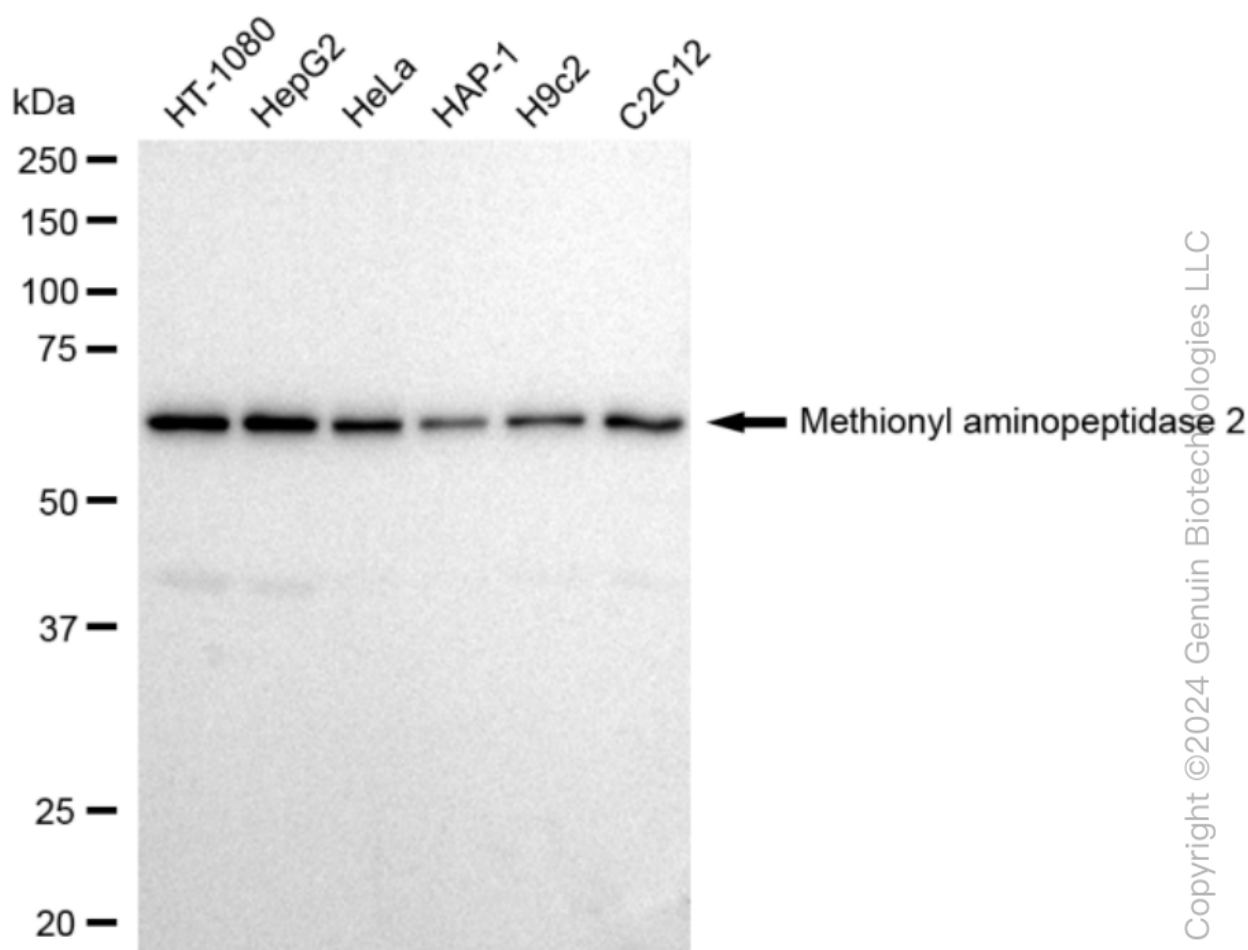
Flow cytometric analysis of Methionyl aminopeptidase 2 expression in HepG2 cells using Methionyl aminopeptidase 2 antibody (Cat#61489, 1:2,000). Green, isotype control; red, Methionyl aminopeptidase 2.



Immunocytochemical staining of HepG2 cells with Methionyl aminopeptidase 2 antibody (Cat#61489, 1:1,000). Nuclei were stained blue with DAPI; Methionyl aminopeptidase 2 was stained magenta with Alexa Fluor® 647. Images were taken using Leica stellaris 5. Protein abundance based on laser Intensity and smart gain: High. Scale bar: 20 μ m.

KD-Validated Anti-Methionyl aminopeptidase 2 Recombinant Rabbit Monoclonal Antibody

PAGE 6



Western blotting analysis using anti-Methionyl aminopeptidase 2 antibody (Cat#61489). Total cell lysates (30 µg) from various cell lines were loaded and separated by SDS-PAGE. The blot was incubated with anti-Methionyl aminopeptidase 2 antibody (Cat#61489, 1:5,000) and HRP-conjugated goat anti-rabbit secondary antibody (Cat#201, 1:20,000) respectively. Image was developed using FeQ™ ECL Substrate Kit (Cat#226).

SUPPORT

SUPPORT@GENUINBIOTECH.COM
TEL: +1-540-855-7041

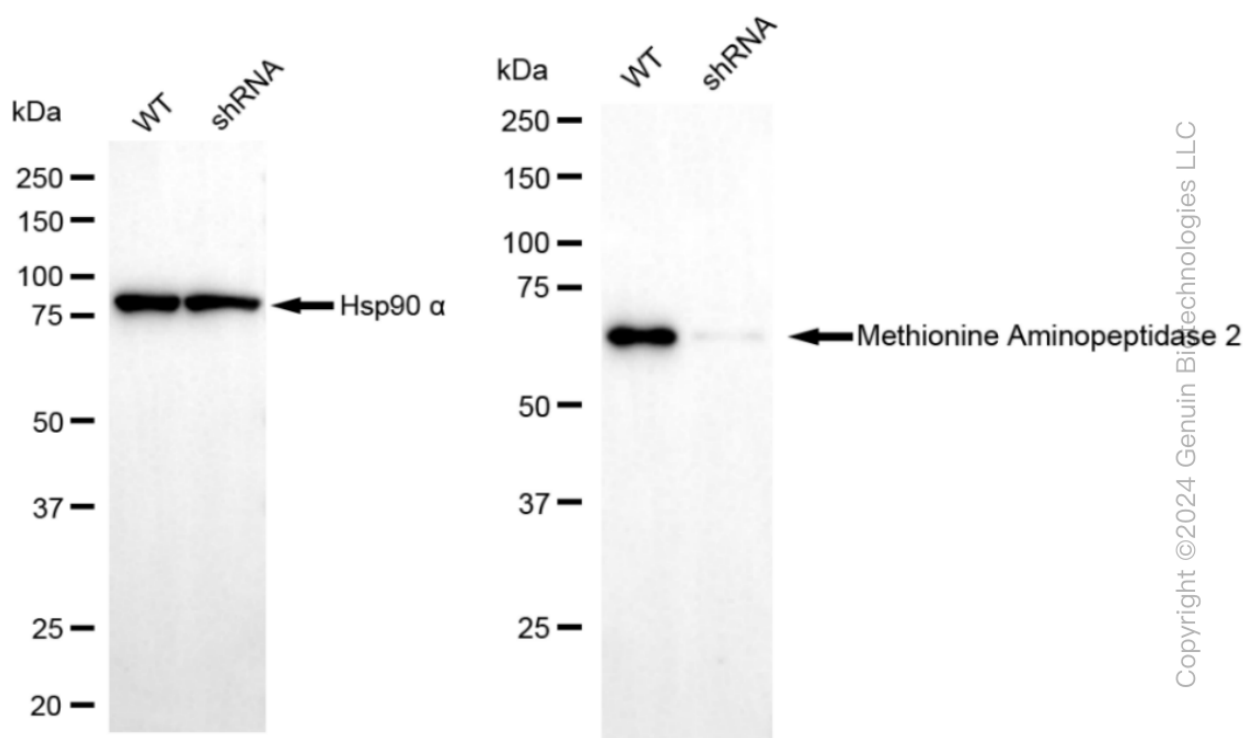
ORDERS

SALES@GENUINBIOTECH.COM
FAX: +1-540-855-7041

WWW.GENUINBIOTECH.COM

KD-Validated Anti-Methionyl aminopeptidase 2 Recombinant Rabbit Monoclonal Antibody

PAGE 7



Western blotting analysis using anti-Methionyl aminopeptidase 2 antibody (Cat#61489).

Methionyl aminopeptidase 2 expression in wild type (WT) and methionyl aminopeptidase 2 shRNA knockdown (KD) HeLa cells with 30 μ g of total cell lysates. β -Tubulin serves as a loading control. The blot was incubated with anti-Methionyl aminopeptidase 2 antibody (Cat#61489, 1:5000) and HRP-conjugated goat anti-rabbit secondary antibody (Cat#201, 1:20000) respectively. Image was developed using FeQTM ECL Substrate Kit (Cat#226).

SUPPORT

SUPPORT@GENUINBIOTECH.COM
TEL: +1-540-855-7041

ORDERS

SALES@GENUINBIOTECH.COM
FAX: +1-540-855-7041

WWW.GENUINBIOTECH.COM