

KD-Validated Anti-Matrix metallopeptidase 14 Recombinant Rabbit Monoclonal Antibody



Catalog #: 61492

Aliases

MMP14; Matrix Metallopeptidase 14; MT1-MMP; Matrix Metallopeptidase 14 (Membrane-Inserted); Membrane-Type-1 Matrix Metalloproteinase; Membrane Type 1 Metalloprotease; Matrix Metalloproteinase-14; EC 3.4.24.80; MT-MMP 1; MMP-14; MMP-X1; MT1MMP; MTMMP1; Matrix Metalloproteinase 14 (Membrane-Inserted); Membrane Type 1-Matrix Metalloproteinase; Membrane-Type Matrix Metalloproteinase 1; EC 3.4.24; MT-MMP; WNCHRS

Background

Gene Name: MMP14

NCBI Gene Entry: [4323](#)

UniProt Entry: [P50281](#)

Application Information

Molecular Weight: Predicted, 66 kDa, observed, 65 kDa

Clonality: Rabbit monoclonal antibody

Clone ID: 23GB2695

Species Reactivity: Human, rat

Applications Tested: Western blotting (WB), flow cytometry (FCM), immunocytochemistry (IC)

Immunogen

A synthesized peptide derived from human MMP14

Isotype

Rabbit IgG

Storage Buffer

Supplied in PBS (pH 7.4) containing 50% glycerol, and 0.02% sodium azide.

Storage

Store at -20 °C for one year.

Recommended Dilutions

Western Blotting (WB): 1:1,000-1:5,000

Flow Cytometry (FCM): 1:2,000

Immunocytochemistry (IC): 1:100-1:1,000

SUPPORT

SUPPORT@GENUINBIOTECH.COM
TEL: +1-540-855-7041

ORDERS

SALES@GENUINBIOTECH.COM
FAX: +1-540-855-7041

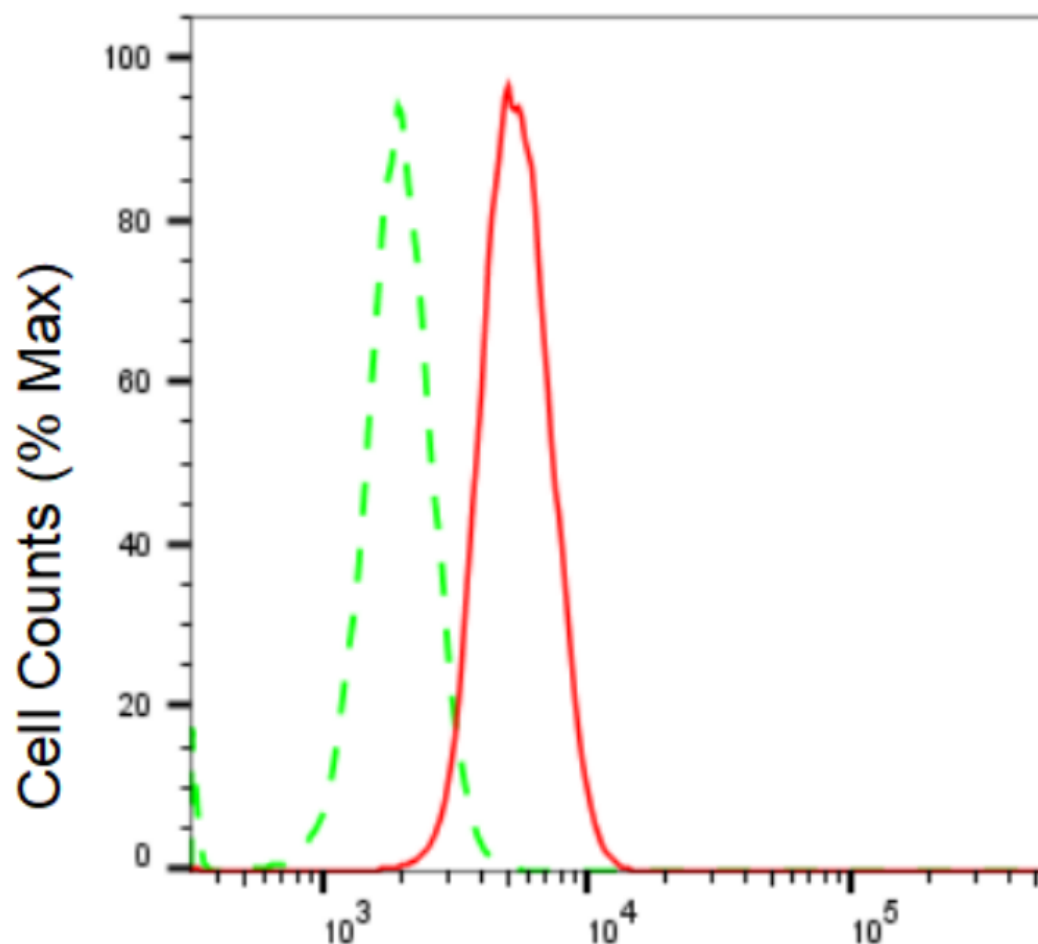
WWW.GENUINBIOTECH.COM

KD-Validated Anti-Matrix metallopeptidase 14 Recombinant Rabbit Monoclonal Antibody

PAGE 2

Note: This product is for research use only.

Validation Data



Copyright ©2024 Genuin Biotechnologies LLC

Matrix metallopeptidase 14-Alexa Fluor® 647

Flow cytometric analysis of Matrix metallopeptidase 14 expression in H9c2 cells using Matrix metallopeptidase 14 antibody (Cat#61492, 1:2,000). Green, isotype control; red, Matrix metallopeptidase 14.

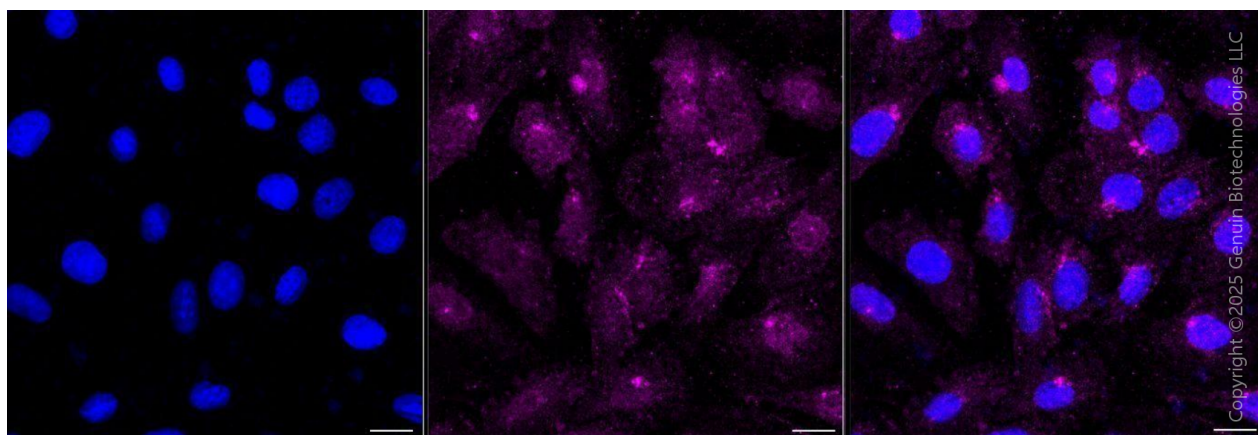
SUPPORT

SUPPORT@GENUINBIOTECH.COM
TEL: +1-540-855-7041

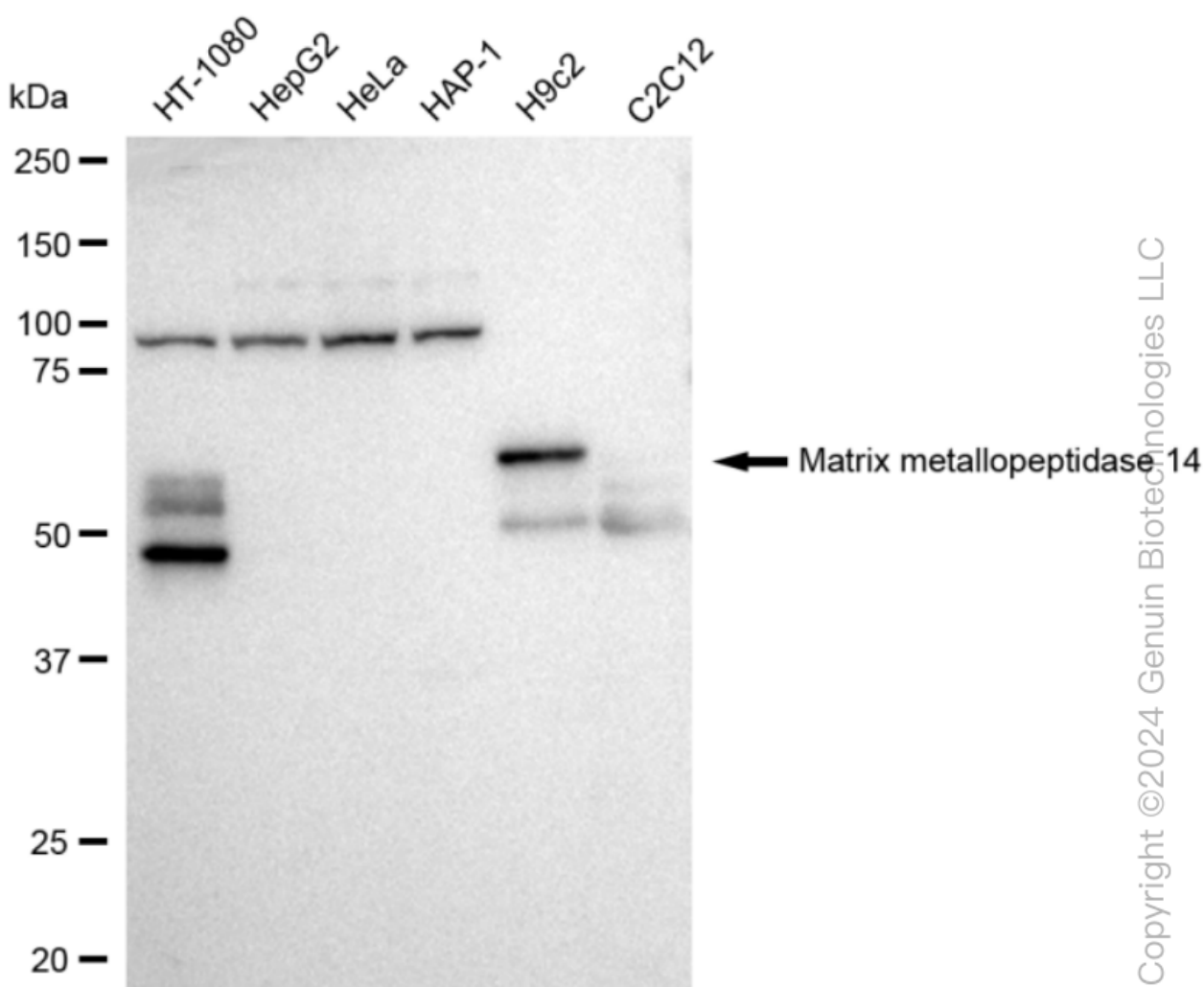
ORDERS

SALES@GENUINBIOTECH.COM
FAX: +1-540-855-7041

WWW.GENUINBIOTECH.COM



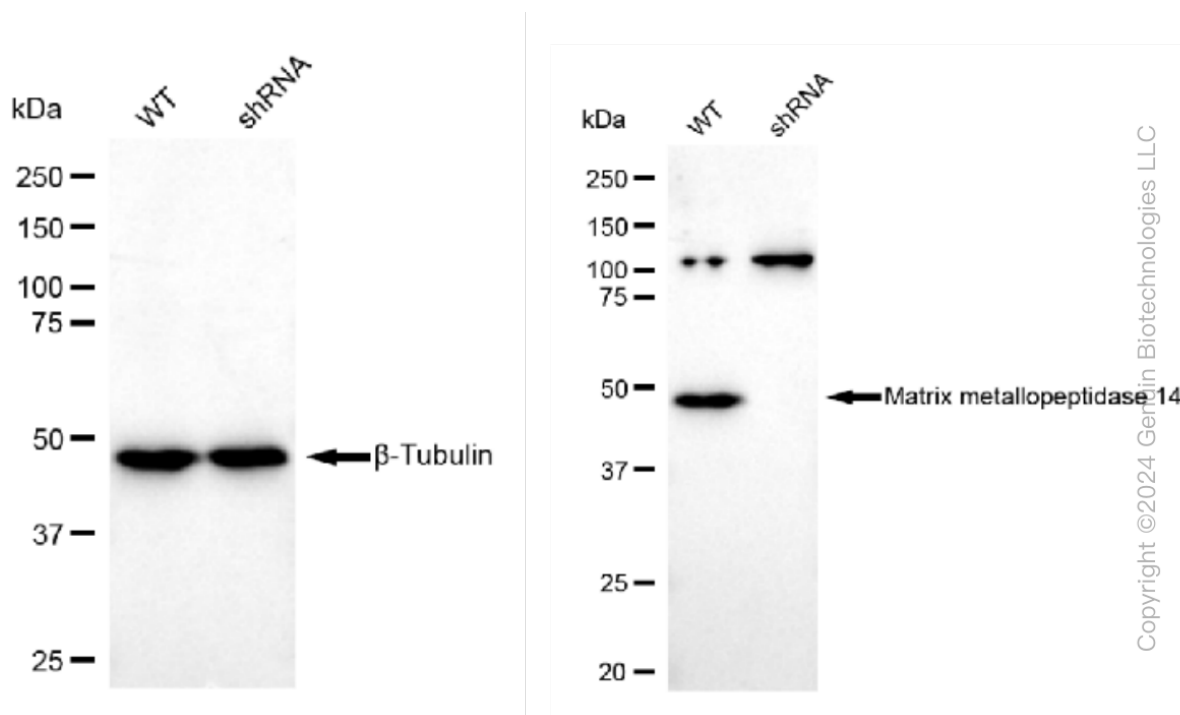
Immunocytochemical staining of H9C2 cells with anti-Matrix metalloproteinase 14 antibody (Cat#61492, 1:1,000) . Nuclei were stained blue with DAPI; Matrix metalloproteinase 14 was stained magenta with Alexa Fluor® 647. Images were taken using Leica stellaris 5. Protein abundance based on laser Intensity and smart gain: Medium. Scale bar, 20 μ m.



KD-Validated Anti-Matrix metallopeptidase 14 Recombinant Rabbit Monoclonal Antibody

PAGE 4

Western blotting analysis using anti-Matrix metallopeptidase 14 antibody (Cat#61492). Total cell lysates (30 µg) from various cell lines were loaded and separated by SDS-PAGE. The blot was incubated with anti-Matrix metallopeptidase 14 antibody (Cat#61492, 1:5,000) and HRP-conjugated goat anti-rabbit secondary antibody (Cat#201, 1:20,000) respectively. Image was developed using FeQ™ ECL Substrate Kit (Cat#226).



Western blotting analysis using anti-Matrix metallopeptidase 14 antibody (Cat#61492). Matrix metallopeptidase 14 expression in wild type (WT) and matrix metallopeptidase 14 shRNA knockdown (KD) HeLa cells with 30 µg of total cell lysates. β-Tubulin serves as a loading control. The blot was incubated with anti-Matrix metallopeptidase 14 antibody (Cat#61492, 1:5000) and HRP-conjugated goat anti-rabbit secondary antibody (Cat#201, 1:20000) respectively. Image was developed using FeQ™ ECL Substrate Kit (Cat#226).

SUPPORT

SUPPORT@GENUINBIOTECH.COM
TEL: +1-540-855-7041

ORDERS

SALES@GENUINBIOTECH.COM
FAX: +1-540-855-7041

WWW.GENUINBIOTECH.COM