

# KD-Validated Anti-PAFAH1B1 Recombinant Rabbit Monoclonal Antibody



**Catalog #: 61494**

## Aliases

PAFAH1B1; Platelet Activating Factor Acetylhydrolase 1b Regulatory Subunit 1; LIS1; PAFAH; MDCR; MDS; Platelet-Activating Factor Acetylhydrolase 1b, Regulatory Subunit 1 (45kDa); Platelet-Activating Factor Acetylhydrolase IB Subunit Beta; NudF; Platelet-Activating Factor Acetylhydrolase, Isoform Ib, Alpha Subunit (45kD); Platelet-Activating Factor Acetylhydrolase, Isoform Ib, Alpha Subunit 45kDa; Platelet-Activating Factor Acetylhydrolase, Isoform Ib, Subunit 1 (45kDa); Miller-Dieker Syndrome Chromosome Region; PAF Acetylhydrolase 45 KDa Subunit; Lissencephaly 1 Protein; Lissencephaly-1 Protein; PAF-AH 45 KDa Subunit; Lissencephaly-1; PAF-AH Alpha; PAFAH Alpha; PAFAHA; LIS-1; LIS2; NUDF

## Background

Gene Name: PAFAH1B1

NCBI Gene Entry: [5048](#)

UniProt Entry: [P43034](#)

## Application Information

Molecular Weight: Predicted, 47 kDa, observed, 47 kDa

Clonality: Rabbit monoclonal antibody

Clone ID: 23GB2825

Species Reactivity: Human, mouse, rat

Applications Tested: Western blotting (WB), flow cytometry (FCM), immunocytochemistry (IC)

## Immunogen

A synthesized peptide derived from human LIS1

## Isotype

Rabbit IgG

## Storage Buffer

Supplied in PBS (pH 7.4) containing 50% glycerol, and 0.02% sodium azide.

## Storage

Store at -20 °C for one year.

## Recommended Dilutions

Western Blotting (WB): 1:1,000-1:5,000

---

### SUPPORT

SUPPORT@GENUINBIOTECH.COM  
TEL: +1-540-855-7041

### ORDERS

SALES@GENUINBIOTECH.COM  
FAX: +1-540-855-7041

[WWW.GENUINBIOTECH.COM](http://WWW.GENUINBIOTECH.COM)

## KD-Validated Anti-PAFAH1B1 Recombinant Rabbit Monoclonal Antibody

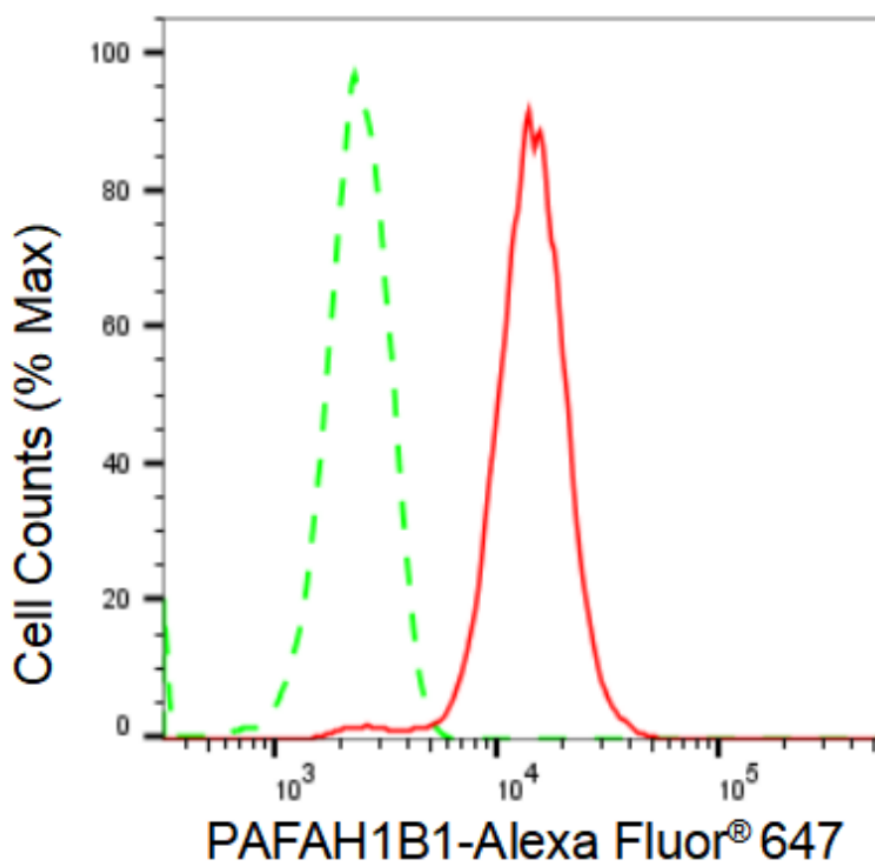
PAGE 2

Flow Cytometry (FCM): 1:2,000

Immunocytochemistry (IC): 1:100-1:1,000

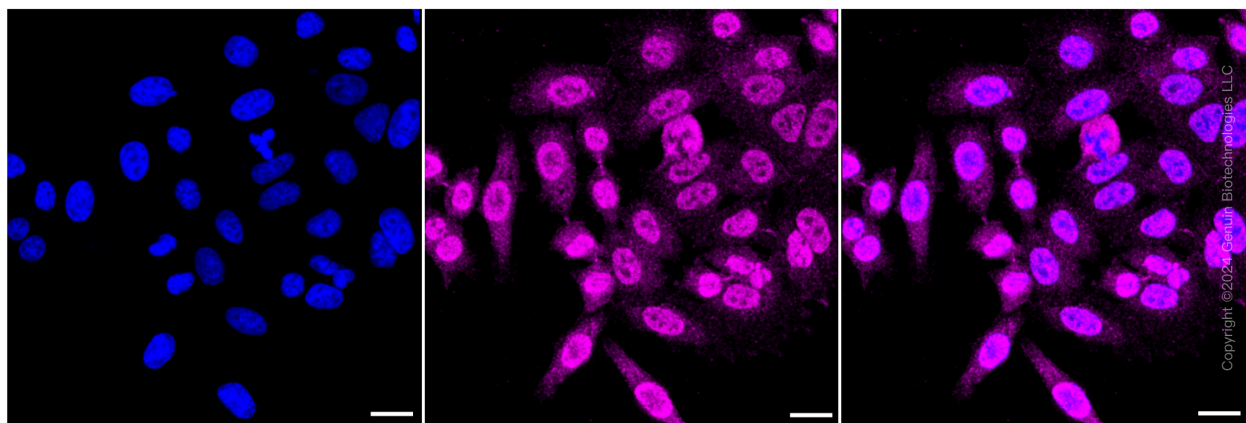
**Note:** This product is for research use only.

### Validation Data



Copyright ©2024 Genuin Biotechnologies LLC

Flow cytometric analysis of PAFAH1B1 expression in HepG2 cells using PAFAH1B1 antibody (Cat#61494, 1:2,000). Green, isotype control; red, PAFAH1B1.



Copyright ©2024 Genuin Biotechnologies LLC

Immunocytochemical staining of HepG2 cells with PAFAH1B1 antibody (Cat#61494, 1:1,000).

#### SUPPORT

SUPPORT@GENUINBIOTECH.COM  
TEL: +1-540-855-7041

#### ORDERS

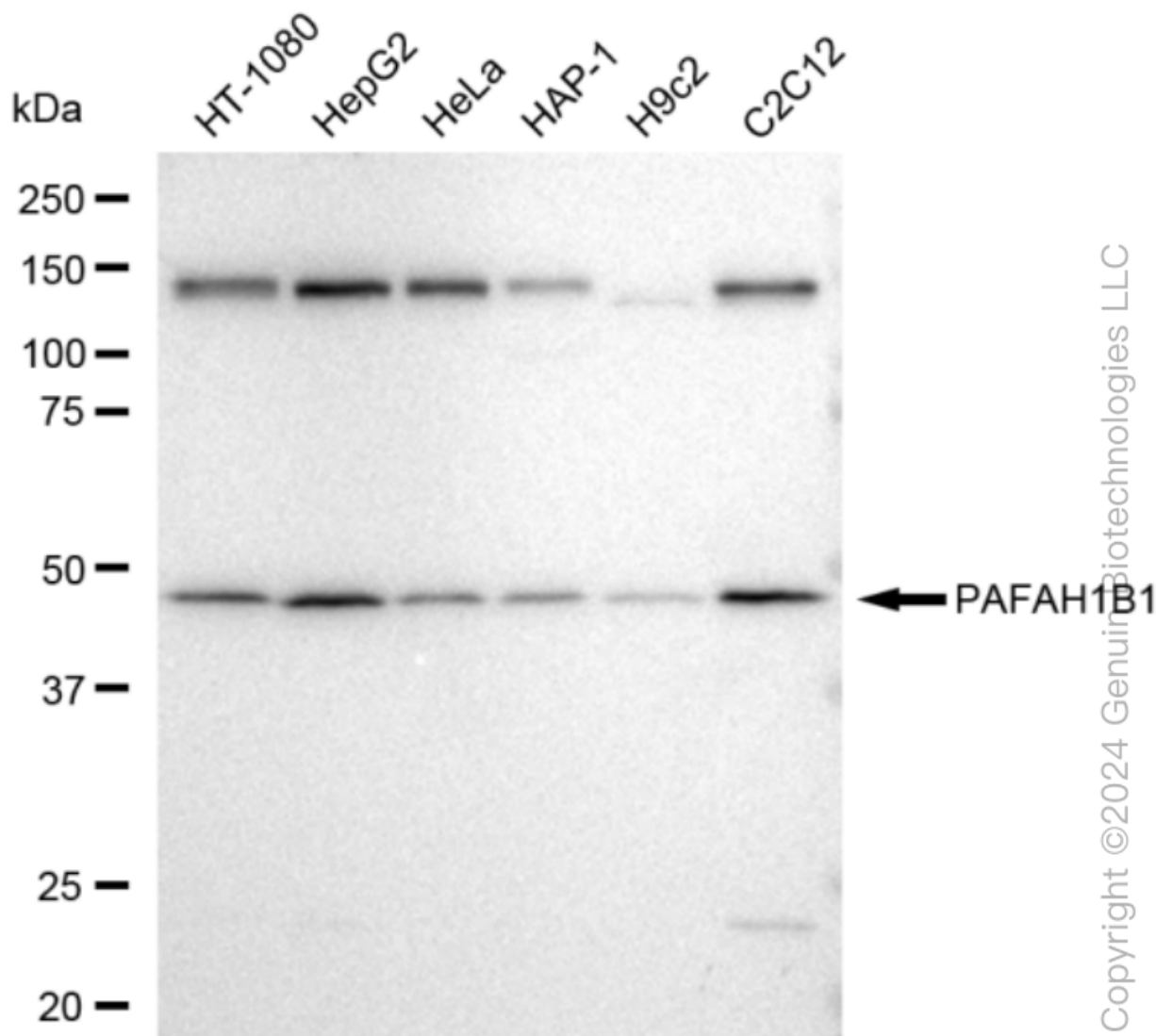
SALES@GENUINBIOTECH.COM  
FAX: +1-540-855-7041

WWW.GENUINBIOTECH.COM

## KD-Validated Anti-PAFAH1B1 Recombinant Rabbit Monoclonal Antibody

PAGE 3

Nuclei were stained blue with DAPI; PAFAH1B1 was stained magenta with Alexa Fluor® 647. Images were taken using Leica stellaris 5. Protein abundance based on laser Intensity and smart gain: High. Scale bar: 20  $\mu$ m.



Western blotting analysis using anti-PAFAH1B1 antibody (Cat#61494). Total cell lysates (30  $\mu$ g) from various cell lines were loaded and separated by SDS-PAGE. The blot was incubated with anti-PAFAH1B1 antibody (Cat#61494, 1:5,000) and HRP-conjugated goat anti-rabbit secondary antibody (Cat#201, 1:20,000) respectively. Image was developed using FeQ™ ECL Substrate Kit (Cat#226). PAFAH1B1, platelet activating factor acetylhydrolase 1b regulatory subunit 1.

### SUPPORT

SUPPORT@GENUINBIOTECH.COM  
TEL: +1-540-855-7041

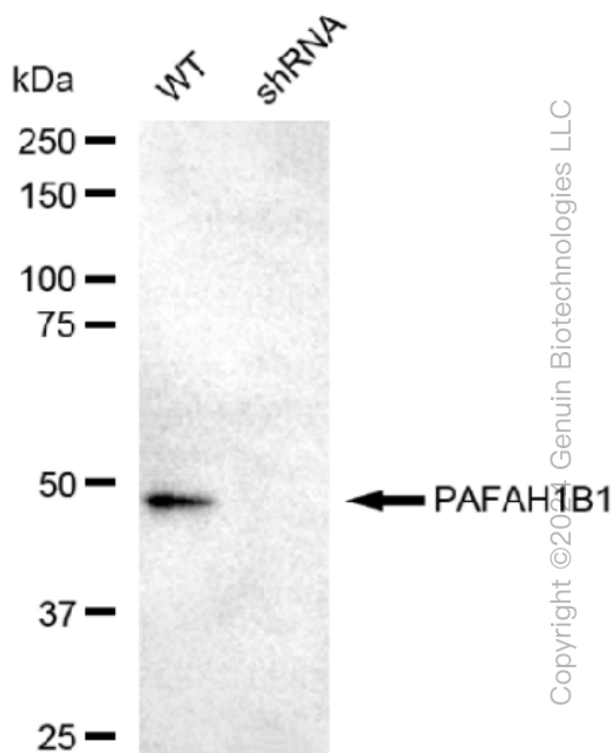
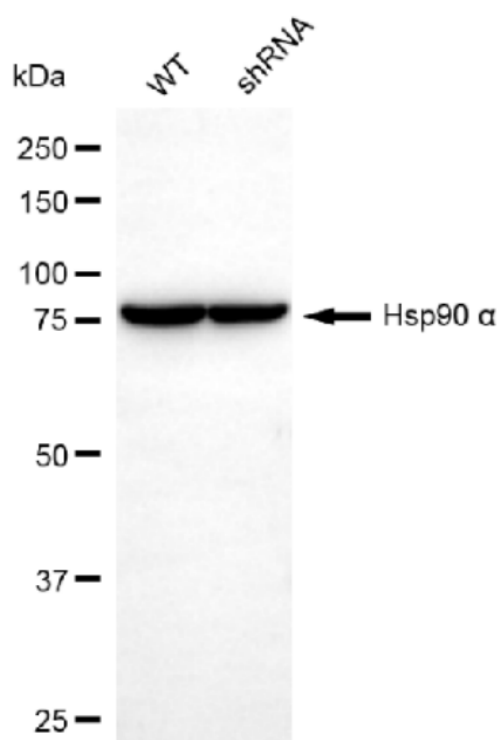
### ORDERS

SALES@GENUINBIOTECH.COM  
FAX: +1-540-855-7041

WWW.GENUINBIOTECH.COM

## KD-Validated Anti-PAFAH1B1 Recombinant Rabbit Monoclonal Antibody

PAGE 4



Copyright ©2014 Genuin Biotechnologies LLC

Western blotting analysis using anti-PAFAH1B1 antibody (Cat#61494). PAFAH1B1 expression in wild type (WT) and PAFAH1B1 shRNA knockdown (KD) HeLa cells with 30 µg of total cell lysates. Hsp90 α serves as a loading control. The blot was incubated with anti-PAFAH1B1 antibody (Cat#61494, 1:5,000) and HRP-conjugated goat anti-rabbit secondary antibody (Cat#201, 1:20,000) respectively. Image was developed using FeQ™ ECL Substrate Kit (Cat#226).

### SUPPORT

SUPPORT@GENUINBIOTECH.COM  
TEL: +1-540-855-7041

### ORDERS

SALES@GENUINBIOTECH.COM  
FAX: +1-540-855-7041

WWW.GENUINBIOTECH.COM