

KD-Validated Anti-Paired box 6 Recombinant Rabbit Monoclonal Antibody



Catalog #: 61495

Aliases

Paired Box 6; D11S812E; WAGR; AN2; AN; Paired Box Protein Pax-6; Aniridia Type II Protein; Oculorhombin; Aniridia 1; Aniridia 2; AN1; Paired Box Gene 6 (Aniridia, Keratitis); Paired Box 6 PAX6A-ASdel6-AS7 Isoform; Paired Box 6 PAX6A-ASdel6 Isoform; Paired Box 6 PAX6B-ASdel6 Isoform; Paired Box 6 PAX6A-Del6 Isoform; Paired Box 6 PAX6-12a Isoform; Paired Box 6 PAX6D Isoform; Paired Box Homeotic Gene-6; Alternative Protein PAX6; Aniridia, Keratitis; ASGD5; FVH1; MGDA;

Background

Gene Name: PAX6

NCBI Gene Entry: [5080](#)

UniProt Entry: [P26367](#)

Application Information

Molecular Weight: Predicted, 55 kDa, observed, 47 kDa

Clonality: Rabbit monoclonal antibody

Clone ID: 23GB2875

Species Reactivity: Human

Applications Tested: Western blotting (WB), flow cytometry (FCM), immunocytochemistry (IC)

Immunogen

A synthesized peptide derived from human PAX6

Isotype

Rabbit IgG

Storage Buffer

Supplied in PBS (pH 7.4) containing 50% glycerol, and 0.02% sodium azide.

Storage

Store at -20 °C for one year.

Recommended Dilutions

Western Blotting (WB): 1:1,000-1:5,000

Flow Cytometry (FCM): 1:2,000

Immunocytochemistry (IC): 1:100-1:1,000

SUPPORT

SUPPORT@GENUINBIOTECH.COM
TEL: +1-540-855-7041

ORDERS

SALES@GENUINBIOTECH.COM
FAX: +1-540-855-7041

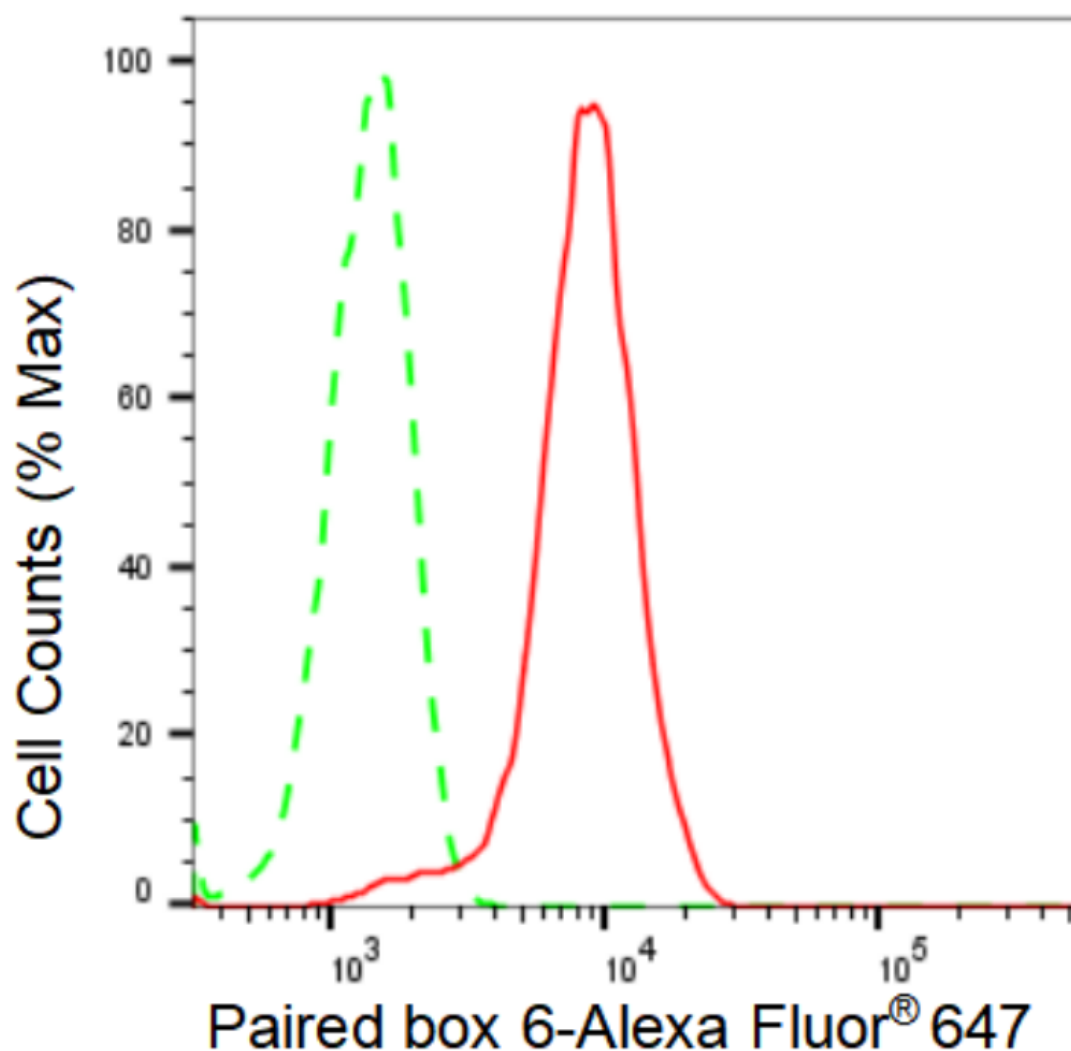
WWW.GENUINBIOTECH.COM

KD-Validated Anti-Paired box 6 Recombinant Rabbit Monoclonal Antibody

PAGE 2

Note: This product is for research use only.

Validation Data



Copyright ©2024 Genuin Biotechnologies LLC

Flow cytometric analysis of Paired box 6 expression in HeLa cells using Paired box 6 antibody (Cat#61495, 1:2,000). Green, isotype control; red, Paired box 6.

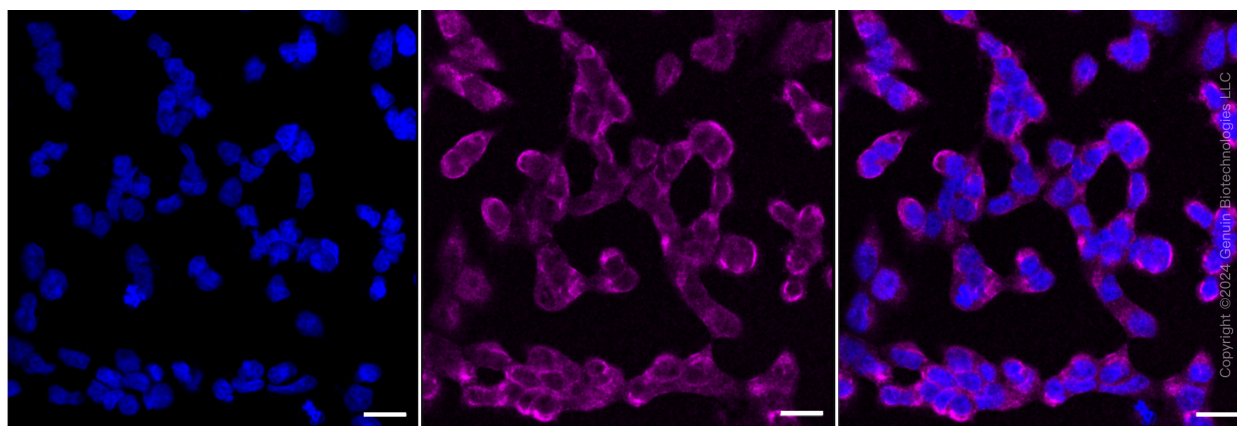
SUPPORT

SUPPORT@GENUINBIOTECH.COM
TEL: +1-540-855-7041

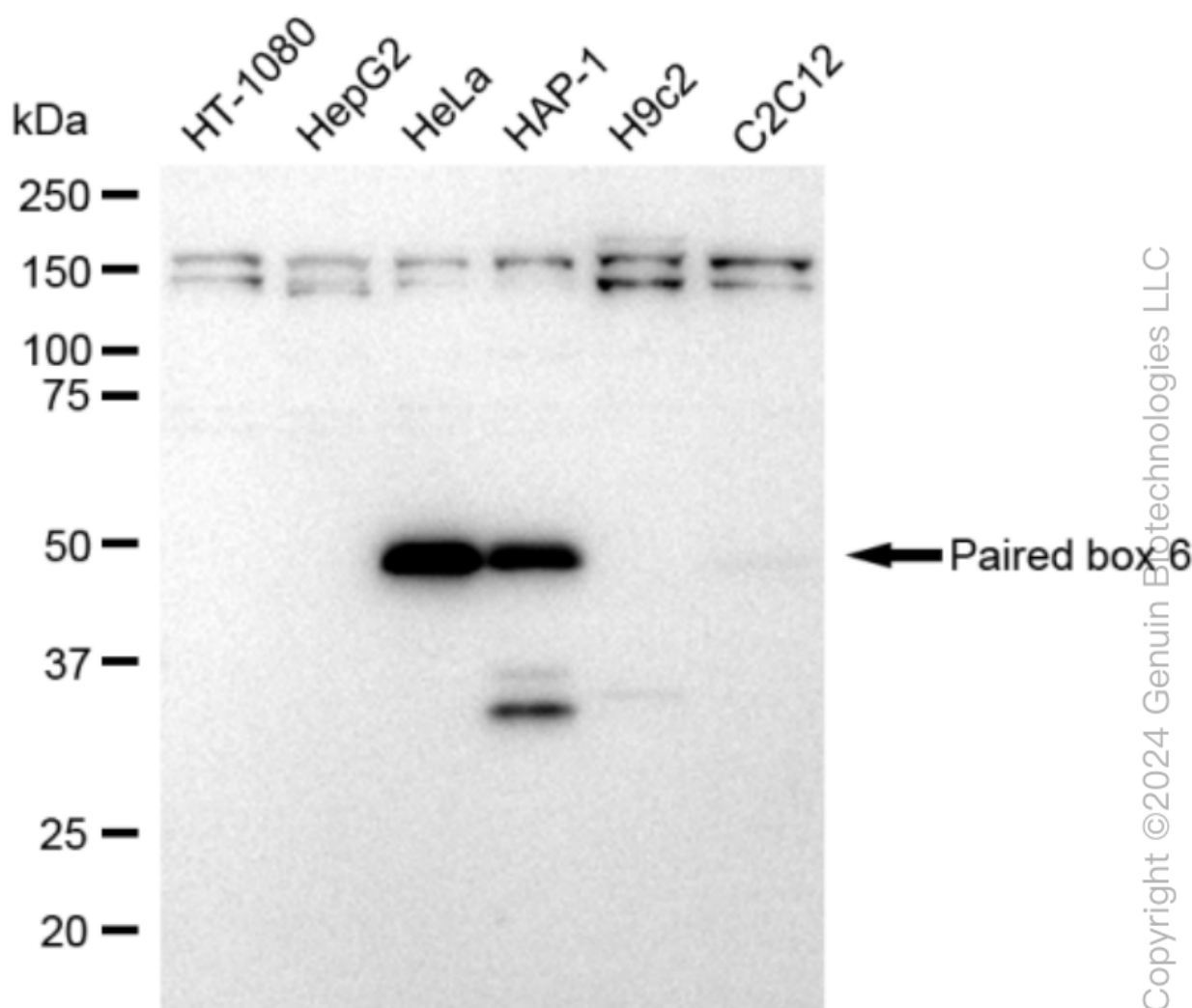
ORDERS

SALES@GENUINBIOTECH.COM
FAX: +1-540-855-7041

WWW.GENUINBIOTECH.COM



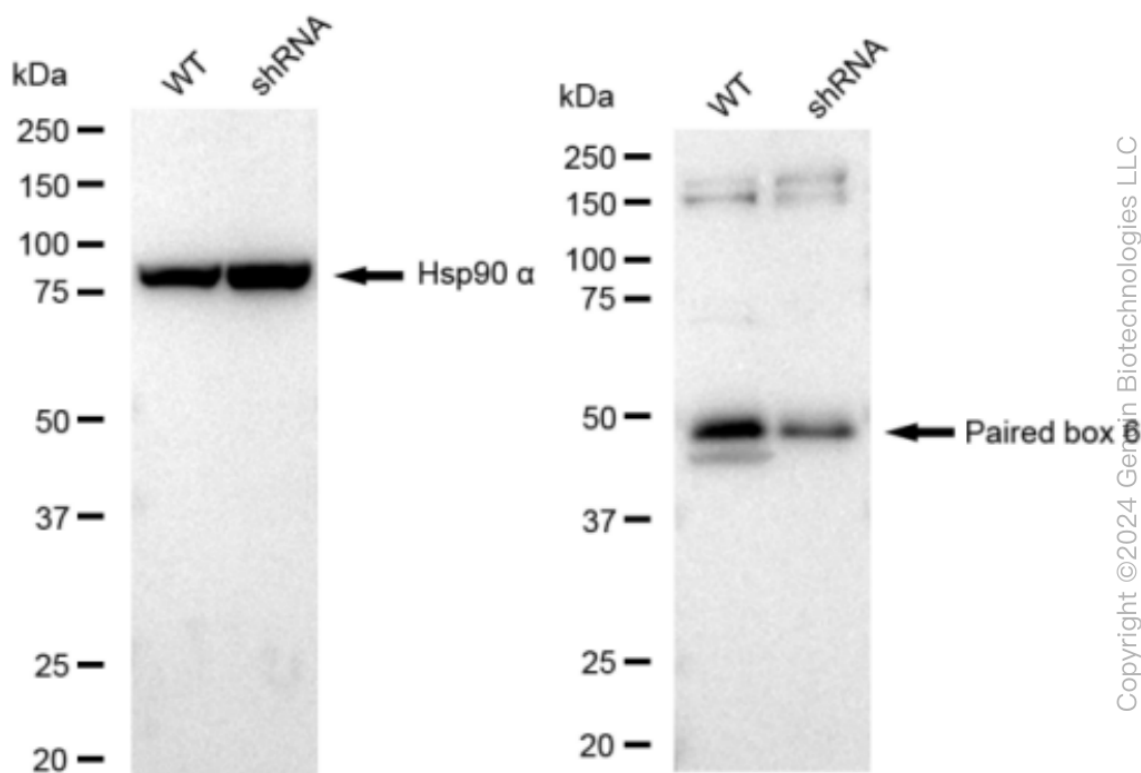
Immunocytochemical staining of HeLa cells with Paired box 6 antibody (Cat#61495, 1:1,000). Nuclei were stained blue with DAPI; Paired box 6 was stained magenta with Alexa Fluor® 647. Images were taken using Leica stellaris 5. Protein abundance based on laser Intensity and smart gain: Medium. Scale bar: 20 μ m.



KD-Validated Anti-Paired box 6 Recombinant Rabbit Monoclonal Antibody

PAGE 4

Western blotting analysis using anti-Paired box 6 antibody (Cat#61495). Total cell lysates (30 µg) from various cell lines were loaded and separated by SDS-PAGE. The blot was incubated with anti-Paired box 6 antibody (Cat#61495, 1:5,000) and HRP-conjugated goat anti-rabbit secondary antibody (Cat#201, 1:20,000) respectively. Image was developed using FeQ™ ECL Substrate Kit (Cat#226).



Western blotting analysis using anti-Paired box 6 antibody (Cat#61495). Paired box 6 expression in wild type (WT) and paired box 6 shRNA knockdown (KD) HeLa cells with 30 µg of total cell lysates. Hsp90 α serves as a loading control. The blot was incubated with anti-Paired box 6 antibody (Cat#61495, 1:5,000) and HRP-conjugated goat anti-rabbit secondary antibody (Cat#201, 1:20,000) respectively. Image was developed using FeQ™ ECL Substrate Kit (Cat#226).

SUPPORT

SUPPORT@GENUINBIOTECH.COM
TEL: +1-540-855-7041

ORDERS

SALES@GENUINBIOTECH.COM
FAX: +1-540-855-7041

WWW.GENUINBIOTECH.COM