

# KD-Validated Anti-Peptidase D Recombinant Rabbit Monoclonal Antibody



**Catalog #: 61496**

## Aliases

PEPD; Peptidase D; Xaa-Pro Dipeptidase; Imidodipeptidase; Proline Dipeptidase; X-Pro Dipeptidase; Prolidase; Testicular Tissue Protein Li 138; Aminoacyl-L-Proline Hydrolase; EC 3.4.13.9; PROLIDASE; PRD

## Background

Gene Name: PEPD

NCBI Gene Entry: [5184](#)

UniProt Entry: [P12955](#)

## Application Information

Molecular Weight: Predicted, 55 kDa, observed, 55 kDa

Clonality: Rabbit monoclonal antibody

Clone ID: 23GB2830

Species Reactivity: Human

Applications Tested: Western blotting (WB), flow cytometry (FCM), immunocytochemistry (IC), Immunohistochemistry (IHC)

## Immunogen

A synthesized peptide derived from human PRD

## Isotype

Rabbit IgG

## Storage Buffer

Supplied in PBS (pH 7.4) containing 50% glycerol, and 0.02% sodium azide.

## Storage

Store at -20 °C for one year.

## Recommended Dilutions

Western Blotting (WB): 1:1,000-1:5,000

Flow Cytometry (FCM): 1:200-1:2,000

Immunocytochemistry (IC): 1:100-1:1,000

Immunohistochemistry (IHC): 1:100-1:200

---

### SUPPORT

SUPPORT@GENUINBIOTECH.COM  
TEL: +1-540-855-7041

### ORDERS

SALES@GENUINBIOTECH.COM  
FAX: +1-540-855-7041

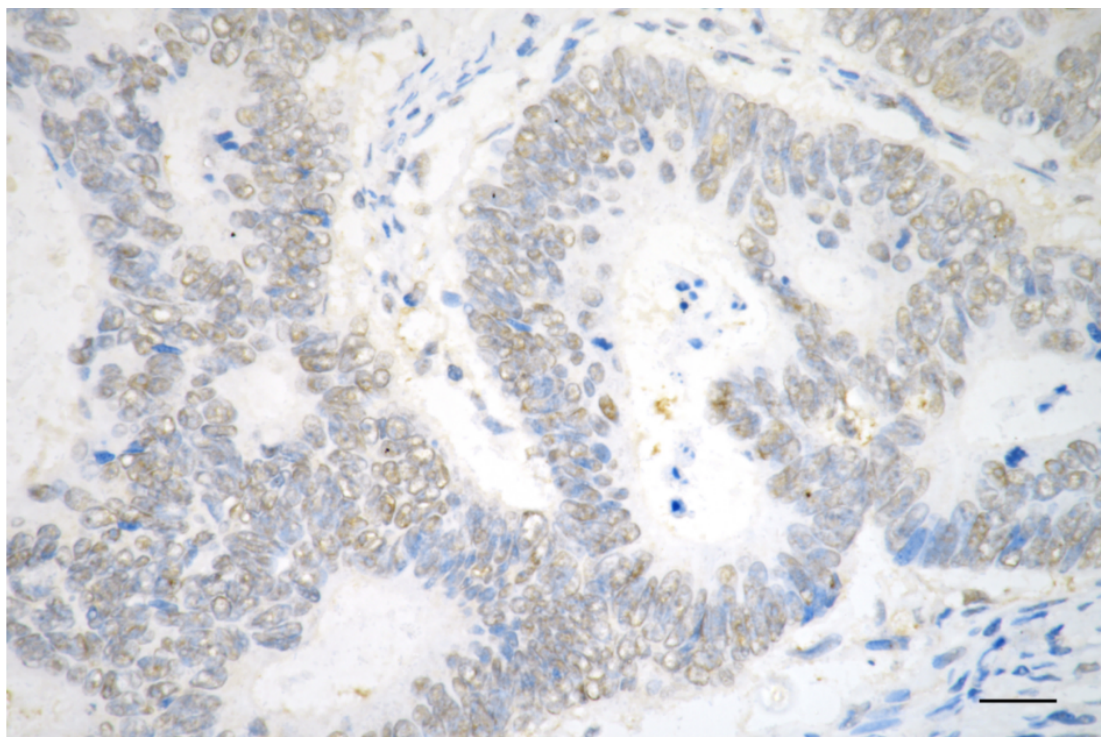
[WWW.GENUINBIOTECH.COM](http://WWW.GENUINBIOTECH.COM)

# KD-Validated Anti-Peptidase D Recombinant Rabbit Monoclonal Antibody

PAGE 2

**Note:** This product is for research use only.

## Validation Data



Copyright ©2025 Genuin Biotechnologies LLC

Immunohistochemistry was performed on paraffin-embedded human sigmoid colon carcinoma using anti-peptidase D antibody (Cat#61496, 1:200). Antigen retrieval was done in sodium citrate buffer (pH 6.0). DAB was used for detection, with hematoxylin counterstaining. Images were acquired using a Nikon Ci-L Plus microscope (40× objective). Scale bar: 25  $\mu$ m.

---

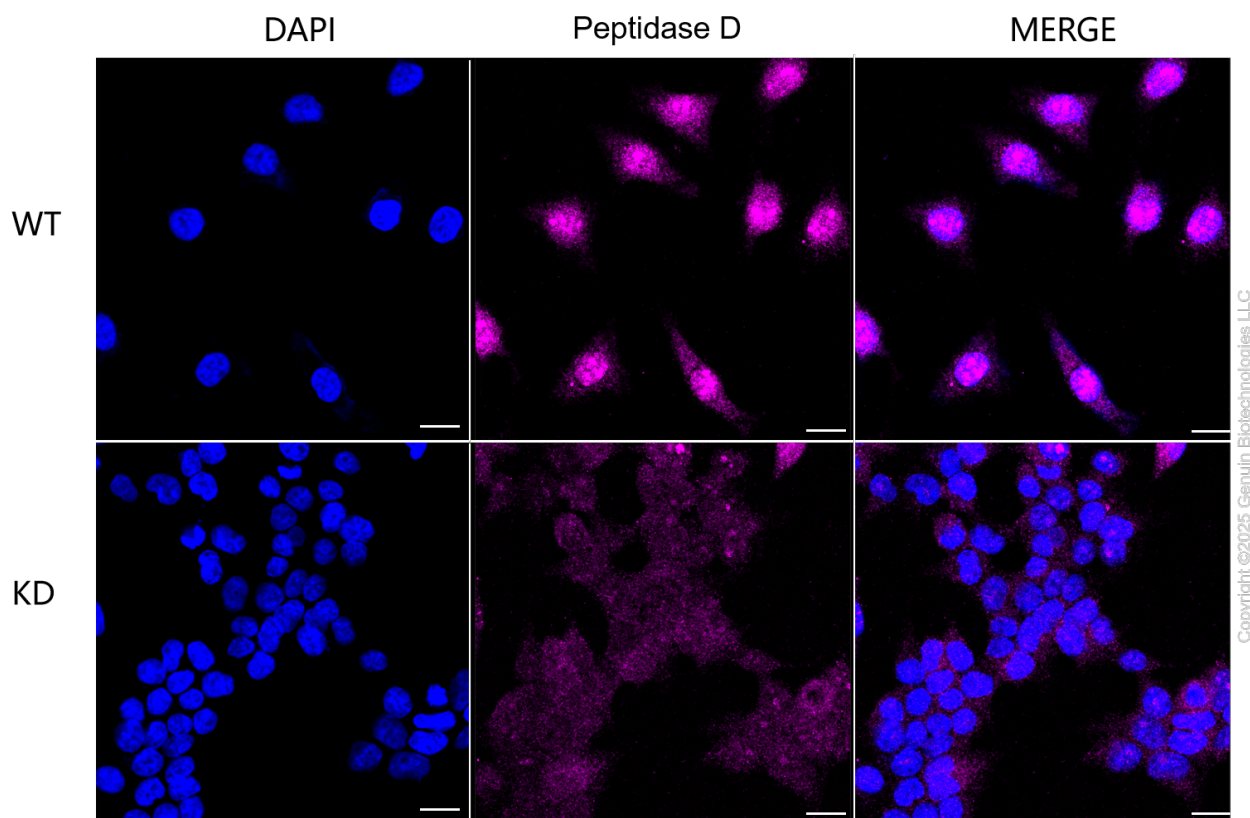
### SUPPORT

SUPPORT@GENUINBIOTECH.COM  
TEL: +1-540-855-7041

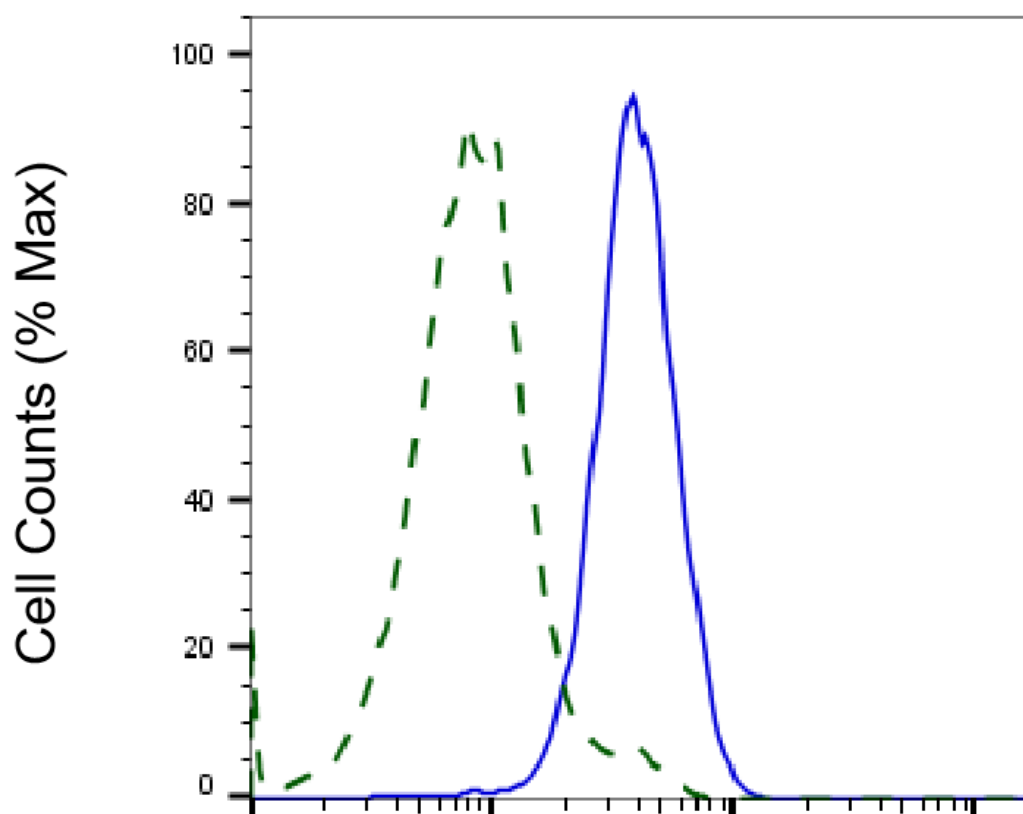
### ORDERS

SALES@GENUINBIOTECH.COM  
FAX: +1-540-855-7041

[WWW.GENUINBIOTECH.COM](http://WWW.GENUINBIOTECH.COM)



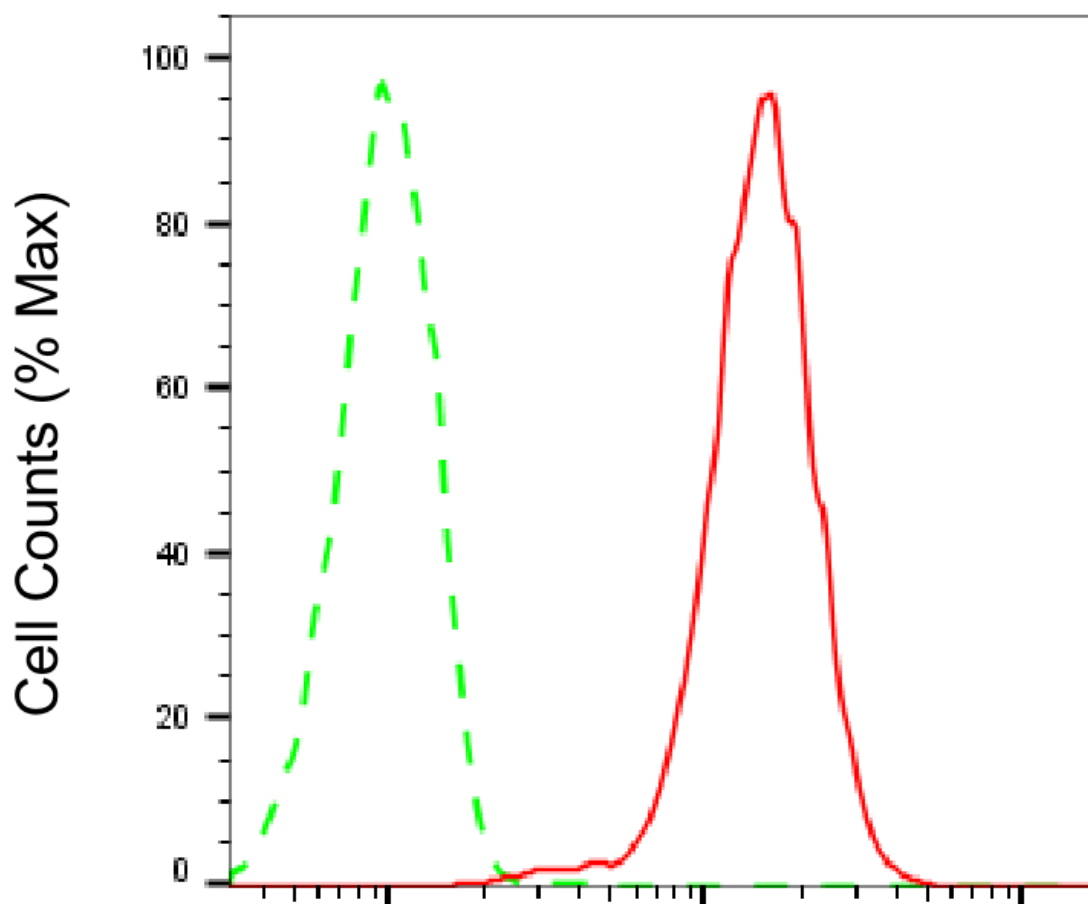
Immunocytochemical staining of HeLa cells using anti-Peptidase D antibody (Cat#61496, 1:1,000), Top panel: wild-type (WT); Bottom panel: Peptidase D shRNA knockdown (KD). Nuclei were stained blue with DAPI; Peptidase D was stained magenta with Alexa Fluor® 647. Scale bar, 20  $\mu$ m. Permeabilization: Triton.



Copyright ©2025 Genuin Biotechnologies LLC

## Peptidase D-Alexa Fluor® 647

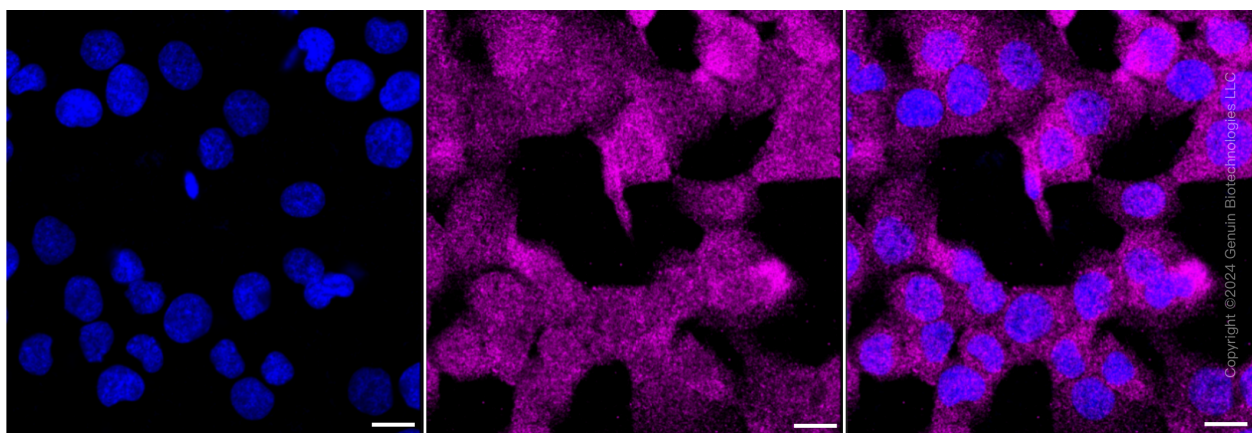
Validation of Peptidase D knockdown using flow cytometry. Wild-type(WT, Blue) and knockdown(KD, Green) HeLa cells were stained with anti-Peptidase D antibody (Cat#61496, 1:2,000) and analyzed using CytoFLEX.



Copyright ©2025 Genuin Biotechnologies LLC

### Peptidase D-Alexa Fluor® 647

Flow cytometric analysis of Peptidase D expression in HT-1080 cells using Peptidase D antibody (Cat#61496, 1:2,000). Green, isotype control; red, Peptidase D.



Copyright ©2024 Genuin Biotechnologies LLC

Immunocytochemical staining of HT-1080 cells with Peptidase D antibody (Cat#61496, 1:1,000). Nuclei were stained blue with DAPI; Peptidase D was stained magenta with Alexa Fluor® 647.

#### SUPPORT

SUPPORT@GENUINBIOTECH.COM  
TEL: +1-540-855-7041

#### ORDERS

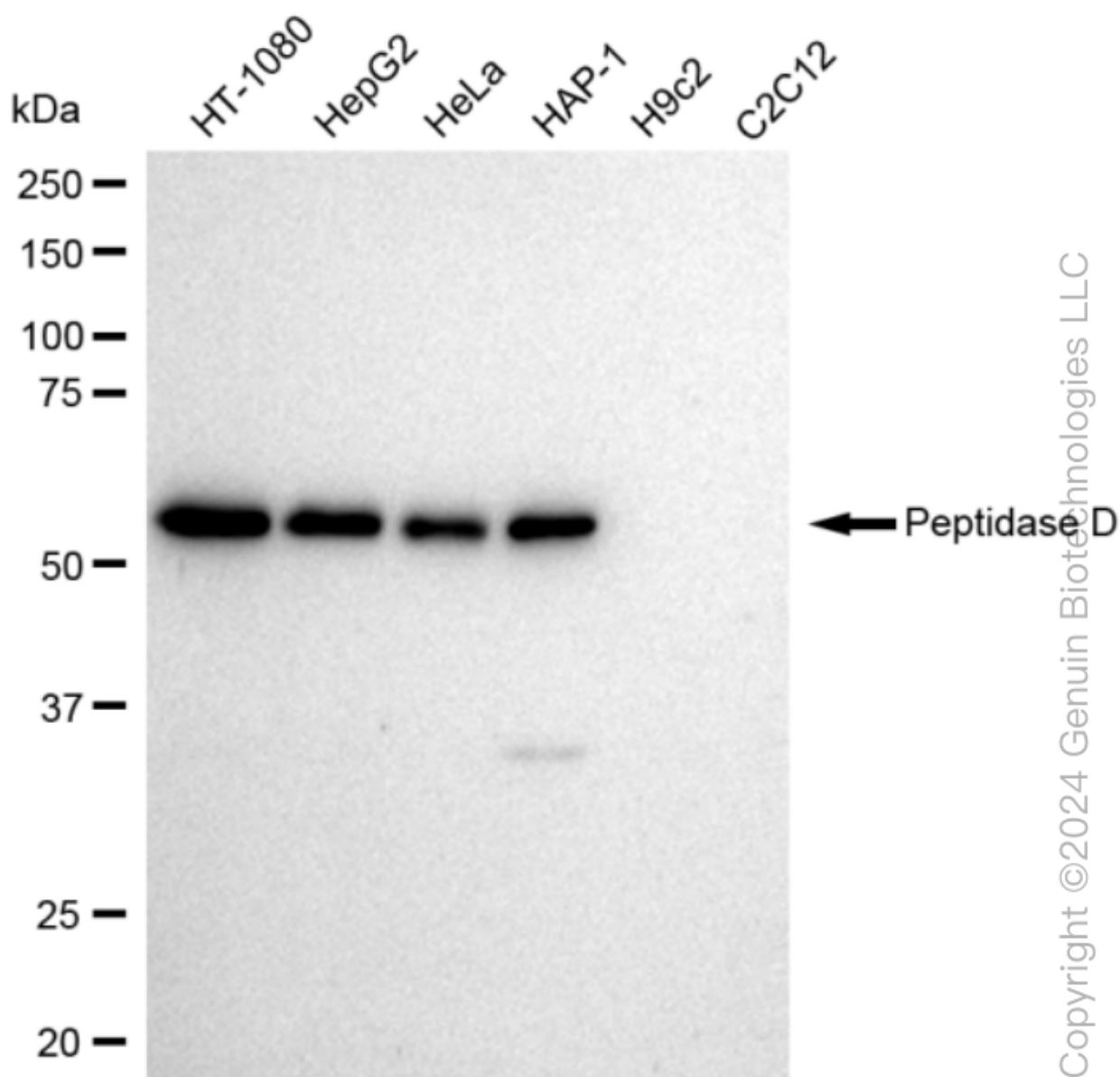
SALES@GENUINBIOTECH.COM  
FAX: +1-540-855-7041

[WWW.GENUINBIOTECH.COM](http://WWW.GENUINBIOTECH.COM)

## KD-Validated Anti-Peptidase D Recombinant Rabbit Monoclonal Antibody

PAGE 6

Images were taken using Leica stellaris 5. Protein abundance based on laser Intensity and smart gain: Medium. Scale bar: 20  $\mu$ m.



Western blotting analysis using anti-Peptidase D antibody (Cat#61496). Total cell lysates (30  $\mu$ g) from various cell lines were loaded and separated by SDS-PAGE. The blot was incubated with anti-Peptidase D antibody (Cat#61496, 1:5,000) and HRP-conjugated goat anti-rabbit secondary antibody (Cat#201, 1:20,000) respectively. Image was developed using FeQ™ ECL Substrate Kit (Cat#226).

### SUPPORT

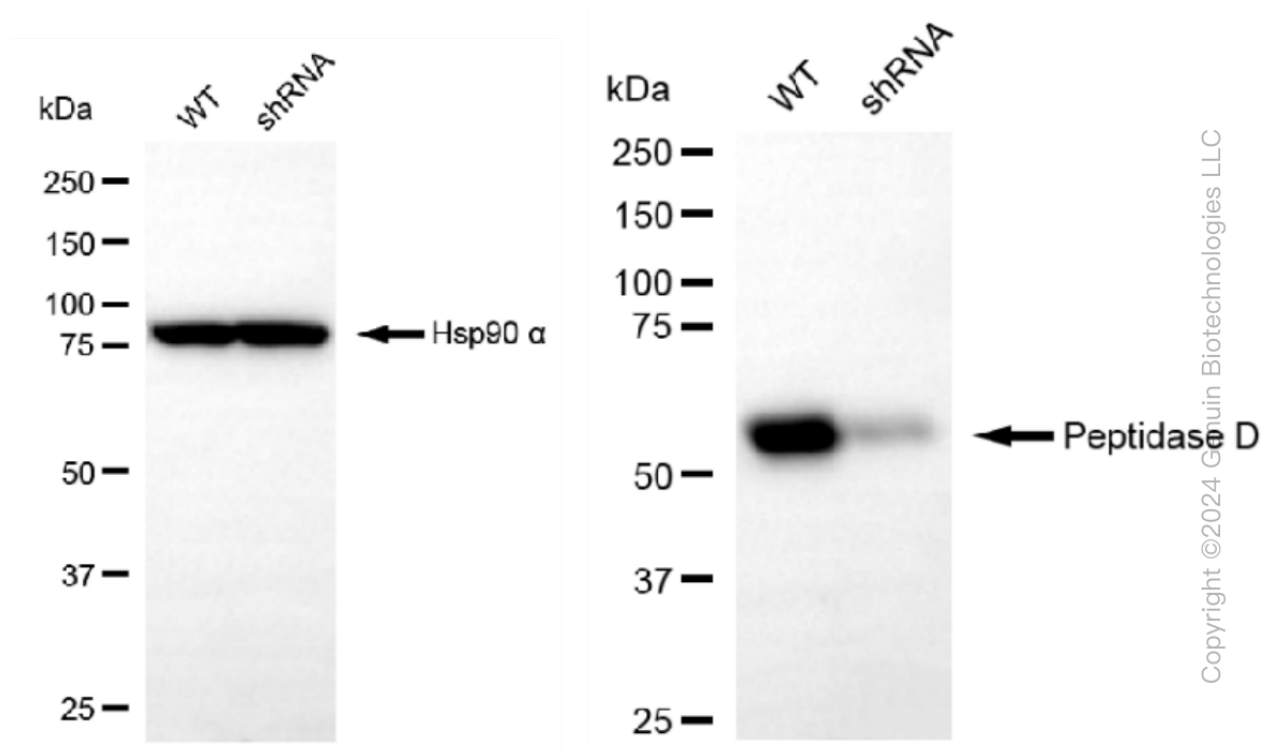
SUPPORT@GENUINBIOTECH.COM  
TEL: +1-540-855-7041

### ORDERS

SALES@GENUINBIOTECH.COM  
FAX: +1-540-855-7041

[WWW.GENUINBIOTECH.COM](http://WWW.GENUINBIOTECH.COM)





Western blotting analysis using anti-Peptidase D antibody (Cat#61496). Peptidase D expression in wild type (WT) and peptidase D shRNA knockdown (KD) HeLa cells with 30 µg of total cell lysates. Hsp90 α serves as a loading control. The blot was incubated with anti-Peptidase D antibody (Cat#61496, 1:5,000) and HRP-conjugated goat anti-rabbit secondary antibody (Cat#201, 1:20,000) respectively. Image was developed using FeQ™ ECL Substrate Kit (Cat#226).