

KD-Validated Anti-PFKM Recombinant Rabbit Monoclonal Antibody



Catalog #: 61497

Aliases

PFKM; Phosphofructokinase, Muscle; PPP1R122; PFK-1; PFKX; ATP-Dependent 6-Phosphofructokinase, Muscle Type; Protein Phosphatase 1, Regulatory Subunit 122; Phosphofructokinase, Polypeptide X; Phosphofructo-1-Kinase Isozyme A; 6-Phosphofructokinase Type A; Phosphohexokinase; EC 2.7.1.11; ATP-PFK; PFK-A; 6-Phosphofructokinase, Muscle Type; 6-Phosphofructo-1-Kinase; Phosphofructokinase 1; Phosphofructokinase-M; EC 2.7.1; PFK-M; GSD7; PFK1; PFKA

Background

Gene Name: PFKM

NCBI Gene Entry: [5213](#)

UniProt Entry: [P08237](#)

Application Information

Molecular Weight: Predicted, 85 kDa, observed, 75 kDa

Clonality: Rabbit monoclonal antibody

Clone ID: 23GB2740

Species Reactivity: Human, mouse, rat

Applications Tested: Western blotting (WB), flow cytometry (FCM), immunocytochemistry (IC)

Immunogen

A synthesized peptide derived from human Fructose 6 Phosphate Kinase

Isotype

Rabbit IgG

Storage Buffer

Supplied in PBS (pH 7.4) containing 50% glycerol, and 0.02% sodium azide.

Storage

Store at -20 °C for one year.

Recommended Dilutions

Western Blotting (WB): 1:1,000-1:5,000

Flow Cytometry (FCM): 1:2,000

Immunocytochemistry (IC): 1:100-1:1,000

SUPPORT

SUPPORT@GENUINBIOTECH.COM
TEL: +1-540-855-7041

ORDERS

SALES@GENUINBIOTECH.COM
FAX: +1-540-855-7041

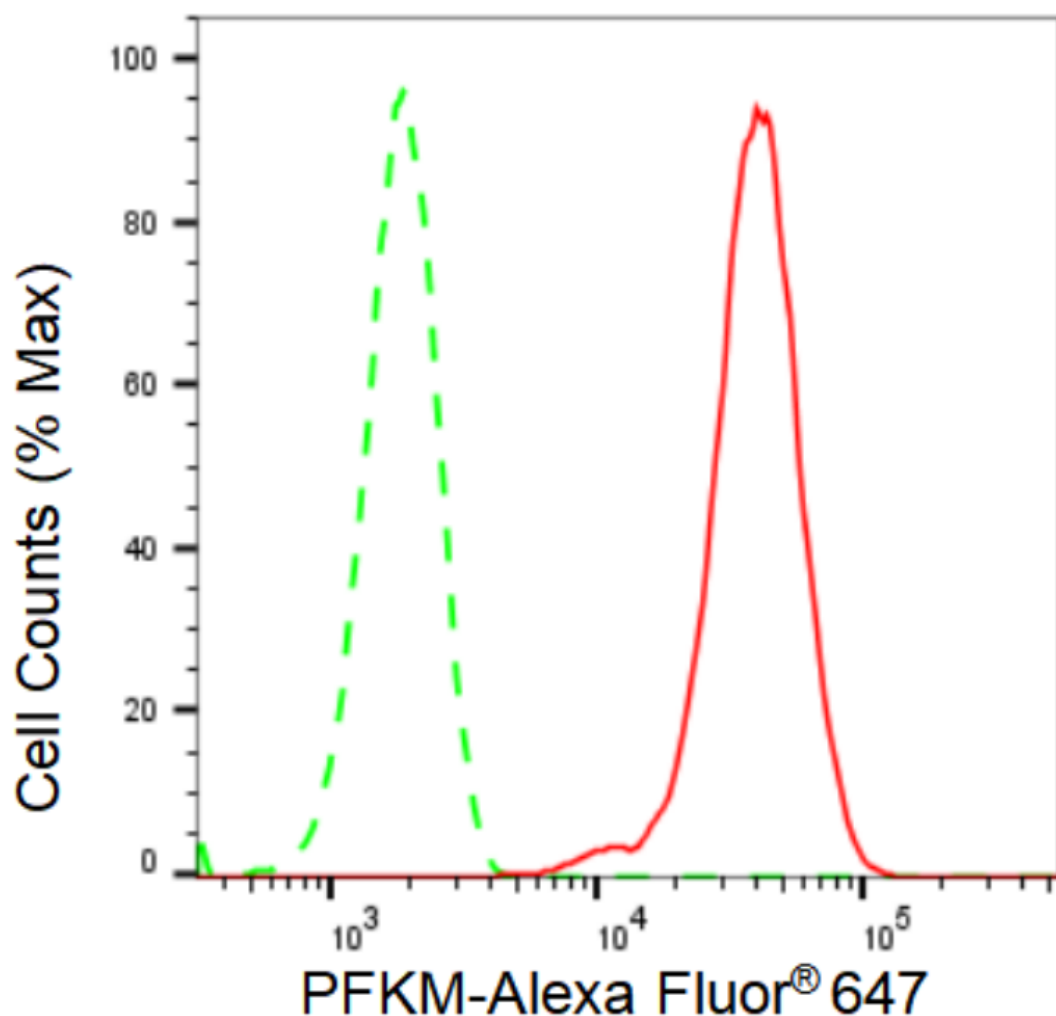
WWW.GENUINBIOTECH.COM

KD-Validated Anti-PFKM Recombinant Rabbit Monoclonal Antibody

PAGE 2

Note: This product is for research use only.

Validation Data



Copyright ©2024 Genuin Biotechnologies LLC

Flow cytometric analysis of PFKM expression in HepG2 cells using PFKM antibody (Cat#61497, 1:2,000). Green, isotype control; red, PFKM.

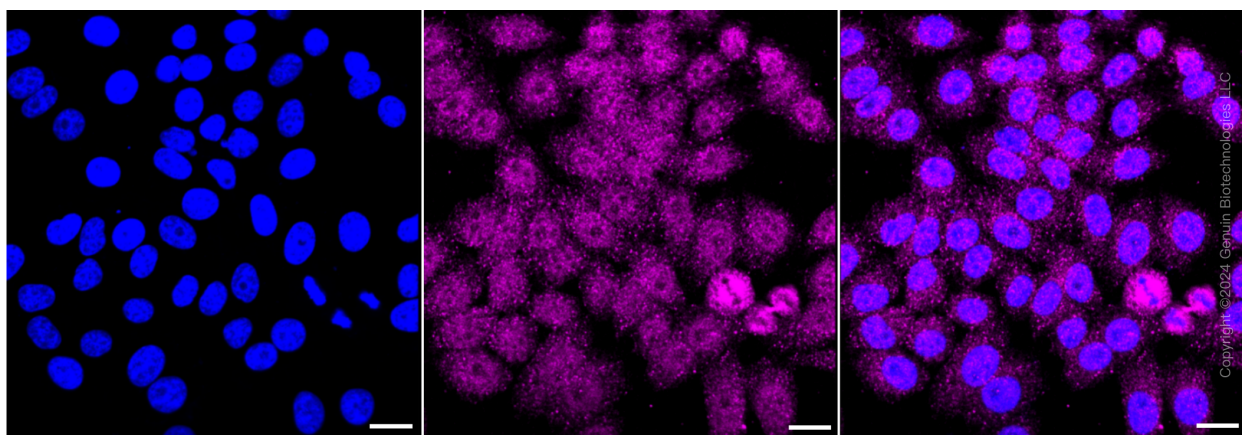
SUPPORT

SUPPORT@GENUINBIOTECH.COM
TEL: +1-540-855-7041

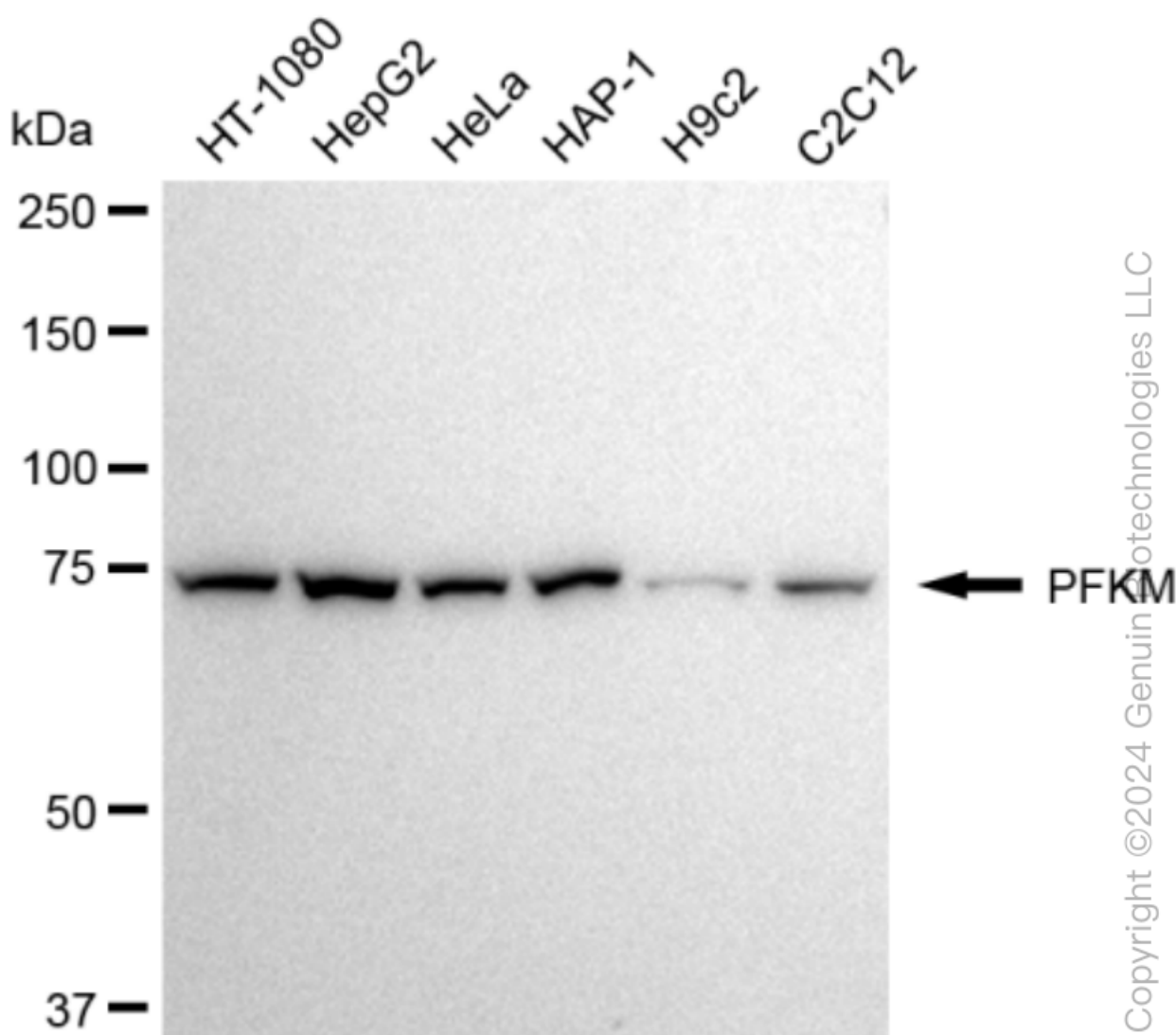
ORDERS

SALES@GENUINBIOTECH.COM
FAX: +1-540-855-7041

WWW.GENUINBIOTECH.COM



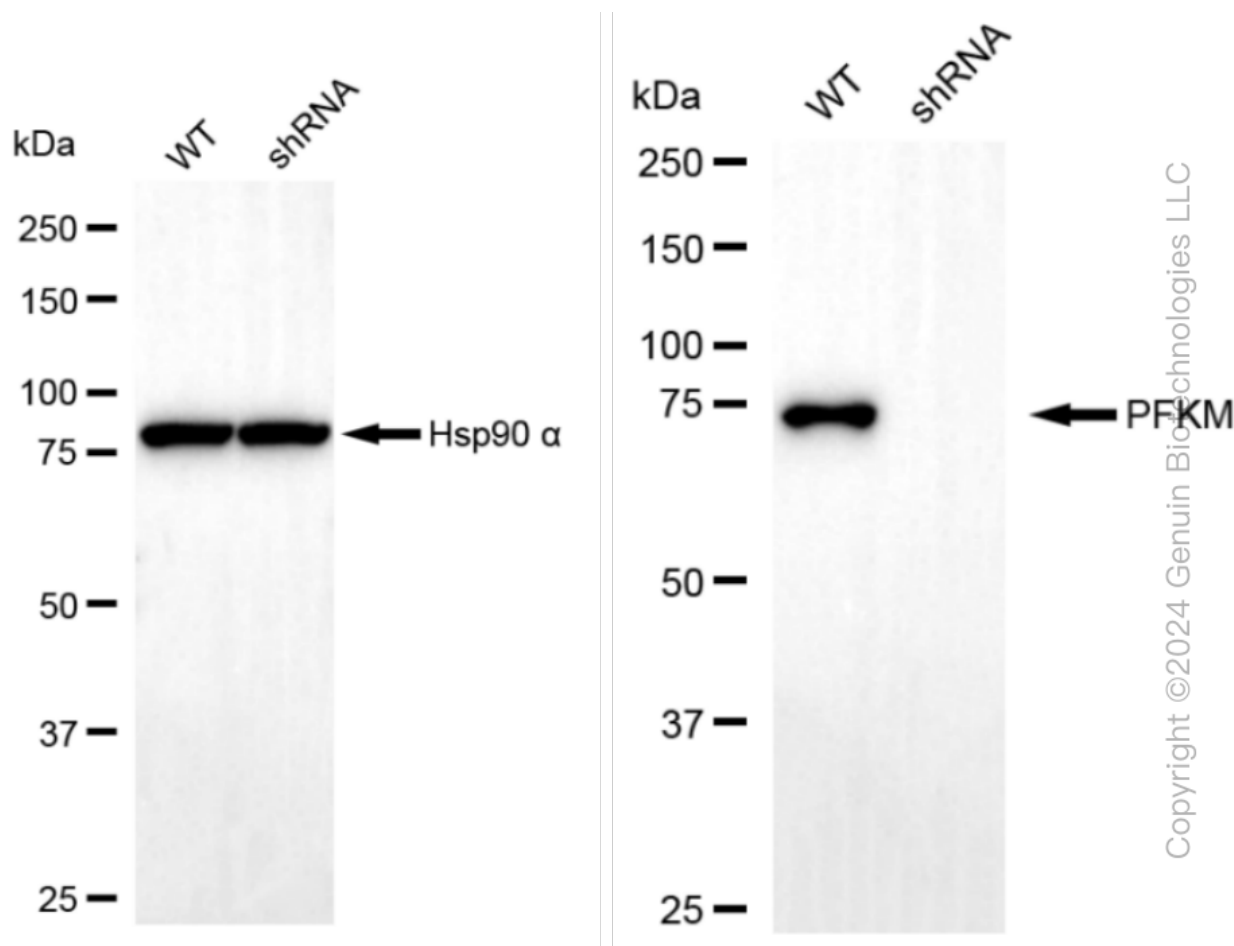
Immunocytochemical staining of HepG2 cells with PFKM antibody (Cat#61497, 1:1,000). Nuclei were stained blue with DAPI; PFKM was stained magenta with Alexa Fluor® 647. Images were taken using Leica stellaris 5. Protein abundance based on laser Intensity and smart gain: Medium. Scale bar: 20 μ m.



KD-Validated Anti-PFKM Recombinant Rabbit Monoclonal Antibody

PAGE 4

Western blotting analysis using anti-PFKM antibody (Cat#61497). Total cell lysates (30 μ g) from various cell lines were loaded and separated by SDS-PAGE. The blot was incubated with anti-PFKM antibody (Cat#61497, 1:5,000) and HRP-conjugated goat anti-rabbit secondary antibody (Cat#201, 1:20,000) respectively. Image was developed using FeQ™ ECL Substrate Kit (Cat#226).



Western blotting analysis using anti-PFKM antibody (Cat#61497). PFKM expression in wild type (WT) and PFKM shRNA knockdown (KD) HeLa cells with 30 μ g of total cell lysates. β -Tubulin serves as a loading control. The blot was incubated with anti-PFKM antibody (Cat#61497, 1:5,000) and HRP-conjugated goat anti-rabbit secondary antibody (Cat#201, 1:20,000) respectively. Image was developed using FeQ™ ECL Substrate Kit (Cat#226).

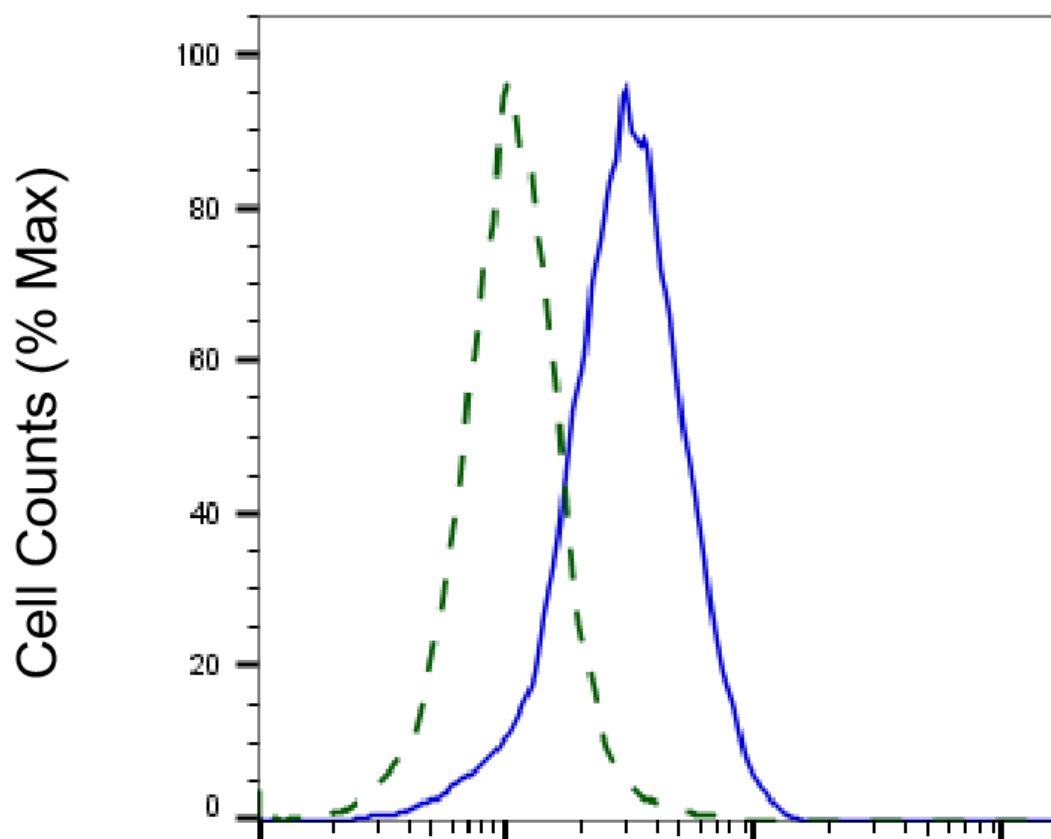
SUPPORT

SUPPORT@GENUINBIOTECH.COM
TEL: +1-540-855-7041

ORDERS

SALES@GENUINBIOTECH.COM
FAX: +1-540-855-7041

WWW.GENUINBIOTECH.COM



Copyright ©2025 Genuin Biotechnologies LLC

PFKM-Alexa Fluor® 647

Validation of PFKM knockdown using flow cytometry. Wild-type(WT, Blue) and knockdown(KD, Green) HeLa cells were stained with anti-PFKM antibody (Cat#61497, 1:2,000) and analyzed using CytoFLEX.