

# KD-Validated Anti-Phosphoglycerate kinase 1 Recombinant Rabbit Monoclonal Antibody



**Catalog #: 61498**

## Aliases

PGK1; Phosphoglycerate Kinase 1; Cell Migration-Inducing Gene 10 Protein; Primer Recognition Protein; EC 2.7.2.3; PRP; PGKA; Epididymis Secretory Sperm Binding Protein Li 68p; HEL-S-68p; MIG10

## Background

Gene Name: PGK1

NCBI Gene Entry: [5230](#)

UniProt Entry: [P00558](#)

## Application Information

Molecular Weight: Predicted, 45 kDa, observed, 45 kDa

Clonality: Rabbit monoclonal antibody

Clone ID: 23GB2430

Species Reactivity: Human, mouse, rat

Applications Tested: Western blotting (WB), flow cytometry (FCM), immunocytochemistry (IC)

## Immunogen

A synthesized peptide derived from human PGK1

## Isotype

Rabbit IgG

## Storage Buffer

Supplied in PBS (pH 7.4) containing 50% glycerol, and 0.02% sodium azide.

## Storage

Store at -20 °C for one year.

## Recommended Dilutions

Western Blotting (WB): 1:1,000-1:5,000

Flow Cytometry (FCM): 1:2,000

Immunocytochemistry (IC): 1:100-1:1,000

**Note:** This product is for research use only.

---

### SUPPORT

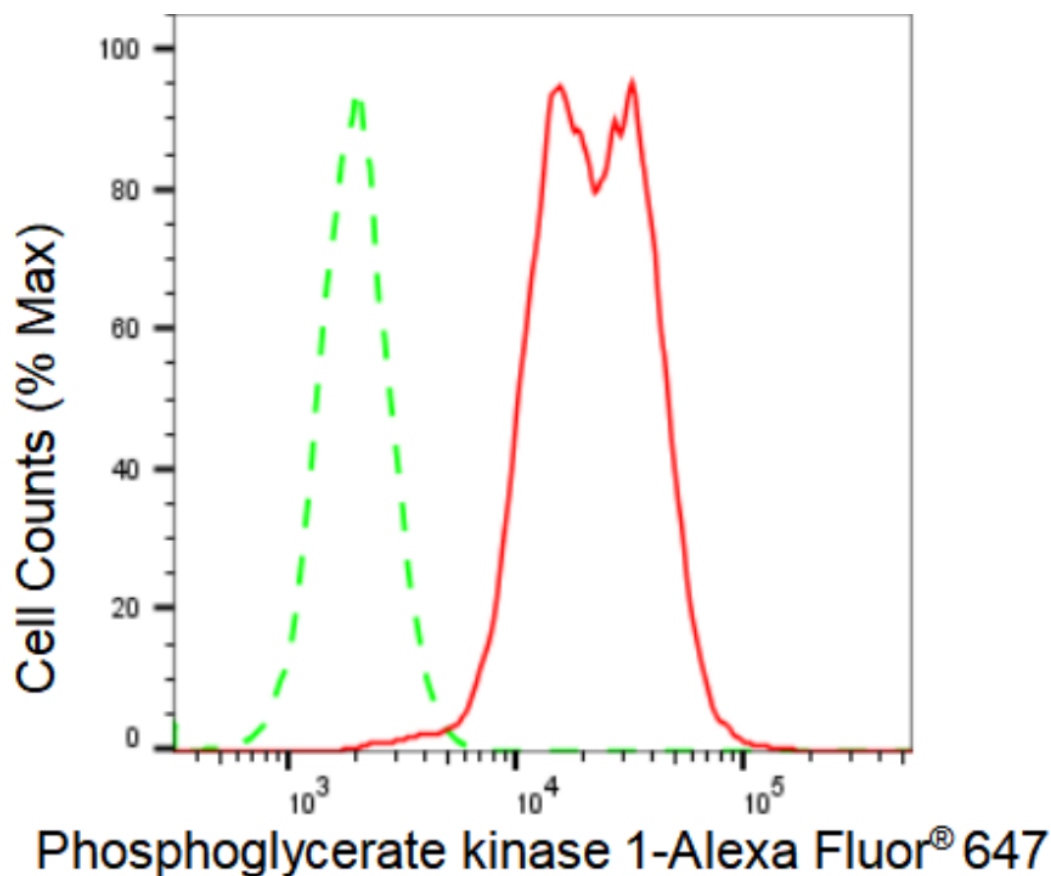
SUPPORT@GENUINBIOTECH.COM  
TEL: +1-540-855-7041

### ORDERS

SALES@GENUINBIOTECH.COM  
FAX: +1-540-855-7041

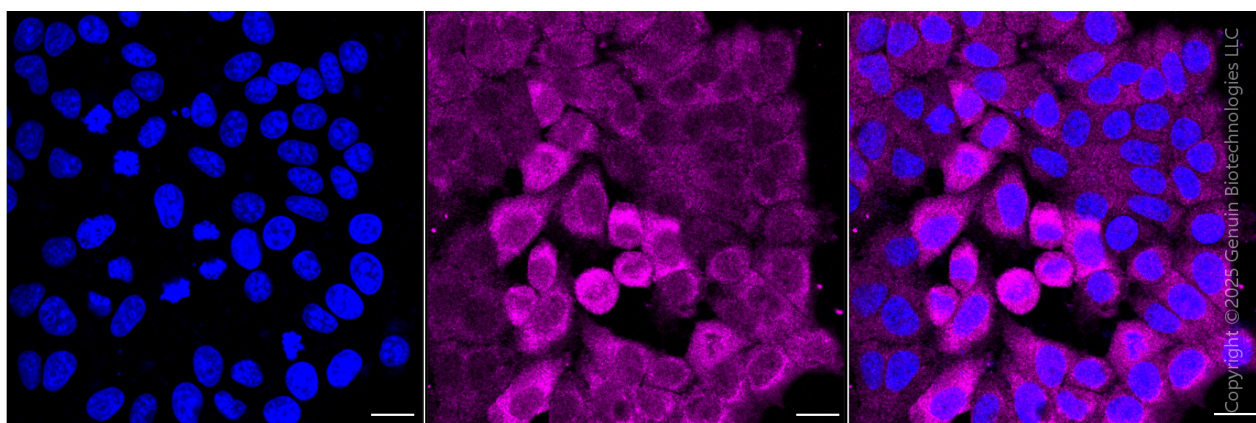
[WWW.GENUINBIOTECH.COM](http://WWW.GENUINBIOTECH.COM)

**Validation Data**



Copyright ©2024 Genuin Biotechnologies LLC

Flow cytometric analysis of Phosphoglycerate kinase 1 expression in HAP-1 cells using Phosphoglycerate kinase 1 antibody (Cat#61498, 1:2,000). Green, isotype control; red, Phosphoglycerate kinase 1.



Immunocytochemical staining of HepG2 cells with anti-phosphoglycerate kinase 1 antibody (Cat#61498, 1:1,000). Nuclei were stained blue with DAPI; Phosphoglycerate kinase 1 was stained magenta with Alexa Fluor® 647. Images were taken using Leica stellaris 5. Protein abundance based on laser Intensity and smart gain: Medium. Scale bar: 20  $\mu$ m.

**SUPPORT**

SUPPORT@GENUINBIOTECH.COM  
TEL: +1-540-855-7041

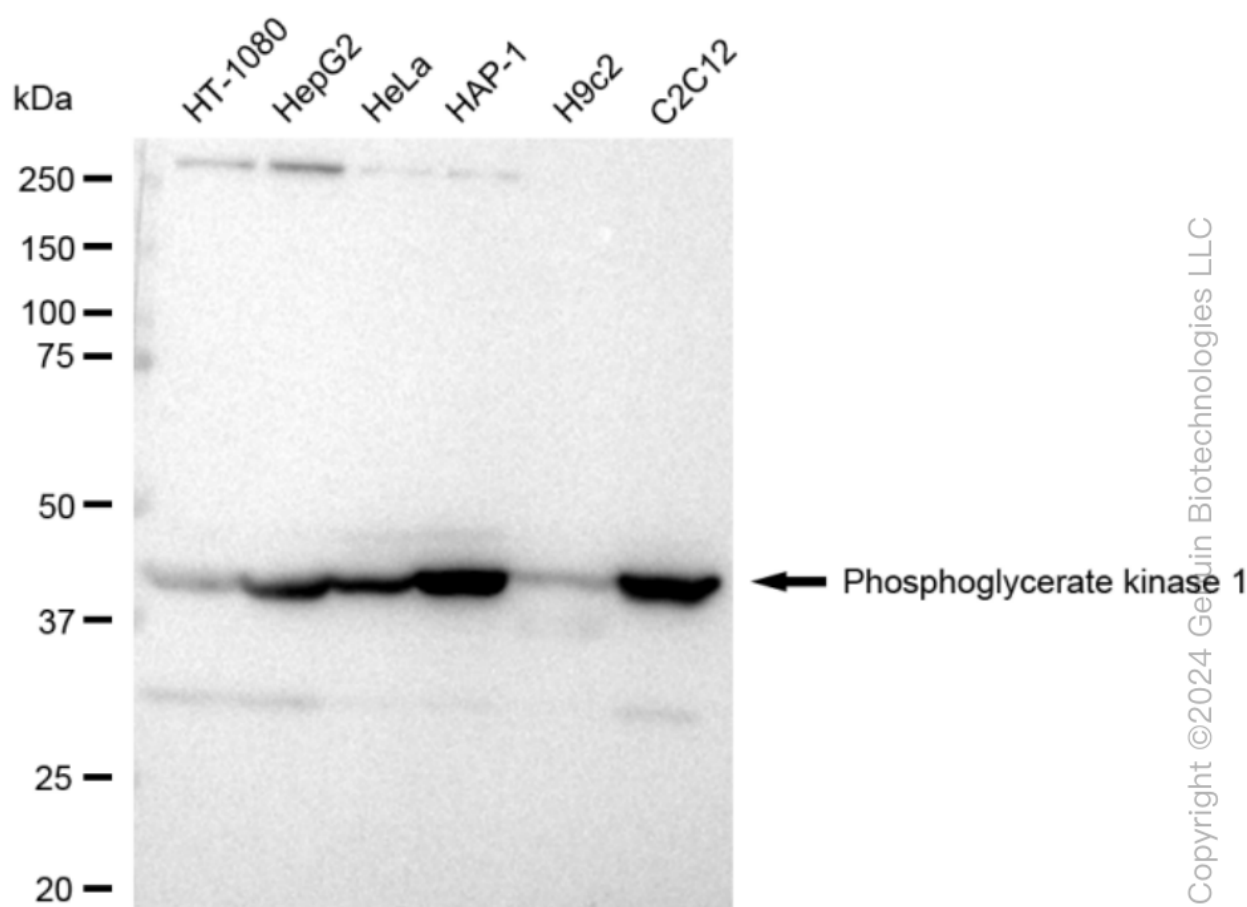
**ORDERS**

SALES@GENUINBIOTECH.COM  
FAX: +1-540-855-7041

**WWW.GENUINBIOTECH.COM**

## KD-Validated Anti-Phosphoglycerate kinase 1 Recombinant Rabbit Monoclonal Antibody

PAGE 3



Western blotting analysis using anti-Phosphoglycerate kinase 1 antibody (Cat#61498). Total cell lysates (30  $\mu$ g) from various cell lines were loaded and separated by SDS-PAGE. The blot was incubated with anti-Phosphoglycerate kinase 1 antibody (Cat#61498, 1:5,000) and HRP-conjugated goat anti-rabbit secondary antibody (Cat#201, 1:20,000) respectively. Image was developed using FeQ™ ECL Substrate Kit (Cat#226).

### SUPPORT

SUPPORT@GENUINBIOTECH.COM  
TEL: +1-540-855-7041

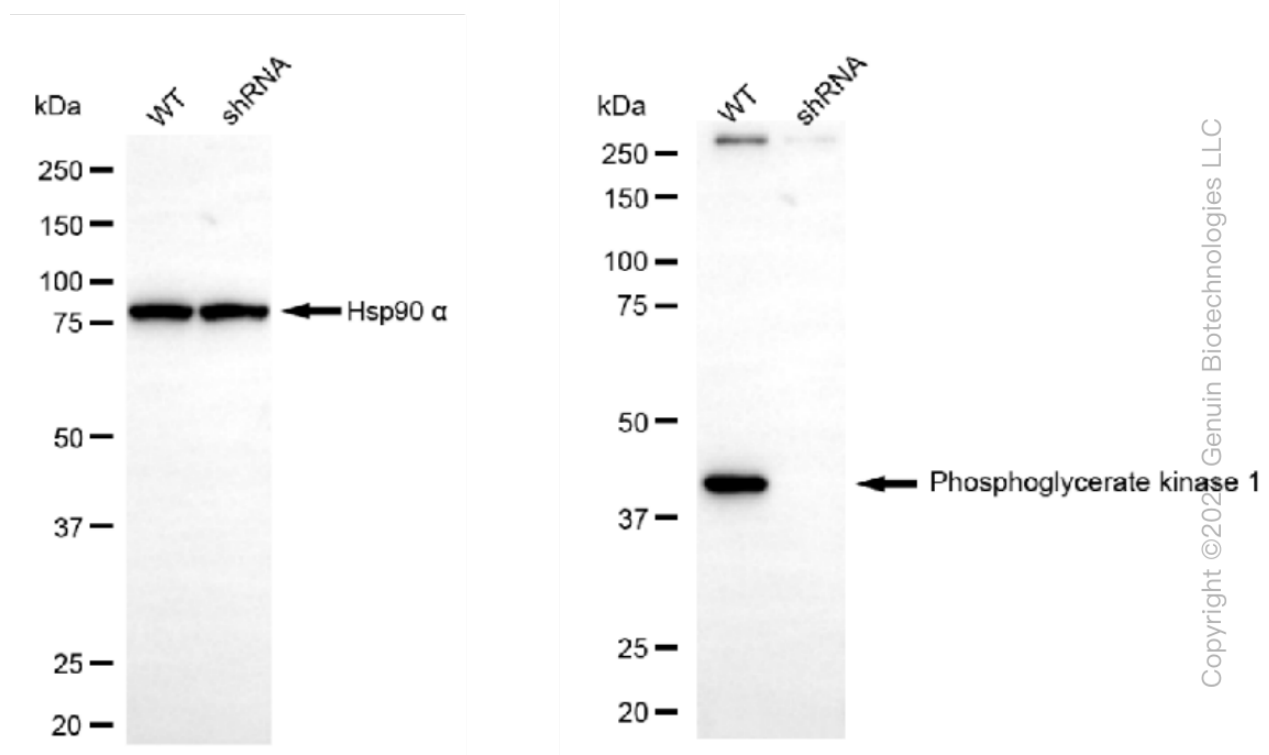
### ORDERS

SALES@GENUINBIOTECH.COM  
FAX: +1-540-855-7041

[WWW.GENUINBIOTECH.COM](http://WWW.GENUINBIOTECH.COM)

## KD-Validated Anti-Phosphoglycerate kinase 1 Recombinant Rabbit Monoclonal Antibody

PAGE 4



Western blotting analysis using anti-Phosphoglycerate kinase 1 antibody (Cat#61498). Phosphoglycerate kinase 1 expression in wild type (WT) and phosphoglycerate kinase 1 shRNA knockdown (KD) HeLa cells with 30 µg of total cell lysates. Hsp90 α serves as a loading control. The blot was incubated with anti-Phosphoglycerate kinase 1 antibody (Cat#61498, 1:5,000) and HRP-conjugated goat anti-rabbit secondary antibody (Cat#201, 1:20,000) respectively. Image was developed using FeQ™ ECL Substrate Kit (Cat#226).

### SUPPORT

SUPPORT@GENUINBIOTECH.COM  
TEL: +1-540-855-7041

### ORDERS

SALES@GENUINBIOTECH.COM  
FAX: +1-540-855-7041

[WWW.GENUINBIOTECH.COM](http://WWW.GENUINBIOTECH.COM)