

# KD-Validated Anti-Phospholipase A2 activating protein Recombinant Rabbit Monoclonal



**Catalog #: 61499**

## Aliases

PLAA; Phospholipase A2 Activating Protein; PLA2P; PLAP; DOA1; Phospholipase A-2-Activating Protein; FLJ11281; FLJ12699; DOA1 Homolog (S. Cerevisiae); DOA1 Homolog; NDMSBA

## Background

Gene Name: PLAA

NCBI Gene Entry: [9373](#)

UniProt Entry: [Q9Y263](#)

## Application Information

Molecular Weight: Predicted, 87 kDa, observed, 75 kDa

Clonality: Rabbit monoclonal antibody

Clone ID: 23GB2560

Species Reactivity: Human

Applications Tested: Western blotting (WB), flow cytometry (FCM), immunocytochemistry (IC)

## Immunogen

A synthesized peptide derived from human PLAP

## Isotype

Rabbit IgG

## Storage Buffer

Supplied in PBS (pH 7.4) containing 50% glycerol, and 0.02% sodium azide.

## Storage

Store at -20 °C for one year.

## Recommended Dilutions

Western Blotting (WB): 1:1,000-1:5,000

Flow Cytometry (FCM): 1:2,000

Immunocytochemistry (IC): 1:100-1:1,000

**Note:** This product is for research use only.

---

### SUPPORT

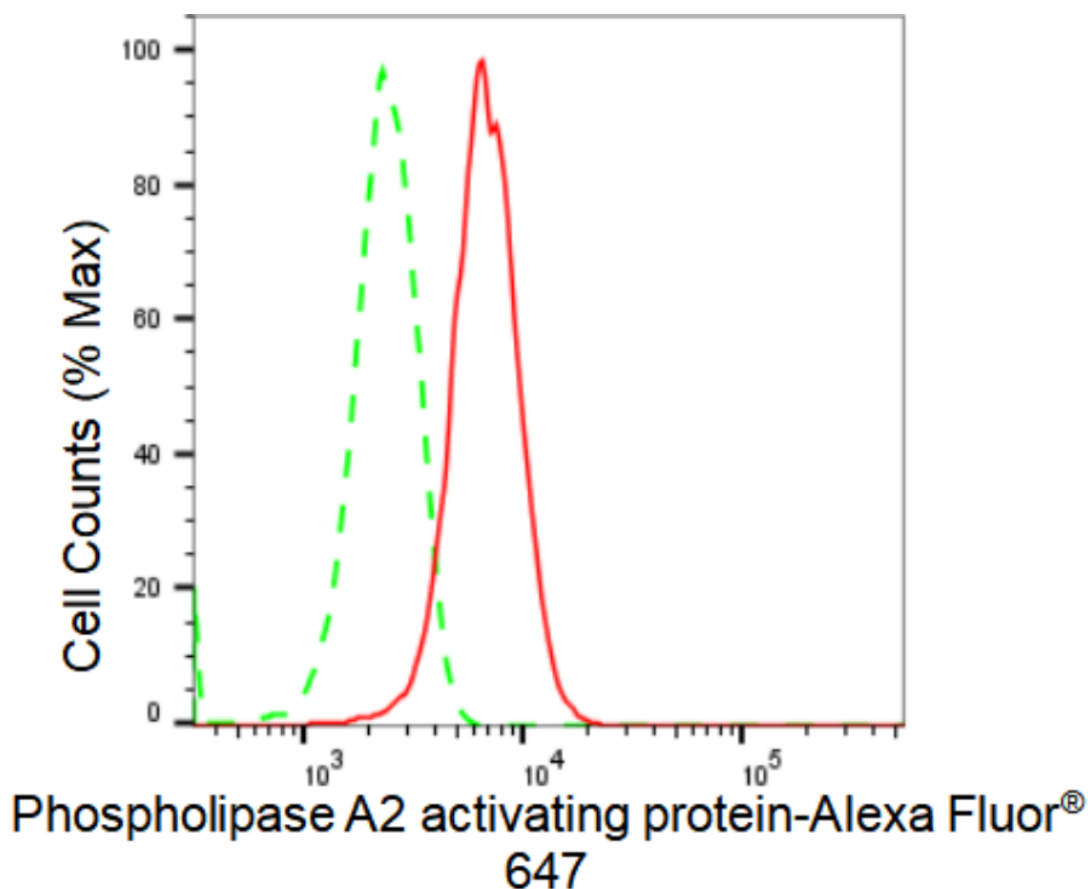
SUPPORT@GENUINBIOTECH.COM  
TEL: +1-540-855-7041

### ORDERS

SALES@GENUINBIOTECH.COM  
FAX: +1-540-855-7041

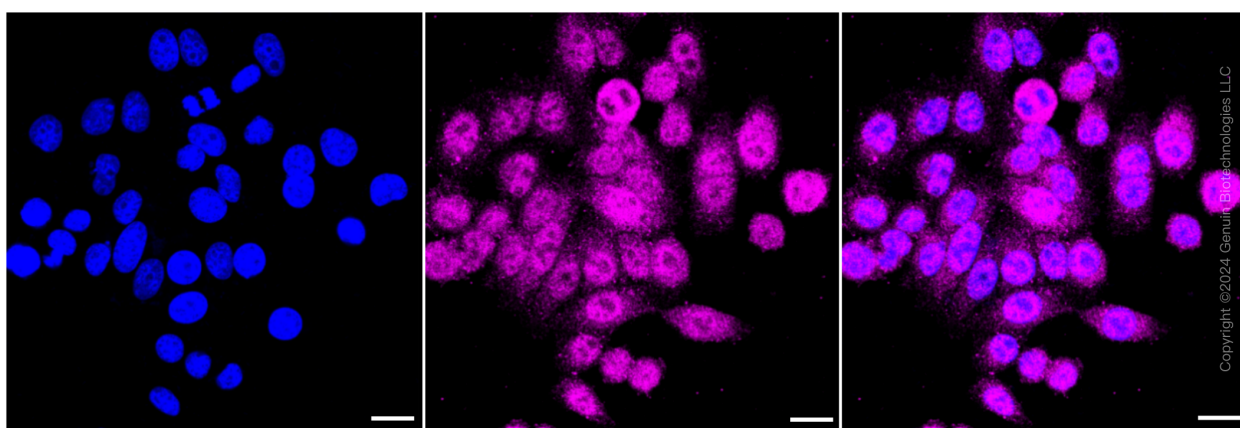
[WWW.GENUINBIOTECH.COM](http://WWW.GENUINBIOTECH.COM)

**Validation Data**



Copyright ©2024 Genuin Biotechnologies LLC

Flow cytometric analysis of Phospholipase A2 activating protein expression in HepG2 cells using Phospholipase A2 activating protein antibody (Cat#61499, 1:2,000). Green, isotype control; red, Phospholipase A2 activating protein.



Immunocytochemical staining of HepG2 cells with Phospholipase A2 activating protein antibody (Cat#61499, 1:1,000). Nuclei were stained blue with DAPI; Phospholipase A2 activating protein was stained magenta with Alexa Fluor® 647. Images were taken using Leica stellaris 5. Protein abundance based on laser Intensity and smart gain: Medium. Scale bar: 20 µm.

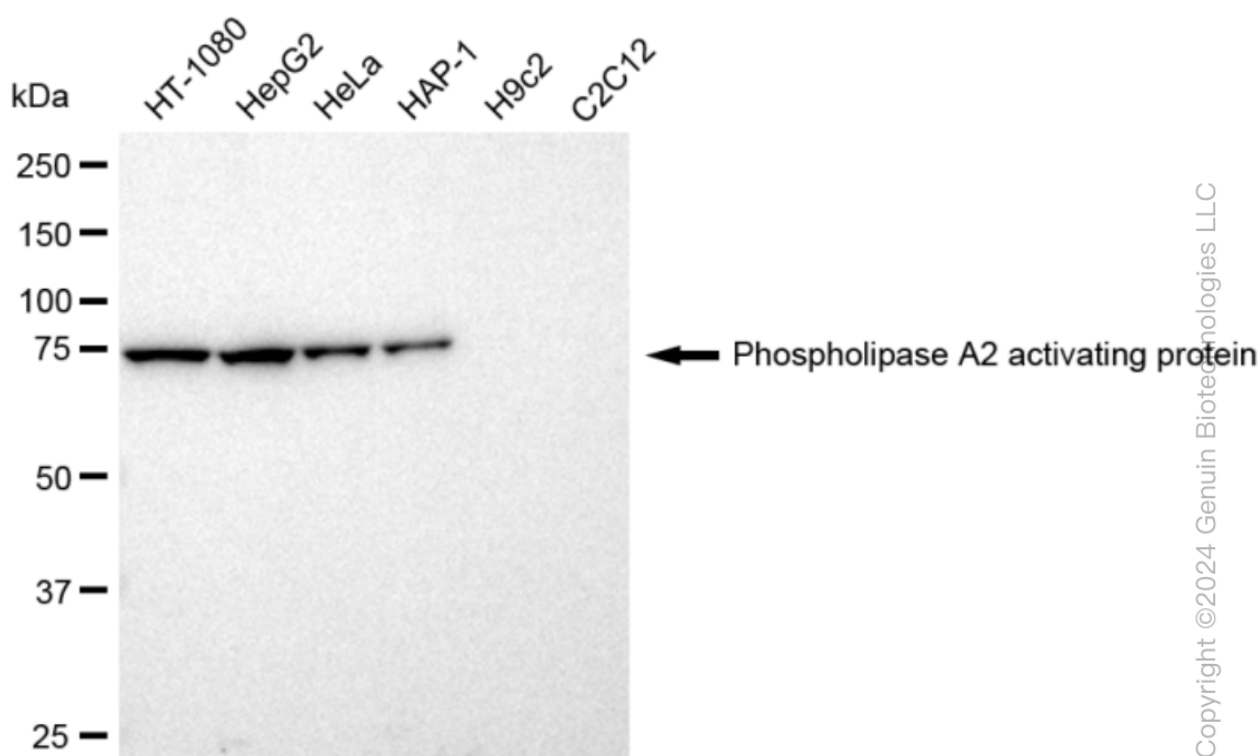
**SUPPORT**

SUPPORT@GENUINBIOTECH.COM  
TEL: +1-540-855-7041

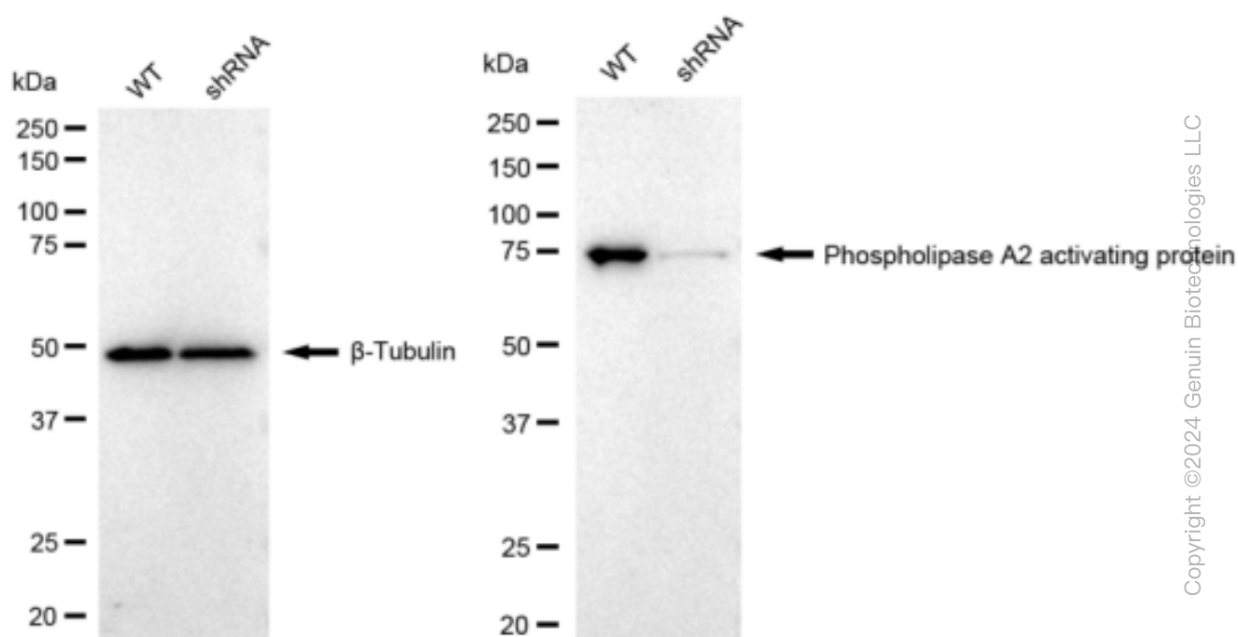
**ORDERS**

SALES@GENUINBIOTECH.COM  
FAX: +1-540-855-7041

**WWW.GENUINBIOTECH.COM**



Western blotting analysis using anti-Phospholipase A2 activating protein antibody (Cat#61499). Total cell lysates (30 µg) from various cell lines were loaded and separated by SDS-PAGE. The blot was incubated with anti-Phospholipase A2 activating protein antibody (Cat#61499, 1:5,000) and HRP-conjugated goat anti-rabbit secondary antibody (Cat#201, 1:20,000) respectively. Image was developed using FeQ™ ECL Substrate Kit (Cat#226).

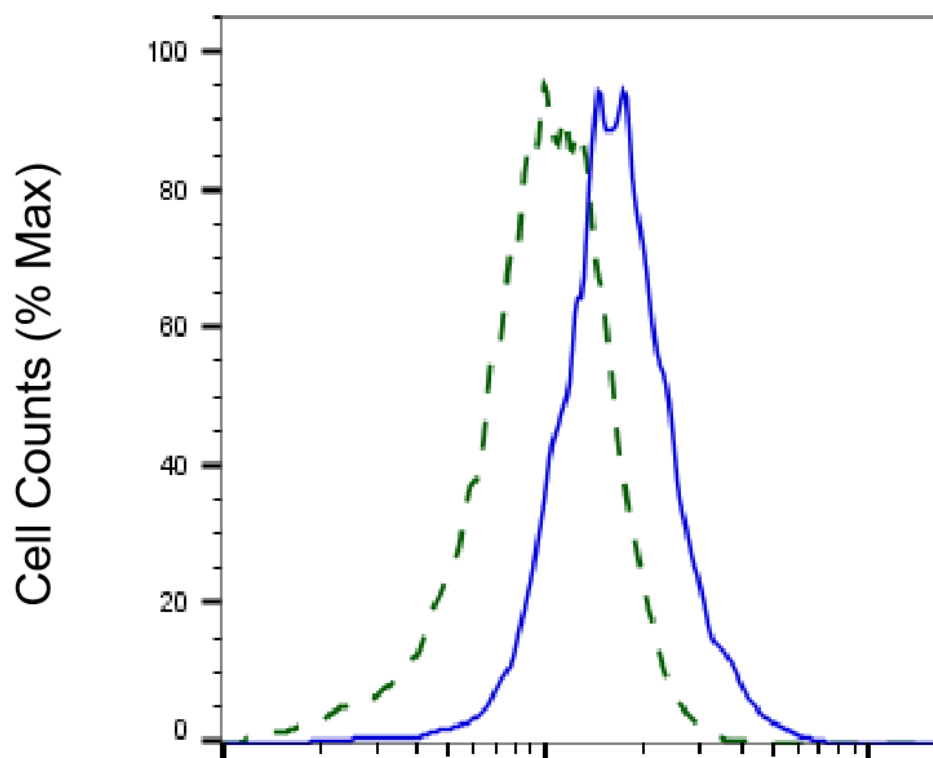


Western blotting analysis using anti-Phospholipase A2 activating protein antibody (Cat#61499).

## KD-Validated Anti-Phospholipase A2 activating protein Recombinant Rabbit Monoclonal

PAGE 4

Phospholipase A2 activating protein expression in wild type (WT) and phospholipase A2 activating protein shRNA knockdown (KD) HeLa cells with 30 µg of total cell lysates. β-Tubulin serves as a loading control. The blot was incubated with anti-Phospholipase A2 activating protein antibody (Cat#61499, 1:5000) and HRP-conjugated goat anti-rabbit secondary antibody (Cat#201, 1:20000) respectively. Image was developed using FeQ™ ECL Substrate Kit (Cat#226).



Copyright ©2025 Genuin Biotechnologies LLC

### Phospholipase A2 activating protein-Alexa Fluor® 647

Validation of Phospholipase A2 activating protein knockdown using flow cytometry. Wild-type(WT, Blue) and knockdown(KD, Green) HeLa cells were stained with anti-Phospholipase A2 activating protein antibody (Cat#61499, 1:2,000) and analyzed using BD flow cytometer.

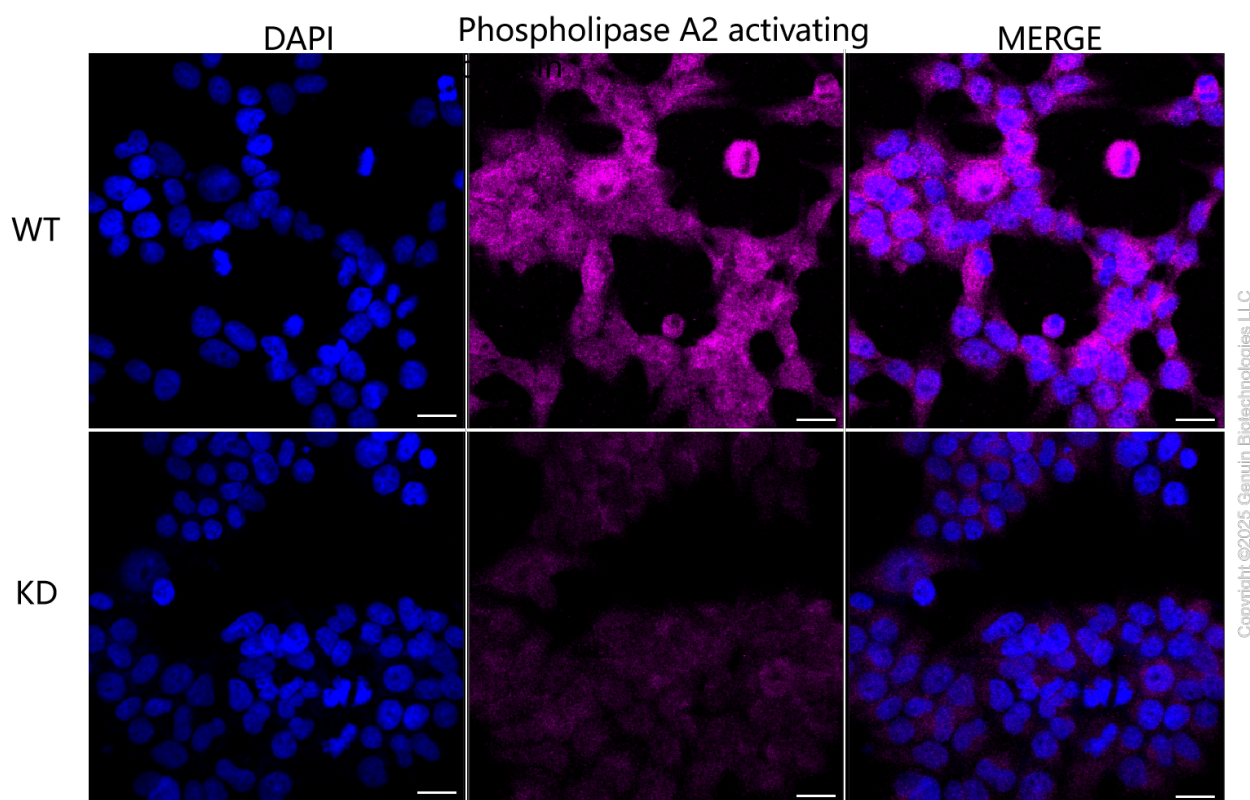
#### SUPPORT

SUPPORT@GENUINBIOTECH.COM  
TEL: +1-540-855-7041

#### ORDERS

SALES@GENUINBIOTECH.COM  
FAX: +1-540-855-7041

WWW.GENUINBIOTECH.COM



Immunocytochemical staining of HeLa cells using anti-Phospholipase A2 activating protein antibody (Cat#61499, 1:1,000), Top panel: wild-type (WT); Bottom panel: Phospholipase A2 activating protein shRNA knockdown (KD). Nuclei were stained blue with DAPI; Phospholipase A2 activating protein was stained magenta with Alexa Fluor® 647. Scale bar, 20  $\mu$ m.