

KD-Validated Anti-PPM1G Recombinant Rabbit Monoclonal Antibody



Catalog #: 61501

Aliases

PPM1G; Protein Phosphatase, Mg²⁺/Mn²⁺ Dependent 1G; PP2CG; Protein Phosphatase Magnesium-Dependent 1 Gamma; Protein Phosphatase 1G ; Protein Phosphatase 1C; EC 3.1.3.16; PP2C-Gamma; PP2CGAMMA; Protein Phosphatase 1G (Formerly 2C), Magnesium-Dependent, Gamma Isoform; Protein Phosphatase, Mg²⁺/Mn²⁺ Dependent, 1G; Protein Phosphatase 2C, Gamma Isoform; Protein Phosphatase 2C Isoform Gamma; PP2C, Gamma; PP2Cgamma; PPP2CG; PPM1C

Background

Gene Name: PPM1G

NCBI Gene Entry: [5496](#)

UniProt Entry: [O15355](#)

Application Information

Molecular Weight: Predicted, 59 kDa, observed, 72 kDa

Clonality: Rabbit monoclonal antibody

Clone ID: 23GB2585

Species Reactivity: Human, mouse, rat

Applications Tested: Western blotting (WB), flow cytometry (FCM), immunocytochemistry (IC)

Immunogen

A synthesized peptide derived from human PPM1G

Isotype

Rabbit IgG

Storage Buffer

Supplied in PBS (pH 7.4) containing 50% glycerol, and 0.02% sodium azide.

Storage

Store at -20 °C for one year.

Recommended Dilutions

Western Blotting (WB): 1:1,000-1:5,000

Flow Cytometry (FCM): 1:2,000

Immunocytochemistry (IC): 1:100-1:1,000

SUPPORT

SUPPORT@GENUINBIOTECH.COM
TEL: +1-540-855-7041

ORDERS

SALES@GENUINBIOTECH.COM
FAX: +1-540-855-7041

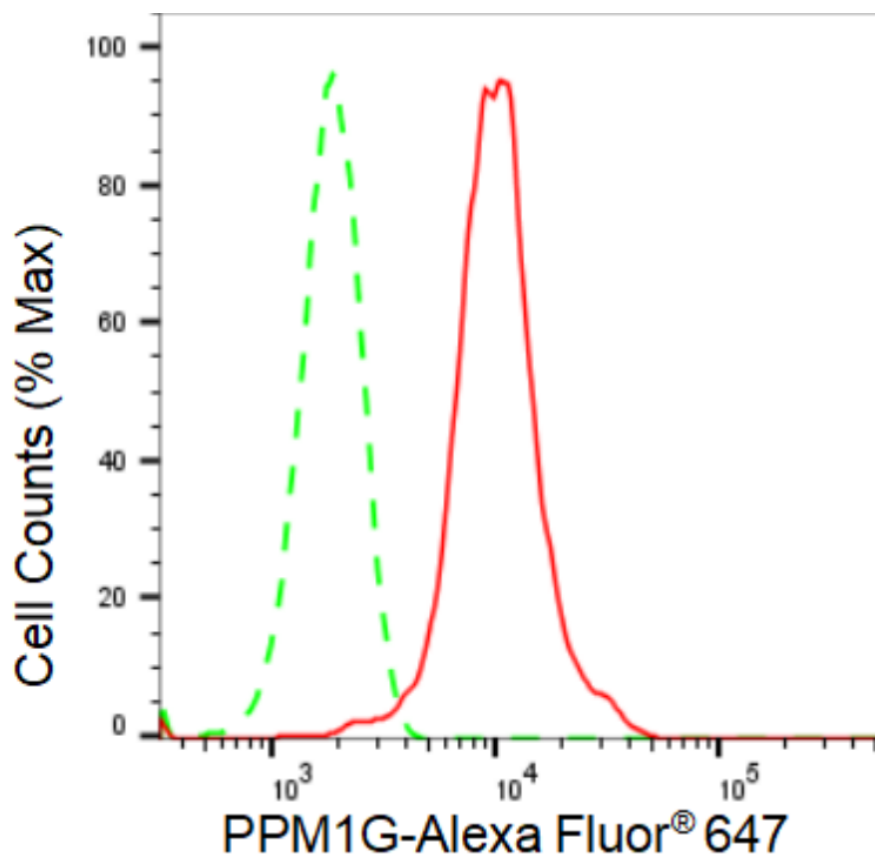
WWW.GENUINBIOTECH.COM

KD-Validated Anti-PPM1G Recombinant Rabbit Monoclonal Antibody

PAGE 2

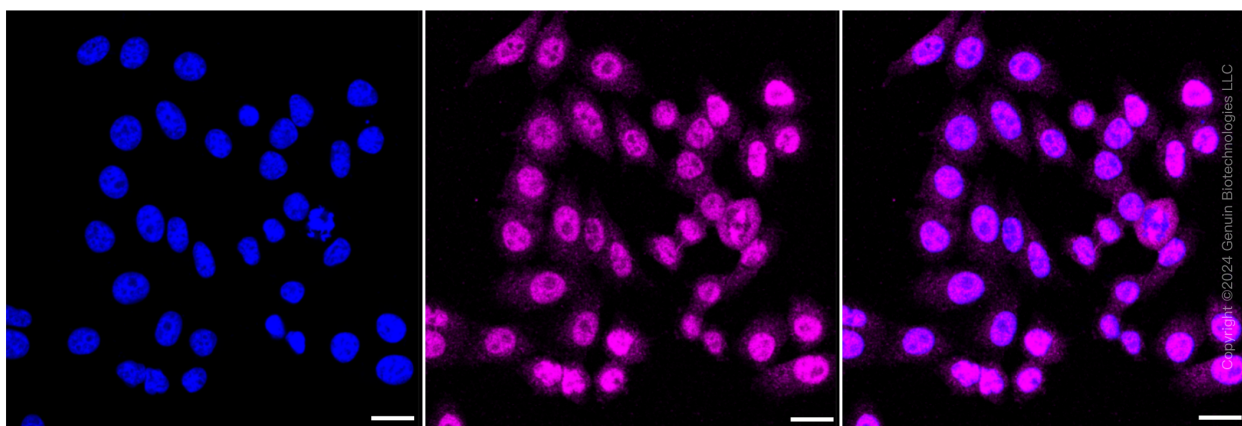
Note: This product is for research use only.

Validation Data



Copyright ©2024 Genuin Biotechnologies LLC

Flow cytometric analysis of PPM1G expression in HepG2 cells using PPM1G antibody (Cat#61501, 1:2,000). Green, isotype control; red, PPM1G.



Copyright ©2024 Genuin Biotechnologies LLC

SUPPORT

SUPPORT@GENUINBIOTECH.COM
TEL: +1-540-855-7041

ORDERS

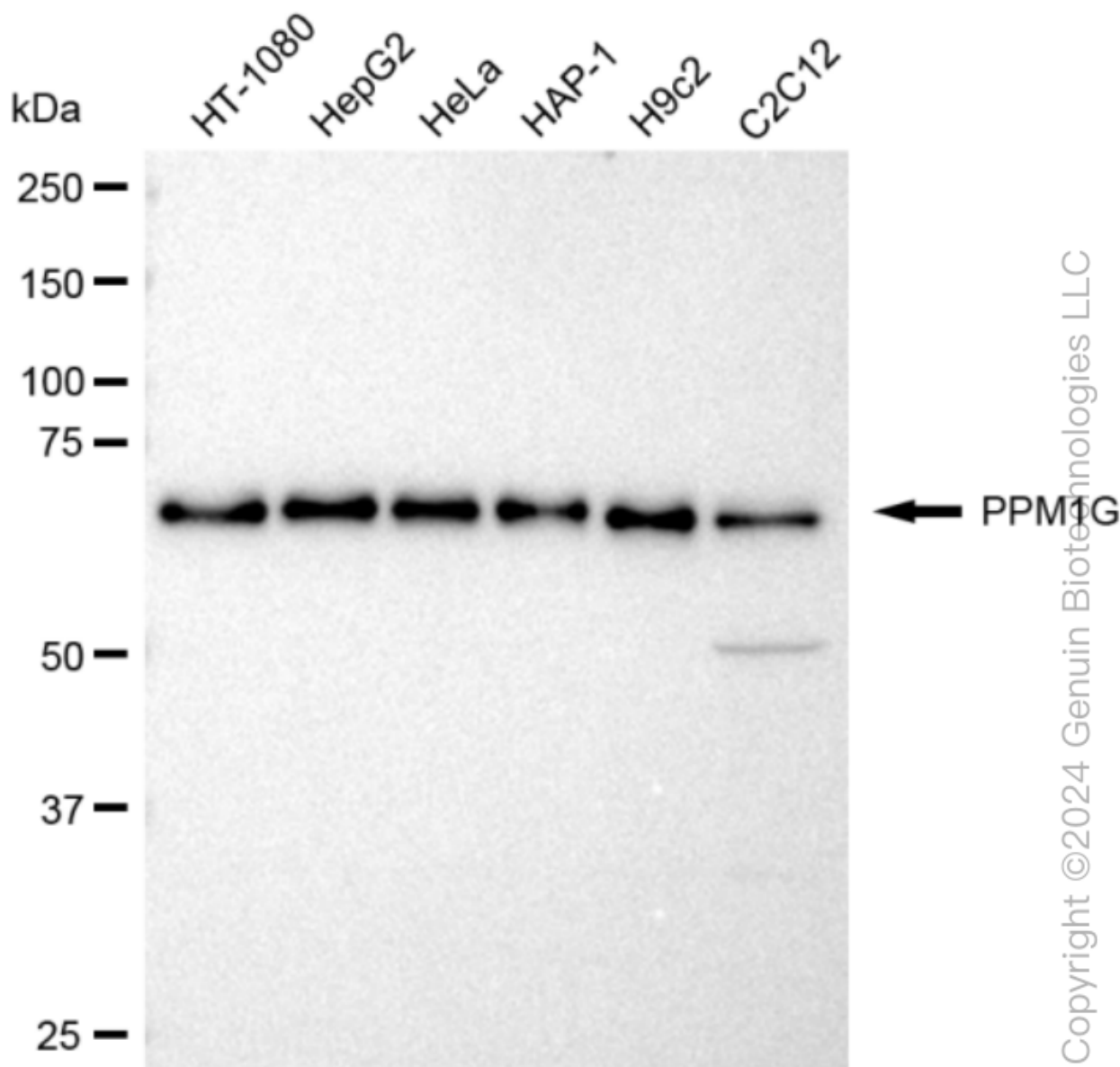
SALES@GENUINBIOTECH.COM
FAX: +1-540-855-7041

WWW.GENUINBIOTECH.COM

KD-Validated Anti-PPM1G Recombinant Rabbit Monoclonal Antibody

PAGE 3

gain: High. Scale bar: 20 μ m.



Western blotting analysis using anti-PPM1G antibody (Cat#61501). Total cell lysates (30 μ g) from various cell lines were loaded and separated by SDS-PAGE. The blot was incubated with anti-PPM1G antibody (Cat#61501, 1:5,000) and HRP-conjugated goat anti-rabbit secondary antibody (Cat#201, 1:20,000) respectively. Image was developed using FeQTM ECL Substrate Kit (Cat#226).

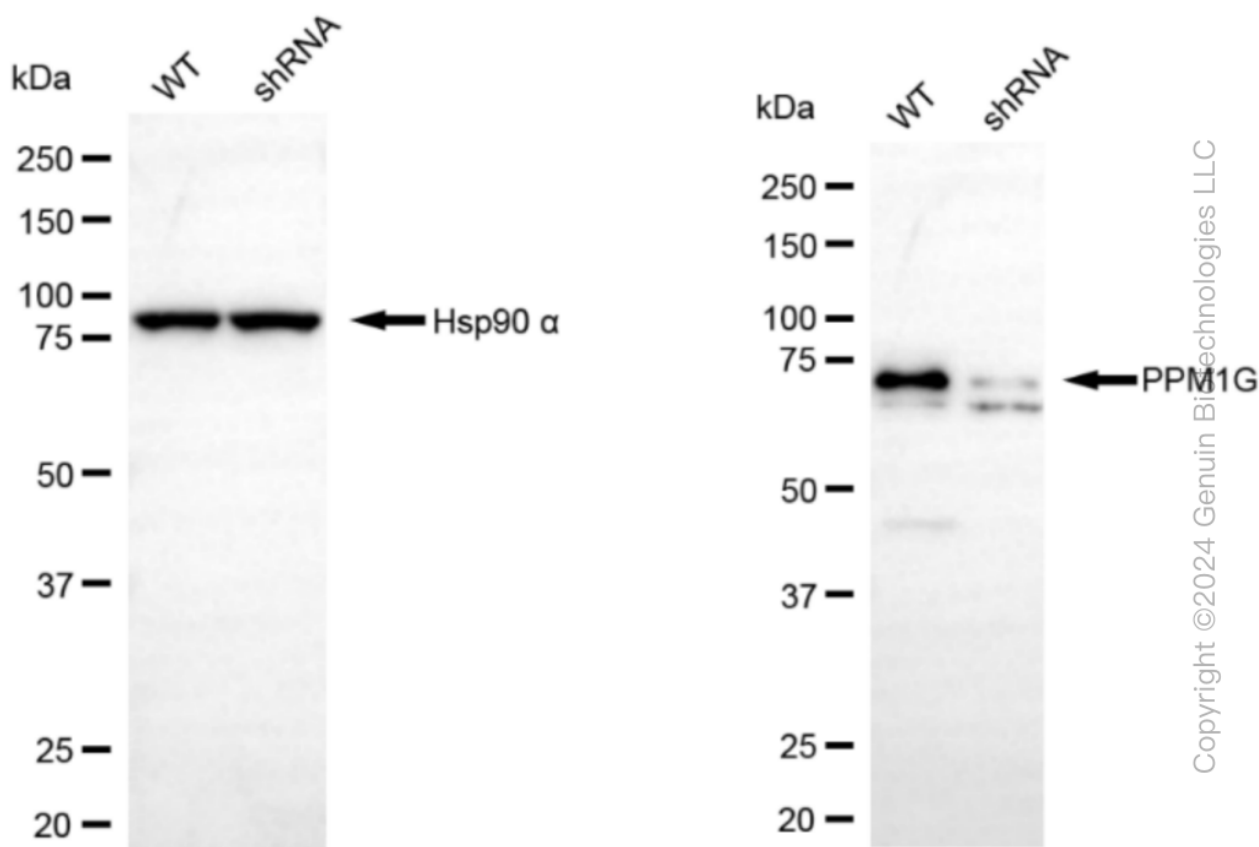
SUPPORT

SUPPORT@GENUINBIOTECH.COM
TEL: +1-540-855-7041

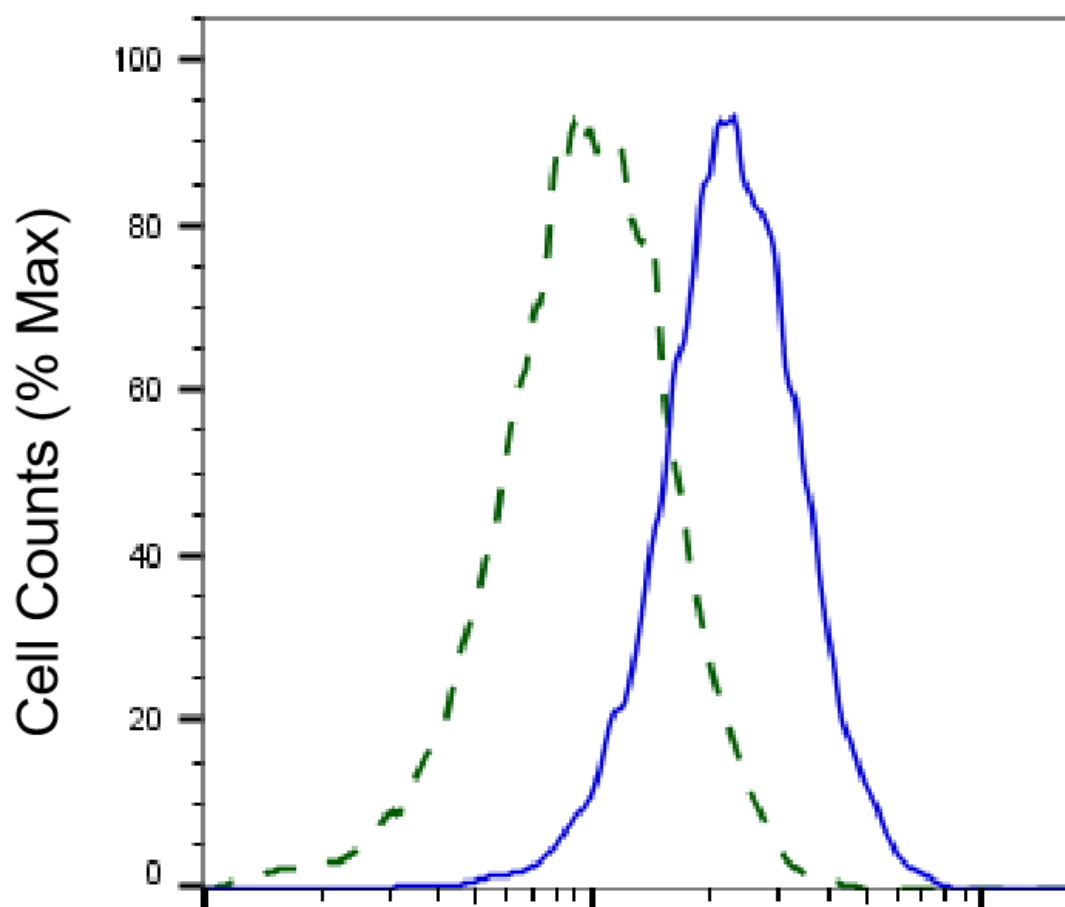
ORDERS

SALES@GENUINBIOTECH.COM
FAX: +1-540-855-7041

WWW.GENUINBIOTECH.COM



Western blotting analysis using anti-PPM1G antibody (Cat#61501). PPM1G expression in wild type (WT) and PPM1G shRNA knockdown (KD) HeLa cells with 30 μ g of total cell lysates. β -Tubulin serves as a loading control. The blot was incubated with anti-PPM1G antibody (Cat#61501, 1:5000) and HRP-conjugated goat anti-rabbit secondary antibody (Cat#201, 1:20000) respectively. Image was developed using FeQ™ ECL Substrate Kit (Cat#226).



Copyright ©2025 Genuin Biotechnologies LLC

PPM1G-Alexa Fluor® 647

Validation of PPM1G knockdown using flow cytometry. Wild-type(WT, Blue) and knockdown(KD, Green) HeLa cells were stained with anti-PPM1G antibody (Cat#61501, 1:2,000) and analyzed using BD flow cytometer.