

KD-Validated Anti-Protein arginine methyltransferase 7 Recombinant Rabbit



Catalog #: 61505

Aliases

PRMT7; Protein Arginine Methyltransferase 7; KIAA1933; [Myelin Basic Protein]-Arginine N-Methyltransferase PRMT7; Histone-Arginine N-Methyltransferase PRMT7; Protein Arginine N-Methyltransferase 7; FLJ10640; EC 2.1.1.321; EC 2.1.1 48; SBIDDS

Background

Gene Name: PRMT7

NCBI Gene Entry: [54496](#)

UniProt Entry: [Q9NVM4](#)

Application Information

Molecular Weight: Predicted, 78 kDa, observed, 75 kDa

Clonality: Rabbit monoclonal antibody

Clone ID: 23GB2380

Species Reactivity: Human, mouse, rat

Applications Tested: Western blotting (WB), flow cytometry (FCM), immunocytochemistry (IC)

Immunogen

A synthesized peptide derived from human PRMT7

Isotype

Rabbit IgG

Storage Buffer

Supplied in PBS (pH 7.4) containing 50% glycerol, and 0.02% sodium azide.

Storage

Store at -20 °C for one year.

Recommended Dilutions

Western Blotting (WB): 1:1,000-1:5,000

Flow Cytometry (FCM): 1:2,000

Immunocytochemistry (IC): 1:100-1:1,000

Note: This product is for research use only.

SUPPORT

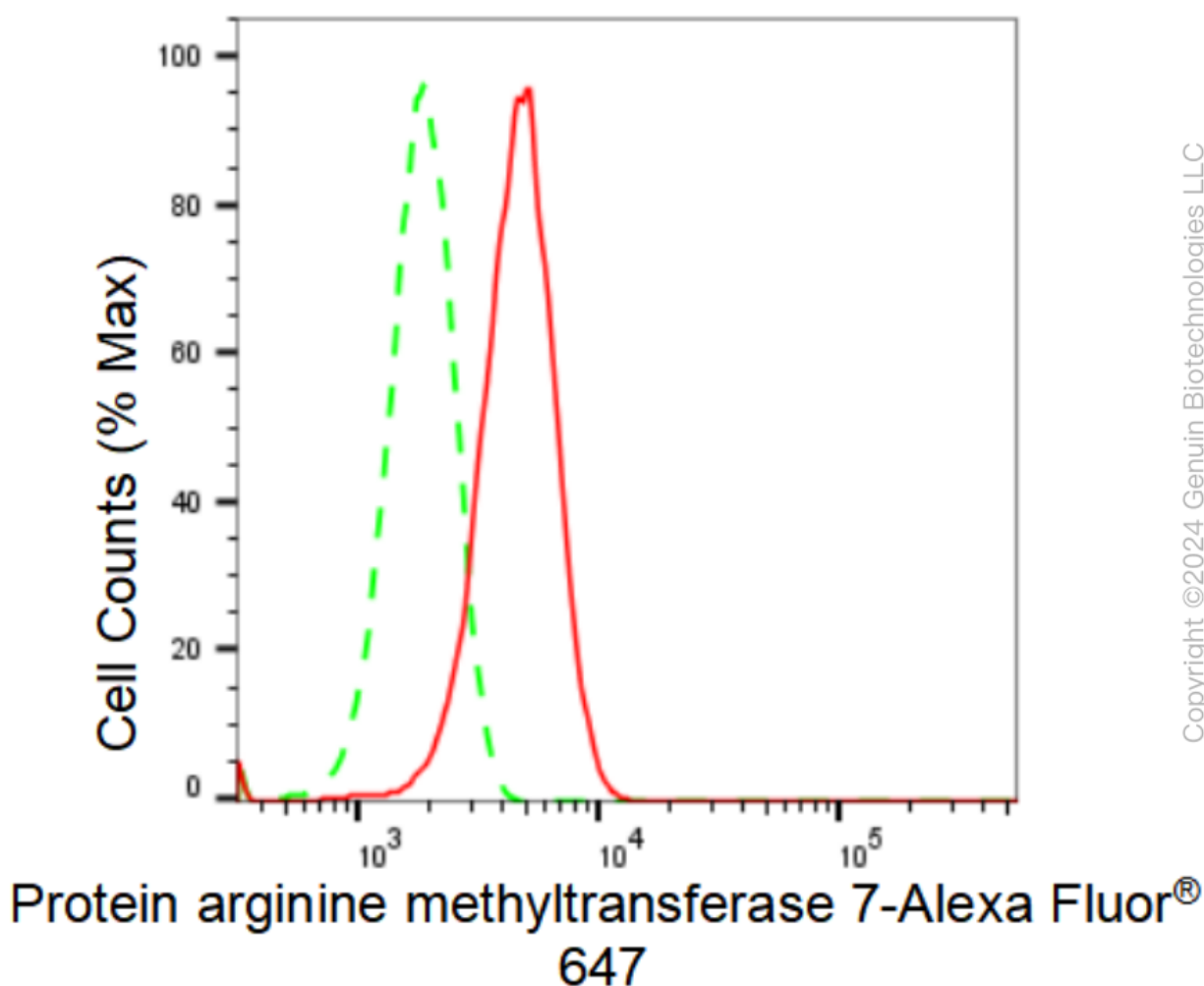
SUPPORT@GENUINBIOTECH.COM
TEL: +1-540-855-7041

ORDERS

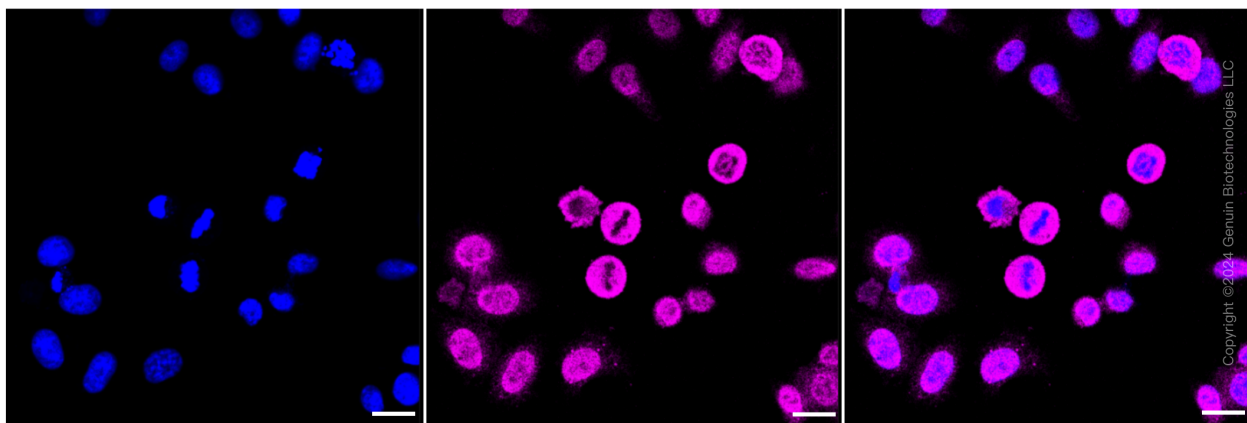
SALES@GENUINBIOTECH.COM
FAX: +1-540-855-7041

WWW.GENUINBIOTECH.COM

Validation Data



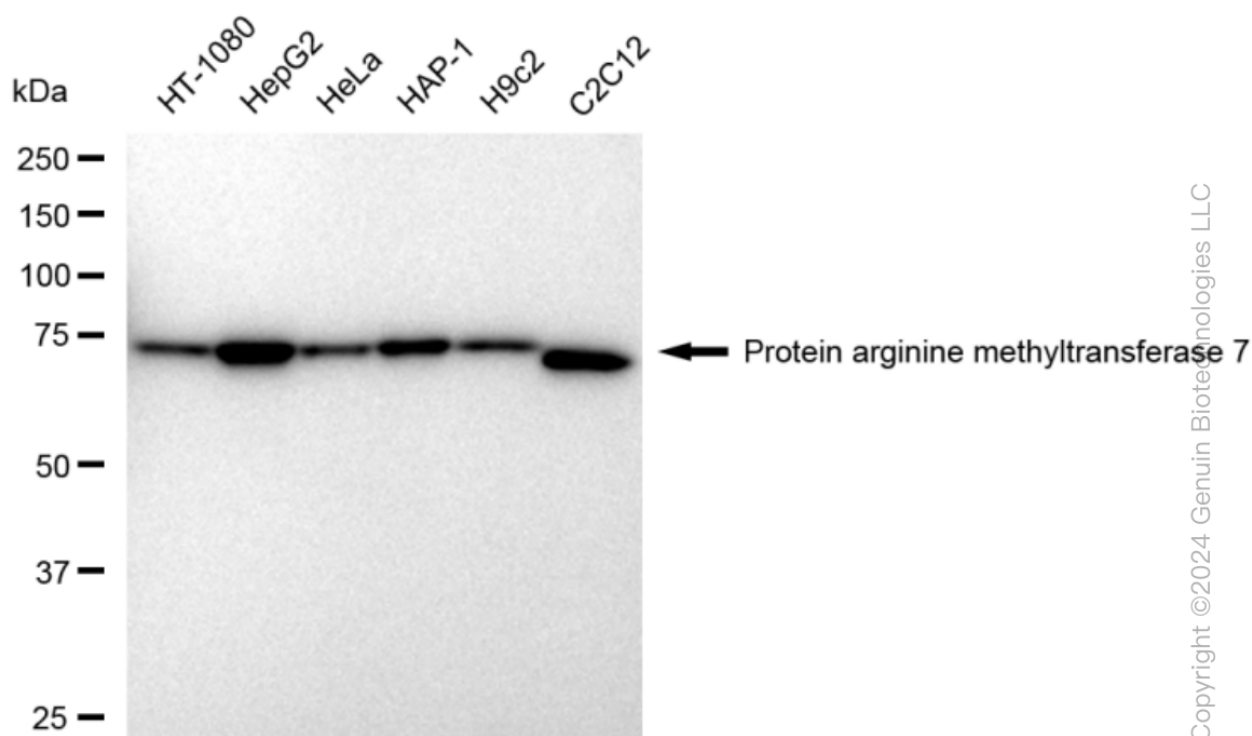
Flow cytometric analysis of Protein arginine methyltransferase 7 expression in HepG2 cells using Protein arginine methyltransferase 7 antibody (Cat#61505, 1:2,000). Green, isotype control; red, Protein arginine methyltransferase 7.



KD-Validated Anti-Protein arginine methyltransferase 7 Recombinant Rabbit

PAGE 3

Immunocytochemical staining of HepG2 cells with Protein arginine methyltransferase 7 antibody (Cat#61505, 1:1,000). Nuclei were stained blue with DAPI; Protein arginine methyltransferase 7 was stained magenta with Alexa Fluor® 647. Images were taken using Leica stellaris 5. Protein abundance based on laser Intensity and smart gain: Medium. Scale bar: 20 μ m.



Western blotting analysis using anti-Protein arginine methyltransferase 7 antibody (Cat#61505). Total cell lysates (30 μ g) from various cell lines were loaded and separated by SDS-PAGE. The blot was incubated with anti-Protein arginine methyltransferase 7 antibody (Cat#61505, 1:5,000) and HRP-conjugated goat anti-rabbit secondary antibody (Cat#201, 1:20,000) respectively. Image was developed using FeQ™ ECL Substrate Kit (Cat#226).

SUPPORT

SUPPORT@GENUINBIOTECH.COM
TEL: +1-540-855-7041

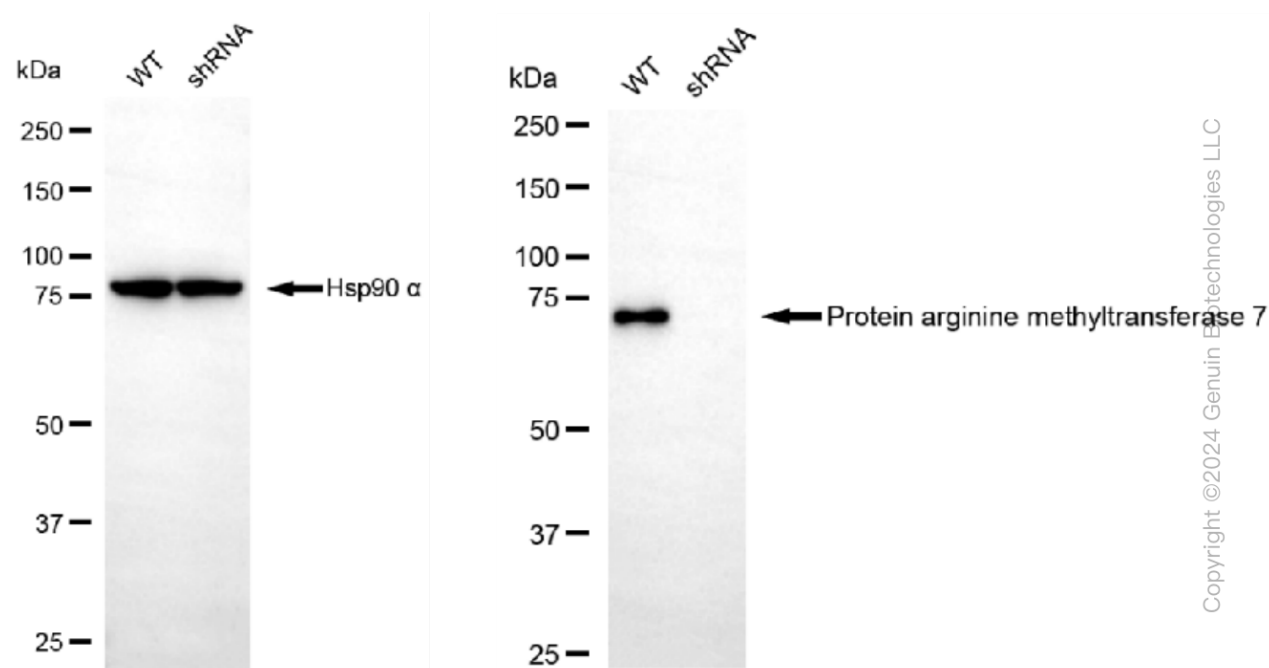
ORDERS

SALES@GENUINBIOTECH.COM
FAX: +1-540-855-7041

WWW.GENUINBIOTECH.COM

KD-Validated Anti-Protein arginine methyltransferase 7 Recombinant Rabbit

PAGE 4



Western blotting analysis using anti-Protein arginine methyltransferase 7 antibody (Cat#61505). Protein arginine methyltransferase 7 expression in wild type (WT) and protein arginine methyltransferase 7 shRNA knockdown (KD) HeLa cells with 30 μ g of total cell lysates. β -Tubulin serves as a loading control. The blot was incubated with anti-Protein arginine methyltransferase 7 antibody (Cat#61505, 1:5,000) and HRP-conjugated goat anti-rabbit secondary antibody (Cat#201, 1:20,000) respectively. Image was developed using FeQ™ ECL Substrate Kit (Cat#226).

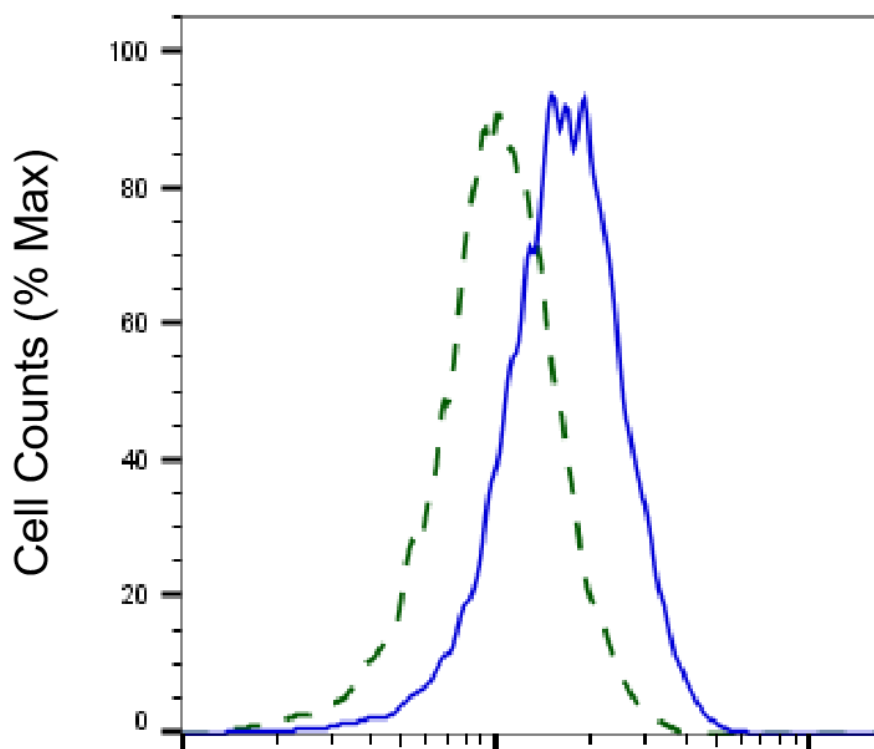
SUPPORT

SUPPORT@GENUINBIOTECH.COM
TEL: +1-540-855-7041

ORDERS

SALES@GENUINBIOTECH.COM
FAX: +1-540-855-7041

WWW.GENUINBIOTECH.COM



Copyright ©2025 Genuin Biotechnologies LLC

Protein arginine methyltransferase 7-Alexa Fluor® 647

Validation of Protein arginine methyltransferase 7 knockdown using flow cytometry. Wild-type(WT, Blue) and knockdown(KD, Green) HeLa cells were stained with anti-Protein arginine methyltransferase 7 antibody (Cat#61505, 1:2,000) and analyzed using BD flow cytometer.