

KD-Validated Anti-PTPN11 Recombinant Rabbit Monoclonal Antibody



Catalog #: 61506

Aliases

PTPN11; Protein Tyrosine Phosphatase Non-Receptor Type 11; SH-PTP2; PTP2C; BPTP3; SHP-2; SHP2; SH2 Domain-Containing Protein Tyrosine Phosphatase 2; Tyrosine-Protein Phosphatase Non-Receptor Type 11; Protein-Tyrosine Phosphatase 1D; Protein-Tyrosine Phosphatase 2C; EC 3.1.3.48; SH-PTP3; PTP-1D; NS1; Protein Tyrosine Phosphatase, Non-Receptor Type 11; Noonan Syndrome 1; METCDS; SHPTP2; PTP-2C; JMML; Shp2; CFC

Background

Gene Name: PTPN11

NCBI Gene Entry: [5781](#)

UniProt Entry: [Q06124](#)

Application Information

Molecular Weight: Predicted, 68 kDa, observed, 68 kDa

Clonality: Rabbit monoclonal antibody

Clone ID: 23GB2670

Species Reactivity: Human, mouse, rat

Applications Tested: Western blotting (WB), flow cytometry (FCM), immunocytochemistry (IC)

Immunogen

A synthesized peptide derived from human SHP2

Isotype

Rabbit IgG

Storage Buffer

Supplied in PBS (pH 7.4) containing 50% glycerol, and 0.02% sodium azide.

Storage

Store at -20 °C for one year.

Recommended Dilutions

Western Blotting (WB): 1:1,000-1:5,000

Flow Cytometry (FCM): 1:2,000

Immunocytochemistry (IC): 1:100-1:1,000

SUPPORT

SUPPORT@GENUINBIOTECH.COM
TEL: +1-540-855-7041

ORDERS

SALES@GENUINBIOTECH.COM
FAX: +1-540-855-7041

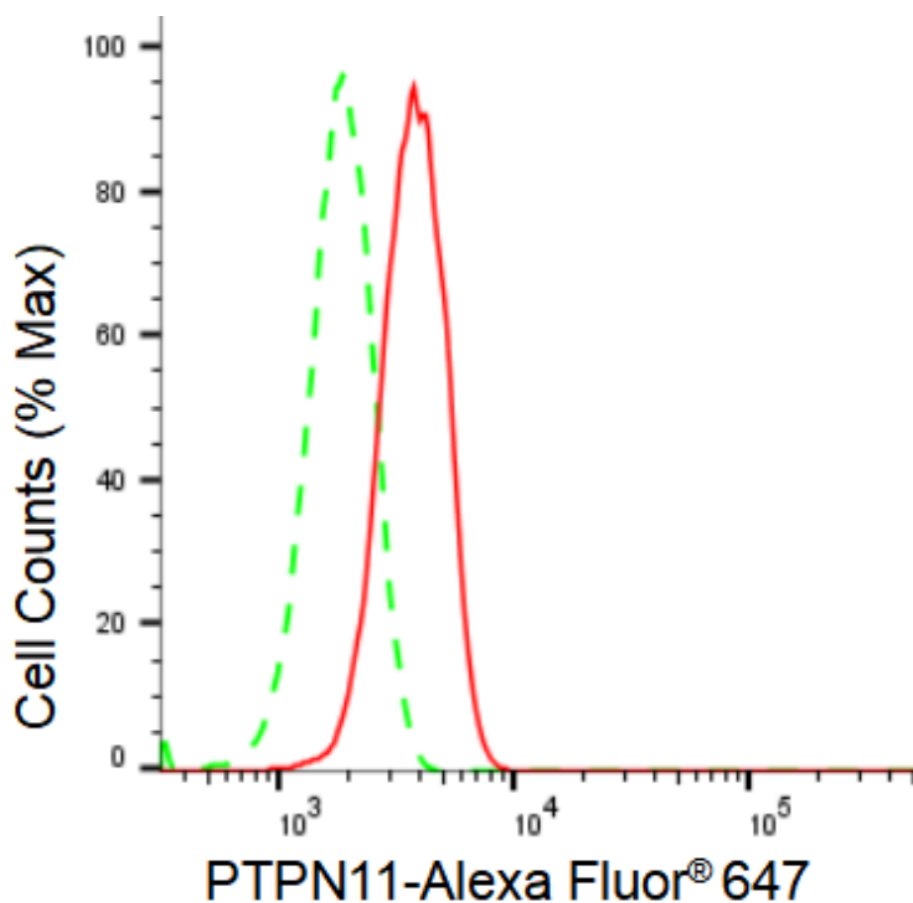
WWW.GENUINBIOTECH.COM

KD-Validated Anti-PTPN11 Recombinant Rabbit Monoclonal Antibody

PAGE 2

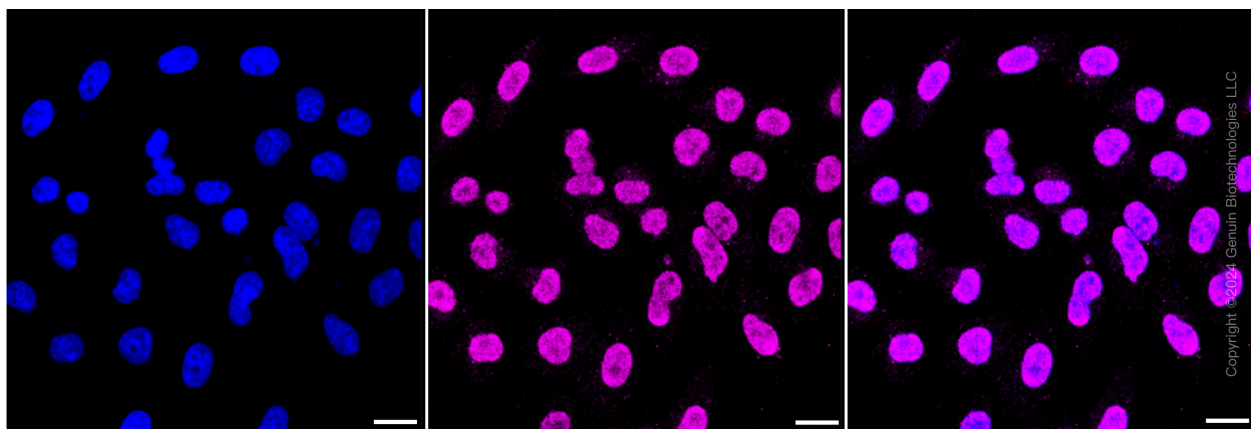
Note: This product is for research use only.

Validation Data



Copyright ©2024 Genuin Biotechnologies LLC

Flow cytometric analysis of PTPN11 expression in HepG2 cells using PTPN11 antibody (Cat#61506, 1:2,000). Green, isotype control; red, PTPN11.



Copyright ©2024 Genuin Biotechnologies LLC

Immunocytochemical staining of HepG2 cells with PTPN11 antibody (Cat#61506, 1:1,000). Nuclei were stained blue with DAPI; PTPN11 was stained magenta with Alexa Fluor® 647. Images were taken using Leica stellaris 5. Protein abundance based on laser Intensity and smart

SUPPORT

SUPPORT@GENUINBIOTECH.COM
TEL: +1-540-855-7041

ORDERS

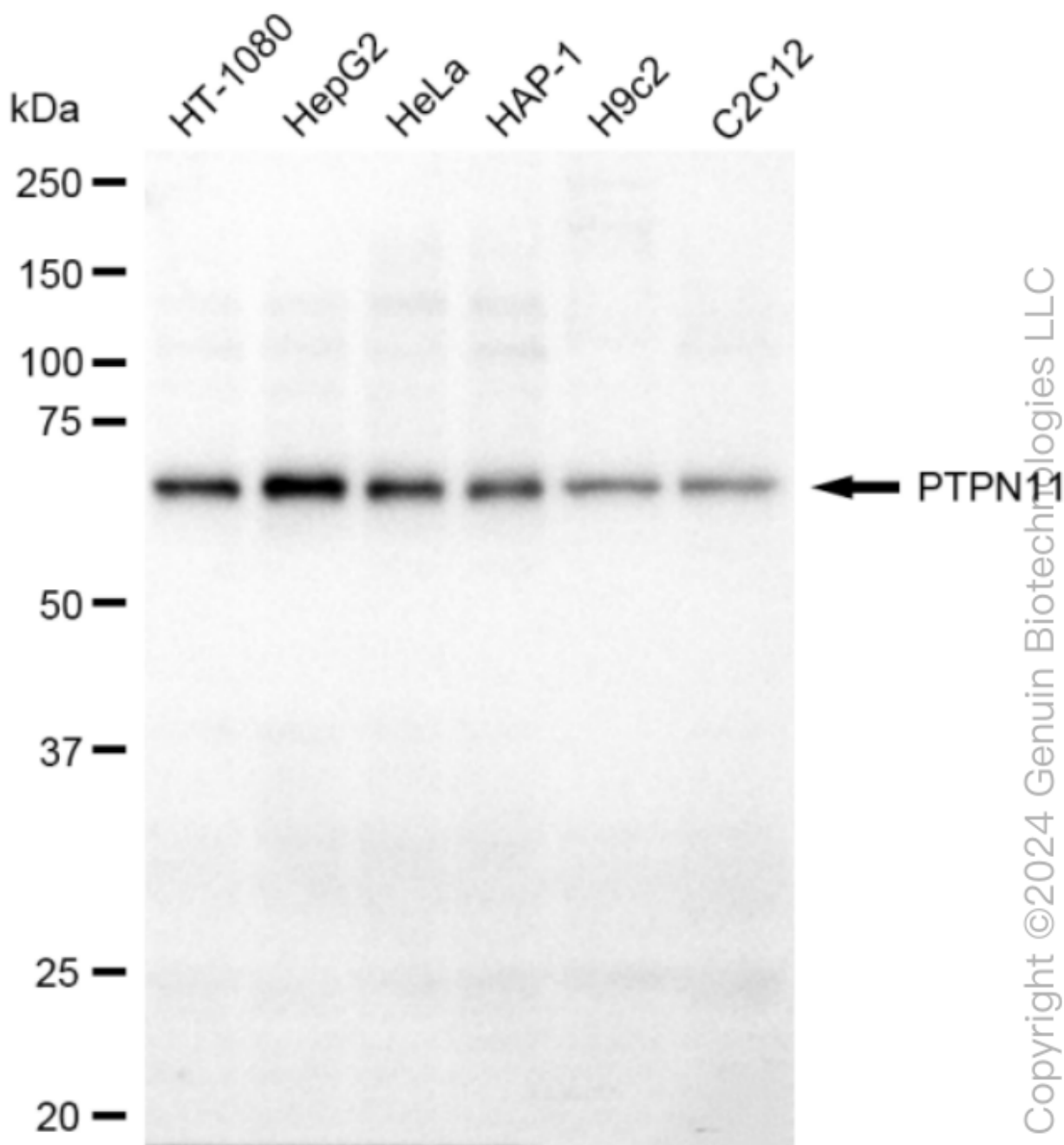
SALES@GENUINBIOTECH.COM
FAX: +1-540-855-7041

WWW.GENUINBIOTECH.COM

KD-Validated Anti-PTPN11 Recombinant Rabbit Monoclonal Antibody

PAGE 3

gain: Low. Scale bar: 20 μ m.



Western blotting analysis using anti-PTPN11 antibody (Cat#61506). Total cell lysates (30 μ g) from various cell lines were loaded and separated by SDS-PAGE. The blot was incubated with anti-PTPN11 antibody (Cat#61506, 1:5,000) and HRP-conjugated goat anti-rabbit secondary antibody (Cat#201, 1:20,000) respectively. Image was developed using FeQ™ ECL Substrate Kit (Cat#226). PTPN11, protein tyrosine phosphatase non-receptor type 11.

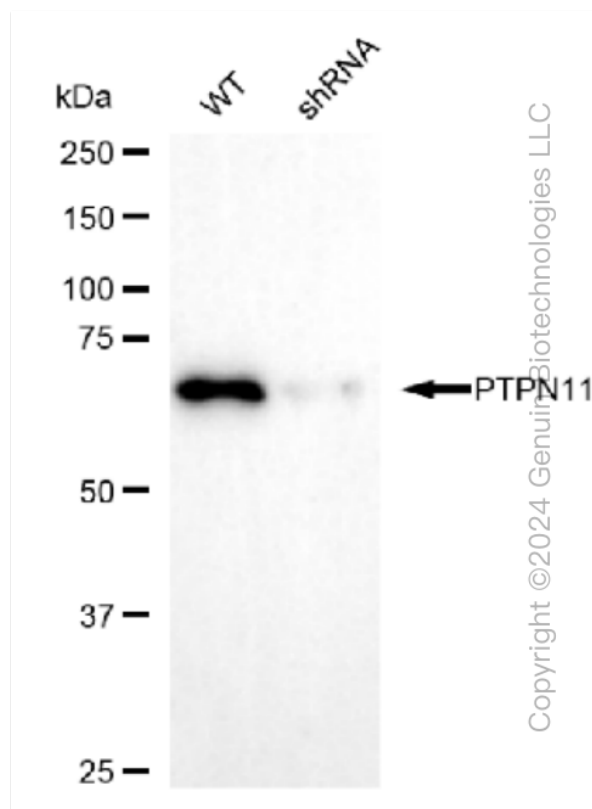
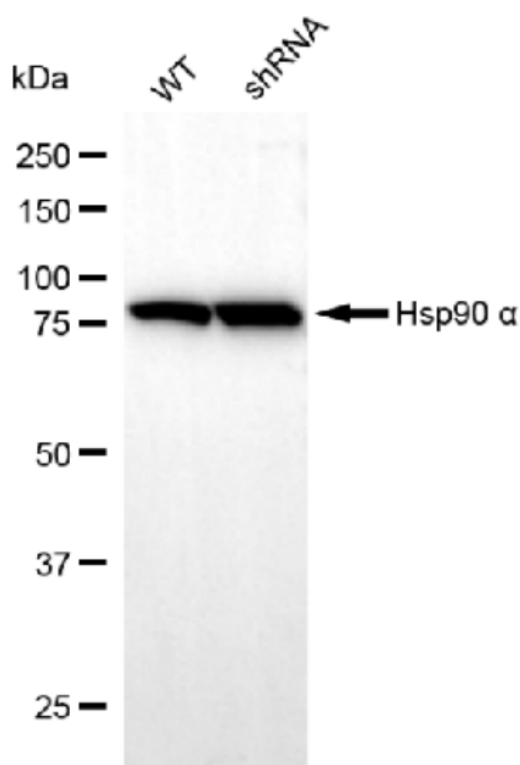
SUPPORT

SUPPORT@GENUINBIOTECH.COM
TEL: +1-540-855-7041

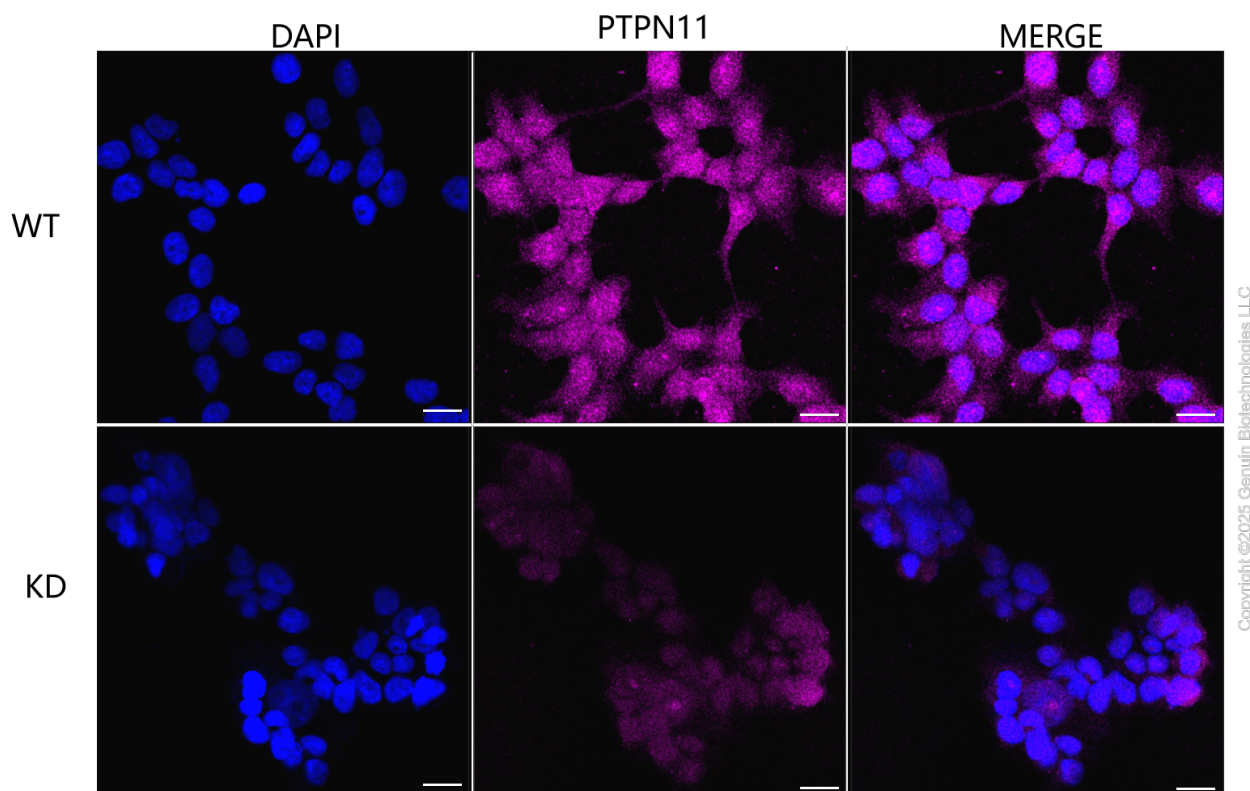
ORDERS

SALES@GENUINBIOTECH.COM
FAX: +1-540-855-7041

WWW.GENUINBIOTECH.COM



Western blotting analysis using anti-PTPN11 antibody (Cat#61506). PTPN11 expression in wild type (WT) and PTPN11 shRNA knockdown (KD) HeLa cells with 30 μ g of total cell lysates. β -Tubulin serves as a loading control. The blot was incubated with anti-PTPN11 antibody (Cat#61506, 1:5000) and HRP-conjugated goat anti-rabbit secondary antibody (Cat#201, 1:20000) respectively. Image was developed using FeQ™ ECL Substrate Kit (Cat#226).



Immunocytochemical staining of HeLa cells using anti-PTPN11 antibody (Cat#61506, 1:1,000), Top panel: wild-type (WT); Bottom panel: PTPN11 shRNA knockdown (KD). Nuclei were stained blue with DAPI; PTPN11 was stained magenta with Alexa Fluor® 647. Scale bar, 20 μ m.