

KD-Validated Anti-PVR Recombinant Rabbit Monoclonal Antibody



Catalog #: 61508

Aliases

PVR; PVR Cell Adhesion Molecule; Poliovirus Receptor; CD155; NECL5; HVED; PVS; Nectin-Like Protein 5; Necl-5; NECL-5; TAGE4; Nectin-Like 5; CD155 Antigen; Tage4

Background

Gene Name: PVR

NCBI Gene Entry: [5817](#)

UniProt Entry: [P15151](#)

Application Information

Molecular Weight: Predicted, 45 kDa, observed, 70 kDa

Clonality: Rabbit monoclonal antibody

Clone ID: 23GB2575

Species Reactivity: Human

Applications Tested: Western blotting (WB), immunocytochemistry (IC)

Immunogen

A synthesized peptide derived from human Poliovirus Receptor

Isotype

Rabbit IgG

Storage Buffer

Supplied in PBS (pH 7.4) containing 50% glycerol, and 0.02% sodium azide.

Storage

Store at -20 °C for one year.

Recommended Dilutions

Western Blotting (WB): 1:1,000-1:5,000

Immunocytochemistry (IC): 1:100-1:1,000

Note: This product is for research use only.

Validation Data

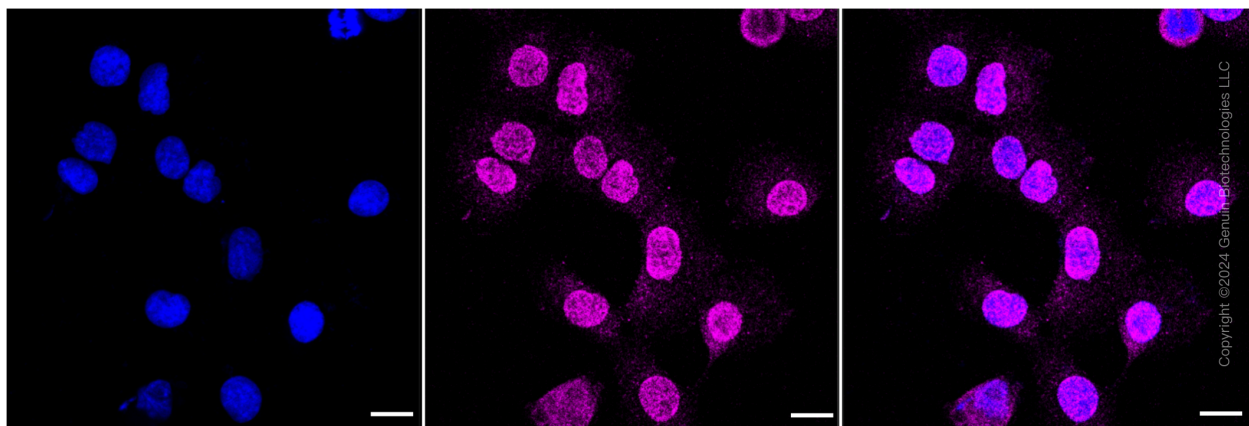
SUPPORT

SUPPORT@GENUINBIOTECH.COM
TEL: +1-540-855-7041

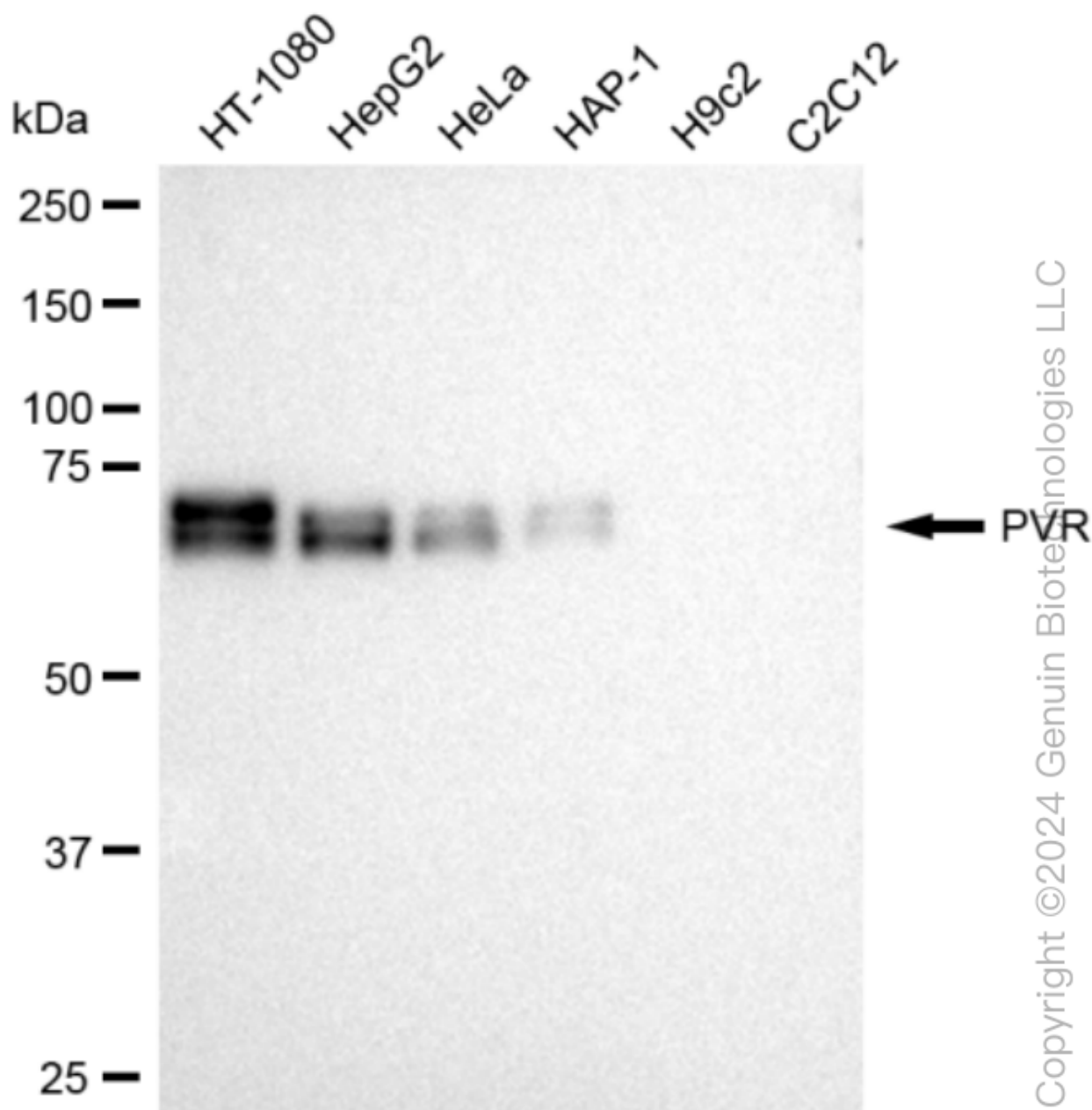
ORDERS

SALES@GENUINBIOTECH.COM
FAX: +1-540-855-7041

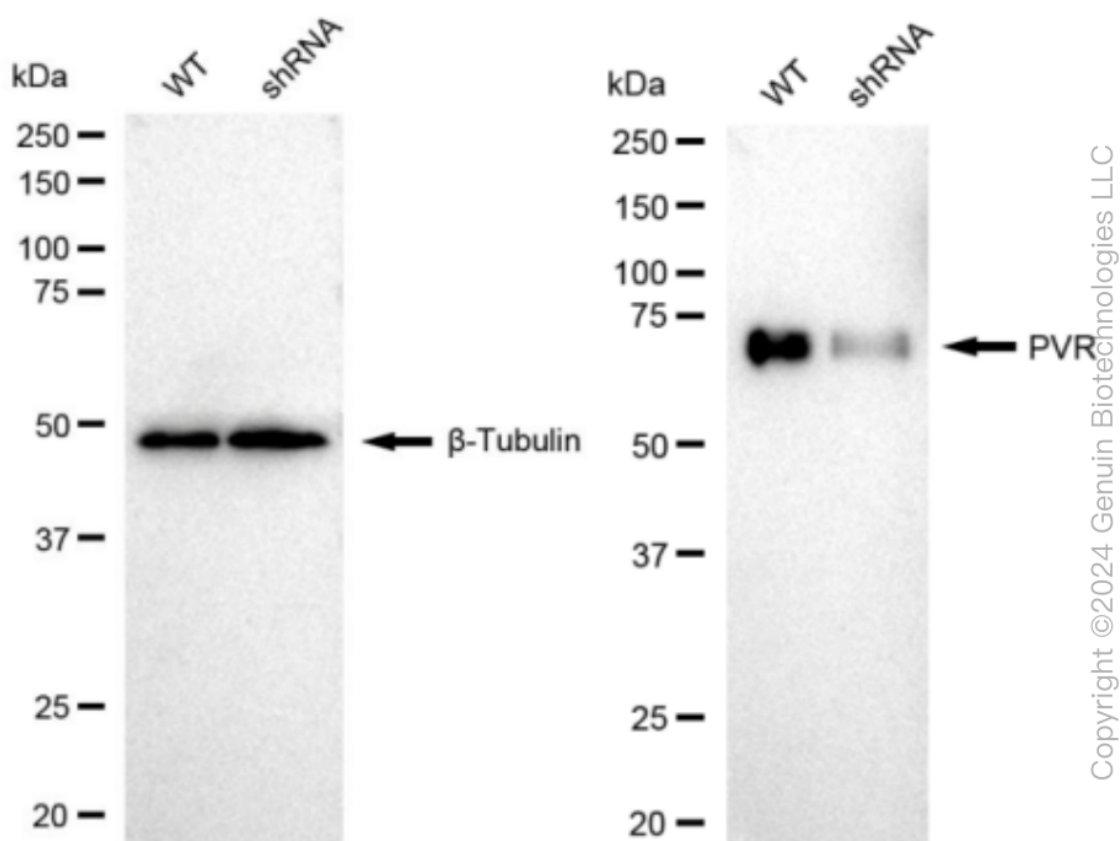
WWW.GENUINBIOTECH.COM



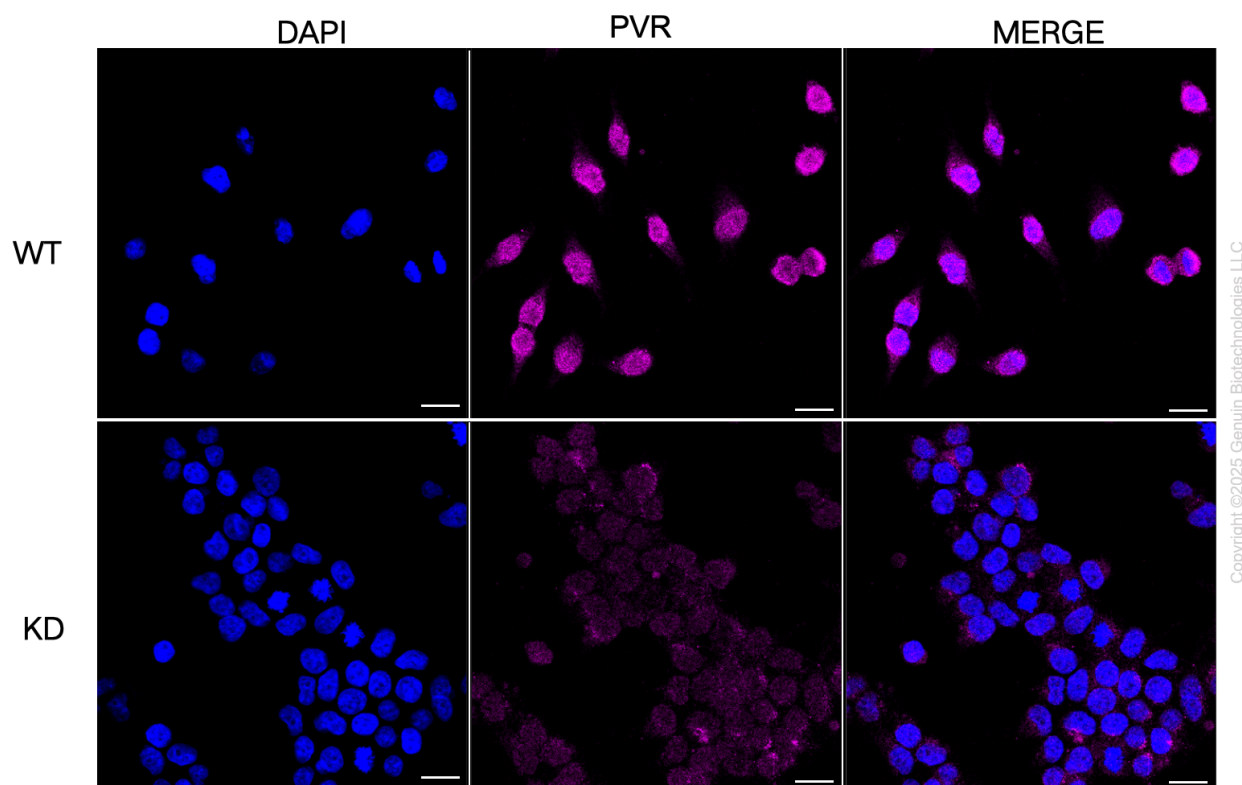
Immunocytochemical staining of HT-1080 cells with PVR antibody (Cat#61508, 1:1,000). Nuclei were stained blue with DAPI; PVR was stained magenta with Alexa Fluor® 647. Images were taken using Leica stellaris 5. Protein abundance based on laser Intensity and smart gain: Low. Scale bar: 20 μ m.



Western blotting analysis using anti-PVR antibody (Cat#61508). Total cell lysates (30 µg) from various cell lines were loaded and separated by SDS-PAGE. The blot was incubated with anti-PVR antibody (Cat#61508, 1:5,000) and HRP-conjugated goat anti-rabbit secondary antibody (Cat#201, 1:20,000) respectively. Image was developed using FeQ™ ECL Substrate Kit (Cat#226).



Western blotting analysis using anti-PVR antibody (Cat#61508). PVR expression in wild type (WT) and PVR shRNA knockdown (KD) HeLa cells with 30 µg of total cell lysates. β-Tubulin serves as a loading control. The blot was incubated with anti-PVR antibody (Cat#61508, 1:5000) and HRP-conjugated goat anti-rabbit secondary antibody (Cat#201, 1:20000) respectively. Image was developed using FeQ™ ECL Substrate Kit (Cat#226).



Immunocytochemical staining of HeLa cells using anti-PVR antibody (Cat#61508, 1:1,000), Top panel: wild-type (WT); Bottom panel: PVR shRNA knockdown (KD). Nuclei were stained blue with DAPI;PVR was stained magenta with Alexa Fluor® 647. Scale bar, 20 μ m. Permeabilization: Triton.