

KD-Validated Anti-PWP1 Recombinant Rabbit Monoclonal Antibody



Catalog #: 61509

Aliases

PWP1; PWP1 Homolog, Endonuclein; IEF-SSP-9502; Periodic Tryptophan Protein 1 Homolog; Keratinocyte Protein IEF SSP 9502; Endonuclein; Nuclear Phosphoprotein Similar To S. Cerevisiae PWP1; PWP1 Homolog (S. Cerevisiae); NCLB

Background

Gene Name: PWP1

NCBI Gene Entry: [11137](#)

UniProt Entry: [Q13610](#)

Application Information

Molecular Weight: Predicted, 56 kDa, observed, 74 kDa

Clonality: Rabbit monoclonal antibody

Clone ID: 23GB2580

Species Reactivity: Human, mouse

Applications Tested: Western blotting (WB), flow cytometry (FCM), immunocytochemistry (IC)

Immunogen

A synthesized peptide derived from human PWP1

Isotype

Rabbit IgG

Storage Buffer

Supplied in PBS (pH 7.4) containing 50% glycerol, and 0.02% sodium azide.

Storage

Store at -20 °C for one year.

Recommended Dilutions

Western Blotting (WB): 1:1,000-1:5,000

Flow Cytometry (FCM): 1:2,000

Immunocytochemistry (IC): 1:100-1:1,000

Note: This product is for research use only.

SUPPORT

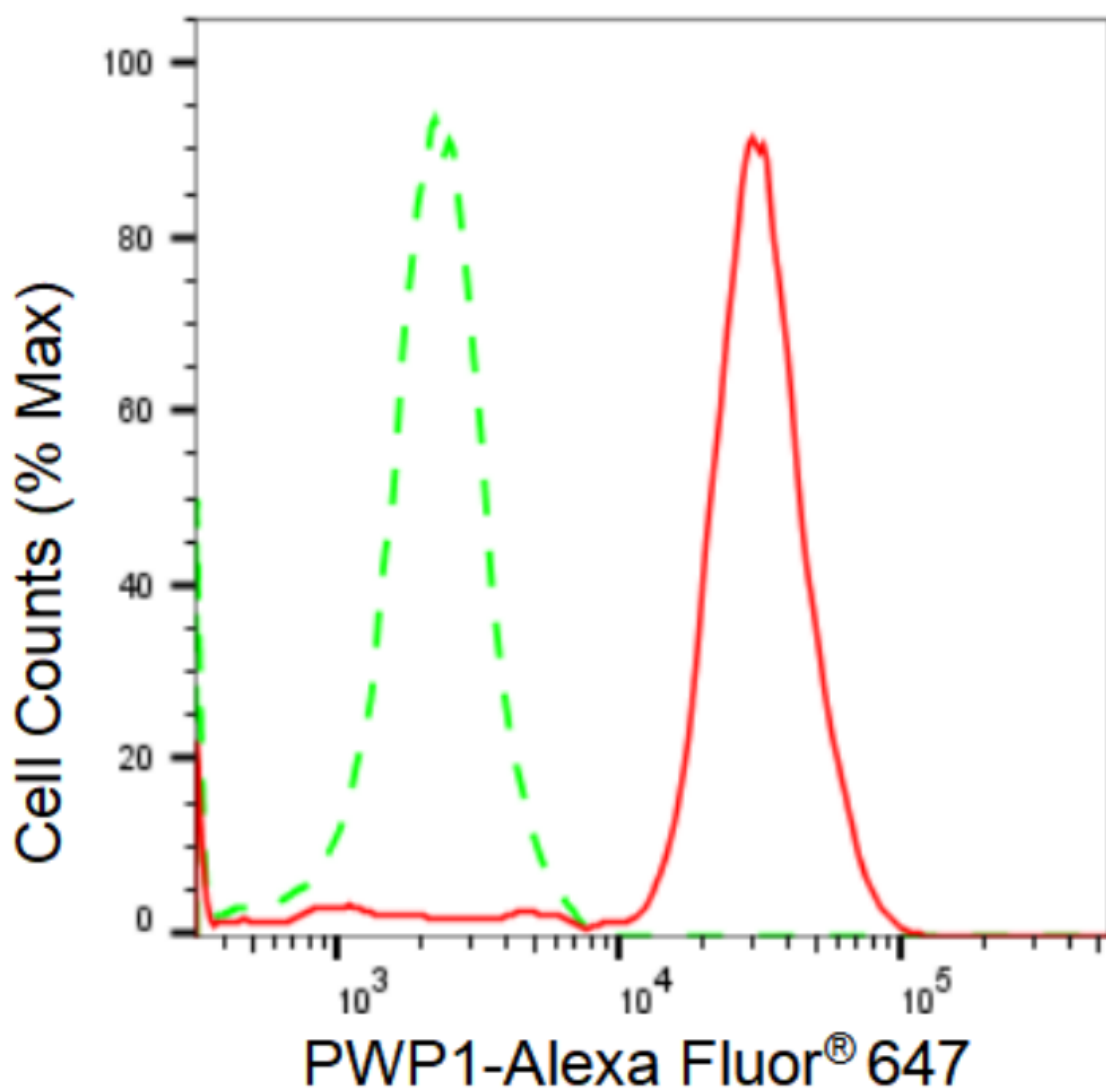
SUPPORT@GENUINBIOTECH.COM
TEL: +1-540-855-7041

ORDERS

SALES@GENUINBIOTECH.COM
FAX: +1-540-855-7041

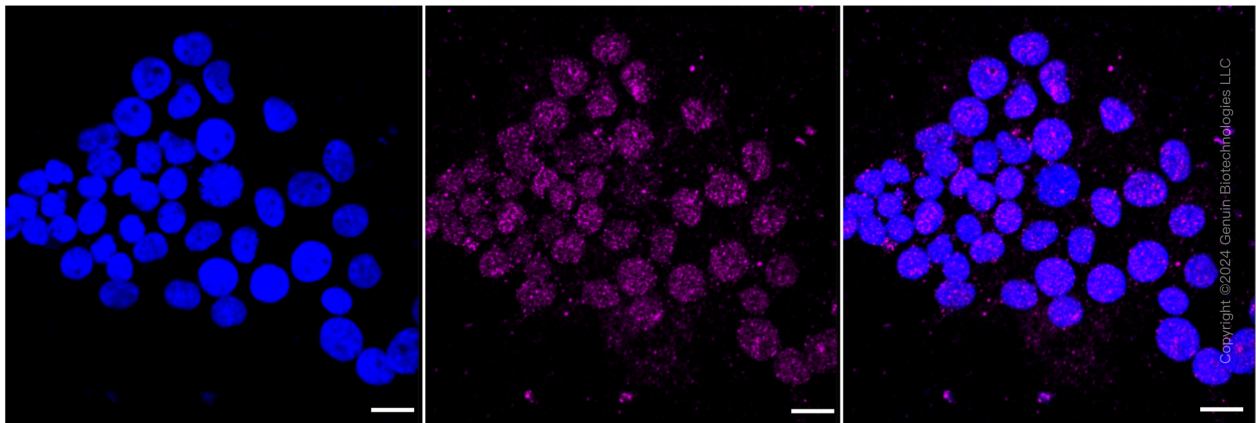
WWW.GENUINBIOTECH.COM

Validation Data

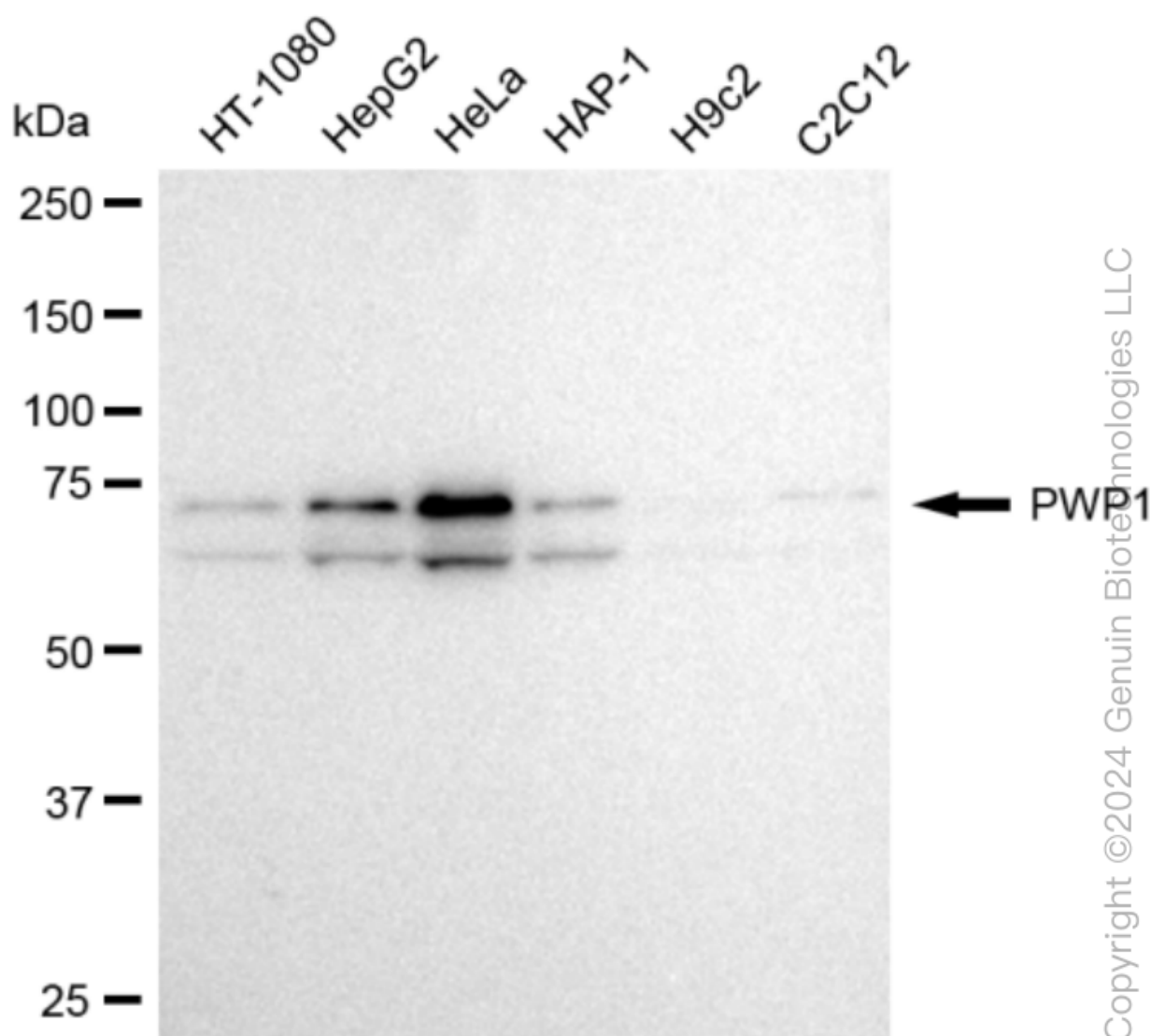


Copyright ©2024 Genuin Biotechnologies LLC

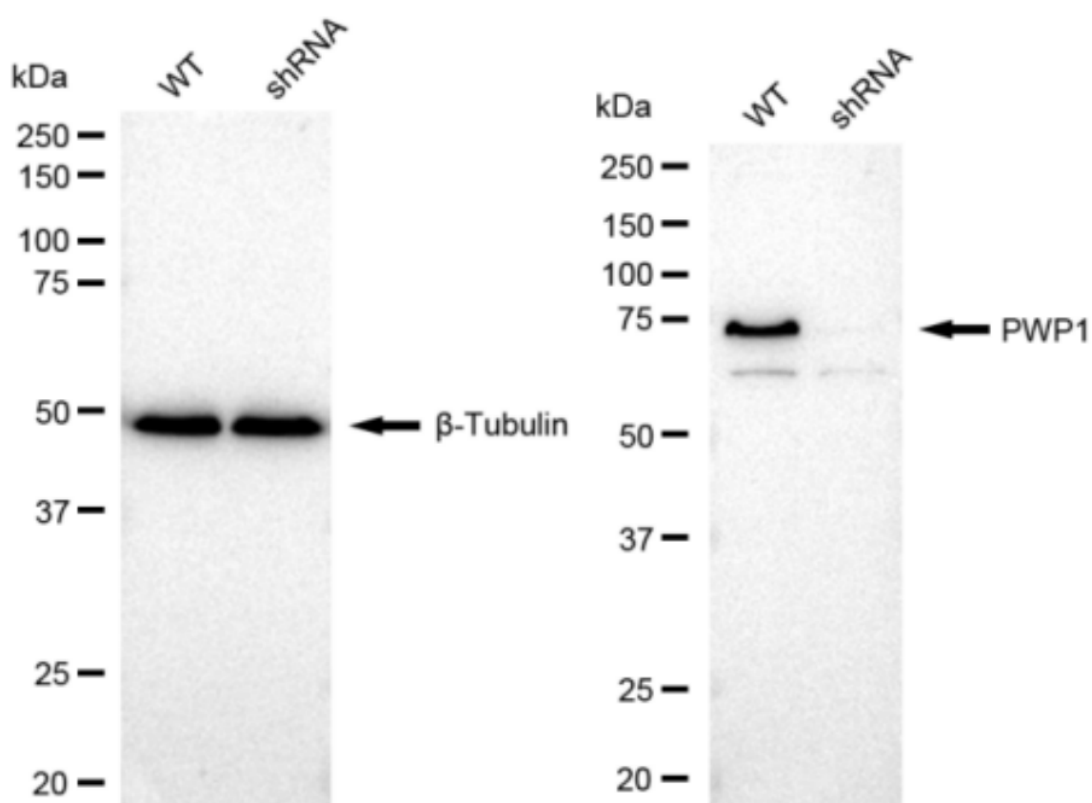
Flow cytometric analysis of PWP1 expression in HeLa cells using PWP1 antibody (Cat#61509, 1:2,000). Green, isotype control; red, PWP1.



Immunocytochemical staining of HeLa cells with PWP1 antibody (Cat#61509, 1:1,000). Nuclei were stained blue with DAPI; PWP1 was stained magenta with Alexa Fluor® 647. Images were taken using Leica stellaris 5. Protein abundance based on laser Intensity and smart gain: Medium. Scale bar: 20 μ m.



Western blotting analysis using anti-PWP1 antibody (Cat#61509). Total cell lysates (30 µg) from various cell lines were loaded and separated by SDS-PAGE. The blot was incubated with anti-PWP1 antibody (Cat#61509, 1:5,000) and HRP-conjugated goat anti-rabbit secondary antibody (Cat#201, 1:20,000) respectively. Image was developed using FeQ™ ECL Substrate Kit (Cat#226).



Copyright ©2024 Genuin Biotechnologies LLC

Western blotting analysis using anti-PWP1 antibody (Cat#61509). PWP1 expression in wild type (WT) and PWP1 shRNA knockdown (KD) HeLa cells with 30 μ g of total cell lysates. β -Tubulin serves as a loading control. The blot was incubated with anti-PWP1 antibody (Cat#61509, 1:5,000) and HRP-conjugated goat anti-rabbit secondary antibody (Cat#201, 1:20,000) respectively. Image was developed using FeQ™ ECL Substrate Kit (Cat#226).