

KD-Validated Anti-Phospho-Raf1 (S621) Recombinant Rabbit Monoclonal Antibody



Catalog #: 61511

Aliases

RAF1; Raf-1 Proto-Oncogene, Serine/Threonine Kinase; Raf-1; CRAF; RAF Proto-Oncogene Serine/Threonine-Protein Kinase; V-Raf-1 Murine Leukemia Viral Oncogene Homolog 1; C-Raf Proto-Oncogene, Serine/Threonine Kinase; Proto-Oncogene C-RAF; EC 2.7.11.1; C-Raf; V-Raf-1 Murine Leukemia Viral Oncogene-Like Protein 1; Raf Proto-Oncogene Serine/Threonine Protein Kinase; Oncogene RAF1; EC 2.7.11; CMD1NN; C-RAF; RAF-1; CRaf; NS5; RAF

Background

Gene Name: RAF1

NCBI Gene Entry: [5894](#)

UniProt Entry: [P04049](#)

Application Information

Molecular Weight: Predicted, 73 kDa, observed, 73 kDa

Clonality: Rabbit monoclonal antibody

Clone ID: 23GB2650

Species Reactivity: Human, mouse, rat

Applications Tested: Western blotting (WB), flow cytometry (FCM), immunocytochemistry (IC)

Immunogen

A synthesized peptide derived from human Phospho-Raf1 (S621)

Isotype

Rabbit IgG

Storage Buffer

Supplied in PBS (pH 7.4) containing 50% glycerol, and 0.02% sodium azide.

Storage

Store at -20 °C for one year.

Recommended Dilutions

Western Blotting (WB): 1:1,000-1:5,000

Flow Cytometry (FCM): 1:2,000

Immunocytochemistry (IC): 1:100-1:1,000

SUPPORT

SUPPORT@GENUINBIOTECH.COM
TEL: +1-540-855-7041

ORDERS

SALES@GENUINBIOTECH.COM
FAX: +1-540-855-7041

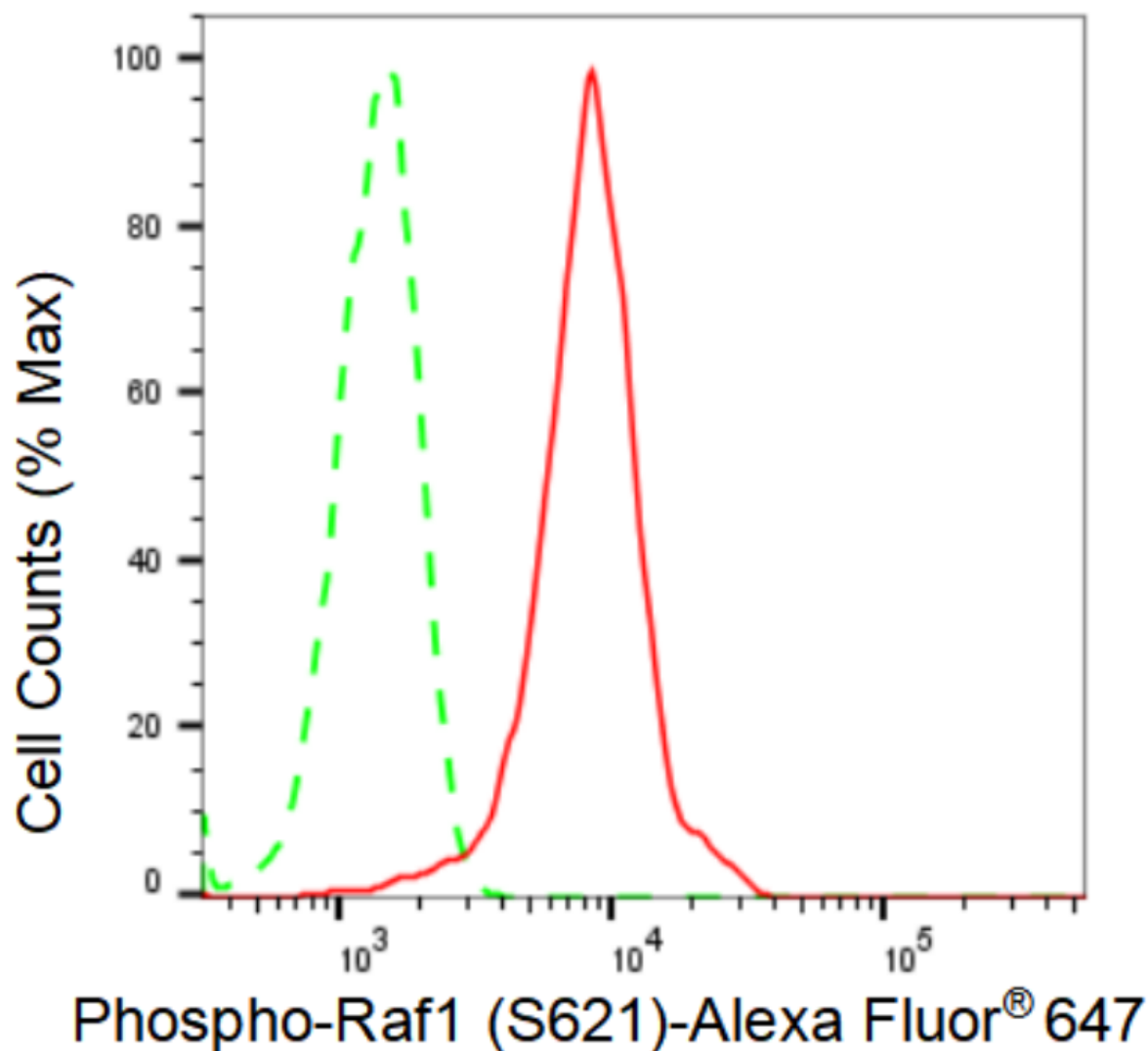
WWW.GENUINBIOTECH.COM

KD-Validated Anti-Phospho-Raf1 (S621) Recombinant Rabbit Monoclonal Antibody

PAGE 2

Note: This product is for research use only.

Validation Data



Flow cytometric analysis of Phospho-Raf1 (S621) expression in HeLa cells using Phospho-Raf1 (S621) antibody (Cat#61511, 1:2,000). Green, isotype control; red, Phospho-Raf1 (S621).

SUPPORT

SUPPORT@GENUINBIOTECH.COM
TEL: +1-540-855-7041

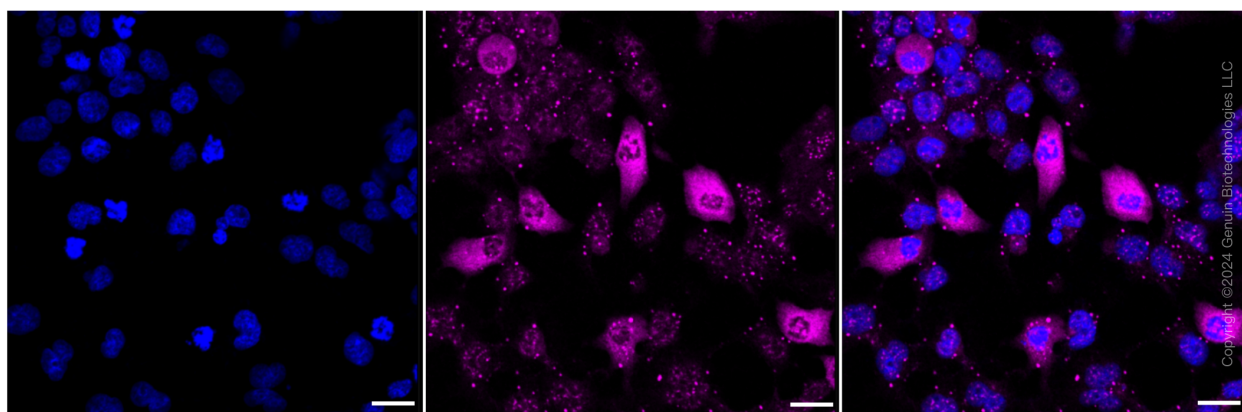
ORDERS

SALES@GENUINBIOTECH.COM
FAX: +1-540-855-7041

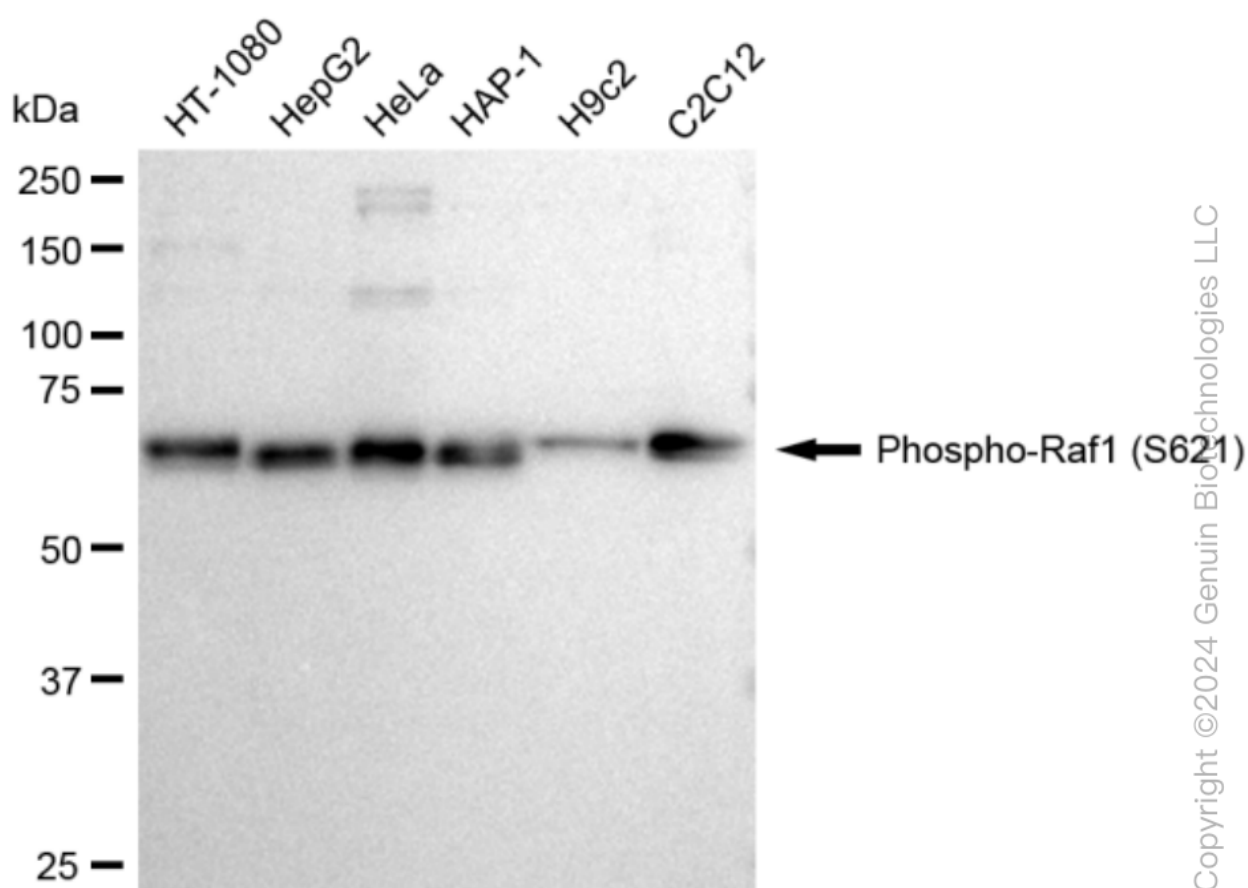
WWW.GENUINBIOTECH.COM

KD-Validated Anti-Phospho-Raf1 (S621) Recombinant Rabbit Monoclonal Antibody

PAGE 3



Immunocytochemical staining of HeLa cells with Phospho-Raf1 (S621) antibody (Cat#61511, 1:1,000). Nuclei were stained blue with DAPI; Phospho-Raf1 (S621) was stained magenta with Alexa Fluor® 647. Images were taken using Leica stellaris 5. Protein abundance based on laser Intensity and smart gain: High. Scale bar: 20 μ m.



Western blotting analysis using anti-Phospho-Raf1 (S621) antibody (Cat#61511). Total cell lysates (30 μ g) from various cell lines were loaded and separated by SDS-PAGE. The blot was incubated with anti-Phospho-Raf1 (S621) antibody (Cat#61511, 1:5,000) and HRP-conjugated goat anti-rabbit secondary antibody (Cat#201, 1:20,000) respectively. Image was developed using FeQ™

SUPPORT

SUPPORT@GENUINBIOTECH.COM
TEL: +1-540-855-7041

ORDERS

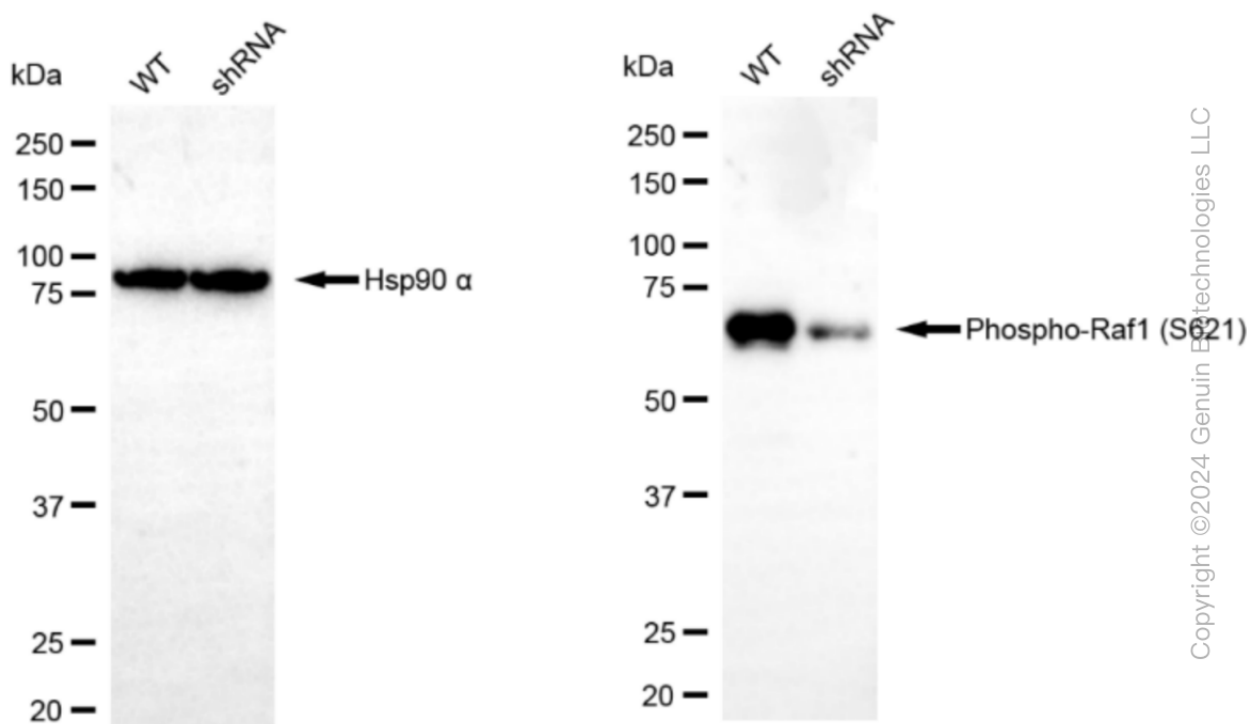
SALES@GENUINBIOTECH.COM
FAX: +1-540-855-7041

WWW.GENUINBIOTECH.COM

KD-Validated Anti-Phospho-Raf1 (S621) Recombinant Rabbit Monoclonal Antibody

PAGE 4

ECL Substrate Kit (Cat#226).



Western blotting analysis using anti-Phospho-Raf1 (S621) antibody (Cat#61511). Phospho-Raf1 (S621) expression in wild type (WT) and phospho-Raf1 (S621) shRNA knockdown (KD) HeLa cells with 30 μ g of total cell lysates. β -Tubulin serves as a loading control. The blot was incubated with anti-Phospho-Raf1 (S621) antibody (Cat#61511, 1:5000) and HRP-conjugated goat anti-rabbit secondary antibody (Cat#201, 1:20000) respectively. Image was developed using FeQ™ ECL Substrate Kit (Cat#226).

SUPPORT

SUPPORT@GENUINBIOTECH.COM
TEL: +1-540-855-7041

ORDERS

SALES@GENUINBIOTECH.COM
FAX: +1-540-855-7041

WWW.GENUINBIOTECH.COM