

KD-Validated Anti-Retinoid X receptor alpha Recombinant Rabbit Monoclonal Antibody



Catalog #: 61514

Aliases

RXRA; Retinoid X Receptor Alpha; NR2B1; Nuclear Receptor Subfamily 2 Group B Member 1; Retinoic Acid Receptor RXR-Alpha; RXR-Alpha; RXRalpha; Retinoid X Nuclear Receptor Alpha; Retinoid X Receptor, Alpha; RXR-ALPHA; RXRALPHA

Background

Gene Name: RXRA

NCBI Gene Entry: [6256](#)

UniProt Entry: [P19793](#)

Application Information

Molecular Weight: Predicted, 51 kDa, observed, 51 kDa

Clonality: Rabbit monoclonal antibody

Clone ID: 23GB2815

Species Reactivity: Human, mouse, rat

Applications Tested: Western blotting (WB), flow cytometry (FCM), immunocytochemistry (IC)

Immunogen

A synthesized peptide derived from human Retinoid X Receptor alpha

Isotype

Rabbit IgG

Storage Buffer

Supplied in PBS (pH 7.4) containing 50% glycerol, and 0.02% sodium azide.

Storage

Store at -20 °C for one year.

Recommended Dilutions

Western Blotting (WB): 1:1,000-1:5,000

Flow Cytometry (FCM): 1:2,000

Immunocytochemistry (IC): 1:100-1:1,000

Note: This product is for research use only.

SUPPORT

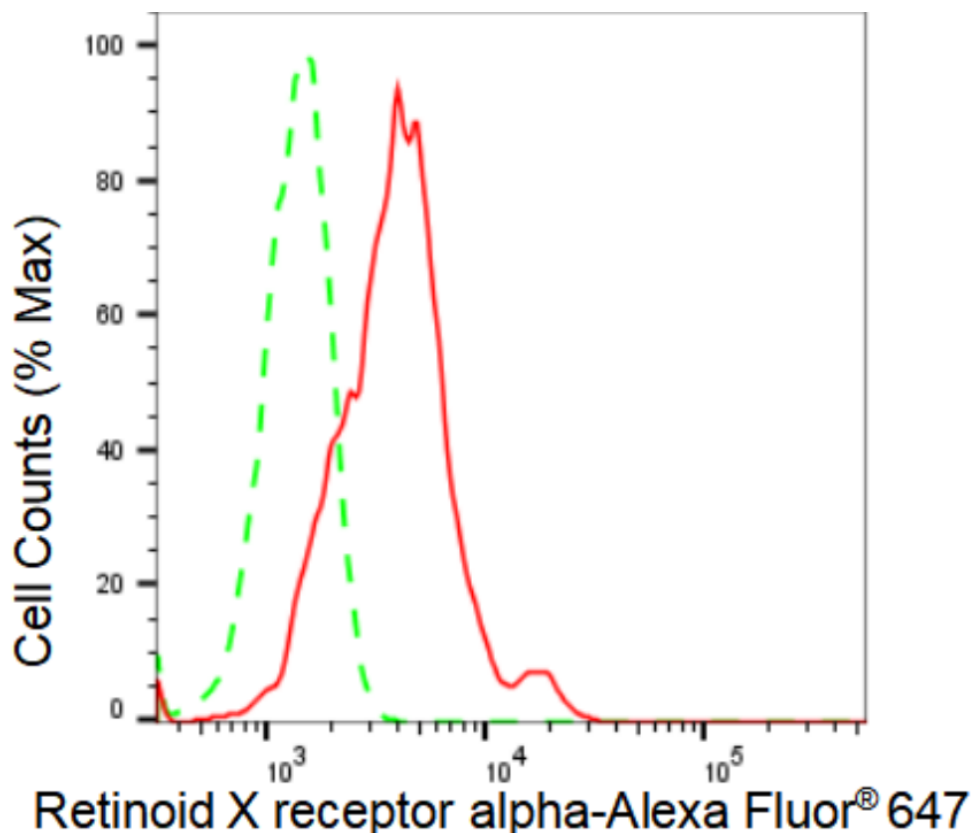
SUPPORT@GENUINBIOTECH.COM
TEL: +1-540-855-7041

ORDERS

SALES@GENUINBIOTECH.COM
FAX: +1-540-855-7041

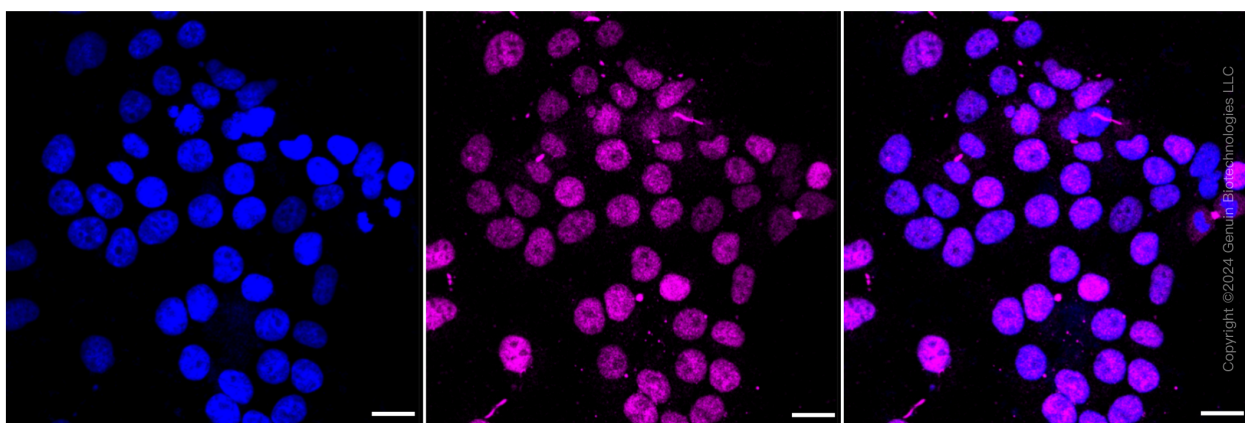
WWW.GENUINBIOTECH.COM

Validation Data



Copyright ©2024 Genuin Biotechnologies LLC

Flow cytometric analysis of Retinoid X receptor alpha expression in HeLa cells using Retinoid X receptor alpha antibody (Cat#61514, 1:2,000). Green, isotype control; red, Retinoid X receptor alpha.



Copyright ©2024 Genuin Biotechnologies LLC

Immunocytochemical staining of HeLa cells with Retinoid X receptor alpha antibody (Cat#61514, 1:1,000). Nuclei were stained blue with DAPI; Retinoid X receptor alpha was stained magenta with Alexa Fluor® 647. Images were taken using Leica stellaris 5. Protein abundance based on laser Intensity and smart gain: Medium. Scale bar: 20 μm.

SUPPORT

SUPPORT@GENUINBIOTECH.COM
TEL: +1-540-855-7041

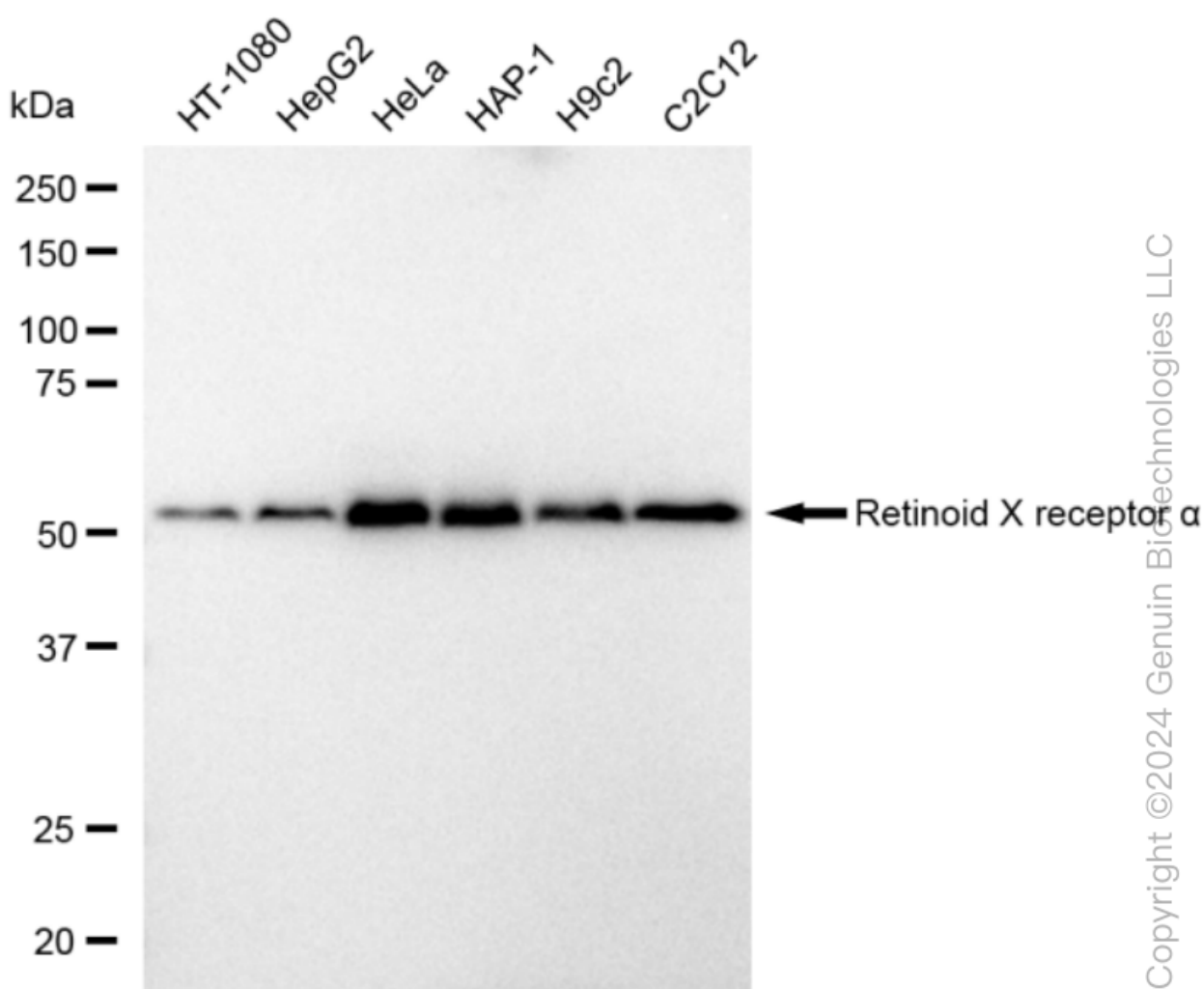
ORDERS

SALES@GENUINBIOTECH.COM
FAX: +1-540-855-7041

WWW.GENUINBIOTECH.COM

KD-Validated Anti-Retinoid X receptor alpha Recombinant Rabbit Monoclonal Antibody

PAGE 3



Copyright ©2024 Genuin Biotechnologies LLC

Western blotting analysis using anti-Retinoid X receptor alpha antibody (Cat#61514). Total cell lysates (30 µg) from various cell lines were loaded and separated by SDS-PAGE. The blot was incubated with anti-Retinoid X receptor alpha antibody (Cat#61514, 1:5,000) and HRP-conjugated goat anti-rabbit secondary antibody (Cat#201, 1:20,000) respectively. Image was developed using FeQ™ ECL Substrate Kit (Cat#226).

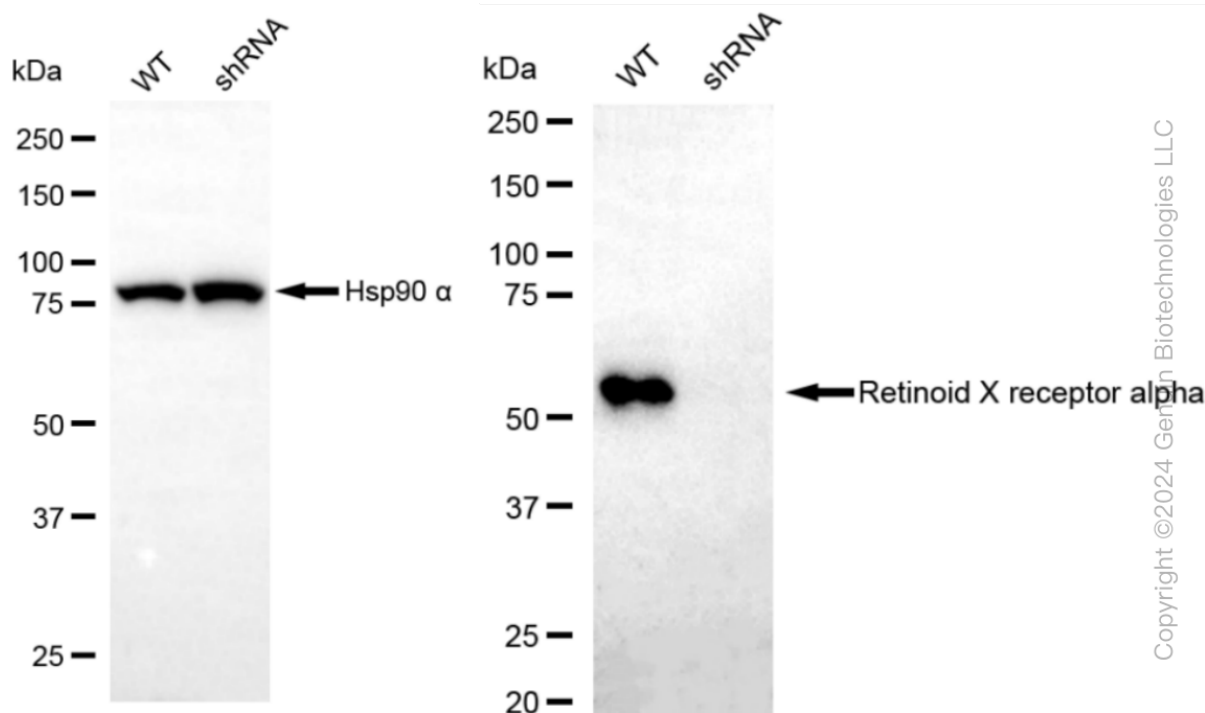
SUPPORT

SUPPORT@GENUINBIOTECH.COM
TEL: +1-540-855-7041

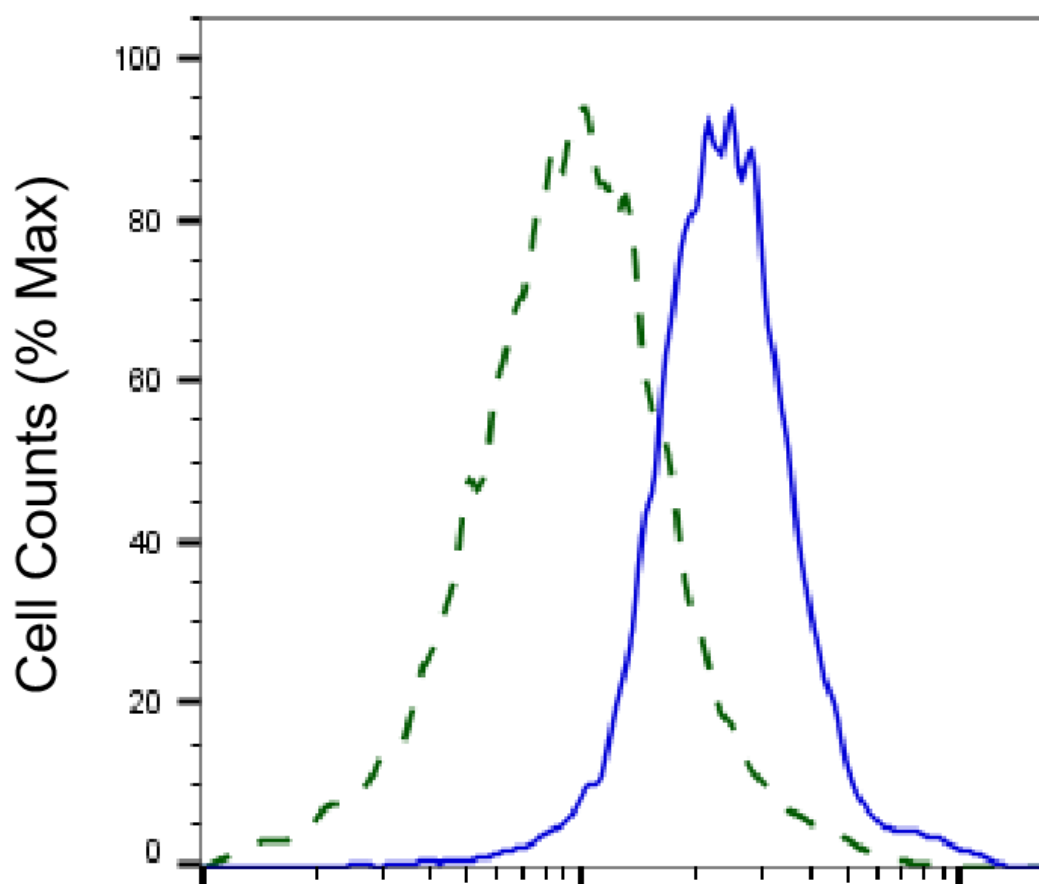
ORDERS

SALES@GENUINBIOTECH.COM
FAX: +1-540-855-7041

WWW.GENUINBIOTECH.COM



Western blotting analysis using anti-Retinoid X receptor alpha antibody (Cat#61514). Retinoid X receptor alpha expression in wild type (WT) and retinoid X receptor alpha shRNA knockdown (KD) HeLa cells with 30 μ g of total cell lysates. Hsp90 α serves as a loading control. The blot was incubated with anti-Retinoid X receptor alpha antibody (Cat#61514, 1:5,000) and HRP-conjugated goat anti-rabbit secondary antibody (Cat#201, 1:20,000) respectively. Image was developed using FeQ™ ECL Substrate Kit (Cat#226).



Copyright ©2025 Genuin Biotechnologies LLC

Retinoid X receptor alpha-Alexa Fluor® 647

Validation of Retinoid X receptor alpha knockdown using flow cytometry. Wild-type(WT, Blue) and knockdown(KD, Green) HeLa cells were stained with anti-Retinoid X receptor alpha antibody (Cat#61514, 1:2,000) and analyzed using BD flow cytometer.

SUPPORT

SUPPORT@GENUINBIOTECH.COM
TEL: +1-540-855-7041

ORDERS

SALES@GENUINBIOTECH.COM
FAX: +1-540-855-7041

WWW.GENUINBIOTECH.COM