

KD-Validated Anti-SEC24D Recombinant Rabbit Monoclonal Antibody



Catalog #: 61515

Aliases

SEC24D; SEC24 Homolog D, COPII Coat Complex Component; KIAA0755; Protein Transport Protein Sec24D; SEC24-Related Protein D; SEC24 (S. Cerevisiae) Related Gene Family, Member D; SEC24 Family, Member D (S. Cerevisiae); SEC24 Related Gene Family, Member D; SEC24 Family Member D; CLCRP2

Background

Gene Name: SEC24D
NCBI Gene Entry: [9871](#)
UniProt Entry: [O94855](#)

Application Information

Molecular Weight: Predicted, 113 kDa, observed, 113 kDa
Clonality: Rabbit monoclonal antibody
Clone ID: 23GB2510
Species Reactivity: Human, mouse, rat
Applications Tested: Western blotting (WB), flow cytometry (FCM), immunocytochemistry (IC)

Immunogen

A synthesized peptide derived from human SEC24D

Isotype

Rabbit IgG

Storage Buffer

Supplied in PBS (pH 7.4) containing 50% glycerol, and 0.02% sodium azide.

Storage

Store at -20 °C for one year.

Recommended Dilutions

Western Blotting (WB): 1:1,000-1:5,000
Flow Cytometry (FCM): 1:2,000
Immunocytochemistry (IC): 1:100-1:1,000

SUPPORT

SUPPORT@GENUINBIOTECH.COM
TEL: +1-540-855-7041

ORDERS

SALES@GENUINBIOTECH.COM
FAX: +1-540-855-7041

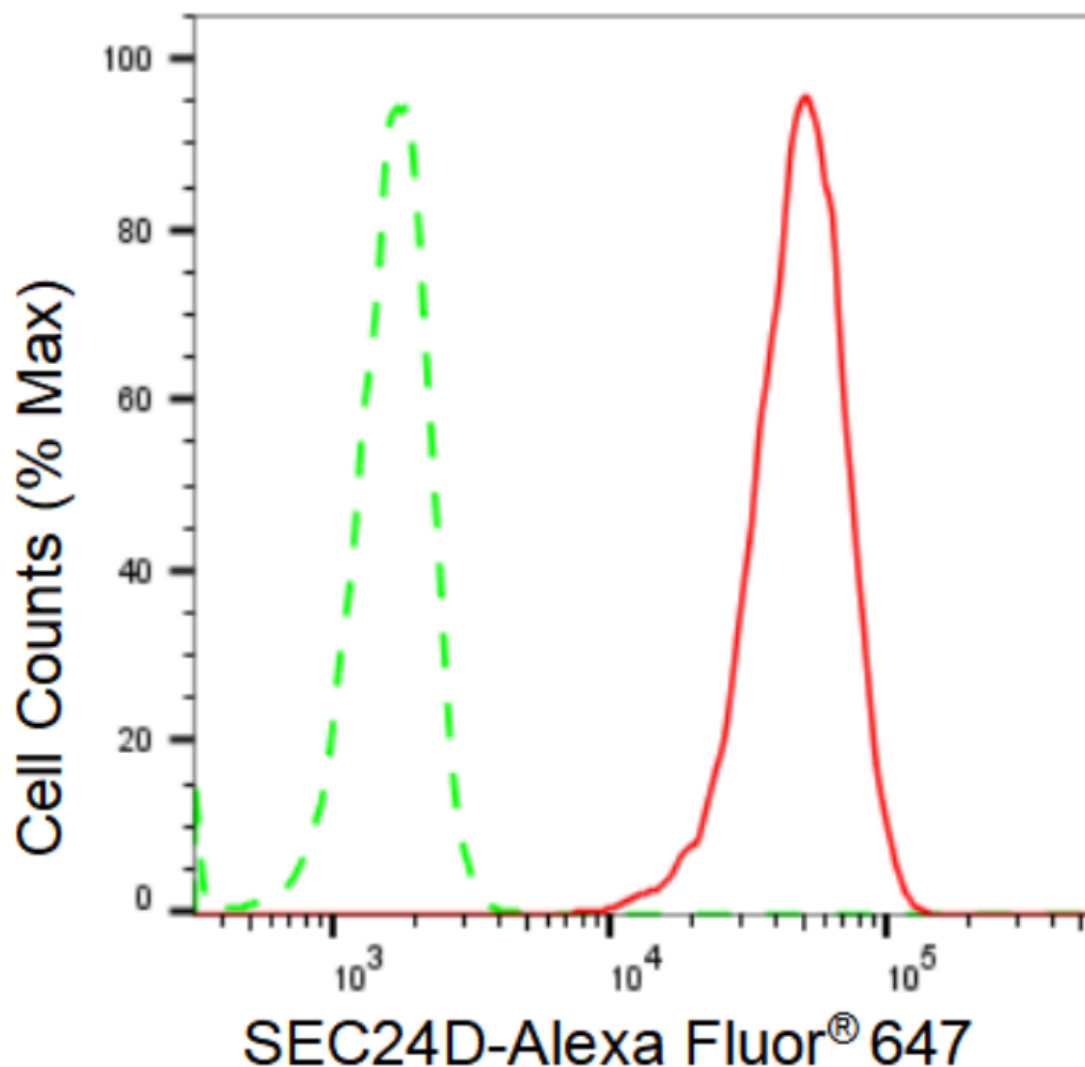
WWW.GENUINBIOTECH.COM

KD-Validated Anti-SEC24D Recombinant Rabbit Monoclonal Antibody

PAGE 2

Note: This product is for research use only.

Validation Data



Copyright ©2024 Genuin Biotechnologies LLC

Flow cytometric analysis of SEC24D expression in C2C12 cells using SEC24D antibody (Cat#61515, 1:2,000). Green, isotype control; red, SEC24D.

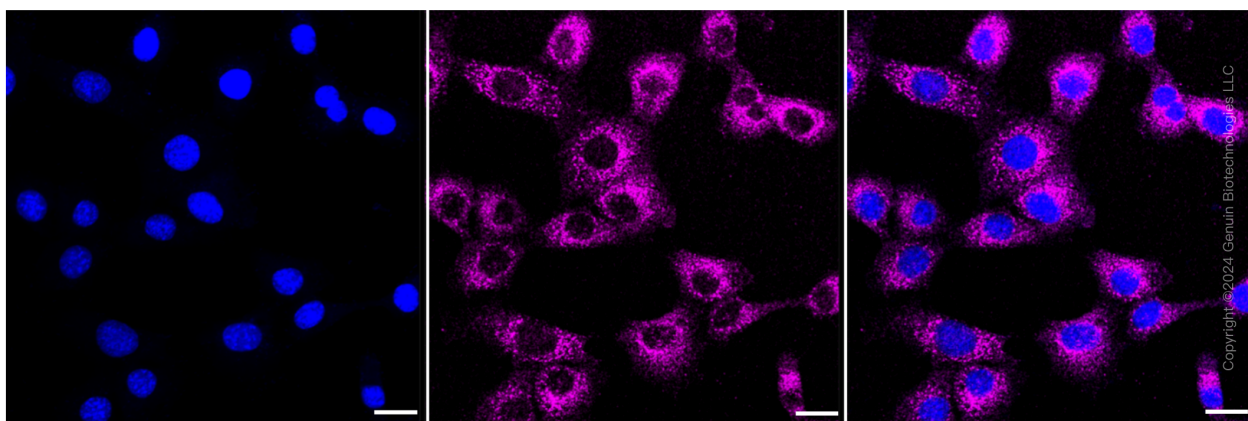
SUPPORT

SUPPORT@GENUINBIOTECH.COM
TEL: +1-540-855-7041

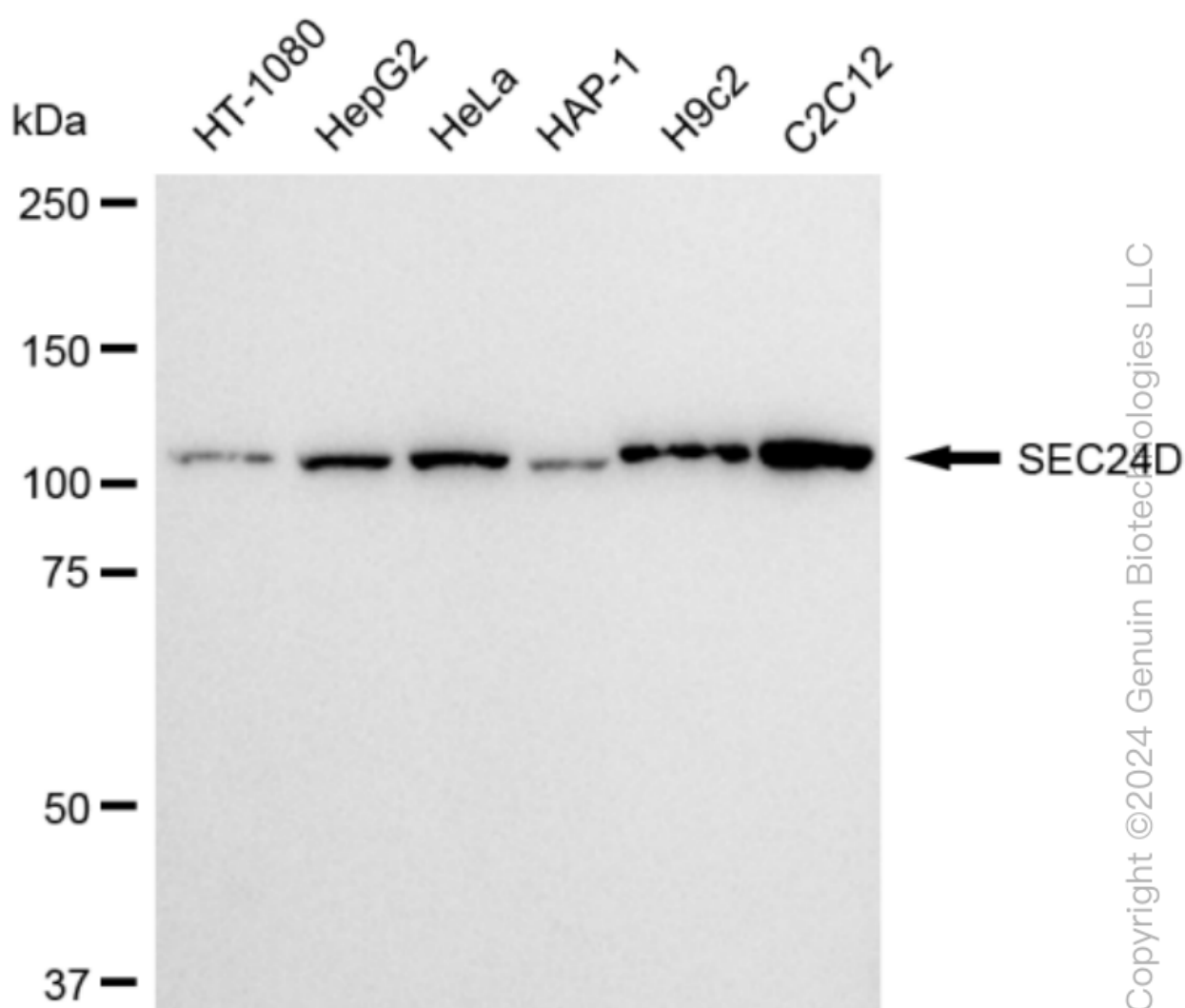
ORDERS

SALES@GENUINBIOTECH.COM
FAX: +1-540-855-7041

WWW.GENUINBIOTECH.COM



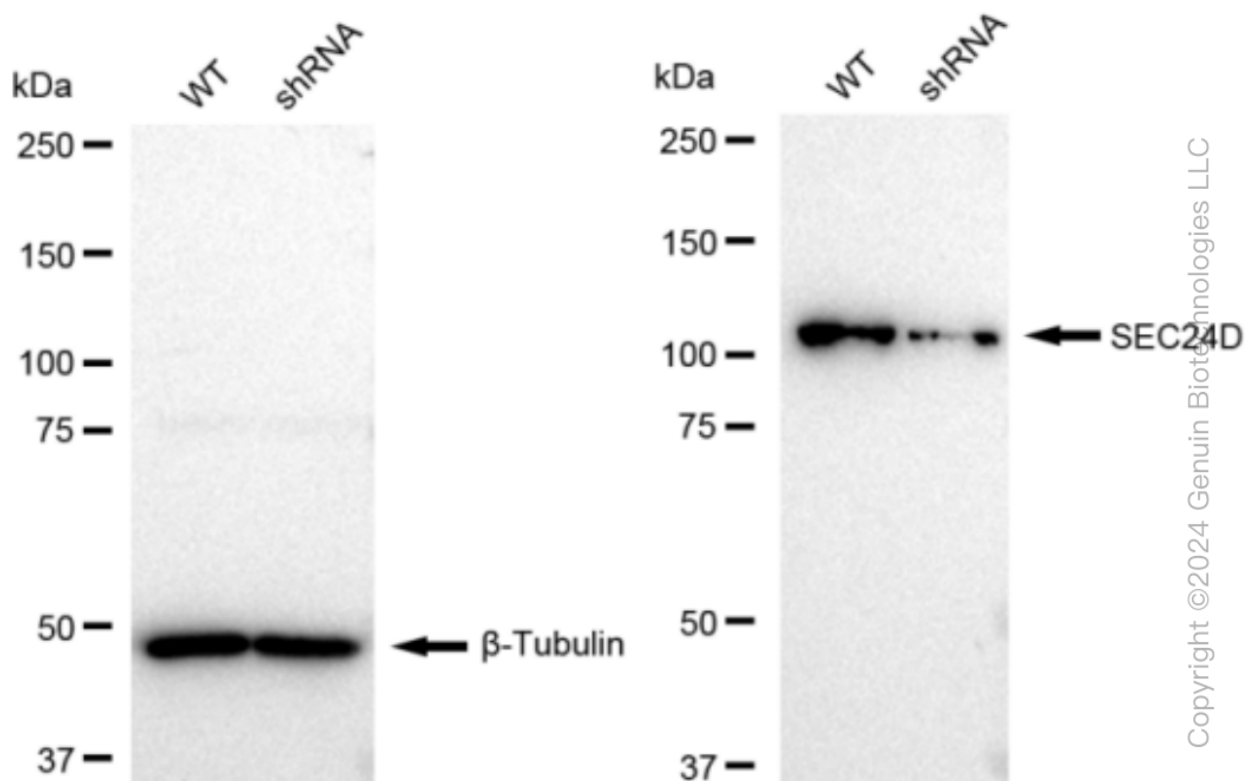
Immunocytochemical staining of C2C12 cells with SEC24D antibody (Cat#61515, 1:1,000). Nuclei were stained blue with DAPI; SEC24D was stained magenta with Alexa Fluor® 647. Images were taken using Leica stellaris 5. Protein abundance based on laser Intensity and smart gain: Medium. Scale bar: 20 μ m.



KD-Validated Anti-SEC24D Recombinant Rabbit Monoclonal Antibody

PAGE 4

Western blotting analysis using anti-SEC24D antibody (Cat#61515). Total cell lysates (30 µg) from various cell lines were loaded and separated by SDS-PAGE. The blot was incubated with anti-SEC24D antibody (Cat#61515, 1:5,000) and HRP-conjugated goat anti-rabbit secondary antibody (Cat#201, 1:20,000) respectively. Image was developed using FeQ™ ECL Substrate Kit (Cat#226).



Western blotting analysis using anti-SEC24D antibody (Cat#61515). SEC24D expression in wild type (WT) and SEC24D shRNA knockdown (KD) HeLa cells with 30 µg of total cell lysates. β-Tubulin serves as a loading control. The blot was incubated with anti-SEC24D antibody (Cat#61515, 1:5,000) and HRP-conjugated goat anti-rabbit secondary antibody (Cat#201, 1:20,000) respectively. Image was developed using FeQ™ ECL Substrate Kit (Cat#226).

SUPPORT

SUPPORT@GENUINBIOTECH.COM
TEL: +1-540-855-7041

ORDERS

SALES@GENUINBIOTECH.COM
FAX: +1-540-855-7041

WWW.GENUINBIOTECH.COM