

# KD-Validated Anti-SMAD5 Recombinant Rabbit Monoclonal Antibody



**Catalog #: 61516**

## Aliases

SMAD Family Member 5; JV5-1; MADH5; Mothers Against Decapentaplegic Homolog; DWFC; MAD, Mothers Against Decapentaplegic Homolog 5 (Drosophila); Mothers Against Decapentaplegic, Drosophila, Homolog Of, 5; SMAD, Mothers Against DPP Homolog 5 (Drosophila) 2; MAD, Mothers Against Decapentaplegic Homolog 5; SMAD, Mothers Against DPP Homolog 5; SMA- And MAD-Related Protein 5; Mothers Against DPP Homolog 5; MAD Homolog 5; SMAD 5; HSmad5; Smad5; Dwfc

## Background

Gene Name: SMAD5

NCBI Gene Entry: [4090](#)

UniProt Entry: [Q99717](#)

## Application Information

Molecular Weight: Predicted, 52 kDa, observed, 52 kDa

Clonality: Rabbit monoclonal antibody

Clone ID: 23GB2910

Species Reactivity: Human, mouse, rat

Applications Tested: Western blotting (WB), flow cytometry (FCM), immunocytochemistry (IC)

## Immunogen

A synthesized peptide derived from human Smad5

## Isotype

Rabbit IgG

## Storage Buffer

Supplied in PBS (pH 7.4) containing 50% glycerol, and 0.02% sodium azide.

## Storage

Store at -20 °C for one year.

## Recommended Dilutions

Western Blotting (WB): 1:1,000-1:5,000

Flow Cytometry (FCM): 1:2,000

Immunocytochemistry (IC): 1:100-1:1,000

---

### SUPPORT

SUPPORT@GENUINBIOTECH.COM  
TEL: +1-540-855-7041

### ORDERS

SALES@GENUINBIOTECH.COM  
FAX: +1-540-855-7041

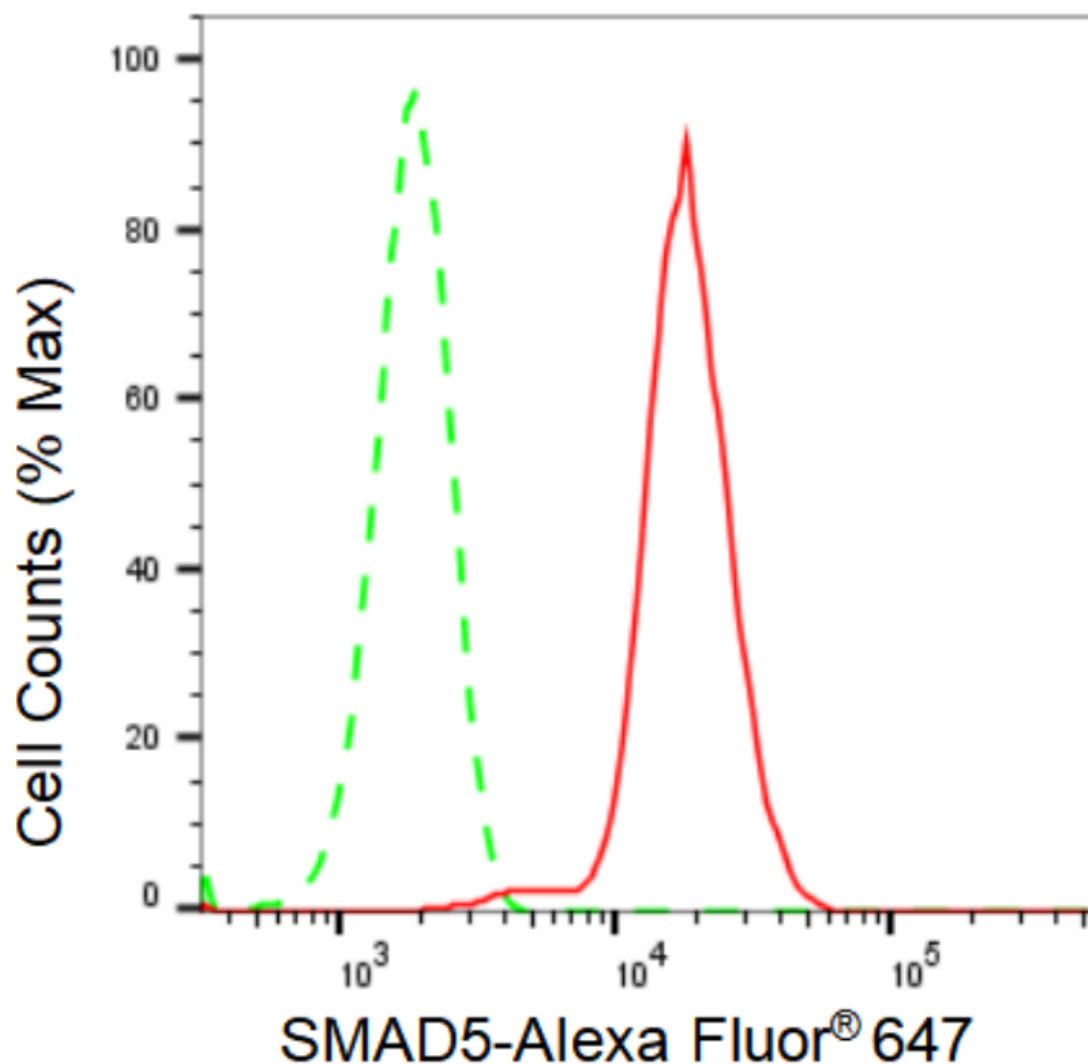
[WWW.GENUINBIOTECH.COM](http://WWW.GENUINBIOTECH.COM)

## KD-Validated Anti-SMAD5 Recombinant Rabbit Monoclonal Antibody

PAGE 2

**Note:** This product is for research use only.

### Validation Data



Copyright ©2024 Genuin Biotechnologies LLC

Flow cytometric analysis of SMAD5 expression in HepG2 cells using SMAD5 antibody (Cat#61516, 1:2,000). Green, isotype control; red, SMAD5.

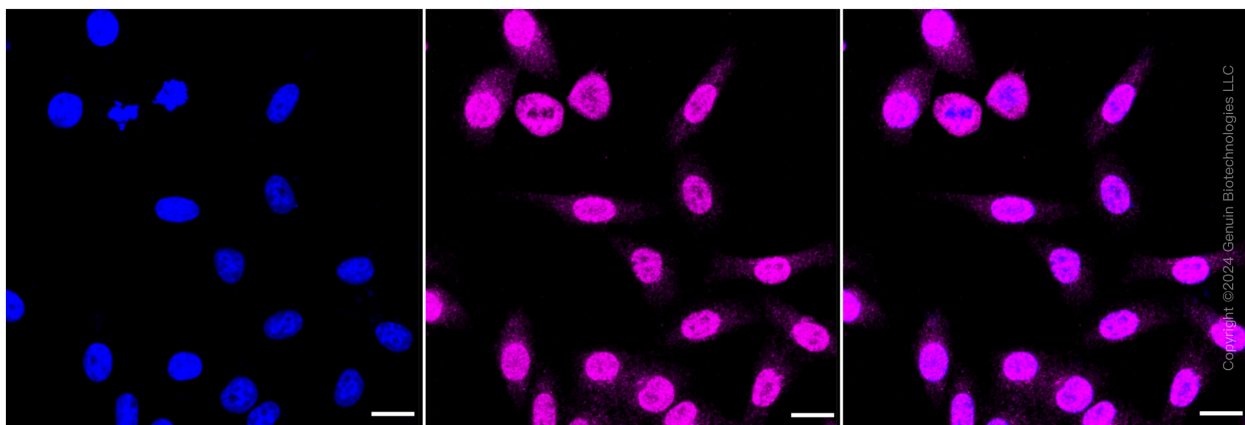
#### SUPPORT

SUPPORT@GENUINBIOTECH.COM  
TEL: +1-540-855-7041

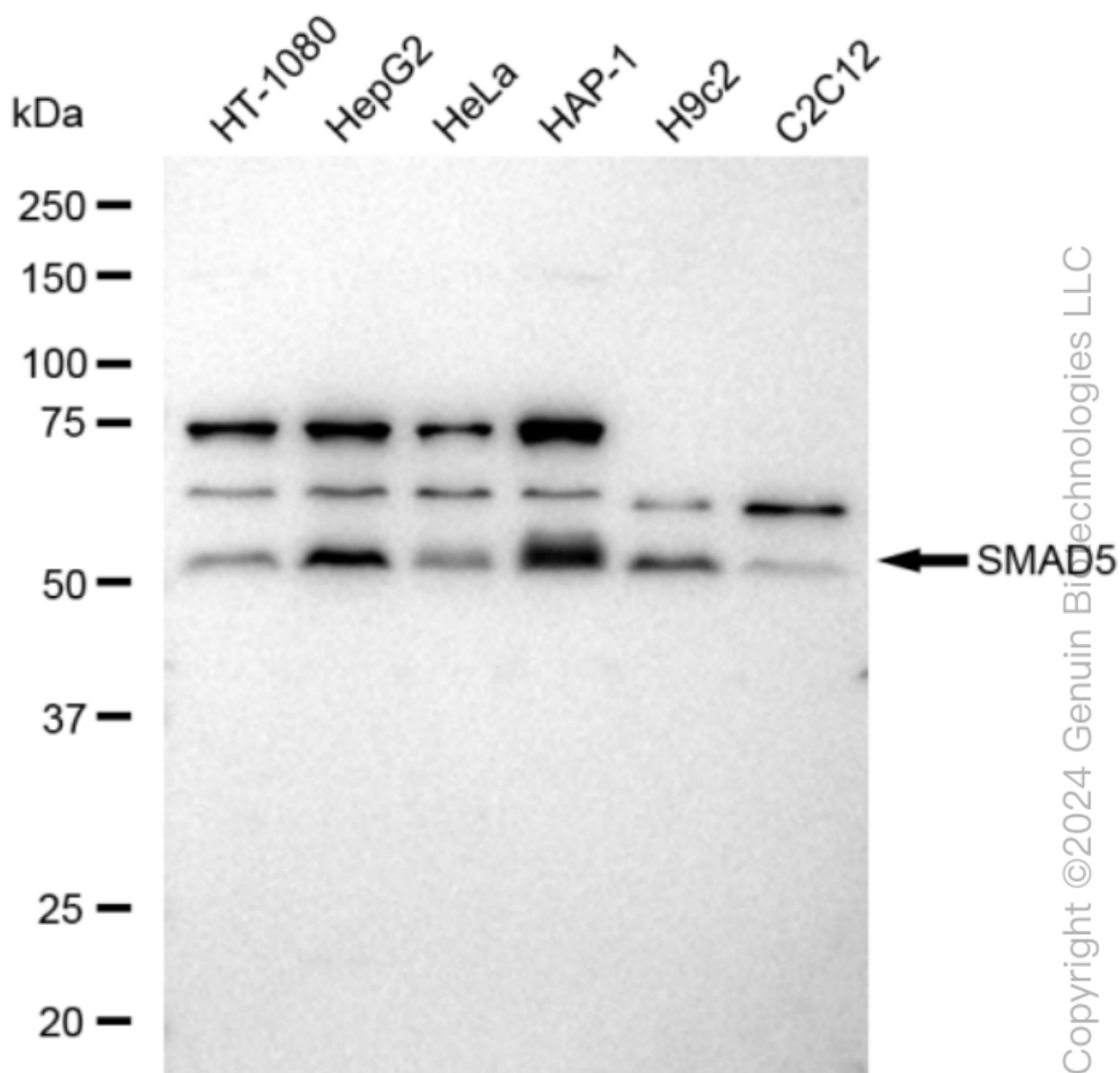
#### ORDERS

SALES@GENUINBIOTECH.COM  
FAX: +1-540-855-7041

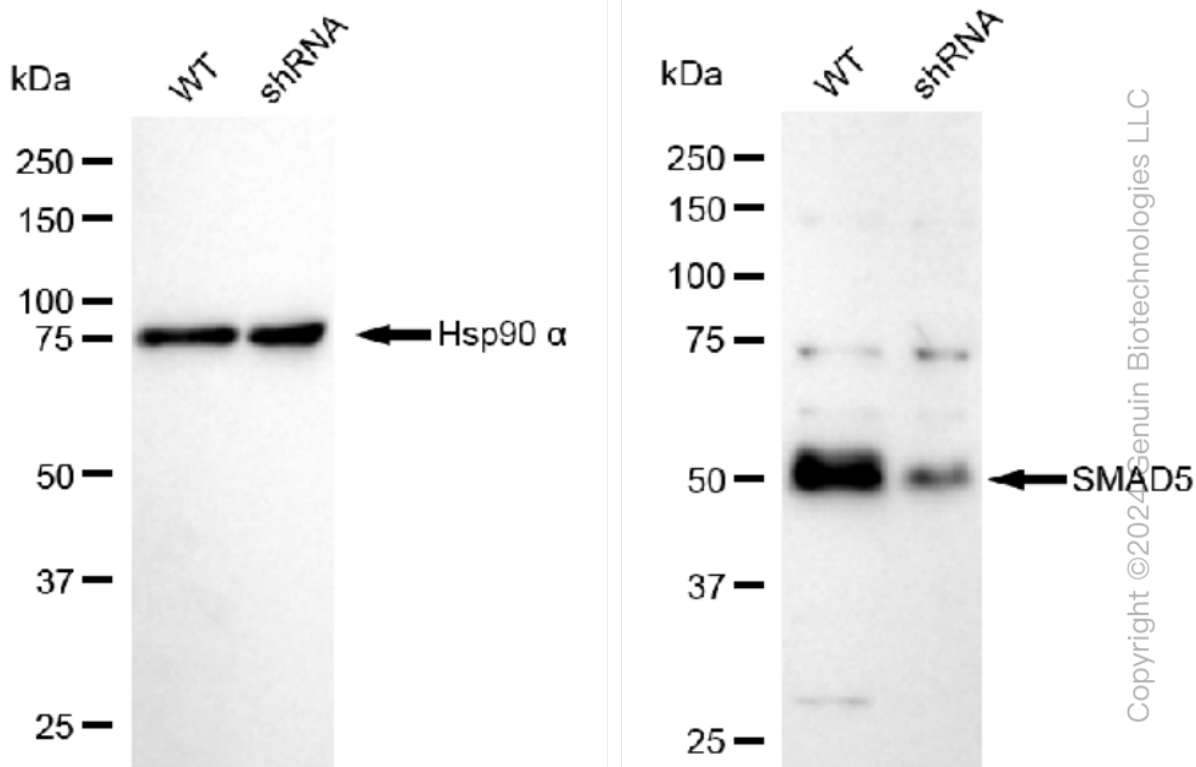
[WWW.GENUINBIOTECH.COM](http://WWW.GENUINBIOTECH.COM)



Immunocytochemical staining of HepG2 cells with SMAD5 antibody (Cat#61516, 1:1,000). Nuclei were stained blue with DAPI; SMAD5 was stained magenta with Alexa Fluor® 647. Images were taken using Leica stellaris 5. Protein abundance based on laser Intensity and smart gain: Medium. Scale bar: 20  $\mu$ m.



Western blotting analysis using anti-SMAD5 antibody (Cat#61516). Total cell lysates (30 µg) from various cell lines were loaded and separated by SDS-PAGE. The blot was incubated with anti-SMAD5 antibody (Cat#61516, 1:5,000) and HRP-conjugated goat anti-rabbit secondary antibody (Cat#201, 1:20,000) respectively. Image was developed using FeQ™ ECL Substrate Kit (Cat#226).



Western blotting analysis using anti-SMAD5 antibody (Cat#61516). SMAD5 expression in wild type (WT) and SMAD5 shRNA knockdown (KD) HeLa cells with 30 µg of total cell lysates. Hsp90 α serves as a loading control. The blot was incubated with anti-SMAD5 antibody (Cat#61516, 1:5,000) and HRP-conjugated goat anti-rabbit secondary antibody (Cat#201, 1:20,000) respectively. Image was developed using FeQ™ ECL Substrate Kit (Cat#226).