

# KD-Validated Anti-Syntaxin binding protein 1 Recombinant Rabbit Monoclonal Antibody



**Catalog #: 61518**

## Aliases

STXBP1; Syntaxin Binding Protein 1; MUNC18-1; Syntaxin-Binding Protein 1; UNC18; Protein Unc-18 Homolog 1; Protein Unc-18 Homolog A; Unc-18A; Unc18-1; HUNC18; N-Sec1; RBSEC1; NSEC1; P67; Neuronal SEC1; RbSec1; UNC18A; NSec1; DEE4

## Background

Gene Name: STXBP1

NCBI Gene Entry: [6812](#)

UniProt Entry: [P61764](#)

## Application Information

Molecular Weight: Predicted, 68 kDa, observed, 68 kDa

Clonality: Rabbit monoclonal antibody

Clone ID: 23GB2570

Species Reactivity: Human, mouse, rat

Applications Tested: Western blotting (WB), flow cytometry (FCM), immunocytochemistry (IC)

## Immunogen

A synthesized peptide derived from human STXBP1

## Isotype

Rabbit IgG

## Storage Buffer

Supplied in PBS (pH 7.4) containing 50% glycerol, and 0.02% sodium azide.

## Storage

Store at -20 °C for one year.

## Recommended Dilutions

Western Blotting (WB): 1:1,000-1:5,000

Flow Cytometry (FCM): 1:2,000

Immunocytochemistry (IC): 1:100-1:1,000

**Note:** This product is for research use only.

---

### SUPPORT

SUPPORT@GENUINBIOTECH.COM  
TEL: +1-540-855-7041

### ORDERS

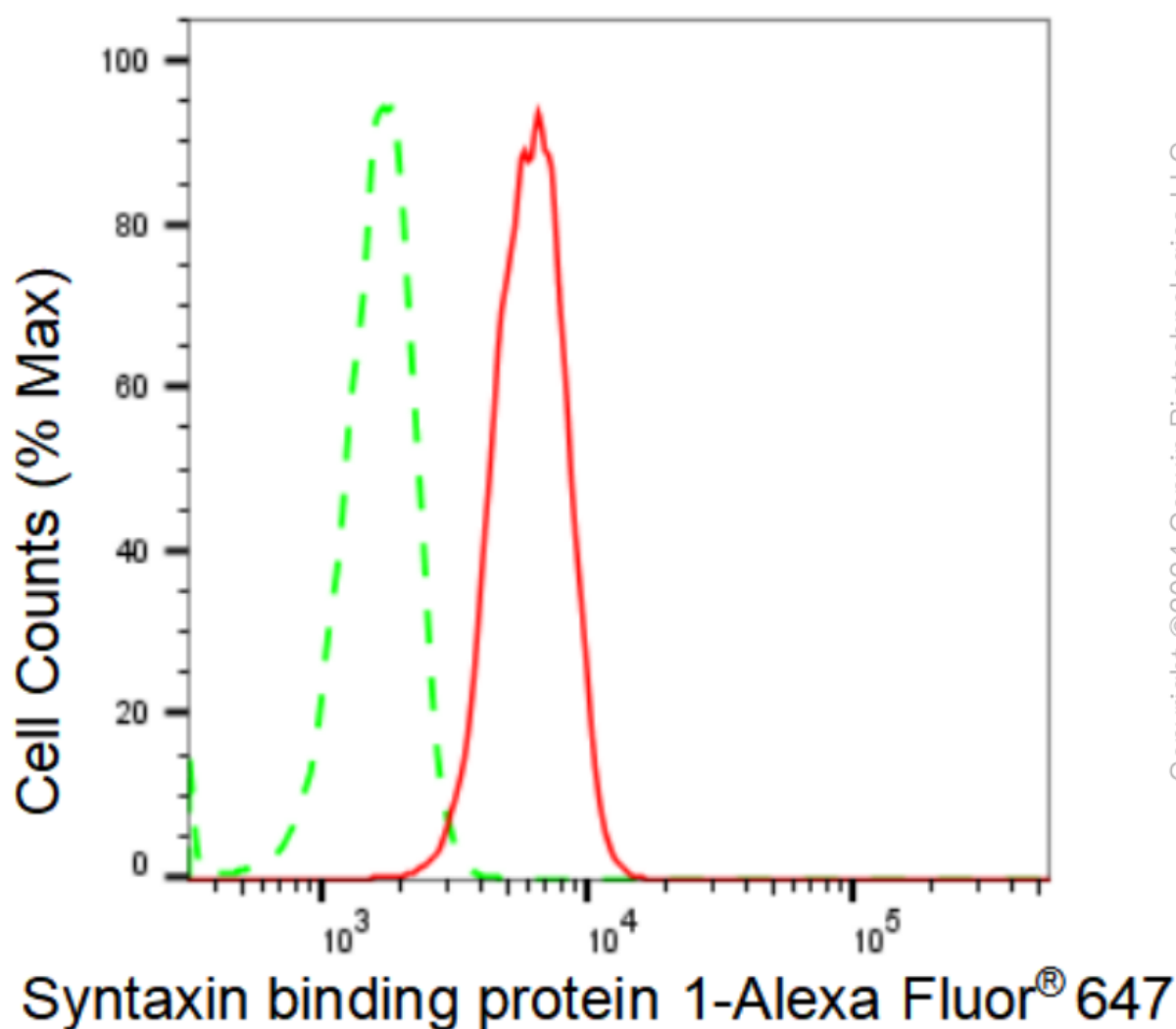
SALES@GENUINBIOTECH.COM  
FAX: +1-540-855-7041

[WWW.GENUINBIOTECH.COM](http://WWW.GENUINBIOTECH.COM)

# KD-Validated Anti-Syntaxin binding protein 1 Recombinant Rabbit Monoclonal Antibody

PAGE 2

## Validation Data



Flow cytometric analysis of Syntaxin binding protein 1 expression in C2C12 cells using Syntaxin binding protein 1 antibody (Cat#61518, 1:2,000). Green, isotype control; red, Syntaxin binding protein 1.

### SUPPORT

SUPPORT@GENUINBIOTECH.COM  
TEL: +1-540-855-7041

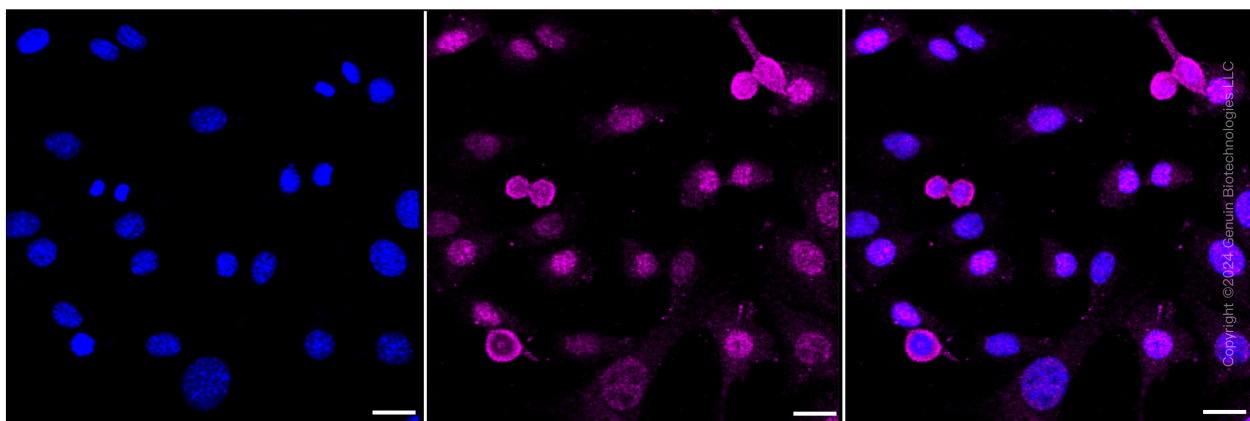
### ORDERS

SALES@GENUINBIOTECH.COM  
FAX: +1-540-855-7041

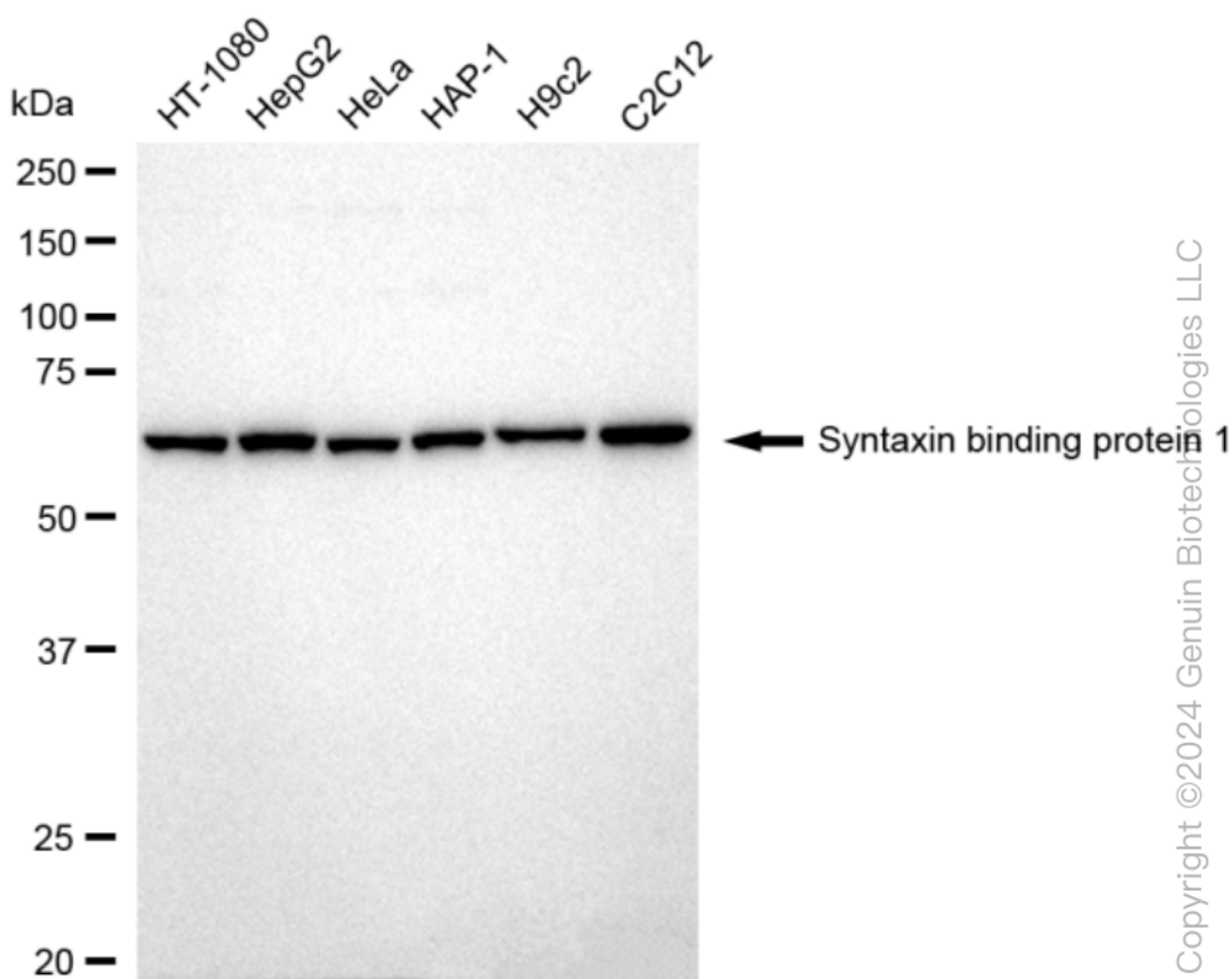
[WWW.GENUINBIOTECH.COM](http://WWW.GENUINBIOTECH.COM)

## KD-Validated Anti-Syntaxin binding protein 1 Recombinant Rabbit Monoclonal Antibody

PAGE 3



Immunocytochemical staining of C2C12 cells with Syntaxin binding protein 1 antibody (Cat#61518, 1:1,000). Nuclei were stained blue with DAPI; Syntaxin binding protein 1 was stained magenta with Alexa Fluor® 647. Images were taken using Leica stellaris 5. Protein abundance based on laser Intensity and smart gain: Medium. Scale bar: 20  $\mu$ m.



Western blotting analysis using anti-Syntaxin binding protein 1 antibody (Cat#61518). Total cell lysates (30  $\mu$ g) from various cell lines were loaded and separated by SDS-PAGE. The blot was

### SUPPORT

SUPPORT@GENUINBIOTECH.COM  
TEL: +1-540-855-7041

### ORDERS

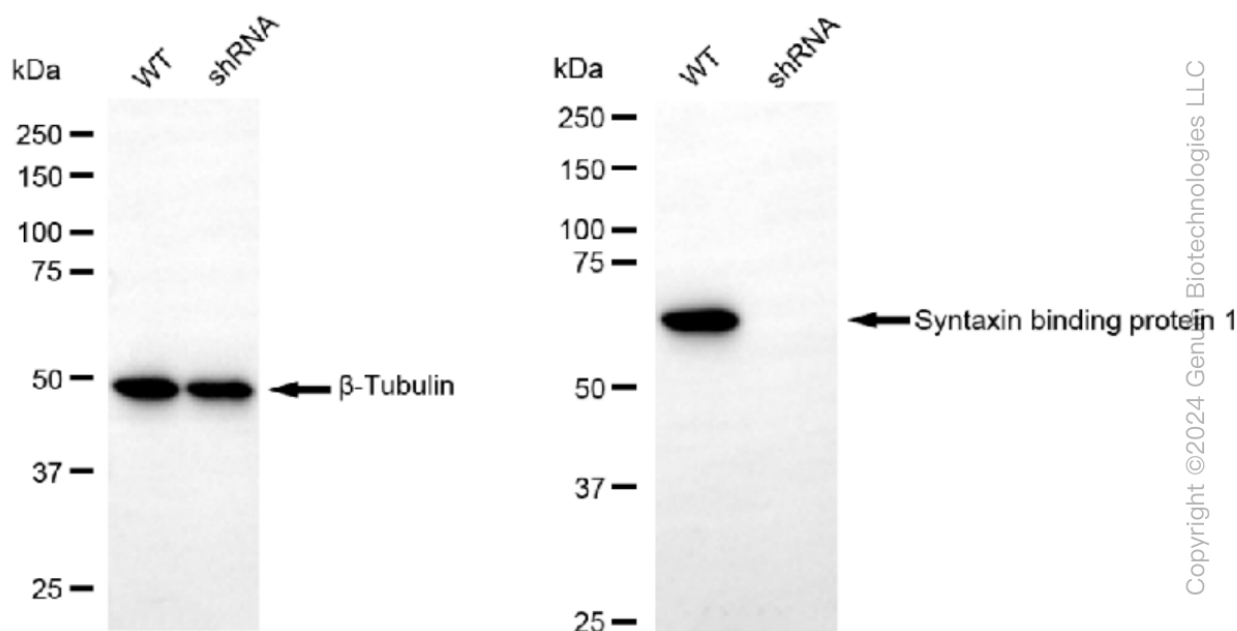
SALES@GENUINBIOTECH.COM  
FAX: +1-540-855-7041

WWW.GENUINBIOTECH.COM

## KD-Validated Anti-Syntaxin binding protein 1 Recombinant Rabbit Monoclonal Antibody

PAGE 4

incubated with anti-Syntaxin binding protein 1 antibody (Cat#61518, 1:5,000) and HRP-conjugated goat anti-rabbit secondary antibody (Cat#201, 1:20,000) respectively. Image was developed using FeQ™ ECL Substrate Kit (Cat#226).



Western blotting analysis using anti-Syntaxin binding protein 1 antibody (Cat#61518). Syntaxin binding protein 1 expression in wild type (WT) and syntaxin binding protein 1 shRNA knockdown (KD) HeLa cells with 30  $\mu$ g of total cell lysates.  $\beta$ -Tubulin serves as a loading control. The blot was incubated with anti-Syntaxin binding protein 1 antibody (Cat#61518, 1:5000) and HRP-conjugated goat anti-rabbit secondary antibody (Cat#201, 1:20000) respectively. Image was developed using FeQ™ ECL Substrate Kit (Cat#226).

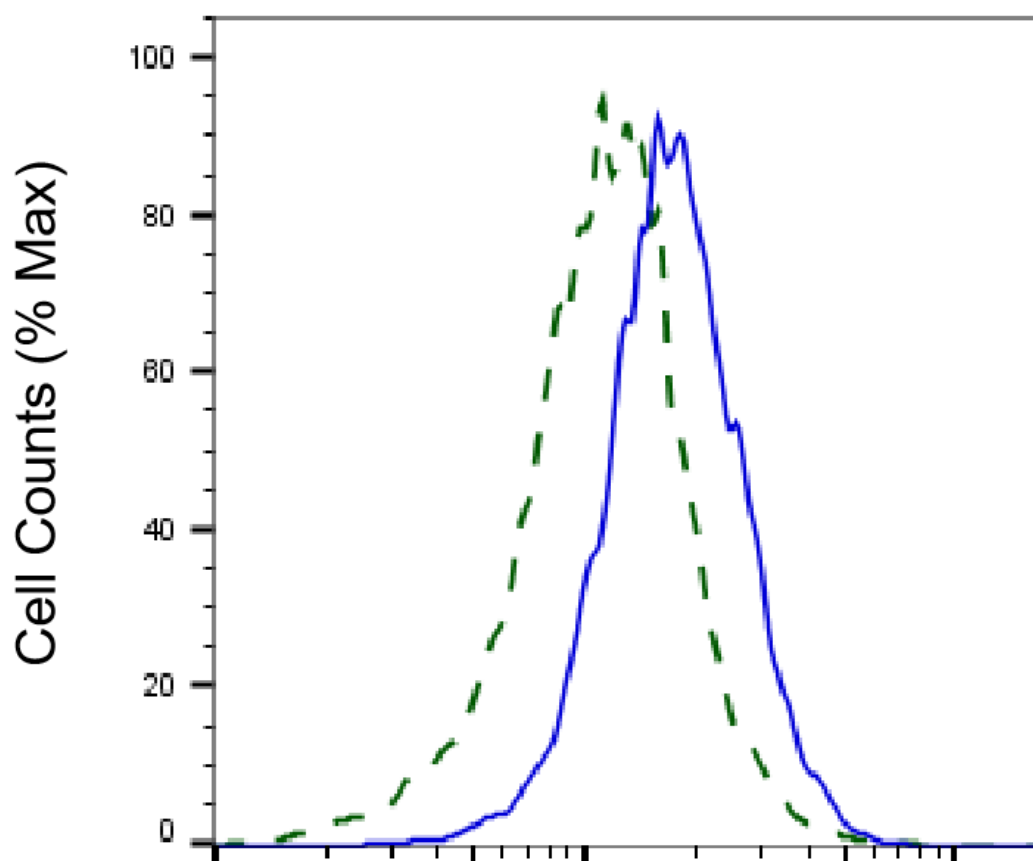
### SUPPORT

SUPPORT@GENUINBIOTECH.COM  
TEL: +1-540-855-7041

### ORDERS

SALES@GENUINBIOTECH.COM  
FAX: +1-540-855-7041

[WWW.GENUINBIOTECH.COM](http://WWW.GENUINBIOTECH.COM)



Copyright ©2025 Genuin Biotechnologies LLC

## Syntaxin binding protein 1-Alexa Fluor® 647

Validation of Syntaxin binding protein 1 knockdown using flow cytometry. Wild-type(WT, Blue) and knockdown(KD, Green) HeLa cells were stained with anti-Syntaxin binding protein 1 antibody (Cat#61518, 1:2,000) and analyzed using BD flow cytometer.