

KD-Validated Anti-TEAD1 Recombinant Rabbit Monoclonal Antibody



Catalog #: 61520

Aliases

TEAD1; TEA Domain Transcription Factor 1; TEF-1; TCF13; TEA Domain Family Member 1 (SV40 Transcriptional Enhancer Factor); Transcriptional Enhancer Factor TEF-1; Transcriptional Enhancer Factor 1; Transcription Factor 13; Protein GT-IIC; NTEF-1; TCF-13; TEAD-1; AA; Atrophia Areata, Peripapillary Chorioretinal Degeneration; TEA Domain Family Member 1; REF1; TEF1

Background

Gene Name: TEAD1
NCBI Gene Entry: [7003](#)
UniProt Entry: [P28347](#)

Application Information

Molecular Weight: Predicted, 48 kDa, observed, 52 kDa
Clonality: Rabbit monoclonal antibody
Clone ID: 23GB2800
Species Reactivity: Human, mouse, rat
Applications Tested: Western blotting (WB), flow cytometry (FCM), immunocytochemistry (IC)

Immunogen

A synthesized peptide derived from human TEAD1

Isotype

Rabbit IgG

Storage Buffer

Supplied in PBS (pH 7.4) containing 50% glycerol, and 0.02% sodium azide.

Storage

Store at -20 °C for one year.

Recommended Dilutions

Western Blotting (WB): 1:1,000-1:5,000
Flow Cytometry (FCM): 1:2,000
Immunocytochemistry (IC): 1:100-1:1,000

SUPPORT

SUPPORT@GENUINBIOTECH.COM
TEL: +1-540-855-7041

ORDERS

SALES@GENUINBIOTECH.COM
FAX: +1-540-855-7041

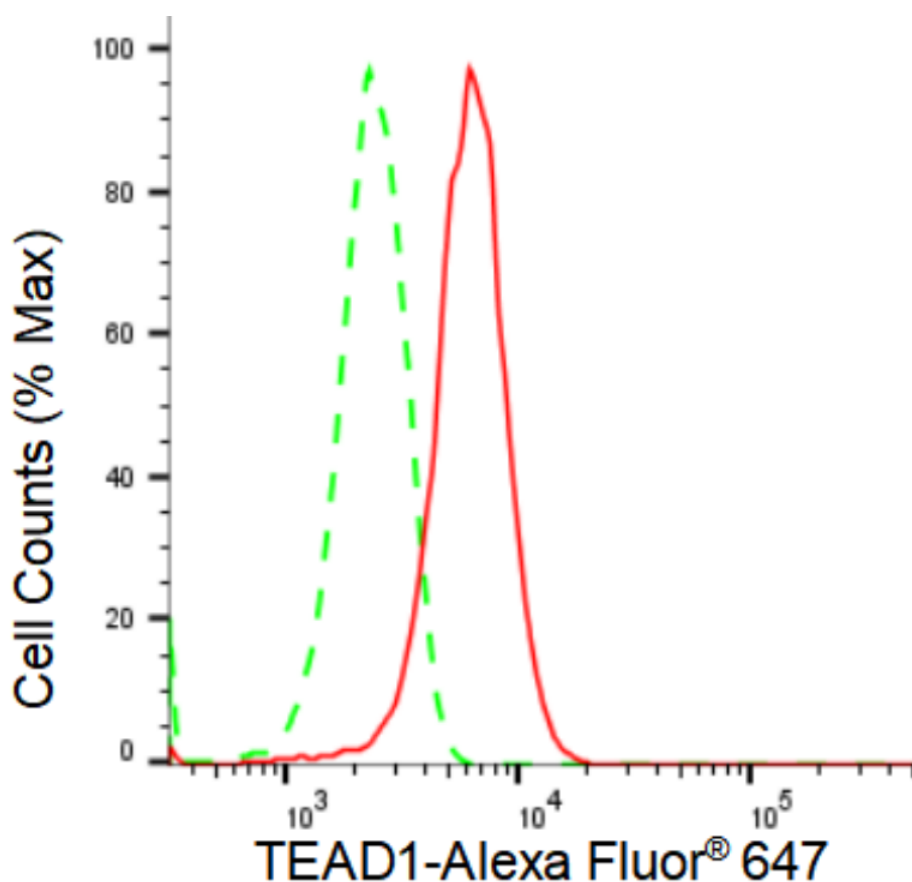
WWW.GENUINBIOTECH.COM

KD-Validated Anti-TEAD1 Recombinant Rabbit Monoclonal Antibody

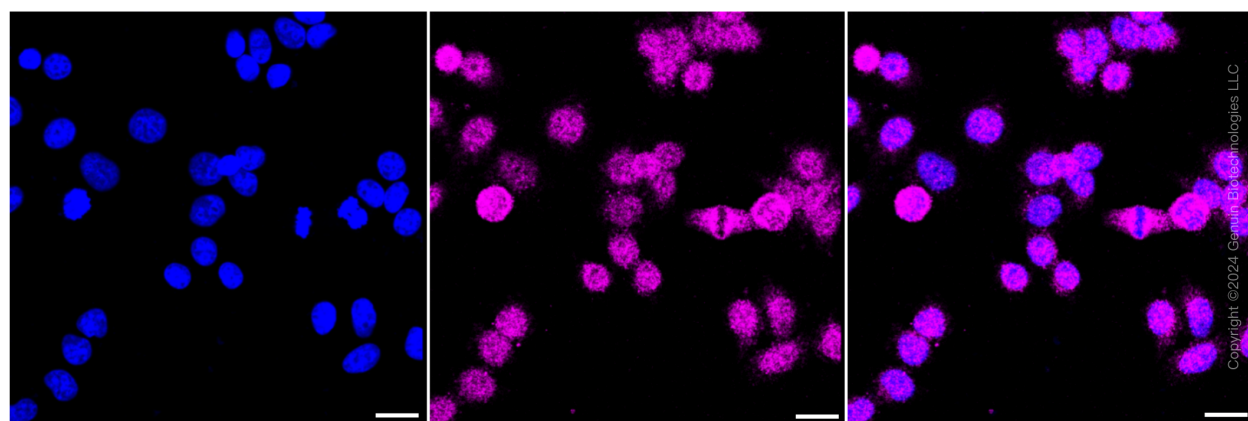
PAGE 2

Note: This product is for research use only.

Validation Data



Copyright ©2024 Genuin Biotechnologies LLC



Copyright ©2024 Genuin Biotechnologies LLC

SUPPORT

SUPPORT@GENUINBIOTECH.COM
TEL: +1-540-855-7041

ORDERS

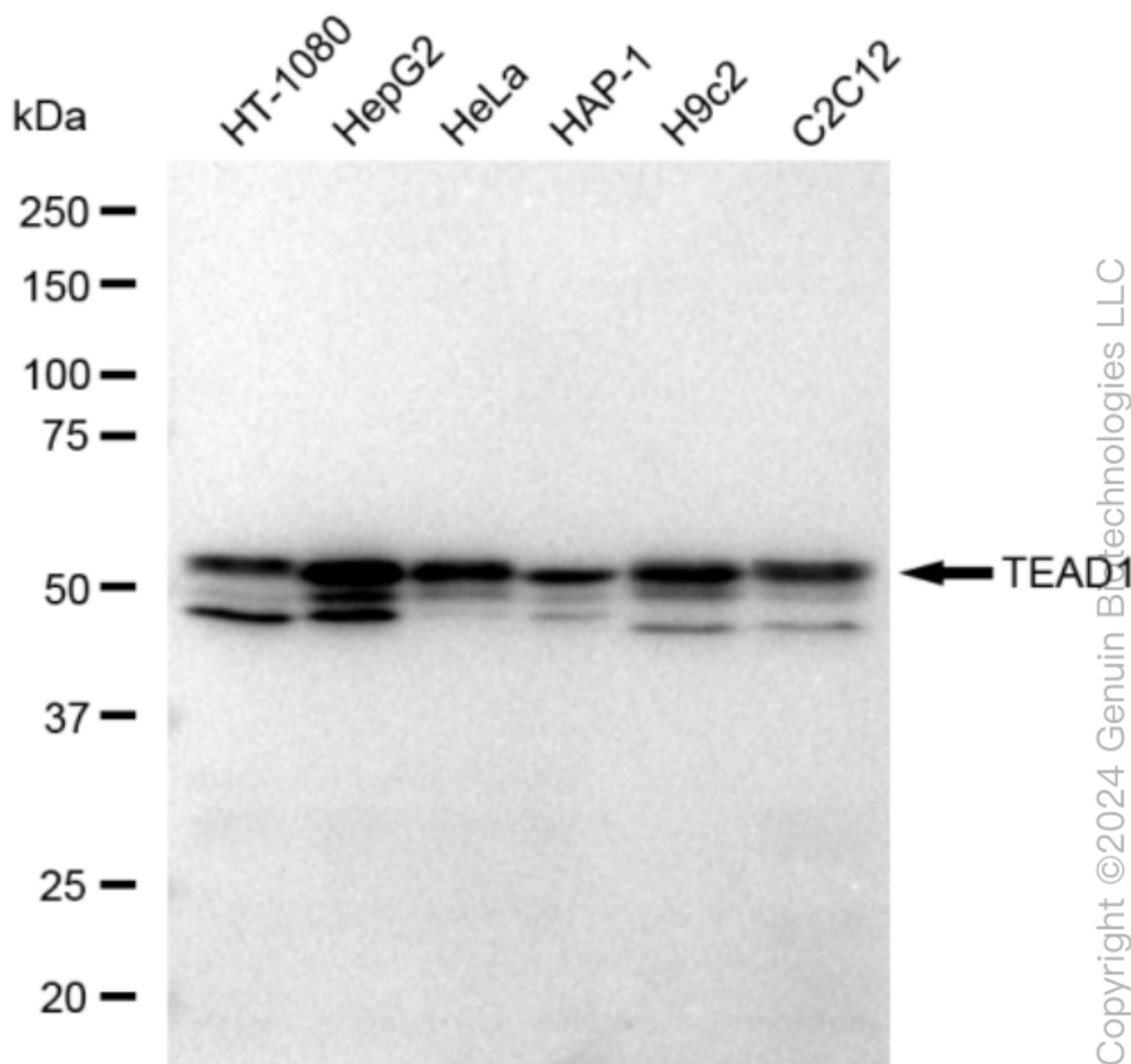
SALES@GENUINBIOTECH.COM
FAX: +1-540-855-7041

WWW.GENUINBIOTECH.COM

KD-Validated Anti-TEAD1 Recombinant Rabbit Monoclonal Antibody

PAGE 3

gain: Medium. Scale bar: 20 μ m.



Western blotting analysis using anti-TEAD1 antibody (Cat#61520). Total cell lysates (30 μ g) from various cell lines were loaded and separated by SDS-PAGE. The blot was incubated with anti-TEAD1 antibody (Cat#61520, 1:5,000) and HRP-conjugated goat anti-rabbit secondary antibody (Cat#201, 1:20,000) respectively. Image was developed using FeQTM ECL Substrate Kit (Cat#226).

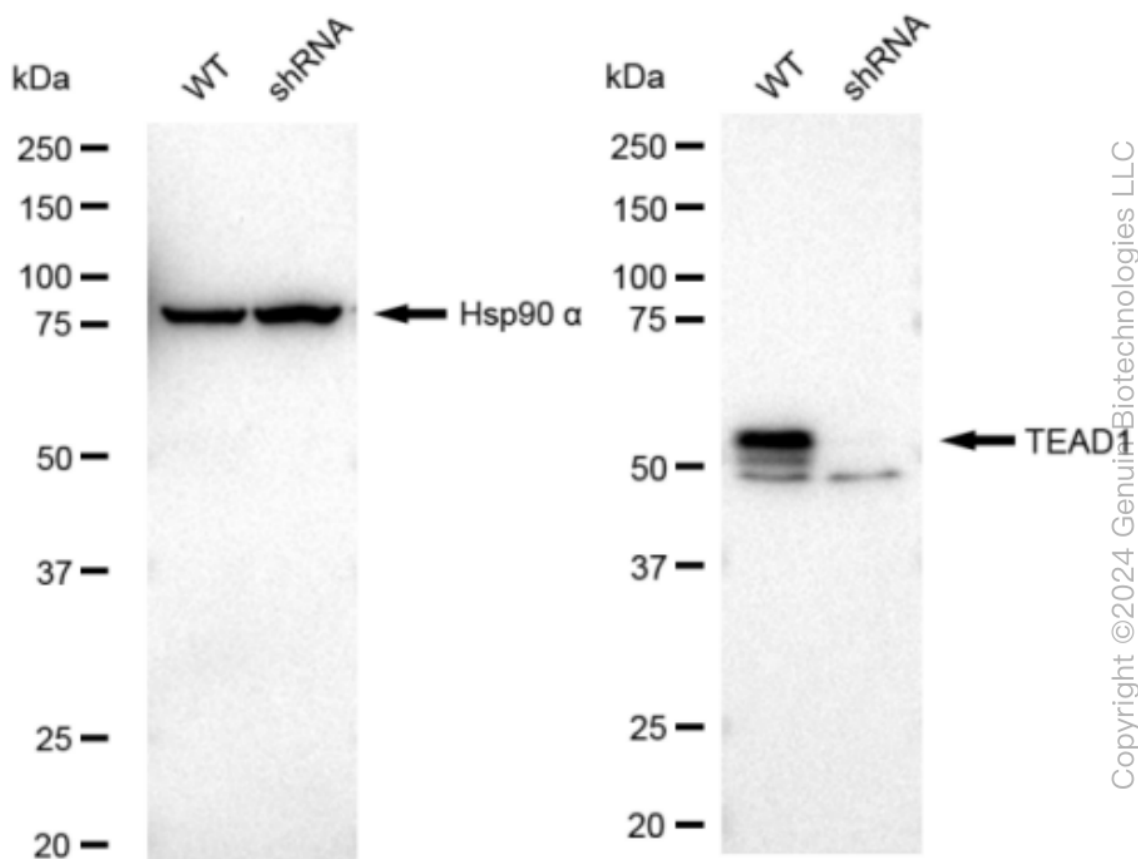
SUPPORT

SUPPORT@GENUINBIOTECH.COM
TEL: +1-540-855-7041

ORDERS

SALES@GENUINBIOTECH.COM
FAX: +1-540-855-7041

WWW.GENUINBIOTECH.COM



Western blotting analysis using anti-TEAD1 antibody (Cat#61520). TEAD1 expression in wild type (WT) and TEAD1 shRNA knockdown (KD) HeLa cells with 30 µg of total cell lysates. Hsp90 α serves as a loading control. The blot was incubated with anti-TEAD1 antibody (Cat#61520, 1:5,000) and HRP-conjugated goat anti-rabbit secondary antibody (Cat#201, 1:20,000) respectively. Image was developed using FeQ™ ECL Substrate Kit (Cat#226).