

KD-Validated Anti-RuvB Like AAA ATPase 1 Recombinant Rabbit Monoclonal Antibody



Catalog #: 61521

Aliases

RuvB Like AAA ATPase 1; NMP238; TIP49a; INO80H; TIP49; INO80 Complex Subunit H; Pontin52; ECP54; RVB1; TIH1; 49 KDa TATA Box-Binding Protein-Interacting Protein; 54 KDa Erythrocyte Cytosolic Protein; TIP60-Associated Protein 54-Alpha; 49 KDa TBP-Interacting Protein; RuvB (E Coli Homolog)-Like 1; Nuclear Matrix Protein 238; RuvB-Like AAA ATPase; RuvB-Like 1; TAP54-Alpha; Pontin 52; NMP 238; Pontin; ECP-54; TATA Binding Protein Interacting Protein 49 KDa; Epididymis Secretory Sperm Binding Protein; RuvB-Like AAA ATPase 1; RuvB-Like 1 (E. Coli); EC 3.6.4.12; EC 3.6.1; TIP49A

Background

Gene Name: RUVBL1

NCBI Gene Entry: [8607](#)

UniProt Entry: [Q9Y265](#)

Application Information

Molecular Weight: Predicted, 50 kDa; observed, 50 kDa

Clonality: Rabbit monoclonal antibody

Clone ID: 25GB2630

Species Reactivity: Human, mouse, rat

Applications Tested: Western blotting (WB), flow cytometry (FCM)

Immunogen

A synthesized peptide derived from human TIP49A

Isotype

Rabbit IgG

Storage Buffer

Supplied in PBS (pH 7.4) containing 50% glycerol, and 0.02% sodium azide.

Storage

Store at -20 °C for one year.

Recommended Dilutions

Western blotting (WB): 1:1,000-1:5,000

Flow Cytometry (FCM): 1:2,000

SUPPORT

SUPPORT@GENUINBIOTECH.COM
TEL: +1-540-855-7041

ORDERS

SALES@GENUINBIOTECH.COM
FAX: +1-540-855-7041

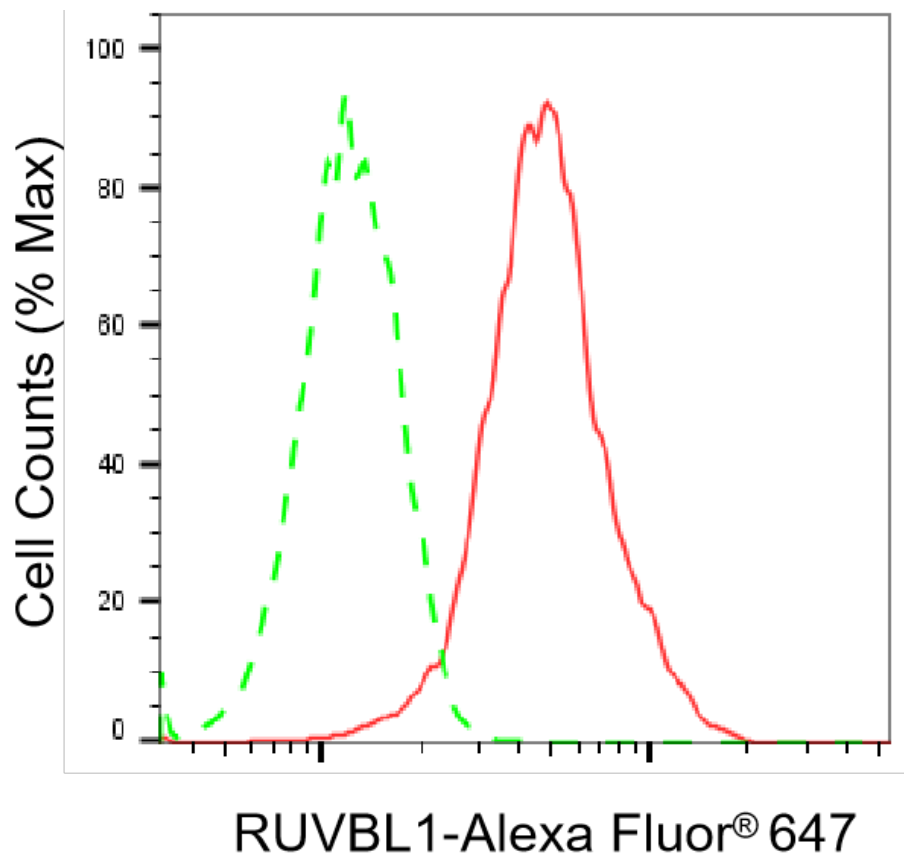
WWW.GENUINBIOTECH.COM

KD-Validated Anti-RuvB Like AAA ATPase 1 Recombinant Rabbit Monoclonal Antibody

PAGE 2

Note: This product is for research use only.

Validation Data



Copyright ©2025 Genuin Biotechnologies LLC

Flow cytometric analysis of RUVBL1 expression in HepG2 cells using anti-RUVBL1 antibody (Cat#61521, 1:2,000). Green, isotype control; red, RUVBL1.

SUPPORT

SUPPORT@GENUINBIOTECH.COM
TEL: +1-540-855-7041

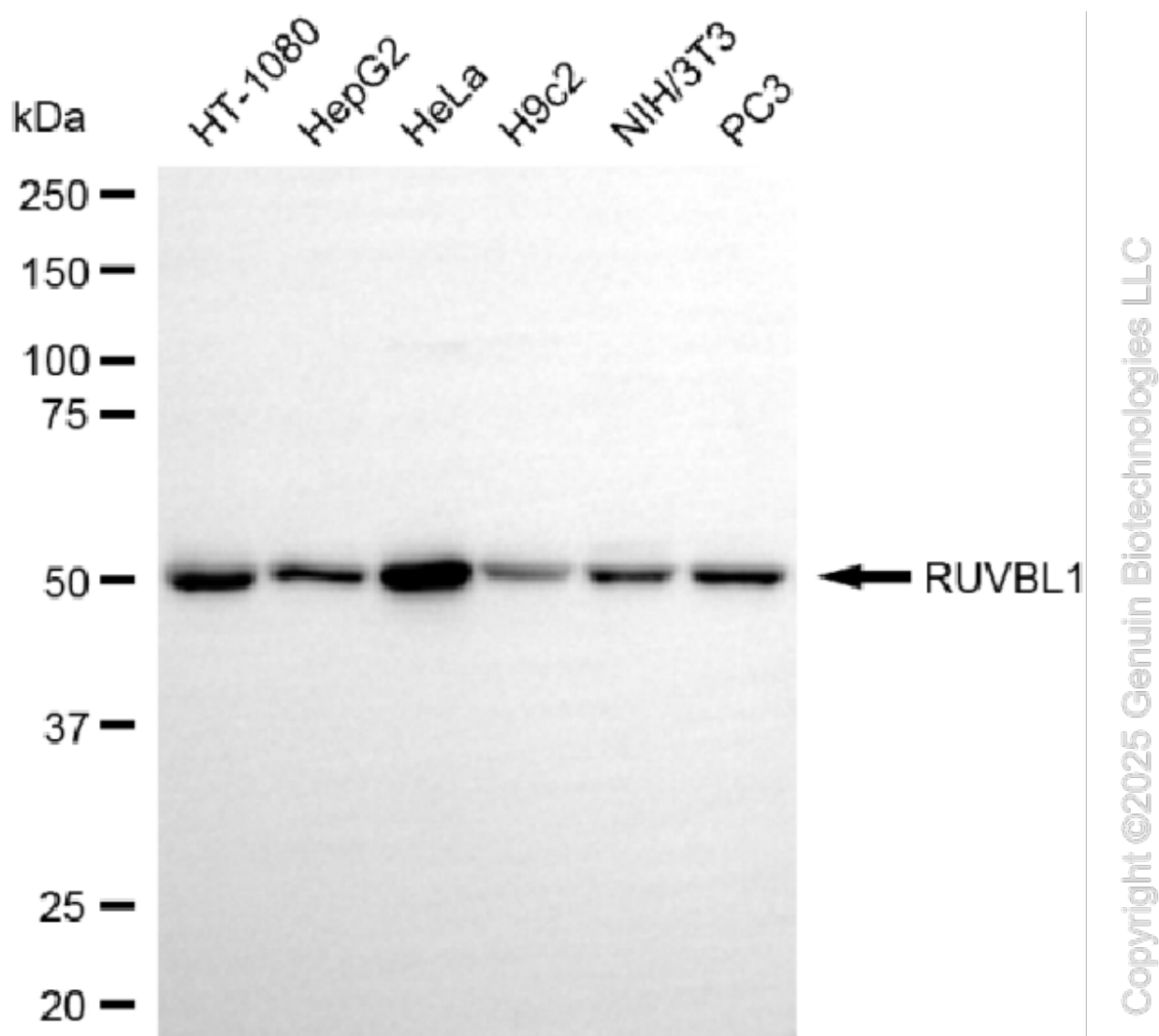
ORDERS

SALES@GENUINBIOTECH.COM
FAX: +1-540-855-7041

WWW.GENUINBIOTECH.COM

KD-Validated Anti-RuvB Like AAA ATPase 1 Recombinant Rabbit Monoclonal Antibody

PAGE 3



Western blotting analysis using anti-RUVBL1 antibody (Cat#61521). Total cell lysates (30 µg) from various cell lines were loaded and separated by SDS-PAGE. The blot was incubated with anti-RUVBL1 antibody (Cat#61521, 1:5,000) and HRP-conjugated goat anti-rabbit secondary antibody (Cat#201, 1:20,000) respectively. Image was developed using FeQ™ ECL Substrate Kit (Cat#226).

SUPPORT

SUPPORT@GENUINBIOTECH.COM
TEL: +1-540-855-7041

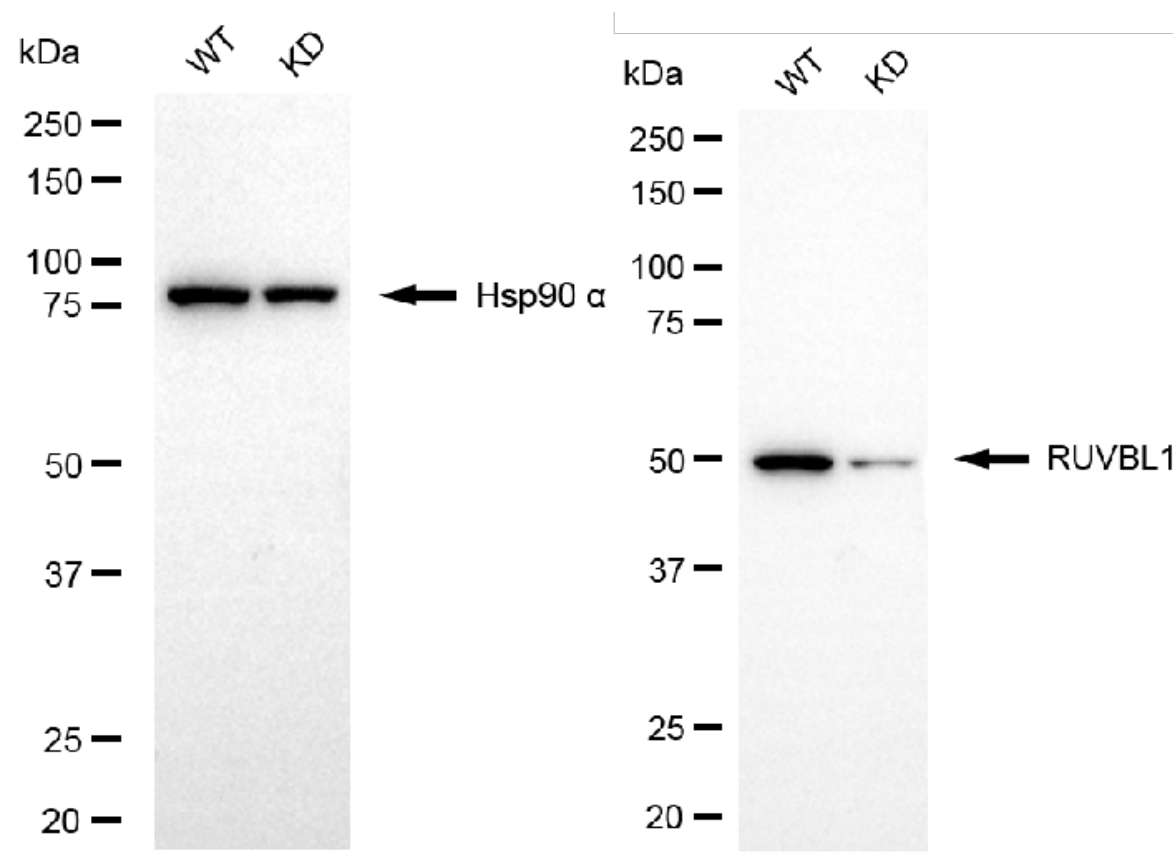
ORDERS

SALES@GENUINBIOTECH.COM
FAX: +1-540-855-7041

WWW.GENUINBIOTECH.COM

KD-Validated Anti-RuvB Like AAA ATPase 1 Recombinant Rabbit Monoclonal Antibody

PAGE 4



Copyright ©2025 Genuin Biotechnologies LLC

Western blotting analysis using anti-RUVBL1 antibody (Cat#61521). RUVBL1 expression in wild-type (WT) and RUVBL1 knockdown (KD) HSHC cells with 20 µg of total cell lysates. Hsp90 α serves as a loading control. The blot was incubated with anti-RUVBL1 antibody (Cat#61521, 1:5,000) and HRP-conjugated goat anti-rabbit secondary antibody (Cat#201, 1:20,000) respectively. Image was developed using NaQ™ ECL Substrate Kit (Cat#716).

SUPPORT

SUPPORT@GENUINBIOTECH.COM
TEL: +1-540-855-7041

ORDERS

SALES@GENUINBIOTECH.COM
FAX: +1-540-855-7041

WWW.GENUINBIOTECH.COM