

# KD-Validated Anti-TEAD1 Recombinant Rabbit Monoclonal Antibody



**Catalog #: 61522**

## Aliases

TEAD1; TEA Domain Transcription Factor 1; TEF-1; TCF13; TEA Domain Family Member 1 (SV40 Transcriptional Enhancer Factor); Transcriptional Enhancer Factor TEF-1; Transcriptional Enhancer Factor 1; Transcription Factor 13; Protein GT-IIC; NTEF-1; TCF-13; TEAD-1; AA; Atrophia Areata, Peripapillary Chorioretinal Degeneration; TEA Domain Family Member 1; REF1; TEF1

## Background

Gene Name: TEAD1  
NCBI Gene Entry: [7003](#)  
UniProt Entry: [P28347](#)

## Application Information

Molecular Weight: Predicted, 48 kDa, observed, 52 kDa  
Clonality: Rabbit monoclonal antibody  
Clone ID: 23GB2795  
Species Reactivity: Human, mouse, rat  
Applications Tested: Western blotting (WB), flow cytometry (FCM), immunocytochemistry (IC)

## Immunogen

A synthesized peptide derived from human TEAD1

## Isotype

Rabbit IgG

## Storage Buffer

Supplied in PBS (pH 7.4) containing 50% glycerol, and 0.02% sodium azide.

## Storage

Store at -20 °C for one year.

## Recommended Dilutions

Western Blotting (WB): 1:1,000-1:5,000  
Flow Cytometry (FCM): 1:2,000  
Immunocytochemistry (IC): 1:100-1:1,000

---

### SUPPORT

SUPPORT@GENUINBIOTECH.COM  
TEL: +1-540-855-7041

### ORDERS

SALES@GENUINBIOTECH.COM  
FAX: +1-540-855-7041

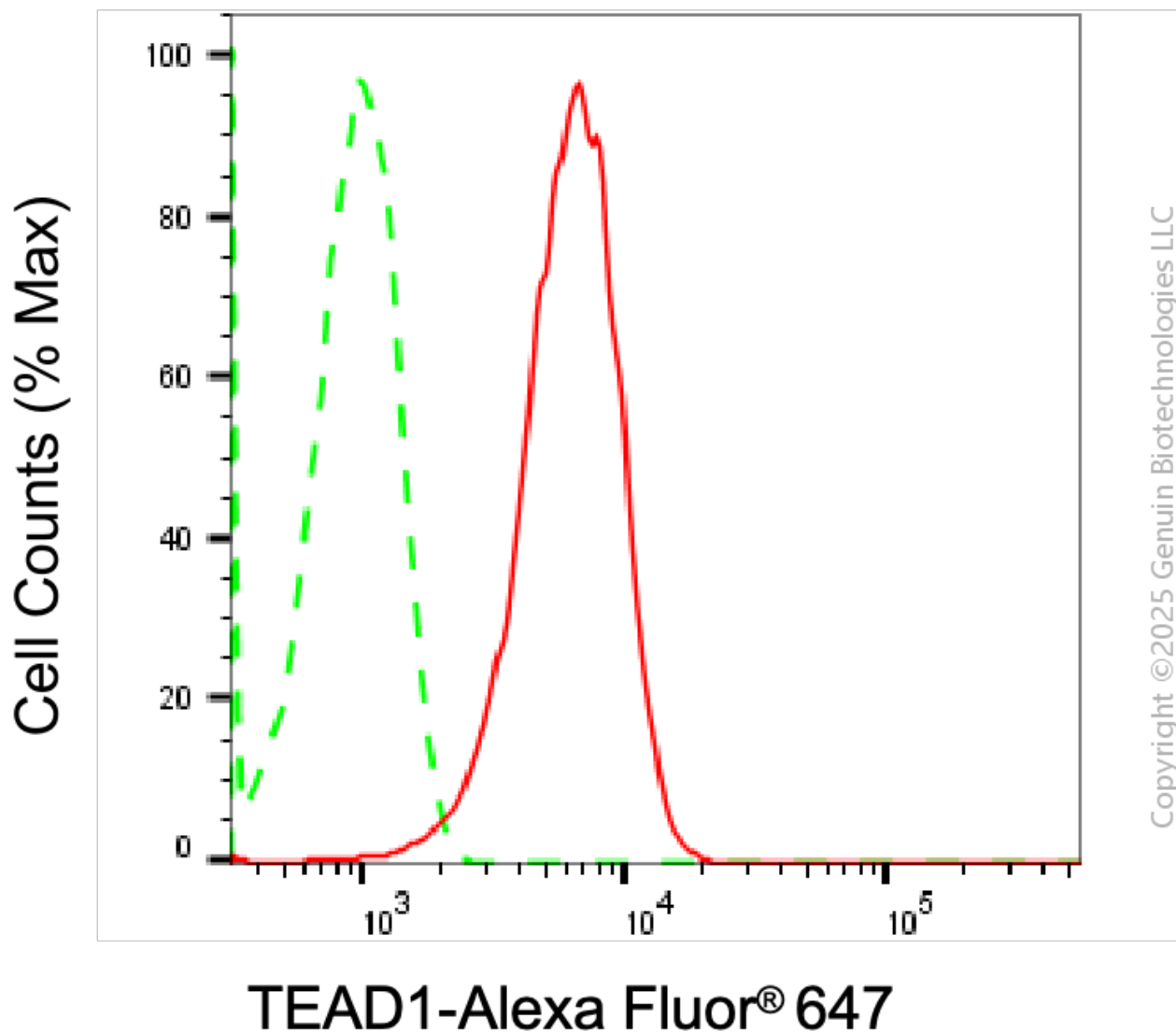
[WWW.GENUINBIOTECH.COM](http://WWW.GENUINBIOTECH.COM)

# KD-Validated Anti-TEAD1 Recombinant Rabbit Monoclonal Antibody

PAGE 2

**Note:** This product is for research use only.

## Validation Data



Flow cytometric analysis of TEAD1 expression in HepG2 cells using anti-TEAD1 antibody (Cat#61522, 1  $\mu$ g/2000). Green, isotype control; red, TEAD1.

### SUPPORT

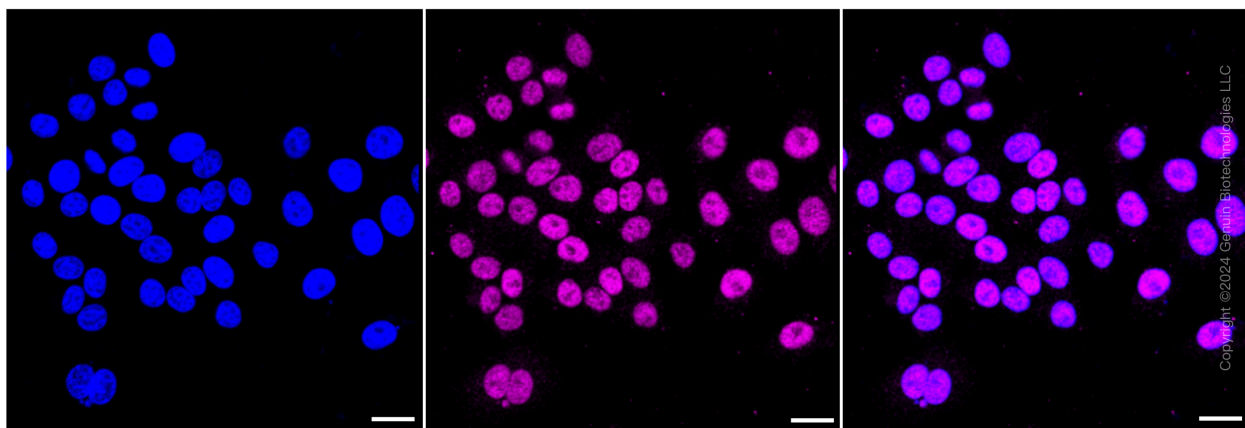
SUPPORT@GENUINBIOTECH.COM  
TEL: +1-540-855-7041

### ORDERS

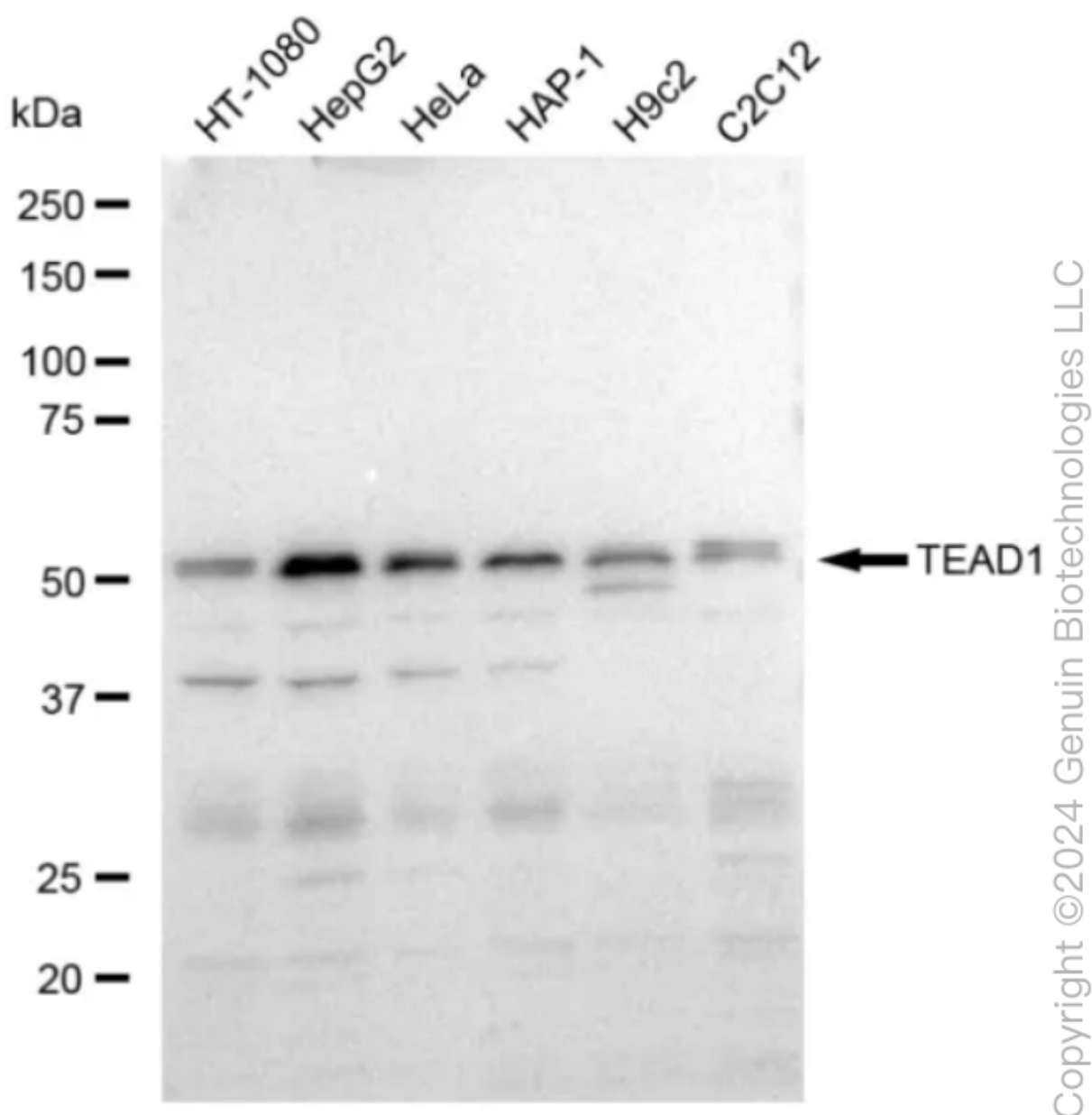
SALES@GENUINBIOTECH.COM  
FAX: +1-540-855-7041

[WWW.GENUINBIOTECH.COM](http://WWW.GENUINBIOTECH.COM)

Copyright ©2025 Genuin Biotechnologies LLC



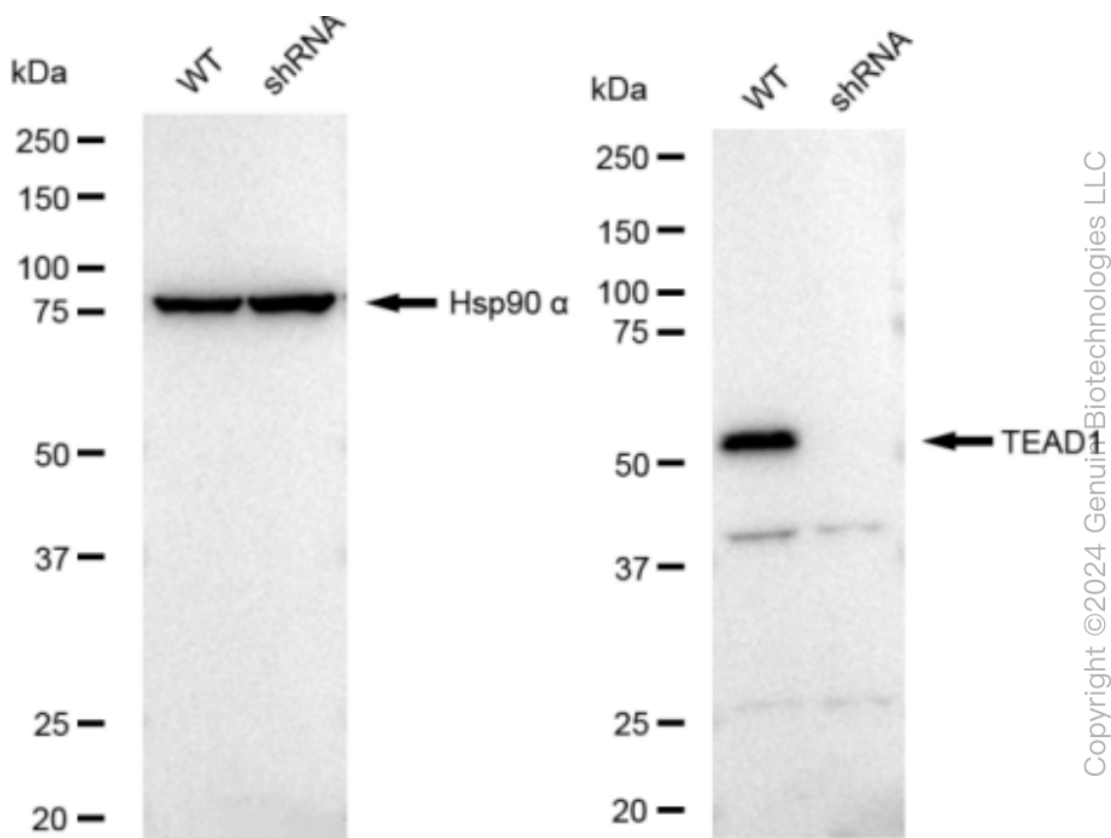
Immunocytochemical staining of HepG2 cells with TEAD1 antibody (Cat#61522, 1:1,000). Nuclei were stained blue with DAPI; TEAD1 was stained magenta with Alexa Fluor® 647. Images were taken using Leica stellaris 5. Protein abundance based on laser Intensity and smart gain: Medium. Scale bar: 20  $\mu$ m.



Western blotting analysis using anti-TEAD1 antibody (Cat#61522). Total cell lysates (30 µg) from various cell lines were loaded and separated by SDS-PAGE. The blot was incubated with anti-TEAD1 antibody (Cat#61522, 1:5,000) and HRP-conjugated goat anti-rabbit secondary antibody (Cat#201, 1:20,000) respectively. Image was developed using FeQ™ ECL Substrate Kit (Cat#226).

## KD-Validated Anti-TEAD1 Recombinant Rabbit Monoclonal Antibody

PAGE 5



Western blotting analysis using anti-TEAD1 antibody (Cat#61522). TEAD1 expression in wild type (WT) and TEAD1 shRNA knockdown (KD) HeLa cells with 30 µg of total cell lysates. Hsp90 α serves as a loading control. The blot was incubated with anti-TEAD1 antibody (Cat#61522, 1:5,000) and HRP-conjugated goat anti-rabbit secondary antibody (Cat#201, 1:20,000) respectively. Image was developed using FeQ™ ECL Substrate Kit (Cat#226).

### SUPPORT

SUPPORT@GENUINBIOTECH.COM  
TEL: +1-540-855-7041

### ORDERS

SALES@GENUINBIOTECH.COM  
FAX: +1-540-855-7041

[WWW.GENUINBIOTECH.COM](http://WWW.GENUINBIOTECH.COM)