

KD-Validated Anti-Wnt family member 5A Recombinant Rabbit Monoclonal Antibody



Catalog #: 61523

Aliases

WNT5A; Wnt Family Member 5A; HWNT5A; Wingless-Type MMTV Integration Site Family, Member 5A; WNT-5A Protein; Protein Wnt-5a; Epididymis Secretory Sperm Binding Protein

Background

Gene Name: WNT5A

NCBI Gene Entry: [7474](#)

UniProt Entry: [P41221](#)

Application Information

Molecular Weight: Predicted, 42 kDa, observed, 42 kDa

Clonality: Rabbit monoclonal antibody

Clone ID: 23GB2400

Species Reactivity: Human

Applications Tested: Western blotting (WB), flow cytometry (FCM), immunocytochemistry (IC)

Immunogen

A synthesized peptide derived from human Wnt5a

Isotype

Rabbit IgG

Storage Buffer

Supplied in PBS (pH 7.4) containing 50% glycerol, and 0.02% sodium azide.

Storage

Store at -20 °C for one year.

Recommended Dilutions

Western Blotting (WB): 1:1,000-1:5,000

Flow Cytometry (FCM): 1:2,000

Immunocytochemistry (IC): 1:100-1:1,000

Note: This product is for research use only.

Validation Data

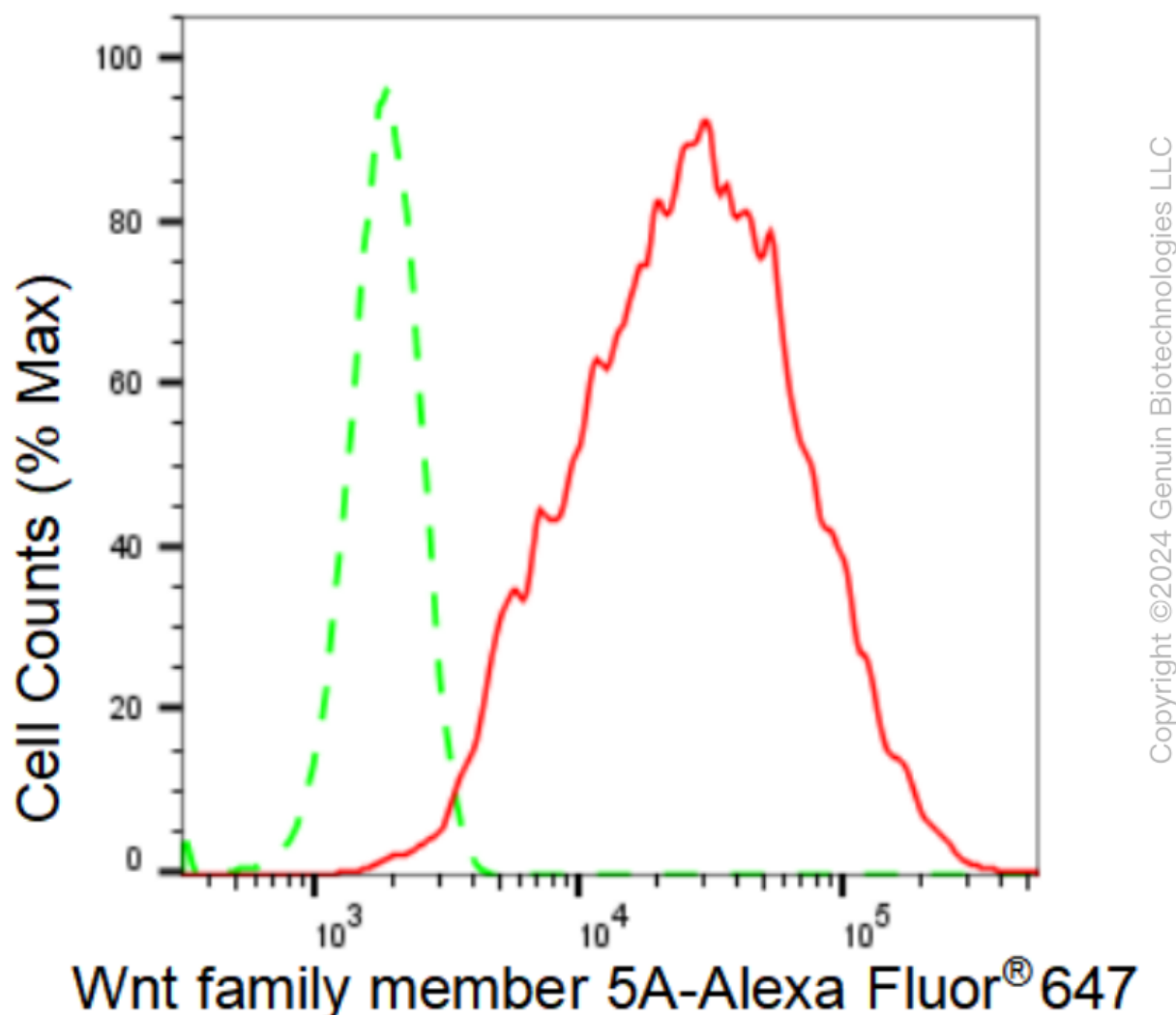
SUPPORT

SUPPORT@GENUINBIOTECH.COM
TEL: +1-540-855-7041

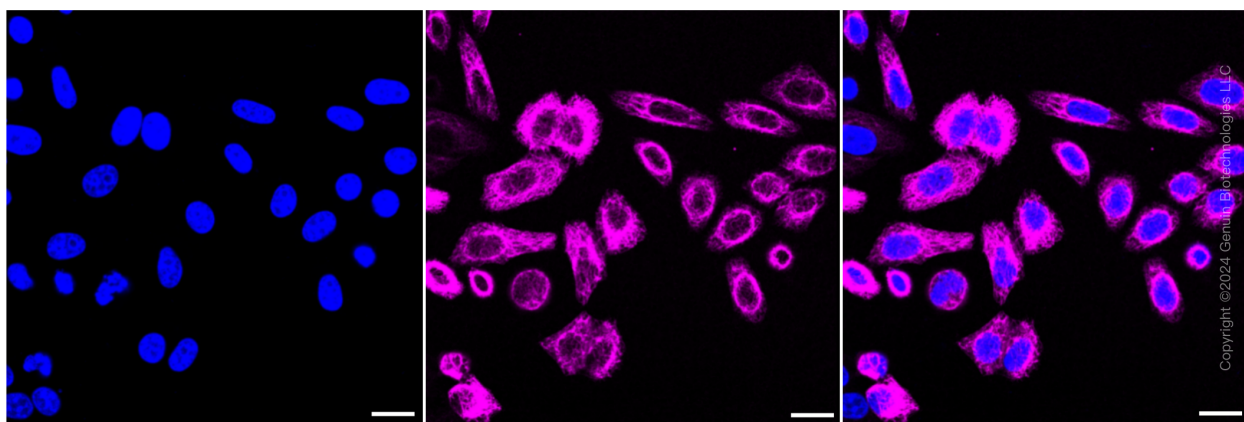
ORDERS

SALES@GENUINBIOTECH.COM
FAX: +1-540-855-7041

WWW.GENUINBIOTECH.COM



Flow cytometric analysis of Wnt family member 5A expression in HepG2 cells using Wnt family member 5A antibody (Cat#61523, 1:2,000). Green, isotype control; red, Wnt family member 5A.

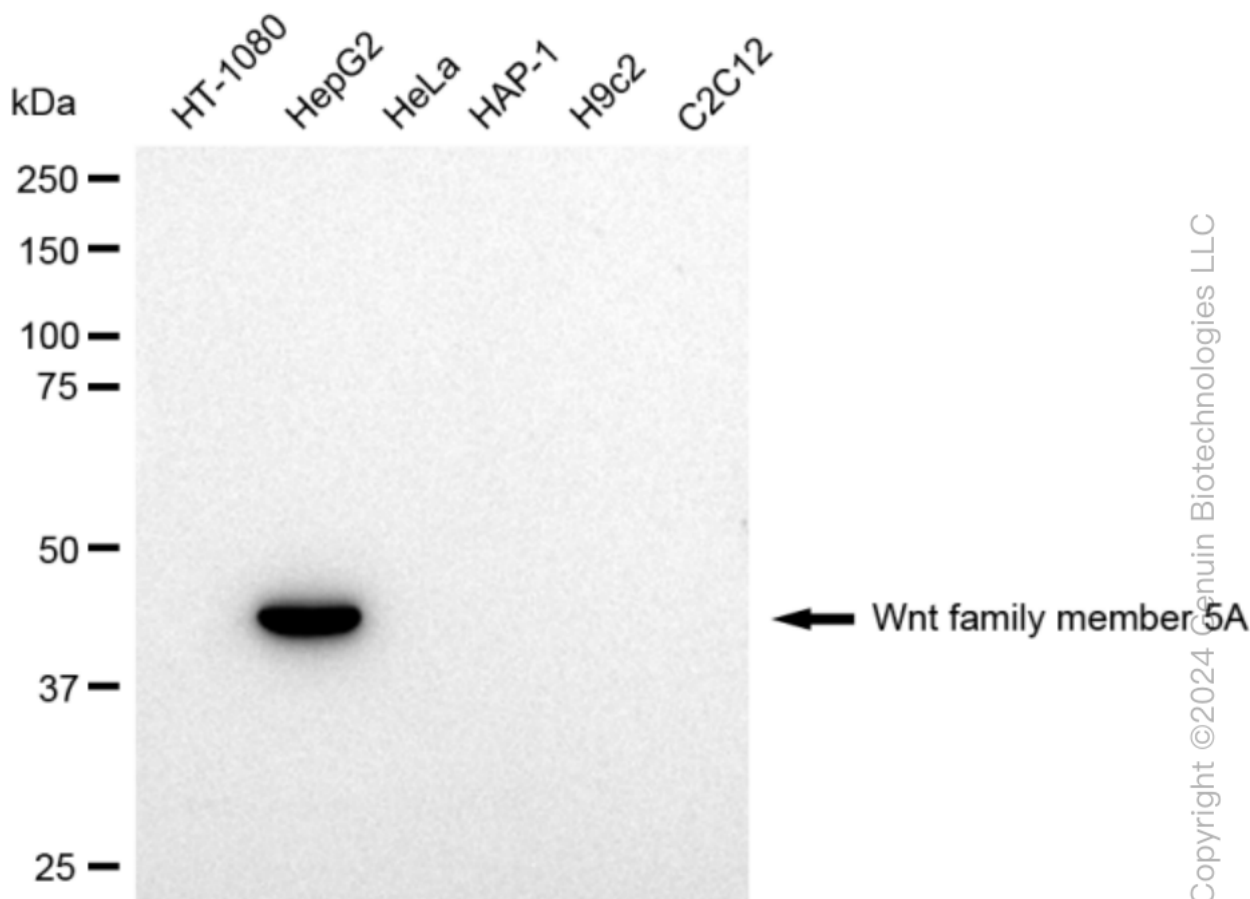


Immunocytochemical staining of HepG2 cells with Wnt family member 5A antibody (Cat#61523,

KD-Validated Anti-Wnt family member 5A Recombinant Rabbit Monoclonal Antibody

PAGE 3

1:1,000). Nuclei were stained blue with DAPI; Wnt family member 5A was stained magenta with Alexa Fluor® 647. Images were taken using Leica stellaris 5. Protein abundance based on laser Intensity and smart gain: High. Scale bar: 20 μ m.



Western blotting analysis using anti-Wnt family member 5A antibody (Cat#61523). Total cell lysates (30 μ g) from various cell lines were loaded and separated by SDS-PAGE. The blot was incubated with anti-Wnt family member 5A antibody (Cat#61523, 1:5,000) and HRP-conjugated goat anti-rabbit secondary antibody (Cat#201, 1:20,000) respectively. Image was developed using FeQ™ ECL Substrate Kit (Cat#226).

SUPPORT

SUPPORT@GENUINBIOTECH.COM
TEL: +1-540-855-7041

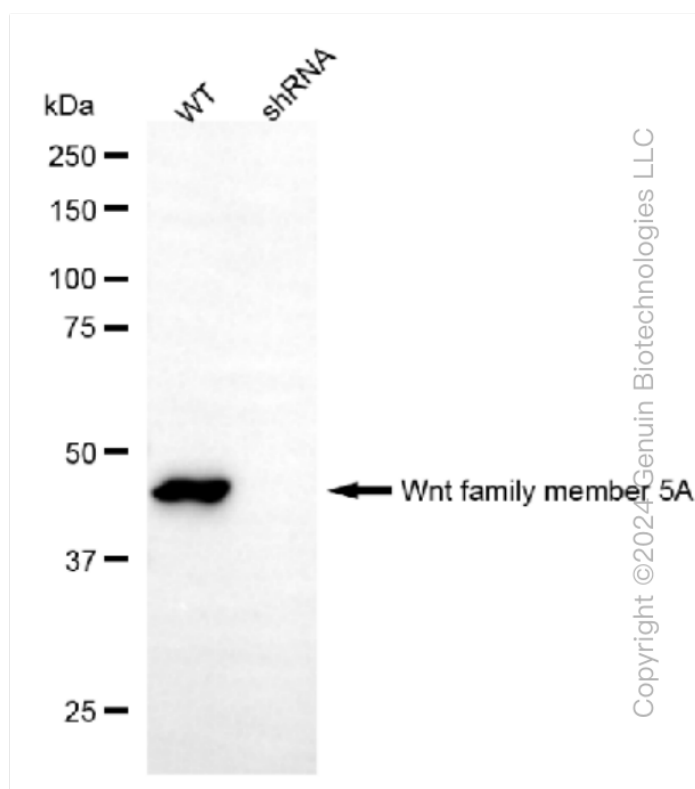
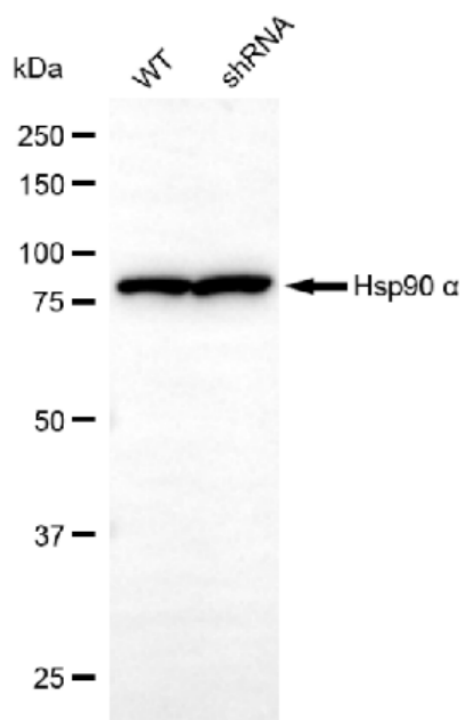
ORDERS

SALES@GENUINBIOTECH.COM
FAX: +1-540-855-7041

WWW.GENUINBIOTECH.COM

KD-Validated Anti-Wnt family member 5A Recombinant Rabbit Monoclonal Antibody

PAGE 4



Western blotting analysis using anti-Wnt family member 5A antibody (Cat#61523). Wnt family member 5A expression in wild type (WT) and Wnt family member 5A shRNA knockdown (KD) HeLa cells with 30 µg of total cell lysates. β-Tubulin serves as a loading control. The blot was incubated with anti-Wnt family member 5A antibody (Cat#61523, 1:5,000) and HRP-conjugated goat anti-rabbit secondary antibody (Cat#201, 1:20,000) respectively. Image was developed using FeQ™ ECL Substrate Kit (Cat#226).

SUPPORT

SUPPORT@GENUINBIOTECH.COM
TEL: +1-540-855-7041

ORDERS

SALES@GENUINBIOTECH.COM
FAX: +1-540-855-7041

WWW.GENUINBIOTECH.COM