

# KD-Validated Anti-NFKB1 Recombinant Rabbit Monoclonal Antibody



**Catalog #: 61524**

## Aliases

NFKB1; Nuclear Factor Kappa B Subunit 1; Nuclear Factor Of Kappa Light Polypeptide Gene Enhancer In B-Cells 1; Nuclear Factor NF-Kappa-B P105 Subunit; NFKB-P50; NF-KB1; KBF1; DNA-Binding Factor KBF1; NF-KappaB; NFkappaB; EBP-1; P105; P50; Nuclear Factor Kappa-B DNA Binding Subunit; Nuclear Factor NF-Kappa-B P50 Subunit; NF-Kappabeta; NF-Kappa-B1; NFKB-P105; NF-KAPPAB; NFKAPPAB; CVID12; NF-KB

## Background

Gene Name: NFKB1

NCBI Gene Entry: [4790](#)

UniProt Entry: [P19838](#)

## Application Information

Molecular Weight: Predicted, 105 kDa, observed, 50,105 kDa

Clonality: Rabbit monoclonal antibody

Clone ID: 23GB2710

Species Reactivity: Human, mouse, rat

Applications Tested: Western blotting (WB), flow cytometry (FCM), immunocytochemistry (IC)

## Immunogen

A synthesized peptide derived from human NF- $\kappa$ B (p105/p50)

## Isotype

Rabbit IgG

## Storage Buffer

Supplied in PBS (pH 7.4) containing 50% glycerol, and 0.02% sodium azide.

## Storage

Store at -20 °C for one year.

## Recommended Dilutions

Western Blotting (WB): 1:1,000-1:5,000

Flow Cytometry (FCM): 1:2,000

Immunocytochemistry (IC): 1:100-1:1,000

---

### SUPPORT

SUPPORT@GENUINBIOTECH.COM  
TEL: +1-540-855-7041

### ORDERS

SALES@GENUINBIOTECH.COM  
FAX: +1-540-855-7041

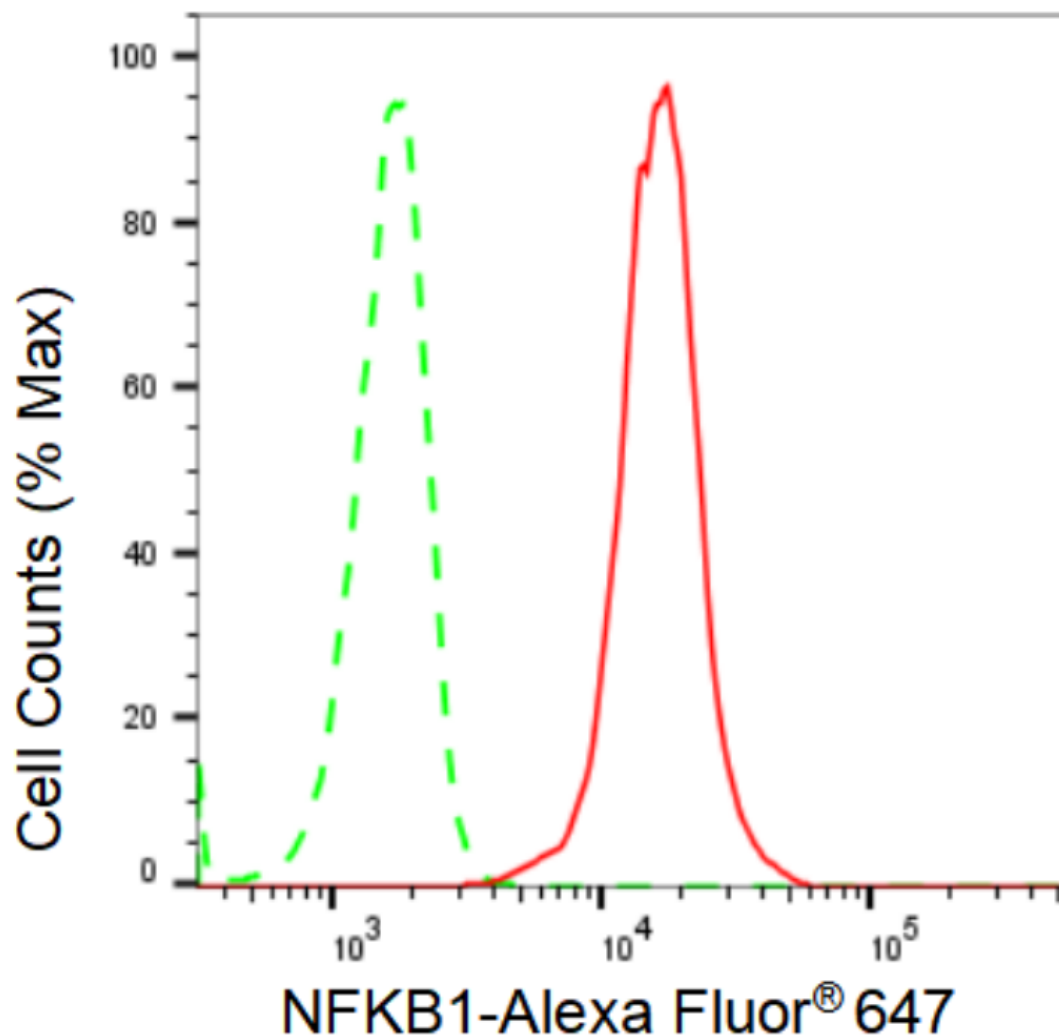
[WWW.GENUINBIOTECH.COM](http://WWW.GENUINBIOTECH.COM)

## KD-Validated Anti-NFKB1 Recombinant Rabbit Monoclonal Antibody

PAGE 2

**Note:** This product is for research use only.

### Validation Data



Copyright ©2024 Genuin Biotechnologies LLC

Flow cytometric analysis of NFKB1 expression in C2C12 cells using NFKB1 antibody (Cat#61524, 1:2,000). Green, isotype control; red, NFKB1.

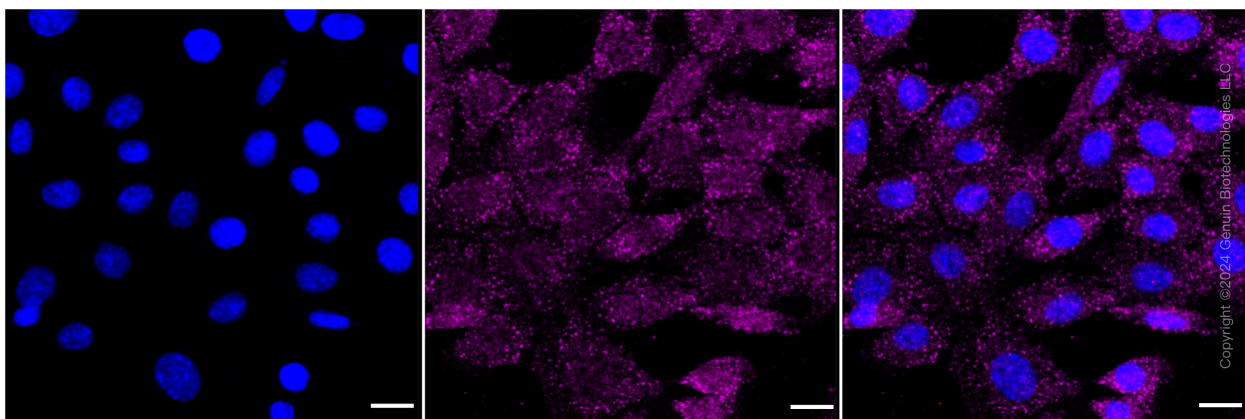
#### SUPPORT

SUPPORT@GENUINBIOTECH.COM  
TEL: +1-540-855-7041

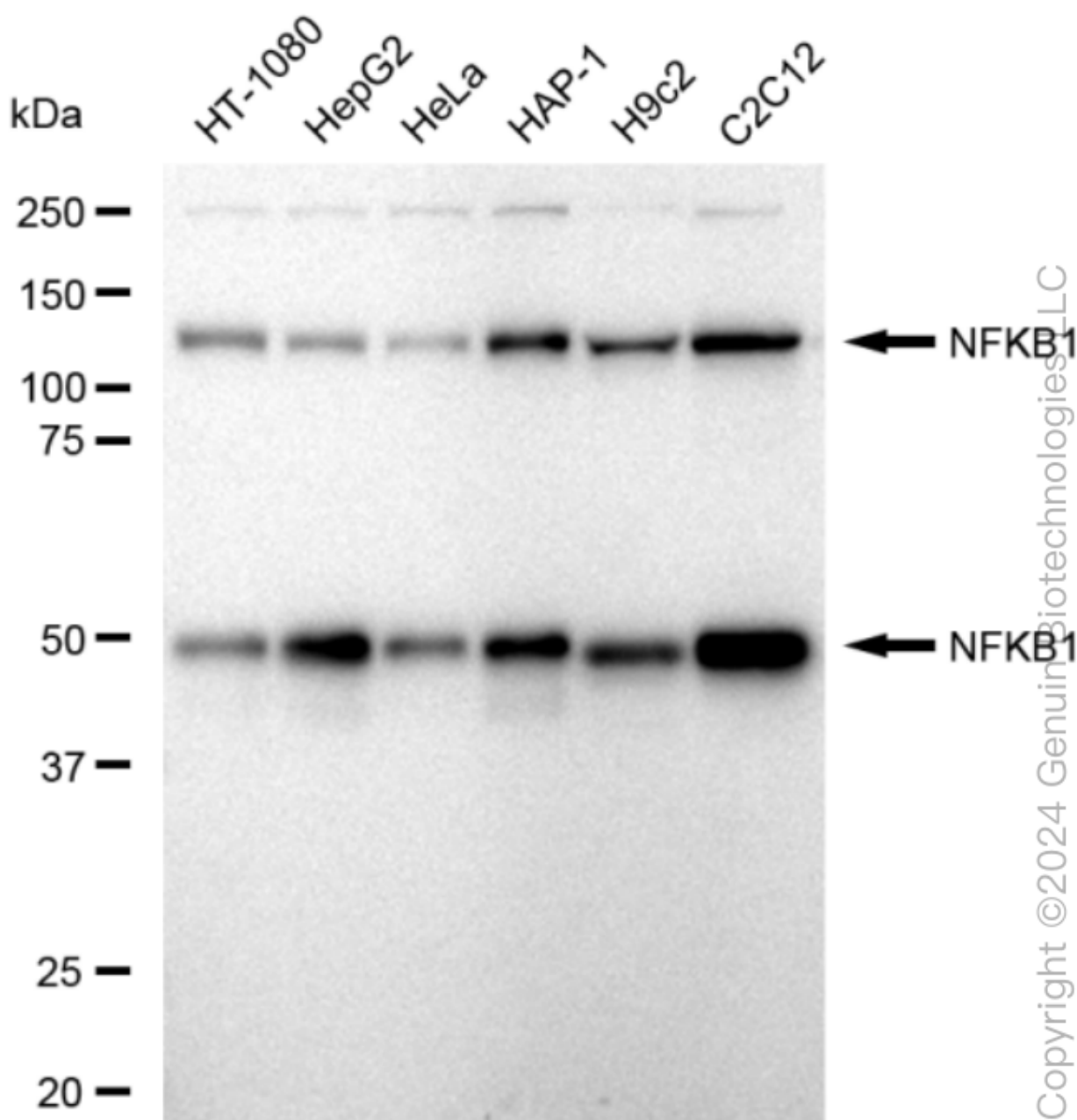
#### ORDERS

SALES@GENUINBIOTECH.COM  
FAX: +1-540-855-7041

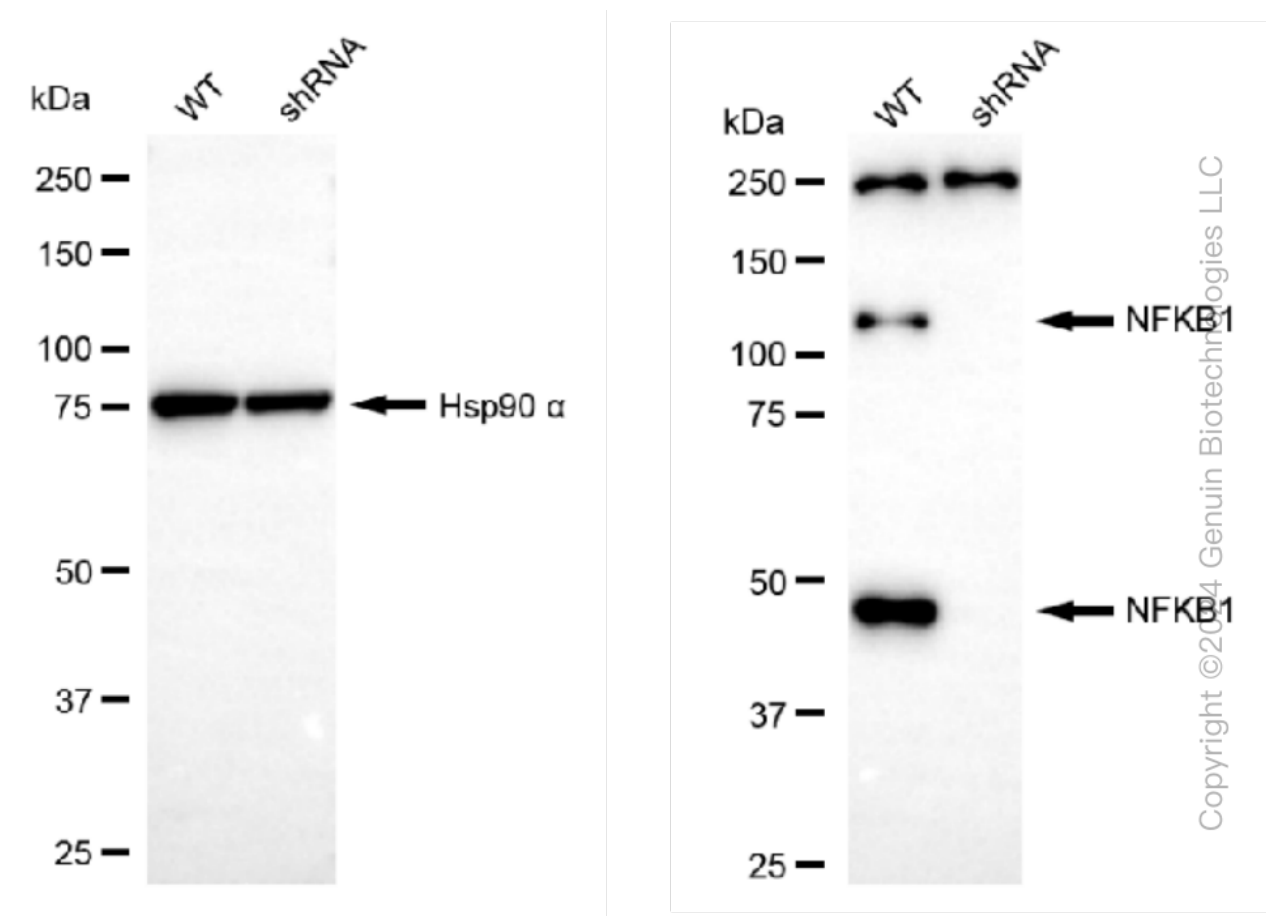
[WWW.GENUINBIOTECH.COM](http://WWW.GENUINBIOTECH.COM)



Immunocytochemical staining of C2C12 cells with NFKB1 antibody (Cat#61524, 1:1,000). Nuclei were stained blue with DAPI; NFKB1 was stained magenta with Alexa Fluor® 647. Images were taken using Leica stellaris 5. Protein abundance based on laser Intensity and smart gain: Medium. Scale bar: 20  $\mu$ m.



Western blotting analysis using anti-NFKB1 antibody (Cat#61524). Total cell lysates (30 µg) from various cell lines were loaded and separated by SDS-PAGE. The blot was incubated with anti-NFKB1 antibody (Cat#61524, 1:5,000) and HRP-conjugated goat anti-rabbit secondary antibody (Cat#201, 1:20,000) respectively. Image was developed using FeQ™ ECL Substrate Kit (Cat#226).



Western blotting analysis using anti-NFKB1 antibody (Cat#61524). NFKB1 expression in wild type (WT) and NFKB1 shRNA knockdown (KD) HeLa cells with 30 µg of total cell lysates. Hsp90 α serves as a loading control. The blot was incubated with anti-NFKB1 antibody (Cat#61524, 1:5,000) and HRP-conjugated goat anti-rabbit secondary antibody (Cat#201, 1:20,000) respectively. Image was developed using FeQ™ ECL Substrate Kit (Cat#226).