

# KD-Validated Anti-Grp75 Recombinant Rabbit Monoclonal Antibody



**Catalog #: 61525**

## Aliases

HSPA9; Heat Shock Protein Family A (Hsp70) Member 9; GRP75; PBP74; 75 KDa Glucose-Regulated Protein; Stress-70 Protein, Mitochondrial; HSPA9B; Heat Shock 70kDa Protein 9 (Mortalin); Peptide-Binding Protein 74; Mortalin2; Mortalin; MTHSP75; GRP-75; MOT; Epididymis Secretory Sperm Binding Protein Li 124m; Heat Shock 70kDa Protein 9B (Mortalin-2); Catecholamine-Regulated Protein 40; Heat Shock 70 KDa Protein 9; Heat Shock 70kD Protein 9B; Mortalin, Perinuclear; P66-Mortalin; HEL-S-124m; Mortalin-2; Mt-HSP70; Mthsp75; SIDBA4; Mot-2; CRP40; EVPLS; MOT-2; MOT2; SAAN; CSA

## Background

Gene Name: HSPA9

NCBI Gene Entry: [3313](#)

UniProt Entry: [P38646](#)

## Application Information

Molecular Weight: Predicted, 74 kDa, observed, 74 kDa

Clonality: Rabbit monoclonal antibody

Clone ID: 23GB2615

Species Reactivity: Human, mouse

Applications Tested: Western blotting (WB), immunocytochemistry (IC)

## Immunogen

A synthesized peptide derived from human Grp75

## Isotype

Rabbit IgG

## Storage Buffer

Supplied in PBS (pH 7.4) containing 50% glycerol, and 0.02% sodium azide.

## Storage

Store at -20 °C for one year.

## Recommended Dilutions

Western Blotting (WB): 1:1,000-1:5,000

Immunocytochemistry (IC): 1:100-1:1,000

---

### SUPPORT

SUPPORT@GENUINBIOTECH.COM  
TEL: +1-540-855-7041

### ORDERS

SALES@GENUINBIOTECH.COM  
FAX: +1-540-855-7041

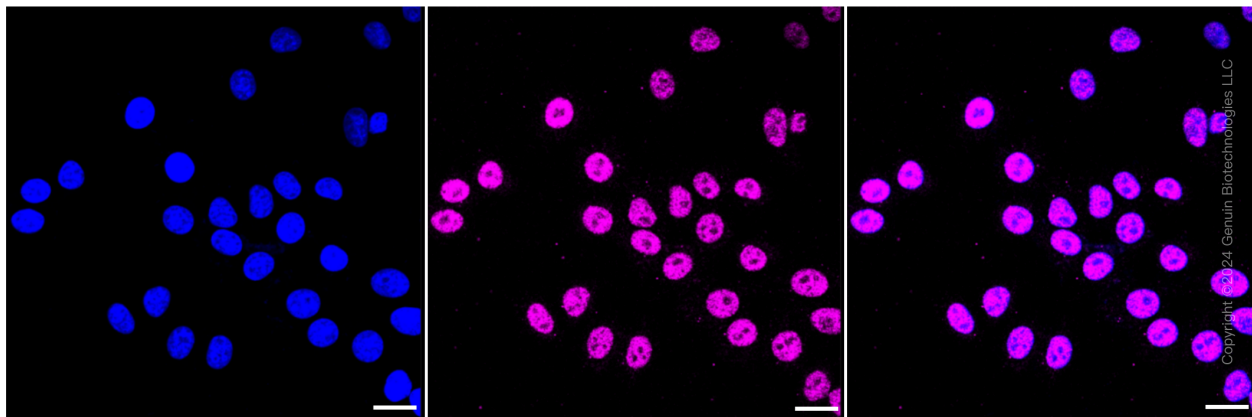
[WWW.GENUINBIOTECH.COM](http://WWW.GENUINBIOTECH.COM)

# KD-Validated Anti-Grp75 Recombinant Rabbit Monoclonal Antibody

PAGE 2

**Note:** This product is for research use only.

## Validation Data



Immunocytochemical staining of HepG2 cells with Grp75 antibody (Cat#61525, 1:1,000). Nuclei were stained blue with DAPI; Grp75 was stained magenta with Alexa Fluor® 647. Images were taken using Leica stellaris 5. Protein abundance based on laser Intensity and smart gain: Medium. Scale bar: 20  $\mu$ m.

---

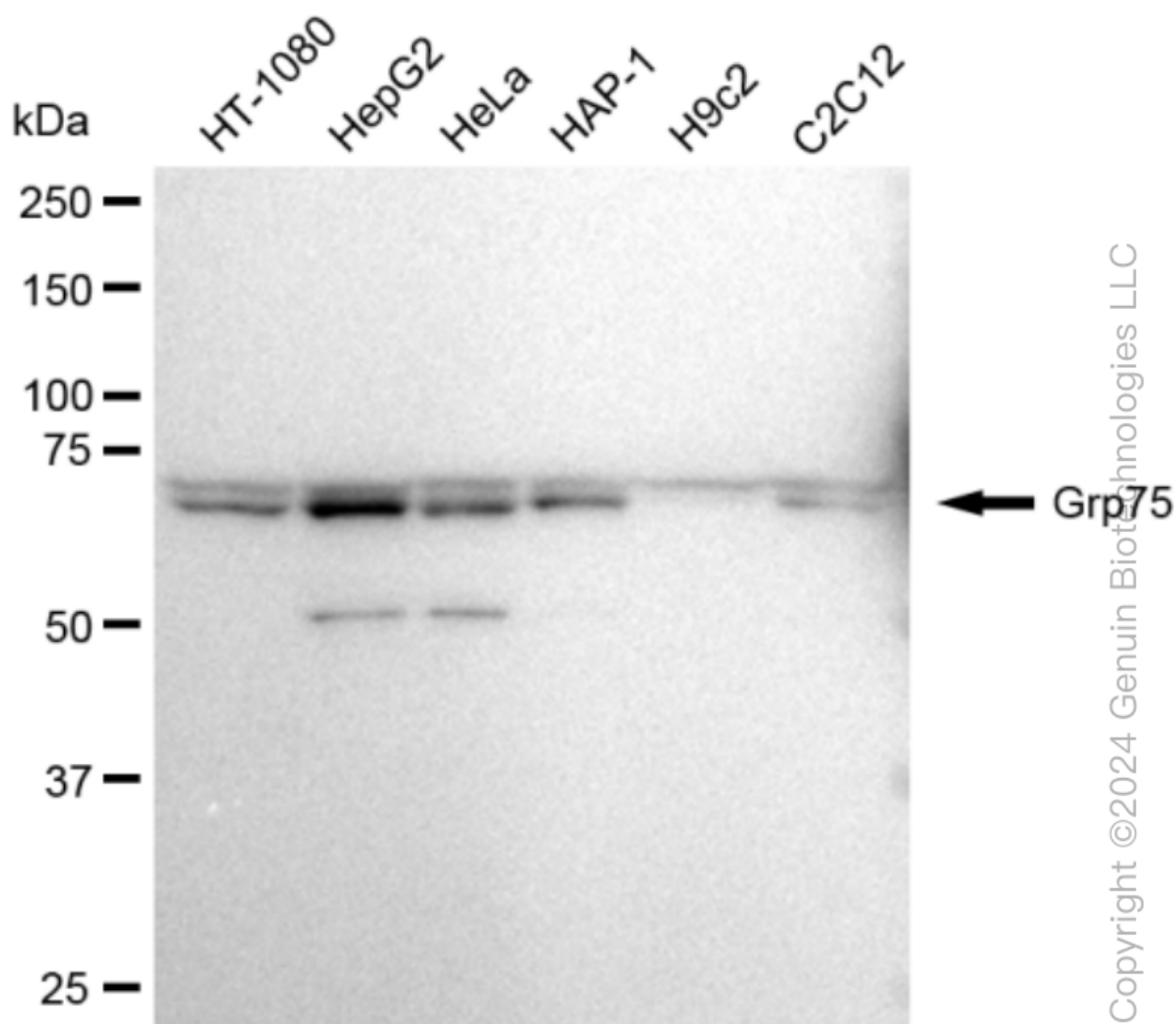
### SUPPORT

SUPPORT@GENUINBIOTECH.COM  
TEL: +1-540-855-7041

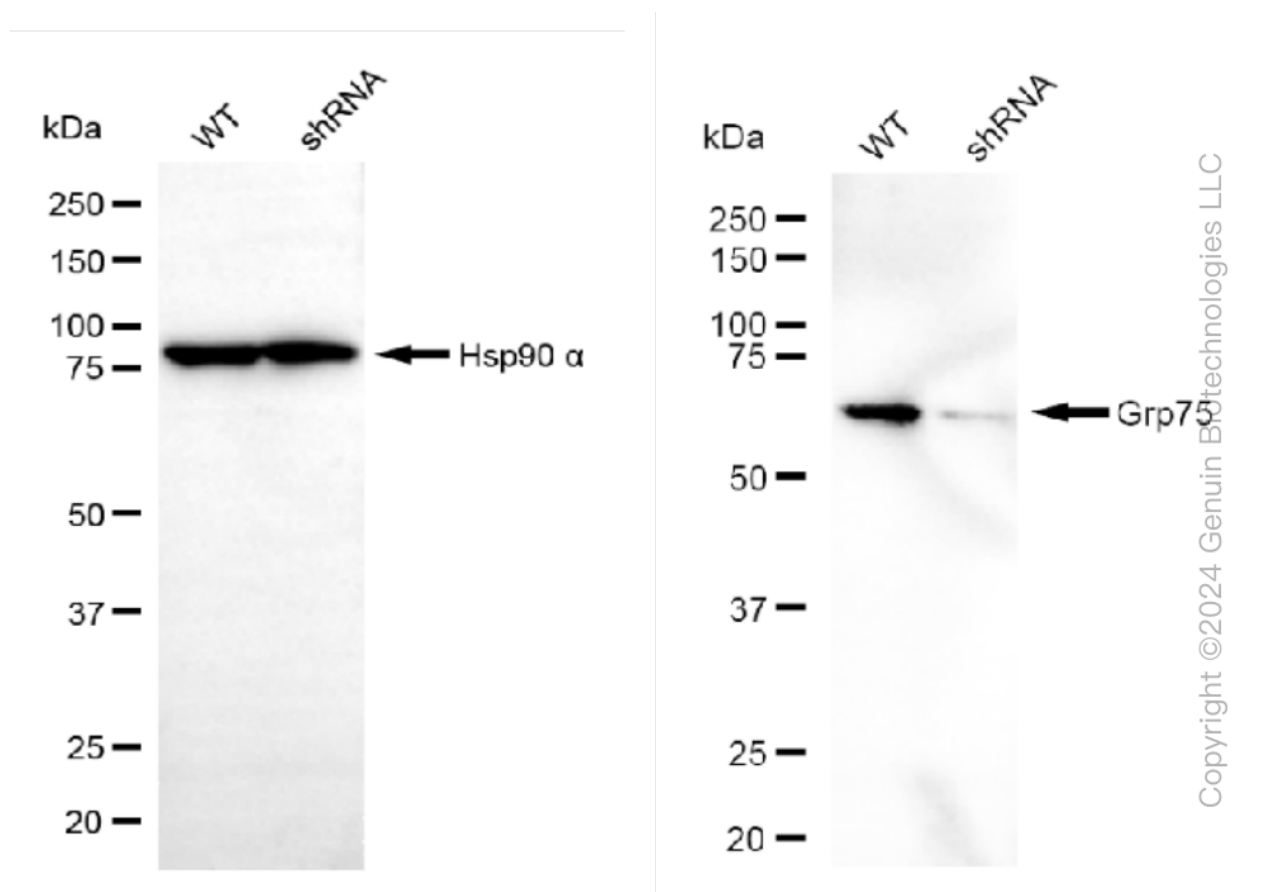
### ORDERS

SALES@GENUINBIOTECH.COM  
FAX: +1-540-855-7041

[WWW.GENUINBIOTECH.COM](http://WWW.GENUINBIOTECH.COM)



Western blotting analysis using anti-Grp75 antibody (Cat#61525). Total cell lysates (30 µg) from various cell lines were loaded and separated by SDS-PAGE. The blot was incubated with anti-Grp75 antibody (Cat#61525, 1:5,000) and HRP-conjugated goat anti-rabbit secondary antibody (Cat#201, 1:20,000) respectively. Image was developed using FeQ™ ECL Substrate Kit (Cat#226).



Western blotting analysis using anti-Grp75 antibody (Cat#61525). Grp75 expression in wild type (WT) and Grp75 shRNA knockdown (KD) HeLa cells with 30  $\mu$ g of total cell lysates.  $\beta$ -Tubulin serves as a loading control. The blot was incubated with anti-Grp75 antibody (Cat#61525, 1:5,000) and HRP-conjugated goat anti-rabbit secondary antibody (Cat#201, 1:20,000) respectively. Image was developed using FeQ™ ECL Substrate Kit (Cat#226).