

KD-Validated Anti-Lysine acetyltransferase 7 Recombinant Rabbit Monoclonal Antibody



Catalog #: 61526

Aliases

KAT7; Lysine Acetyltransferase 7; HBO1; Histone Acetyltransferase Binding To ORC1; ZC2HC7; MYST2; HBOA; MOZ, YBF2/SAS3, SAS2 And TIP60 Protein; MYST Histone Acetyltransferase 2; Histone Acetyltransferase KAT7; K(Lysine) Acetyltransferase 7; Histone Acetyltransferase MYST2; EC 2.3.1.48; MYST-2; HBOa

Background

Gene Name: KAT7

NCBI Gene Entry: [11143](#)

UniProt Entry: [O95251](#)

Application Information

Molecular Weight: Predicted, 71 kDa, observed, 75 kDa

Clonality: Rabbit monoclonal antibody

Clone ID: 23GB2390

Species Reactivity: Human, mouse, rat

Applications Tested: Western blotting (WB), flow cytometry (FCM), immunocytochemistry (IC)

Immunogen

A synthesized peptide derived from human KAT7 / HBO1 / MYST2

Isotype

Rabbit IgG

Storage Buffer

Supplied in PBS (pH 7.4) containing 50% glycerol, and 0.02% sodium azide.

Storage

Store at -20 °C for one year.

Recommended Dilutions

Western Blotting (WB): 1:1,000-1:5,000

Flow Cytometry (FCM): 1:2,000

Immunocytochemistry (IC): 1:100-1:1,000

SUPPORT

SUPPORT@GENUINBIOTECH.COM
TEL: +1-540-855-7041

ORDERS

SALES@GENUINBIOTECH.COM
FAX: +1-540-855-7041

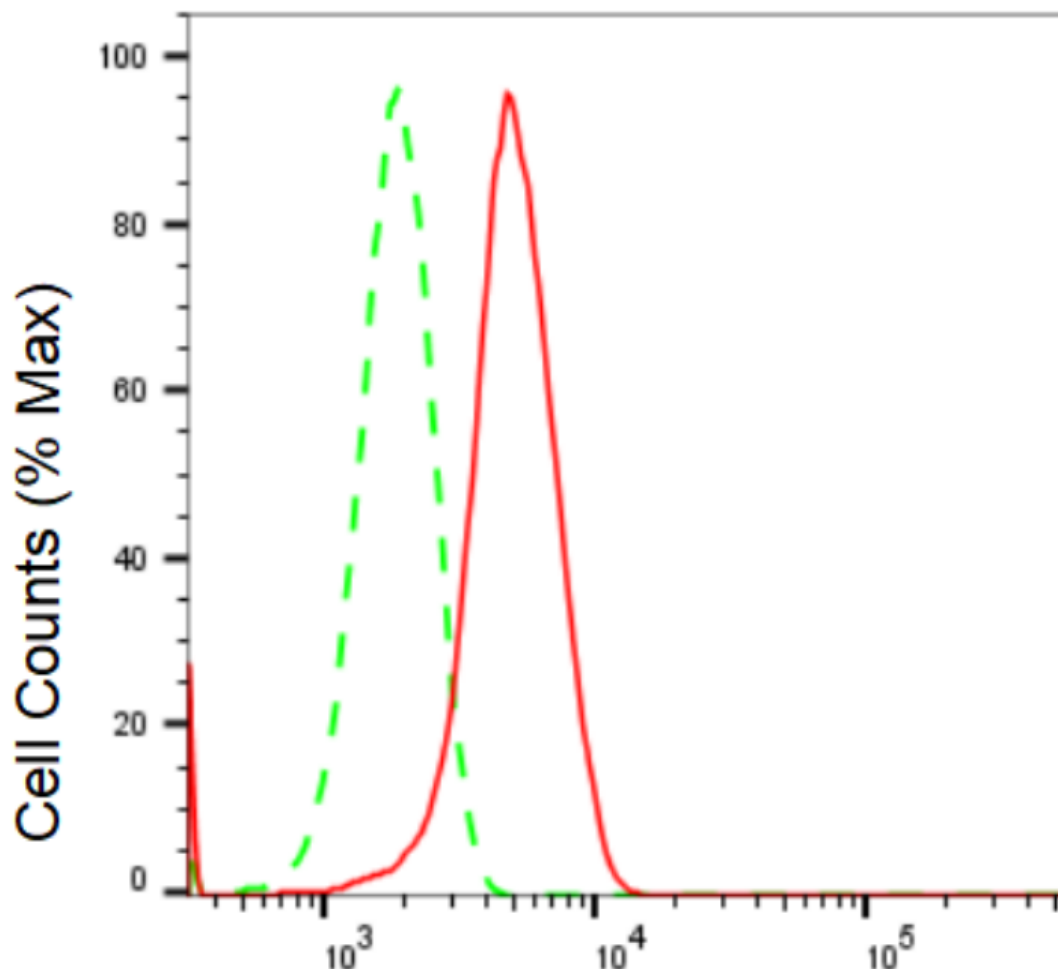
WWW.GENUINBIOTECH.COM

KD-Validated Anti-Lysine acetyltransferase 7 Recombinant Rabbit Monoclonal Antibody

PAGE 2

Note: This product is for research use only.

Validation Data



Copyright ©2024 Genuin Biotechnologies LLC

Lysine acetyltransferase 7-Alexa Fluor® 647

Flow cytometric analysis of Lysine acetyltransferase 7 expression in HepG2 cells using Lysine acetyltransferase 7 antibody (Cat#61526, 1:2,000). Green, isotype control; red, Lysine acetyltransferase 7.

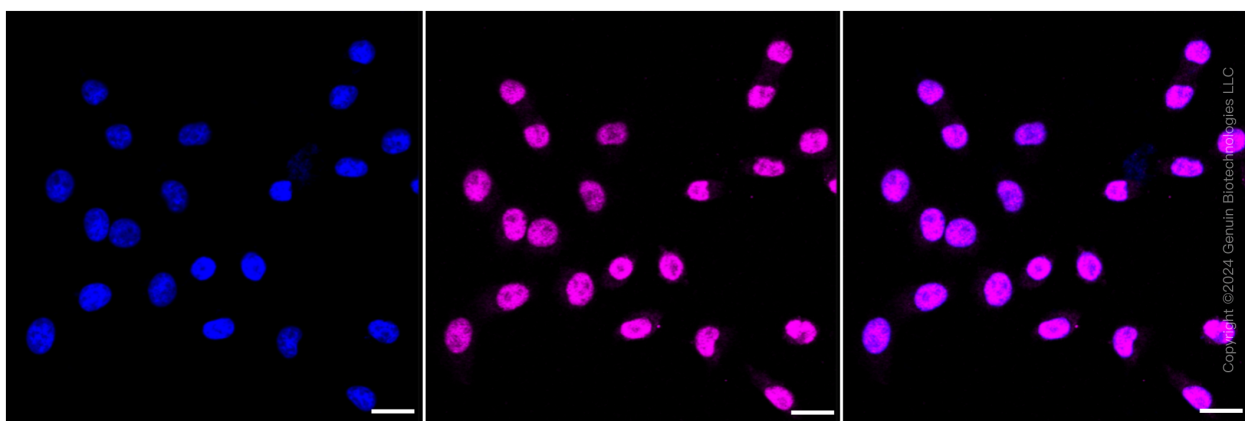
SUPPORT

SUPPORT@GENUINBIOTECH.COM
TEL: +1-540-855-7041

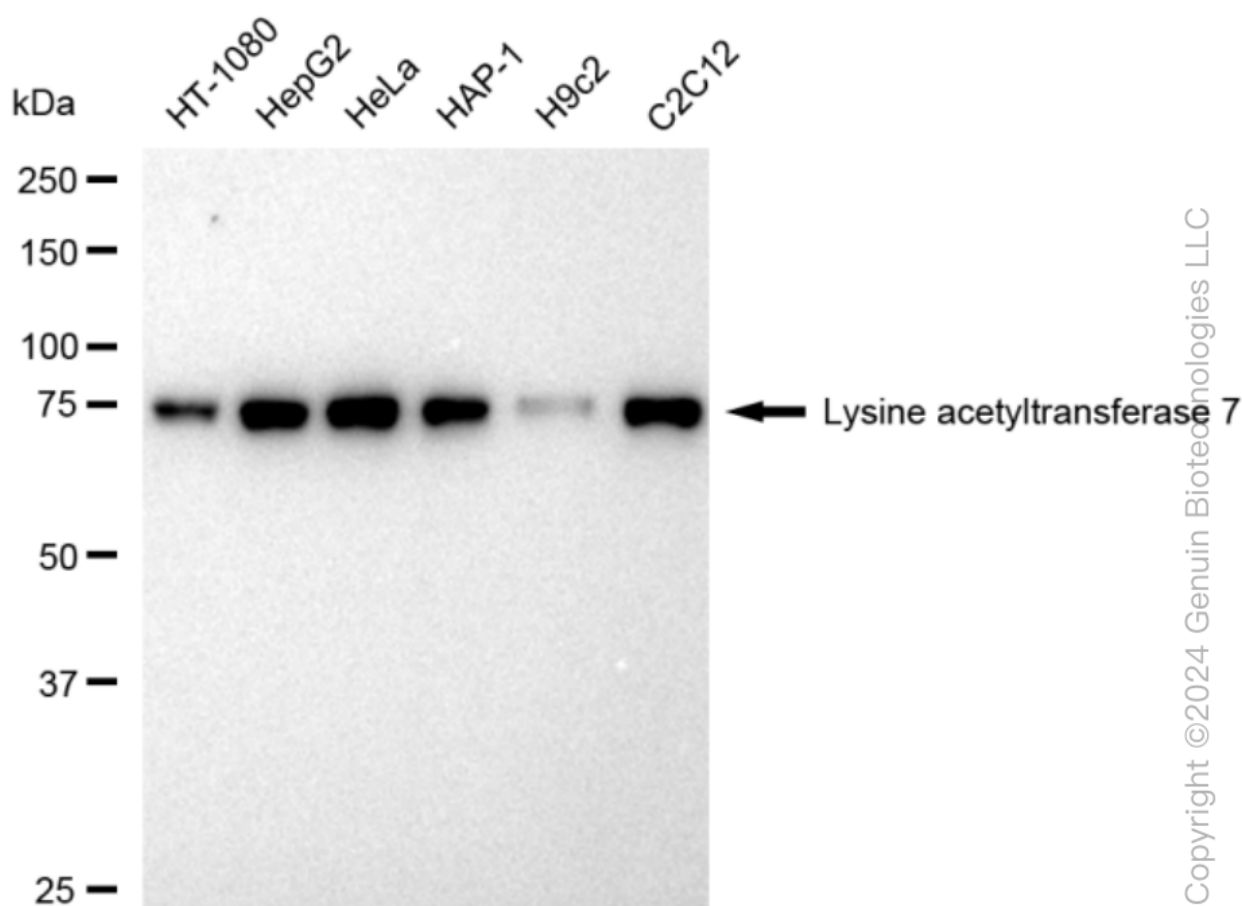
ORDERS

SALES@GENUINBIOTECH.COM
FAX: +1-540-855-7041

WWW.GENUINBIOTECH.COM



Immunocytochemical staining of HepG2 cells with Lysine acetyltransferase 7 antibody (Cat#61526, 1:1,000). Nuclei were stained blue with DAPI; Lysine acetyltransferase 7 was stained magenta with Alexa Fluor® 647. Images were taken using Leica stellaris 5. Protein abundance based on laser Intensity and smart gain: Medium. Scale bar: 20 µm.

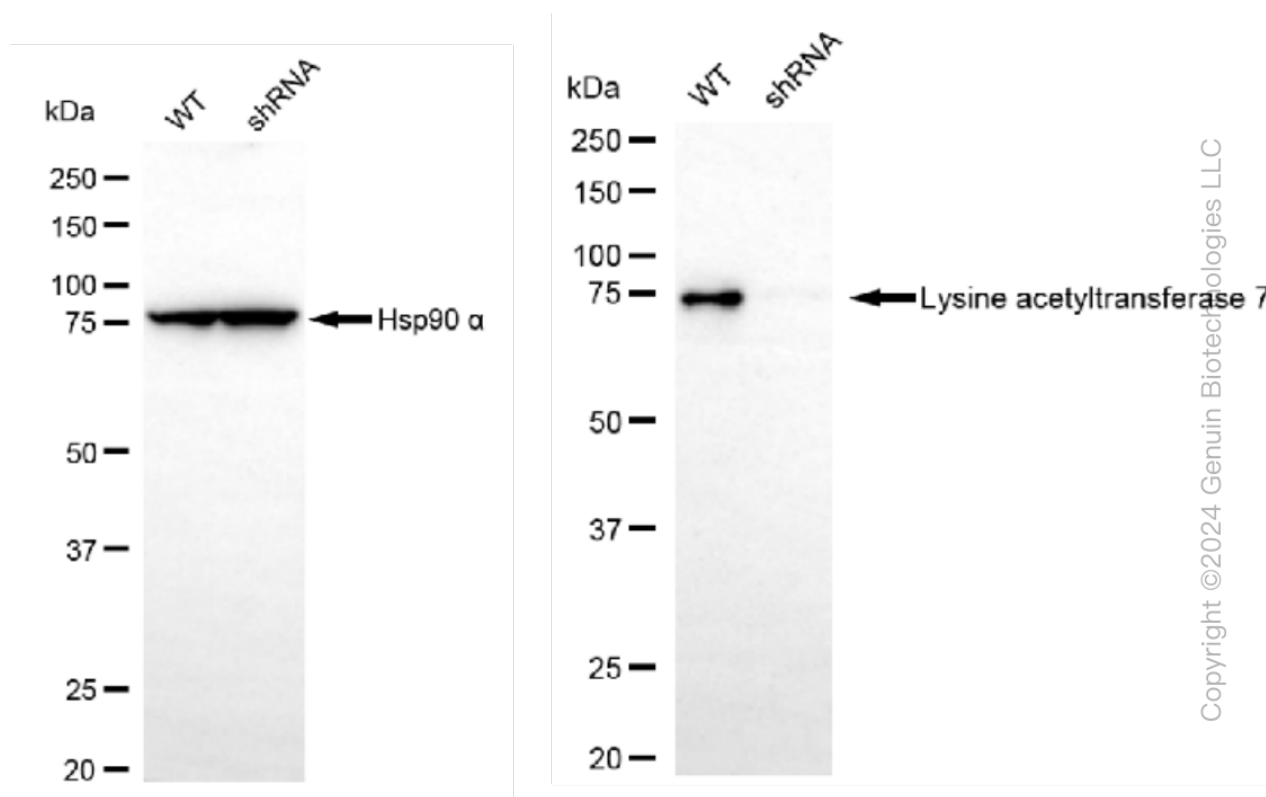


Western blotting analysis using anti-Lysine acetyltransferase 7 antibody (Cat#61526). Total cell lysates (30 µg) from various cell lines were loaded and separated by SDS-PAGE. The blot was incubated with anti-Lysine acetyltransferase 7 antibody (Cat#61526, 1:5,000) and HRP-conjugated

KD-Validated Anti-Lysine acetyltransferase 7 Recombinant Rabbit Monoclonal Antibody

PAGE 4

goat anti-rabbit secondary antibody (Cat#201, 1:20,000) respectively. Image was developed using FeQ™ ECL Substrate Kit (Cat#226).



Western blotting analysis using anti-Lysine acetyltransferase 7 antibody (Cat#61526). Lysine acetyltransferase 7 expression in wild type (WT) and lysine acetyltransferase 7 shRNA knockdown (KD) HeLa cells with 30 µg of total cell lysates. β-Tubulin serves as a loading control. The blot was incubated with anti-Lysine acetyltransferase 7 antibody (Cat#61526, 1:5,000) and HRP-conjugated goat anti-rabbit secondary antibody (Cat#201, 1:20,000) respectively. Image was developed using FeQ™ ECL Substrate Kit (Cat#226).

SUPPORT

SUPPORT@GENUINBIOTECH.COM
TEL: +1-540-855-7041

ORDERS

SALES@GENUINBIOTECH.COM
FAX: +1-540-855-7041

WWW.GENUINBIOTECH.COM