

KD-Validated Anti-RPS3 Recombinant Rabbit Monoclonal Antibody



Catalog #: 61528

Aliases

RPS3; Ribosomal Protein S3; 40S Ribosomal Protein S3; S3; Small Ribosomal Subunit Protein US3; IMR-90 Ribosomal Protein S3; FLJ26283; FLJ27450; MGC87870; US3; EC 4.2.99.18

Background

Gene Name: RPS3

NCBI Gene Entry: [6188](#)

UniProt Entry: [P23396](#)

Application Information

Molecular Weight: Predicted, 27 kDa; observed, 31 kDa

Clonality: Rabbit monoclonal antibody

Clone ID: 25GB2645

Species Reactivity: Human, rat

Applications Tested: Western blotting (WB)

Immunogen

A synthesized peptide derived from human RPS3

Isotype

Rabbit IgG

Storage Buffer

Supplied in PBS (pH 7.4) containing 50% glycerol, and 0.02% sodium azide.

Storage

Store at -20 °C for one year.

Recommended Dilutions

Western blotting (WB): 1:1,000-1:5,000

Note: This product is for research use only.

Validation Data

SUPPORT

SUPPORT@GENUINBIOTECH.COM
TEL: +1-540-855-7041

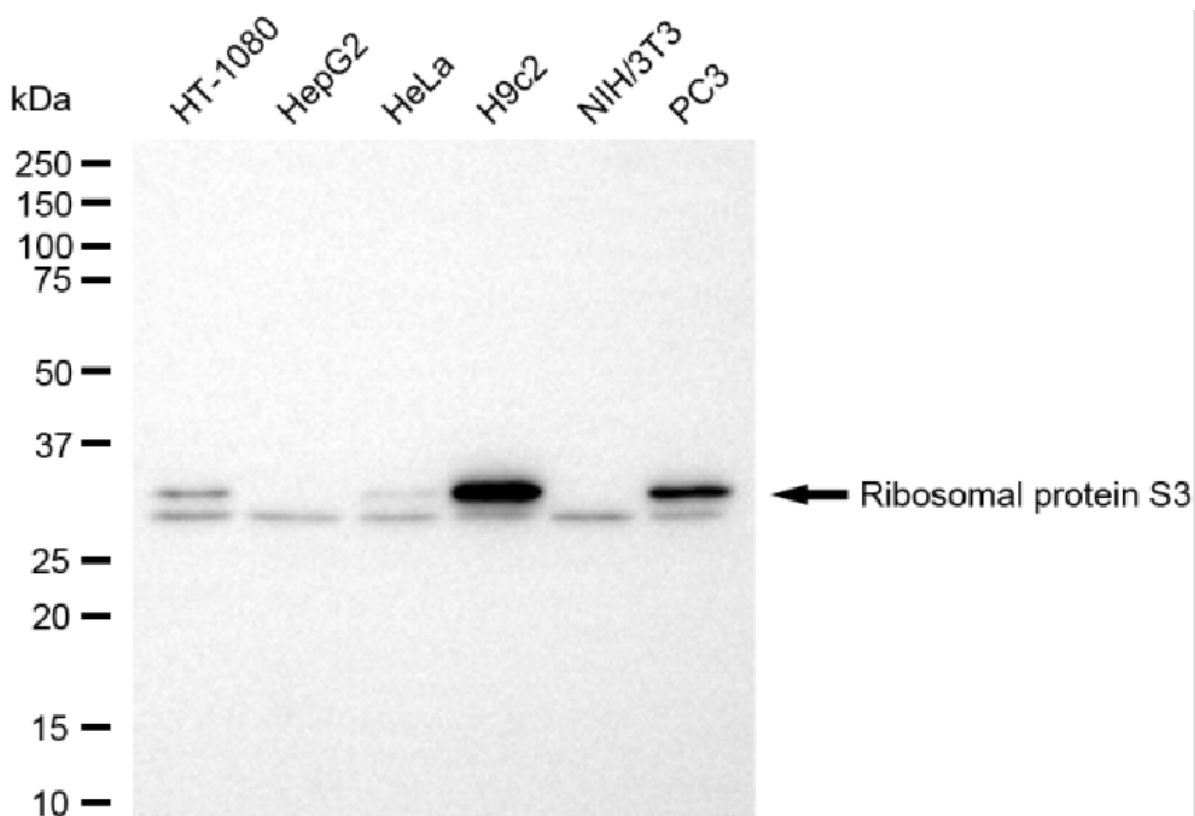
ORDERS

SALES@GENUINBIOTECH.COM
FAX: +1-540-855-7041

WWW.GENUINBIOTECH.COM

KD-Validated Anti-RPS3 Recombinant Rabbit Monoclonal Antibody

PAGE 2



Western blotting analysis using anti-ribosomal protein S3 antibody (Cat#61528). Total cell lysates (30 µg) from various cell lines were loaded and separated by SDS-PAGE. The blot was incubated with anti-ribosomal protein S3 antibody (Cat#61528, 1:5,000) and HRP-conjugated goat anti-rabbit secondary antibody (Cat#201, 1:20,000) respectively. Image was developed using NaQ™ ECL Substrate Kit (Cat#716).

SUPPORT

SUPPORT@GENUINBIOTECH.COM
TEL: +1-540-855-7041

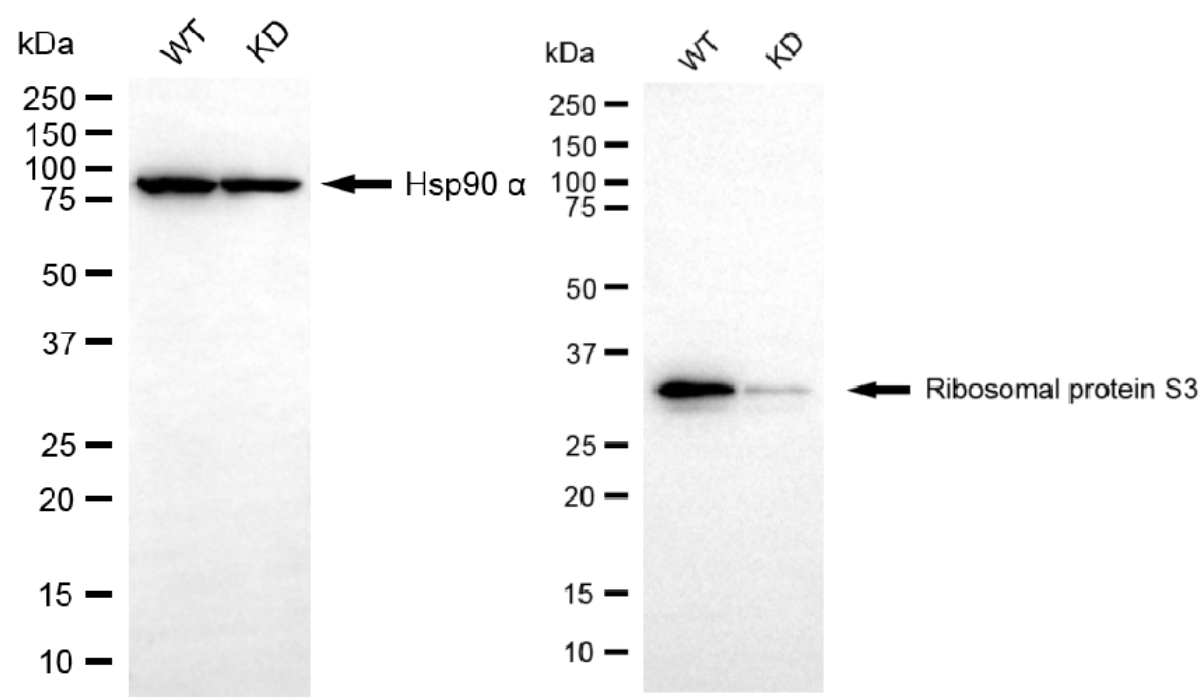
ORDERS

SALES@GENUINBIOTECH.COM
FAX: +1-540-855-7041

WWW.GENUINBIOTECH.COM

KD-Validated Anti-RPS3 Recombinant Rabbit Monoclonal Antibody

PAGE 3



Western blotting analysis using anti-ribosomal protein S3 antibody (Cat#61528). Ribosomal protein S3 expression in wild-type (WT) and ribosomal protein S3 (RPS3) knockdown (KD) HSHC cells with 20 µg of total cell lysates. Hsp90 α serves as a loading control. The blot was incubated with anti-ribosomal protein S3 antibody (Cat#61528, 1:5,000) and HRP-conjugated goat anti-rabbit secondary antibody (Cat#201, 1:20,000) respectively. Image was developed using NaQ™ ECL Substrate Kit (Cat#716).

SUPPORT

SUPPORT@GENUINBIOTECH.COM
TEL: +1-540-855-7041

ORDERS

SALES@GENUINBIOTECH.COM
FAX: +1-540-855-7041

WWW.GENUINBIOTECH.COM