

# KD-Validated Anti-Endoplasmic reticulum aminopeptidase 1 Recombinant Rabbit



**Catalog #: 61531**

## Aliases

ERAP1; Endoplasmic Reticulum Aminopeptidase 1; PILS-AP; ARTS-1; A-LAP; Puromycin-Insensitive Leucyl-Specific Aminopeptidase; Adipocyte-Derived Leucine Aminopeptidase; KIAA0525; ERAAP1; Type 1 Tumor Necrosis Factor Receptor Shedding Aminopeptidase Regulator; Aminopeptidase Regulator Of TNFR1 Shedding; Aminopeptidase PILS; APPILS; ARTS1; Endoplasmic Reticulum Aminopeptidase Associated With Antigen Processing; EC 3.4.11.- 4; EC 3.4.11.3; EC 3.4.11; PILSAP; ERAAP; ALAP

## Background

Gene Name: ERAP1

NCBI Gene Entry: [51752](#)

UniProt Entry: [Q9NZ08](#)

## Application Information

Molecular Weight: Predicted, 107 kDa; observed, 100 kDa

Clonality: Rabbit monoclonal antibody

Clone ID: 25GB2665

Species Reactivity: Human, mouse, rat

Applications Tested: Western blotting (WB), flow cytometry (FCM), immunocytochemistry (IC)

## Immunogen

A synthesized peptide derived from human ERAP1

## Isotype

Rabbit IgG

## Storage Buffer

Supplied in PBS (pH 7.4) containing 50% glycerol, and 0.02% sodium azide.

## Storage

Store at -20 °C for one year.

## Recommended Dilutions

Western Blotting (WB): 1:1,000-1:5,000

Flow Cytometry (FCM): 1:2,000

Immunocytochemistry (IC): 1:100-1:1,000

---

### SUPPORT

SUPPORT@GENUINBIOTECH.COM  
TEL: +1-540-855-7041

### ORDERS

SALES@GENUINBIOTECH.COM  
FAX: +1-540-855-7041

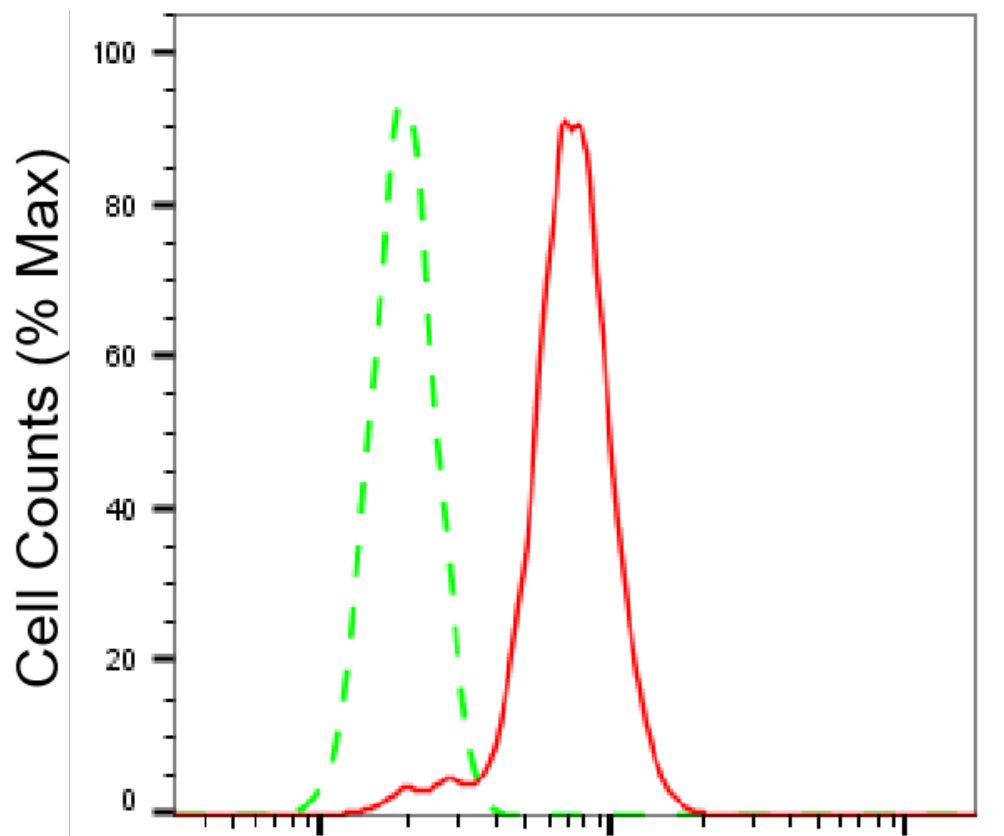
[WWW.GENUINBIOTECH.COM](http://WWW.GENUINBIOTECH.COM)

## KD-Validated Anti-Endoplasmic reticulum aminopeptidase 1 Recombinant Rabbit

PAGE 2

**Note:** This product is for research use only.

### Validation Data



Copyright ©2025 Genuin Biotechnologies LLC

### Endoplasmic reticulum aminopeptidase 1- Alexa Fluor® 647

Flow cytometric analysis of Endoplasmic reticulum aminopeptidase 1 expression in HT-1080 cells using Endoplasmic reticulum aminopeptidase 1 antibody (Cat#61531, 1:2,000). Green, isotype control; red, Endoplasmic reticulum aminopeptidase 1.

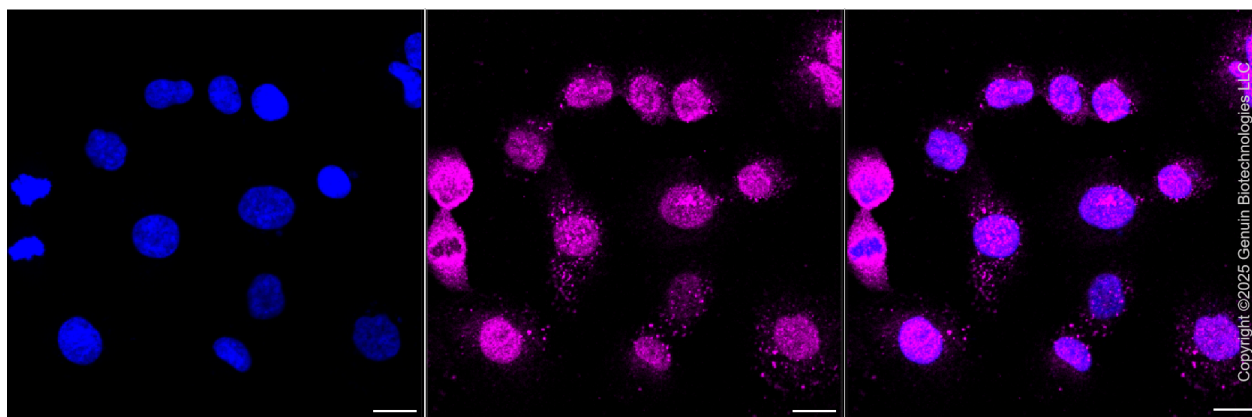
#### SUPPORT

SUPPORT@GENUINBIOTECH.COM  
TEL: +1-540-855-7041

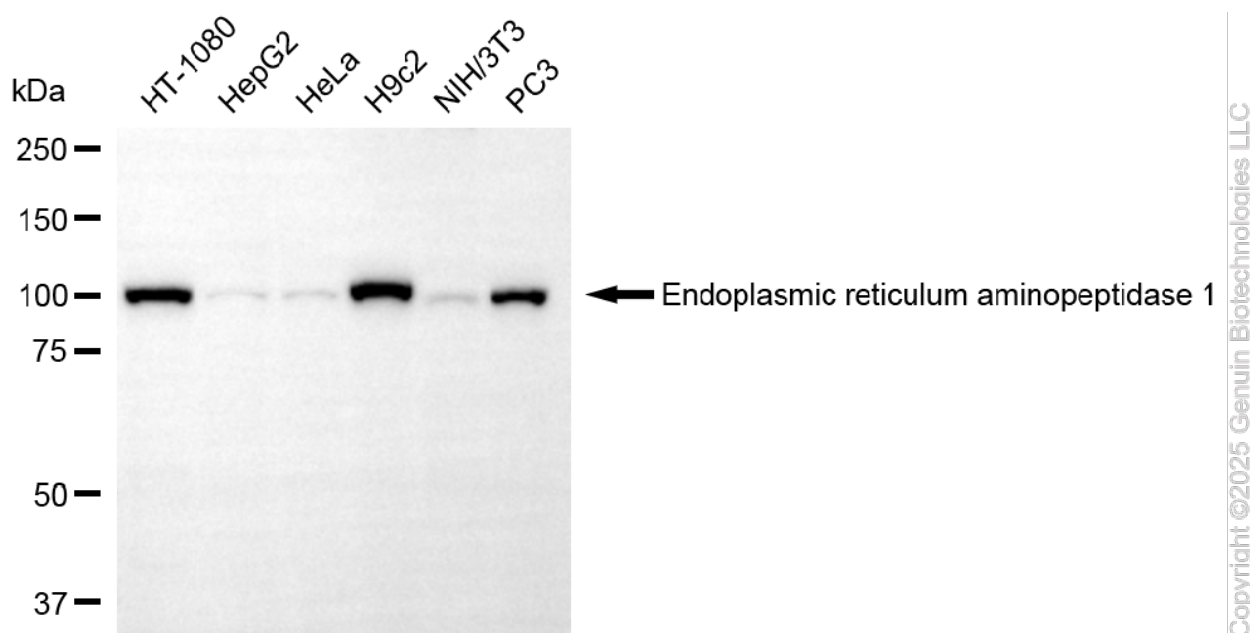
#### ORDERS

SALES@GENUINBIOTECH.COM  
FAX: +1-540-855-7041

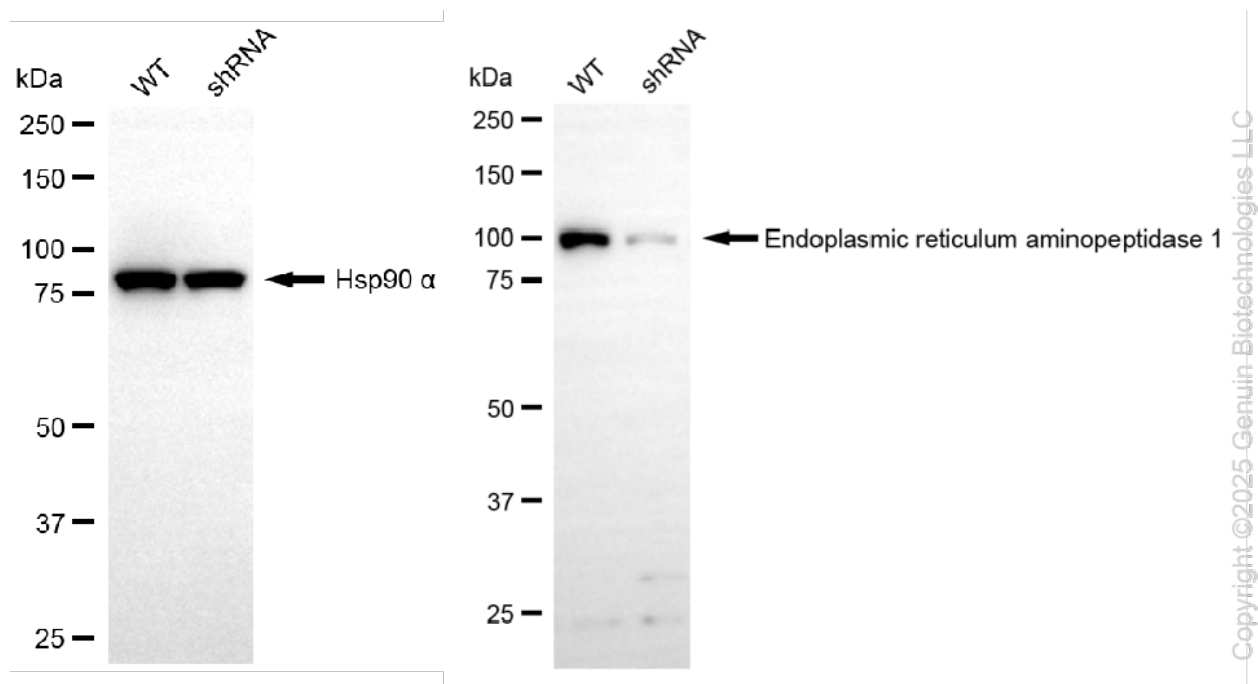
[WWW.GENUINBIOTECH.COM](http://WWW.GENUINBIOTECH.COM)



Immunocytochemical staining of HT-1080 cells with anti-Endoplasmic reticulum aminopeptidase 1 antibody (Cat#61531, 1:1,000). Nuclei were stained blue with DAPI; Endoplasmic reticulum aminopeptidase 1 was stained magenta with Alexa Fluor® 647. Images were taken using Leica stellaris 5. Protein abundance based on laser Intensity and smart gain: Medium. Scale bar, 20  $\mu$ m.



Western blotting analysis using anti-endoplasmic reticulum aminopeptidase 1 antibody (Cat#61531). Total cell lysates (30  $\mu$ g) from various cell lines were loaded and separated by SDS-PAGE. The blot was incubated with anti-endoplasmic reticulum aminopeptidase 1 antibody (Cat#61531, 1:5,000) and HRP-conjugated goat anti-rabbit secondary antibody (Cat#201, 1:20,000) respectively. Image was developed using NaQ™ ECL Substrate Kit (Cat#716).



Western blotting analysis using anti-endoplasmic reticulum aminopeptidase 1 antibody (Cat#61531). Endoplasmic reticulum aminopeptidase 1 expression in wild-type (WT) and endoplasmic reticulum aminopeptidase 1 (ERAP1) shRNA knockdown (KD) HT-1080 cells with 20  $\mu$ g of total cell lysates. Hsp90  $\alpha$  serves as a loading control. The blot was incubated with anti-endoplasmic reticulum aminopeptidase 1 antibody (Cat#61531, 1:5,000) and HRP-conjugated goat anti-rabbit secondary antibody (Cat#201, 1:20,000) respectively. Image was developed using NaQ<sup>TM</sup> ECL Substrate Kit (Cat#716).