

KD-Validated Anti-Superoxide Dismutase 1 Recombinant Rabbit Monoclonal Antibody



Catalog #: 61534

Aliases

SOD1; Superoxide Dismutase 1; IPOA; Superoxide Dismutase 1, Soluble; Superoxide Dismutase [Cu-Zn]; EC 1.15.1.1; HSod1; ALS1; ALS; Amyotrophic Lateral Sclerosis 1 (Adult); Epididymis Secretory Protein Li 44; Superoxide Dismutase, Cytosolic; Cu/Zn Superoxide Dismutase; Indophenoloxidase A; SOD, Soluble; Homodimer; HEL-S-44; STAHP; SOD

Background

Gene Name: SOD1

NCBI Gene Entry: [6647](#)

UniProt Entry: [P00441](#)

Application Information

Molecular Weight: Predicted, 16 kDa; observed, 18 kDa

Clonality: Rabbit monoclonal antibody

Clone ID: 25GB2685

Species Reactivity: Human

Applications Tested: Western blotting (WB), flow cytometry (FCM), immunocytochemistry (IC)

Immunogen

A synthesized peptide derived from human SOD1

Isotype

Rabbit IgG

Storage Buffer

Supplied in PBS (pH 7.4) containing 50% glycerol, and 0.02% sodium azide.

Storage

Store at -20 °C for one year.

Recommended Dilutions

Western blotting (WB): 1:1,000-1:5,000

Flow Cytometry (FCM): 1:2,000

Immunocytochemistry (IC): 1:100-1:1,000

SUPPORT

SUPPORT@GENUINBIOTECH.COM
TEL: +1-540-855-7041

ORDERS

SALES@GENUINBIOTECH.COM
FAX: +1-540-855-7041

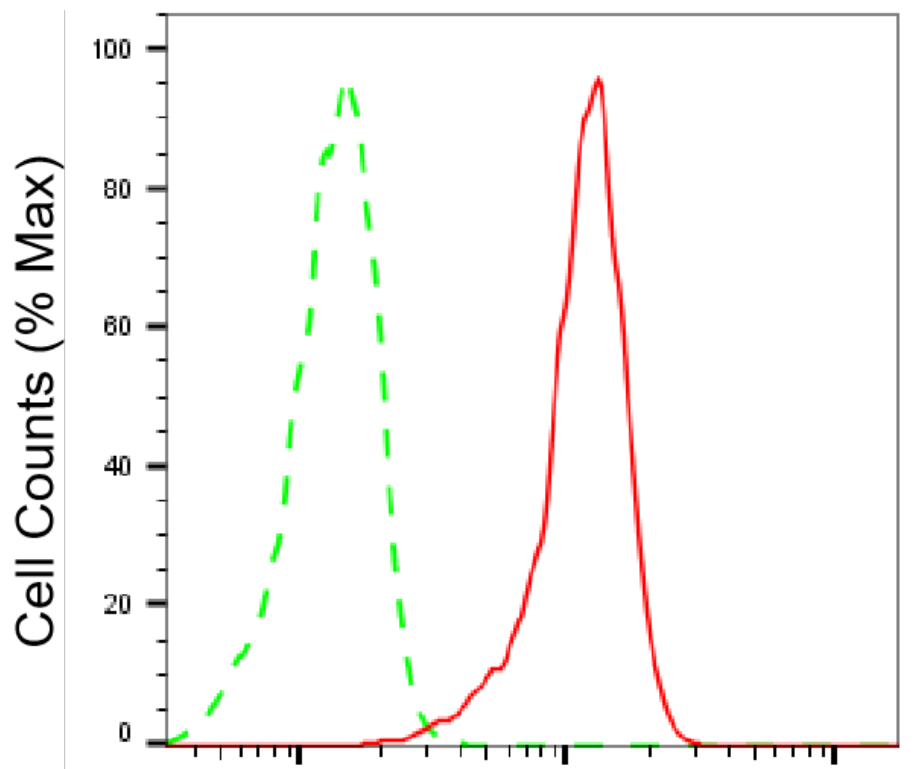
WWW.GENUINBIOTECH.COM

KD-Validated Anti-Superoxide Dismutase 1 Recombinant Rabbit Monoclonal Antibody

PAGE 2

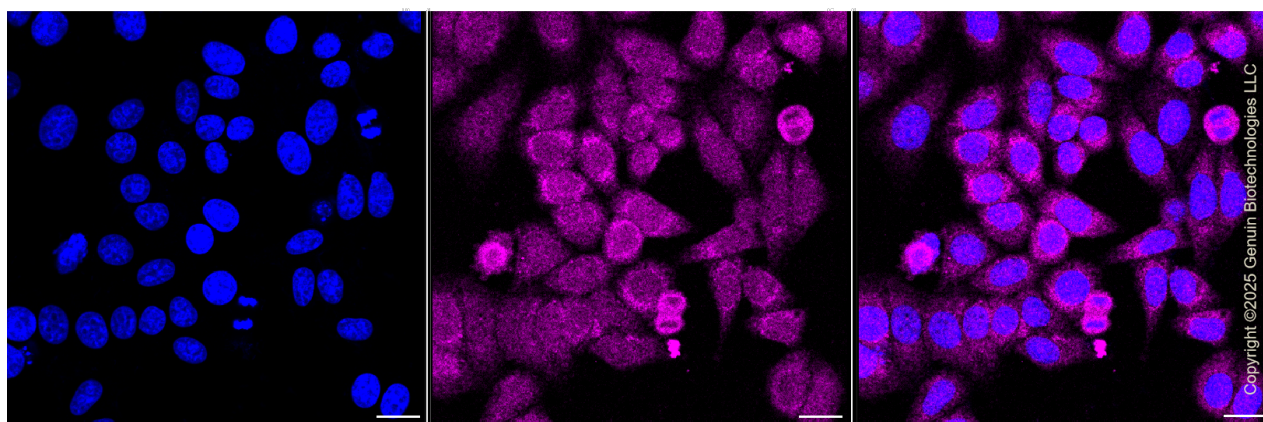
Note: This product is for research use only.

Validation Data



Superoxide Dismutase 1-Alexa Fluor® 647

Flow cytometric analysis of Superoxide Dismutase 1 expression in HepG2 cells using anti-Superoxide Dismutase 1 antibody (Cat#61534, 1:2,000). Green, isotype control; red, Superoxide Dismutase 1.



Immunocytochemical staining of HepG2 cells with anti-Superoxide dismutase 1 antibody (Cat#61534, 1:1,000). Nuclei were stained blue with DAPI; Superoxide dismutase 1 was stained

SUPPORT

SUPPORT@GENUINBIOTECH.COM
TEL: +1-540-855-7041

ORDERS

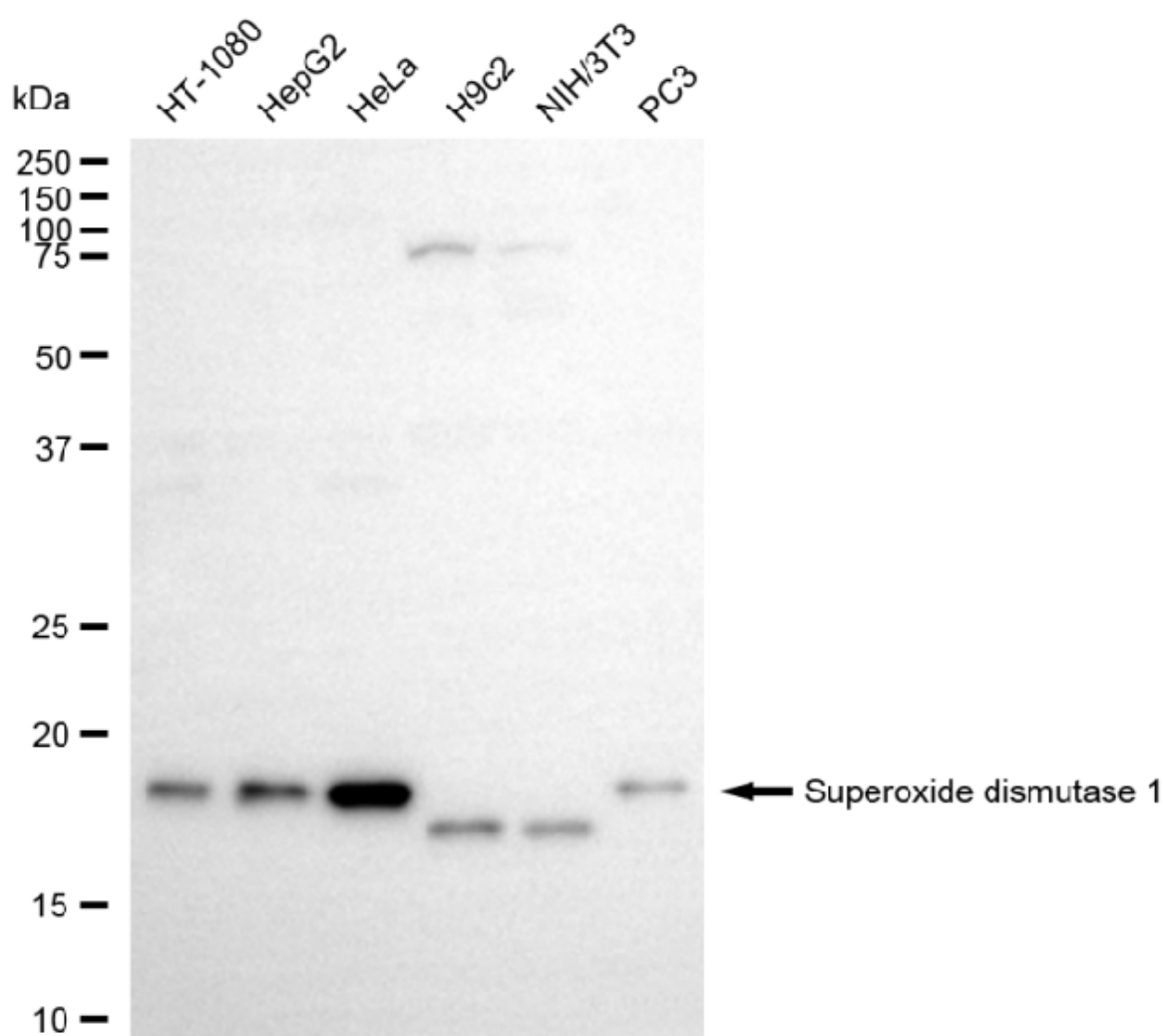
SALES@GENUINBIOTECH.COM
FAX: +1-540-855-7041

WWW.GENUINBIOTECH.COM

KD-Validated Anti-Superoxide Dismutase 1 Recombinant Rabbit Monoclonal Antibody

PAGE 3

magenta with Alexa Fluor® 647. Images were taken using Leica stellaris 5. Protein abundance based on laser Intensity and smart gain: Medium. Scale bar, 20 µm.



Copyright ©2025 Genuin Biotechnologies LLC

Western blotting analysis using anti-superoxide dismutase 1 antibody (Cat#61534). Total cell lysates (30 µg) from various cell lines were loaded and separated by SDS-PAGE. The blot was incubated with anti-superoxide dismutase 1 antibody (Cat#61534, 1:5,000) and HRP-conjugated goat anti-rabbit secondary antibody (Cat#201, 1:20,000) respectively. Image was developed using NaQ™ ECL Substrate Kit (Cat#716).

SUPPORT

SUPPORT@GENUINBIOTECH.COM
TEL: +1-540-855-7041

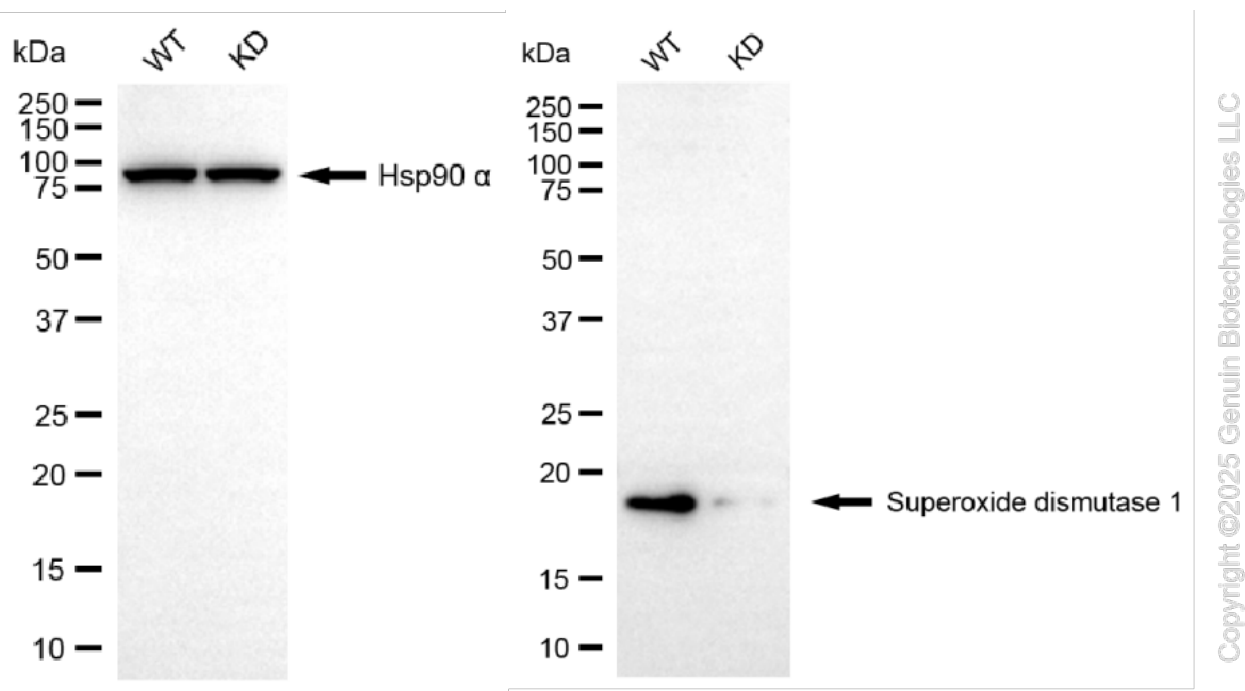
ORDERS

SALES@GENUINBIOTECH.COM
FAX: +1-540-855-7041

WWW.GENUINBIOTECH.COM

KD-Validated Anti-Superoxide Dismutase 1 Recombinant Rabbit Monoclonal Antibody

PAGE 4



Western blotting analysis using anti-superoxide dismutase 1 antibody (Cat#61534). Superoxide dismutase 1 expression in wild-type (WT) and superoxide dismutase 1 (SOD1) knockdown (KD) HSHC cells with 20 µg of total cell lysates. Hsp90 α serves as a loading control. The blot was incubated with anti-superoxide dismutase 1 antibody (Cat#61534, 1:5,000) and HRP-conjugated goat anti-rabbit secondary antibody (Cat#201, 1:20,000) respectively. Image was developed using NaQ™ ECL Substrate Kit (Cat#716).

SUPPORT

SUPPORT@GENUINBIOTECH.COM
TEL: +1-540-855-7041

ORDERS

SALES@GENUINBIOTECH.COM
FAX: +1-540-855-7041

WWW.GENUINBIOTECH.COM