

# KD-Validated Anti-Tripartite Motif Containing 25 Recombinant Rabbit Monoclonal Antibody



**Catalog #: 61535**

## Aliases

TRIM25; Tripartite Motif Containing 25; RNF147; EFP; ZNF147; Zinc Finger Protein 147 (Estrogen-Responsive Finger Protein); RING-Type E3 Ubiquitin Transferase TRIM25; Ubiquitin/ISG15-Conjugating Enzyme TRIM25; Tripartite Motif-Containing Protein 25; Estrogen-Responsive Finger Protein; E3 Ubiquitin/ISG15 Ligase TRIM25; RING Finger Protein 147; RING-Type E3 Ubiquitin Transferase; Tripartite Motif Protein TRIM25; Tripartite Motif-Containing 25; Zinc Finger Protein-147; Zinc Finger Protein 147; EC 6.3.2.N3; EC 2.3.2.27; Z147

## Background

Gene Name: TRIM25

NCBI Gene Entry: [7706](#)

UniProt Entry: [Q14258](#)

## Application Information

Molecular Weight: Predicted, 71 kDa, observed, 71 kDa

Clonality: Rabbit monoclonal antibody

Clone ID: 25GB2695

Species Reactivity: Human, rat

Applications Tested: Western blotting (WB), flow cytometry (FCM), immunocytochemistry (IC)

## Immunogen

A synthesized peptide derived from human TRIM25

## Isotype

Rabbit IgG

## Storage Buffer

Supplied in PBS (pH 7.4) containing 50% glycerol, and 0.02% sodium azide.

## Storage

Store at -20 °C for one year.

## Recommended Dilutions

Western blotting (WB): 1:1,000-1:5,000

Flow Cytometry (FCM): 1:2,000

Immunocytochemistry (IC): 1:100-1:1,000

---

### SUPPORT

SUPPORT@GENUINBIOTECH.COM  
TEL: +1-540-855-7041

### ORDERS

SALES@GENUINBIOTECH.COM  
FAX: +1-540-855-7041

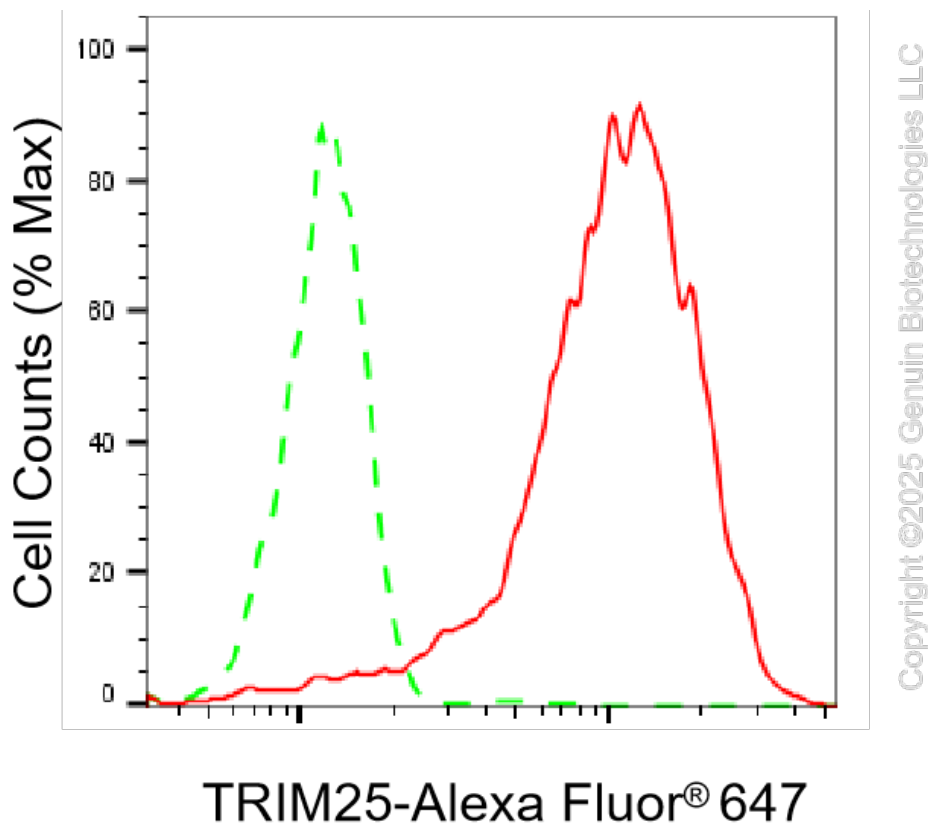
[WWW.GENUINBIOTECH.COM](http://WWW.GENUINBIOTECH.COM)

# KD-Validated Anti-Tripartite Motif Containing 25 Recombinant Rabbit Monoclonal Antibody

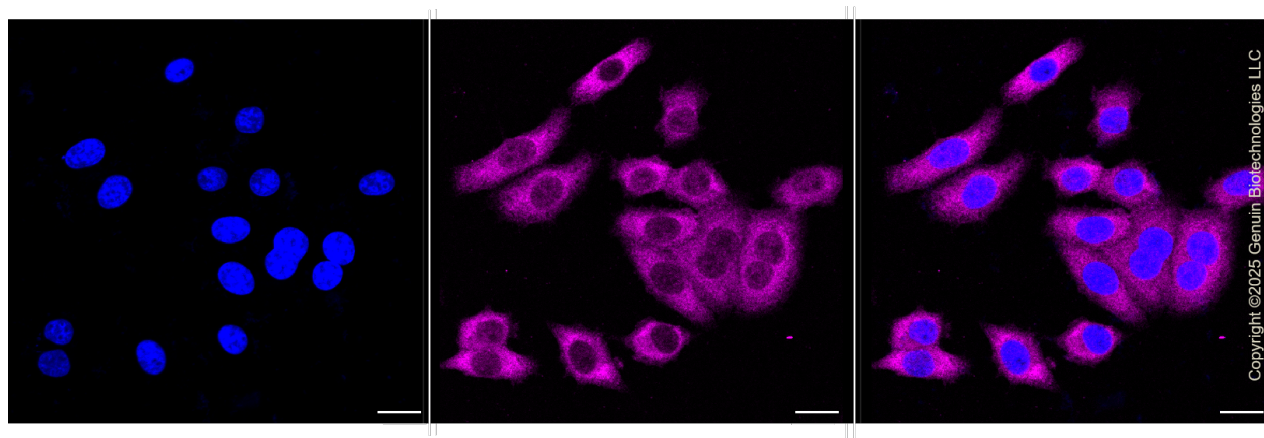
PAGE 2

**Note:** This product is for research use only.

## Validation Data



Flow cytometric analysis of TRIM25 expression in HepG2 cells using anti-TRIM25 antibody (Cat#61535, 1:2,000). Green, isotype control; red, TRIM25.



Immunocytochemical staining of HepG2 cells with anti-TRIM25 antibody (Cat#61535, 1:1,000). Nuclei were stained blue with DAPI; TRIM25 was stained magenta with Alexa Fluor® 647. Images were taken using Leica stellaris 5. Protein abundance based on laser Intensity and smart

### SUPPORT

SUPPORT@GENUINBIOTECH.COM  
TEL: +1-540-855-7041

### ORDERS

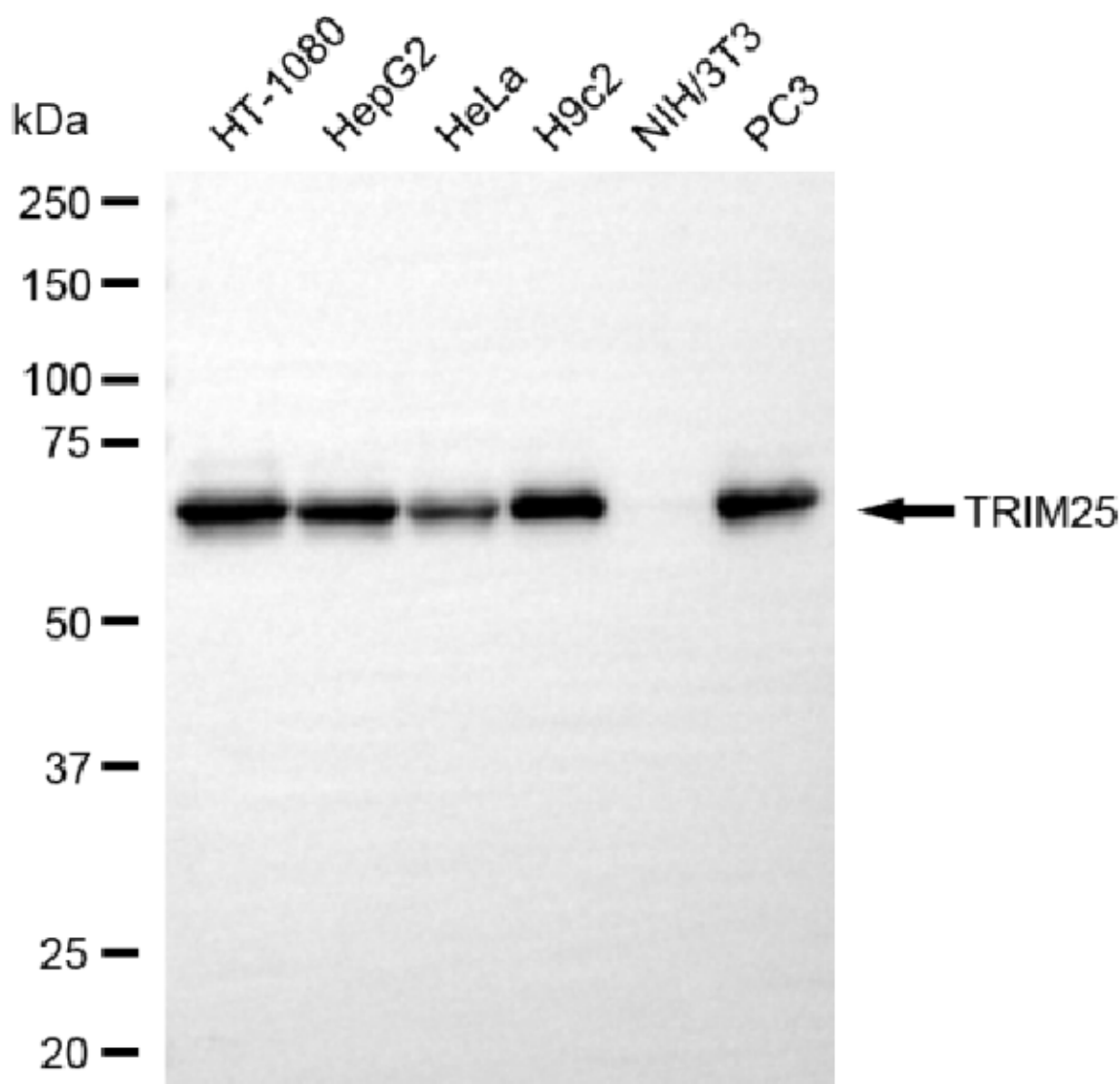
SALES@GENUINBIOTECH.COM  
FAX: +1-540-855-7041

[WWW.GENUINBIOTECH.COM](http://WWW.GENUINBIOTECH.COM)

## KD-Validated Anti-Tripartite Motif Containing 25 Recombinant Rabbit Monoclonal Antibody

PAGE 3

gain: High. Scale bar, 20  $\mu$ m.



Copyright ©2025 Genuin Biotechnologies LLC

Western blotting analysis using anti-TRIM25 antibody (Cat#61535). Total cell lysates (30  $\mu$ g) from various cell lines were loaded and separated by SDS-PAGE. The blot was incubated with anti-TRIM25 antibody (Cat#61535, 1:5,000) and HRP-conjugated goat anti-rabbit secondary antibody (Cat#201, 1:20,000) respectively. Image was developed using NaQ™ ECL Substrate Kit (Cat#716).

### SUPPORT

SUPPORT@GENUINBIOTECH.COM  
TEL: +1-540-855-7041

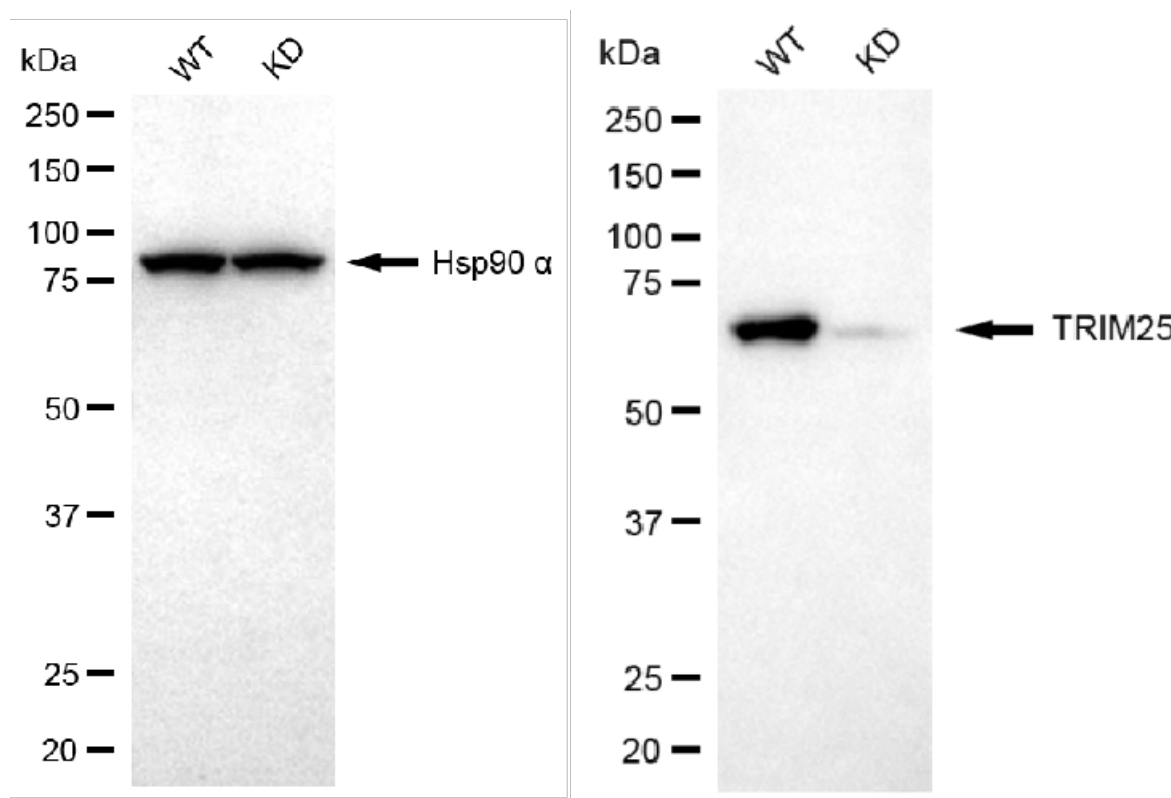
### ORDERS

SALES@GENUINBIOTECH.COM  
FAX: +1-540-855-7041

WWW.GENUINBIOTECH.COM

## KD-Validated Anti-Tripartite Motif Containing 25 Recombinant Rabbit Monoclonal Antibody

PAGE 4



Copyright ©2025 Genuin Biotechnologies LLC

Western blotting analysis using anti-TRIM25 antibody (Cat#61535). TRIM25 expression in wild-type (WT) and TRIM25 knockdown (KD) HeLa cells with 20 µg of total cell lysates. Hsp90 α serves as a loading control. The blot was incubated with anti-TRIM25 antibody (Cat#61535, 1:5,000) and HRP-conjugated goat anti-rabbit secondary antibody (Cat#201, 1:20,000) respectively. Image was developed using NaQ™ ECL Substrate Kit (Cat#716).

### SUPPORT

SUPPORT@GENUINBIOTECH.COM  
TEL: +1-540-855-7041

### ORDERS

SALES@GENUINBIOTECH.COM  
FAX: +1-540-855-7041

[WWW.GENUINBIOTECH.COM](http://WWW.GENUINBIOTECH.COM)