

# KD-Validated Anti-GAPDH Mouse Monoclonal Antibody



**Catalog #: 61536**

## Aliases

GAPDH; Glyceraldehyde-3-Phosphate Dehydrogenase; GAPD; Peptidyl-Cysteine S-Nitrosylase GAPDH; EC 1.2.1.12; Epididymis Secretory Sperm Binding Protein Li 162eP; Oct1 Coactivator In S Phase, 38 Kd Component; Aging-Associated Gene 9 Protein; OCAS, P38 Component; HEL-S-162eP; EC 2.6.99.-; EC 1.2.1; G3PD

## Background

Gene Name: GAPDH

NCBI Gene Entry: [2597](#)

UniProt Entry: [P04406](#)

## Application Information

Molecular Weight: Predicted, 36 kDa; observed, 35 kDa

Clonality: Mouse monoclonal antibody

Clone ID: 25GB2715

Species Reactivity: Human

Applications Tested: Western blotting (WB), flow cytometry (FCM), immunocytochemistry (IC)

## Immunogen

Recombinant protein of human GAPDH

## Isotype

Mouse IgG1 kappa

## Storage Buffer

Supplied in PBS (pH 7.4) containing 50% glycerol, and 0.02% sodium azide.

## Storage

Store at -20 °C for one year.

## Recommended Dilutions

Western blotting (WB): 1:1,000-1:5,000

Flow Cytometry (FCM): 1:2,000

Immunocytochemistry (IC): 1:100-1:1,000

---

### SUPPORT

SUPPORT@GENUINBIOTECH.COM  
TEL: +1-540-855-7041

### ORDERS

SALES@GENUINBIOTECH.COM  
FAX: +1-540-855-7041

[WWW.GENUINBIOTECH.COM](http://WWW.GENUINBIOTECH.COM)

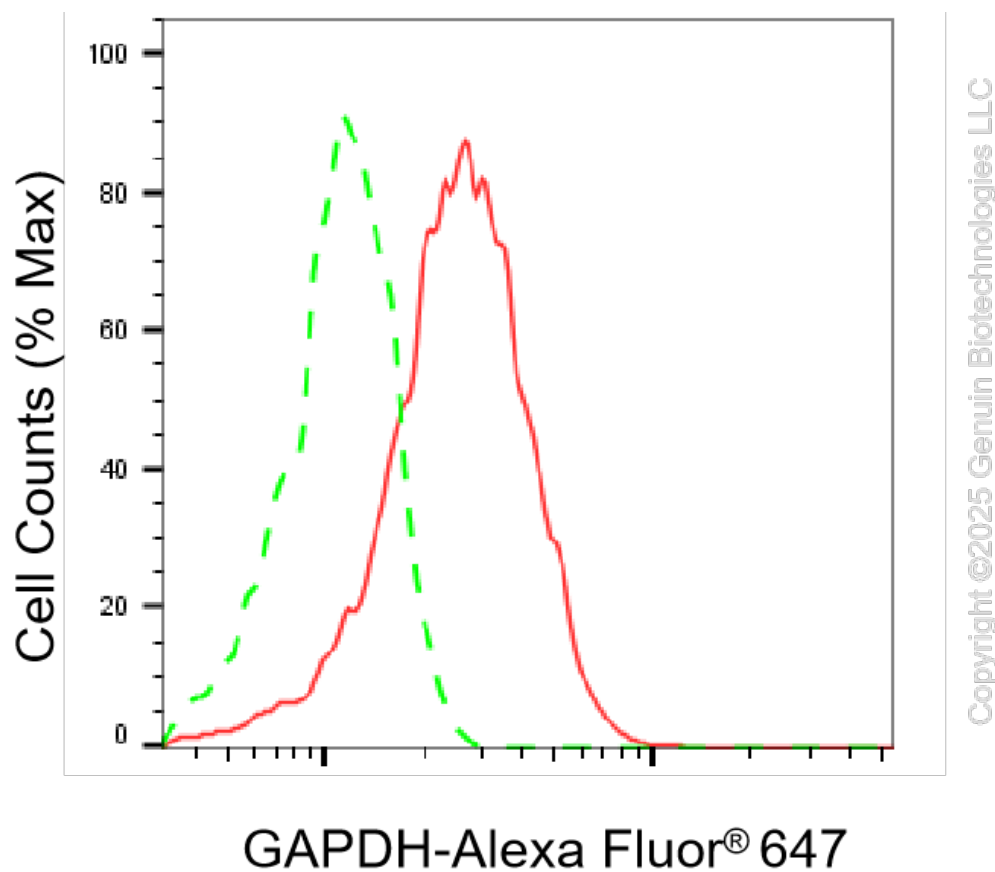


## KD-Validated Anti-GAPDH Mouse Monoclonal Antibody

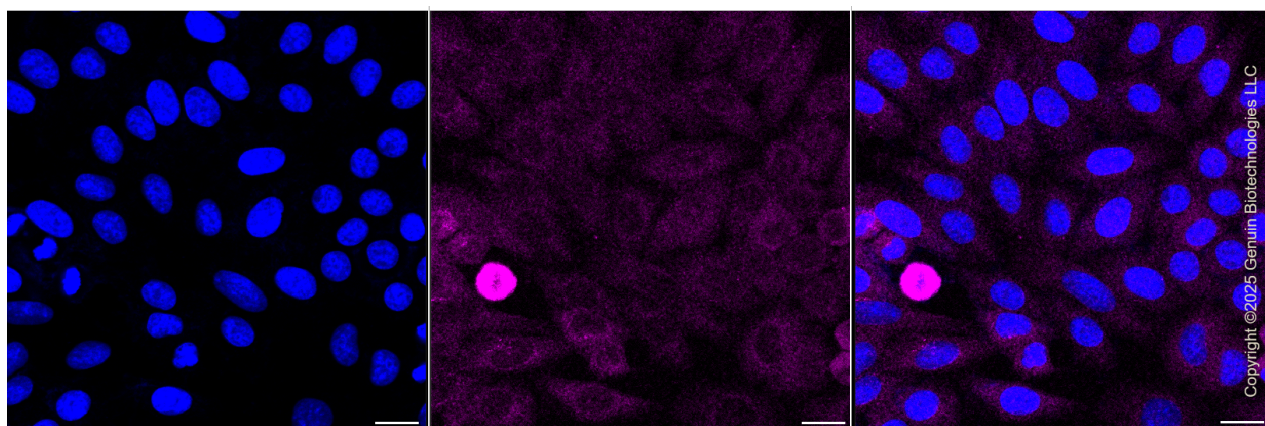
PAGE 2

**Note:** This product is for research use only.

### Validation Data



Flow cytometric analysis of GAPDH expression in HepG2 cells using anti-GAPDH antibody (Cat#61536, 1:2,000). Green, isotype control; red, GAPDH.



Immunocytochemical staining of HepG2 cells with anti-GAPDH antibody (Cat#61536, 1:1,000). Nuclei were stained blue with DAPI; GAPDH was stained magenta with Alexa Fluor® 647. Images were taken using Leica stellaris 5. Protein abundance based on laser Intensity and smart

#### SUPPORT

SUPPORT@GENUINBIOTECH.COM  
TEL: +1-540-855-7041

#### ORDERS

SALES@GENUINBIOTECH.COM  
FAX: +1-540-855-7041

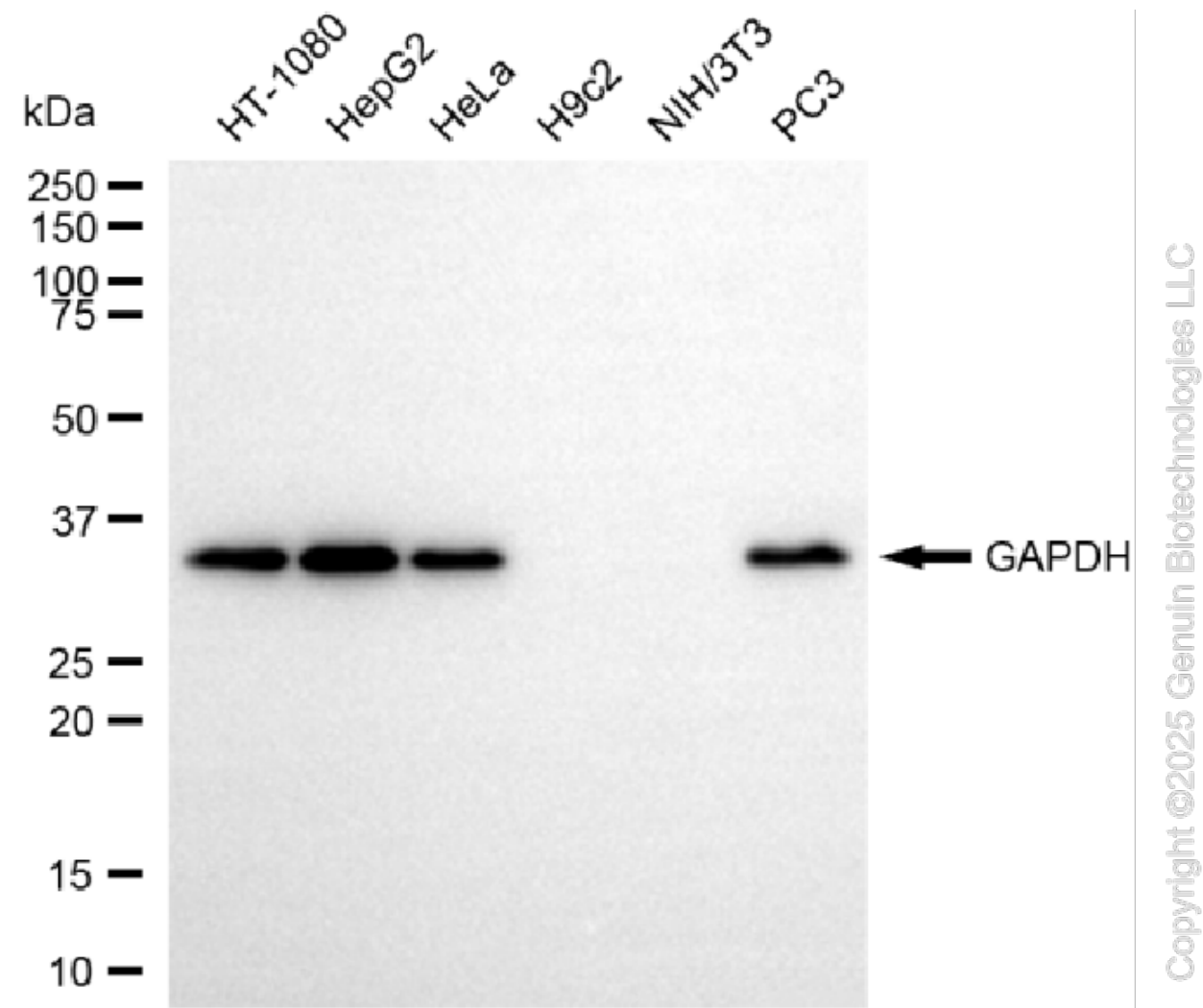
[WWW.GENUINBIOTECH.COM](http://WWW.GENUINBIOTECH.COM)



## KD-Validated Anti-GAPDH Mouse Monoclonal Antibody

PAGE 3

gain: Low. Scale bar, 20  $\mu$ m.



Western blotting analysis using anti-GAPDH antibody (Cat#61536). Total cell lysates (30  $\mu$ g) from various cell lines were loaded and separated by SDS-PAGE. The blot was incubated with anti-GAPDH antibody (Cat#61536, 1:5,000) and HRP-conjugated goat anti-mouse secondary antibody (Cat#101, 1:20,000) respectively. Image was developed using FeQ™ ECL Substrate Kit (Cat#226).

### SUPPORT

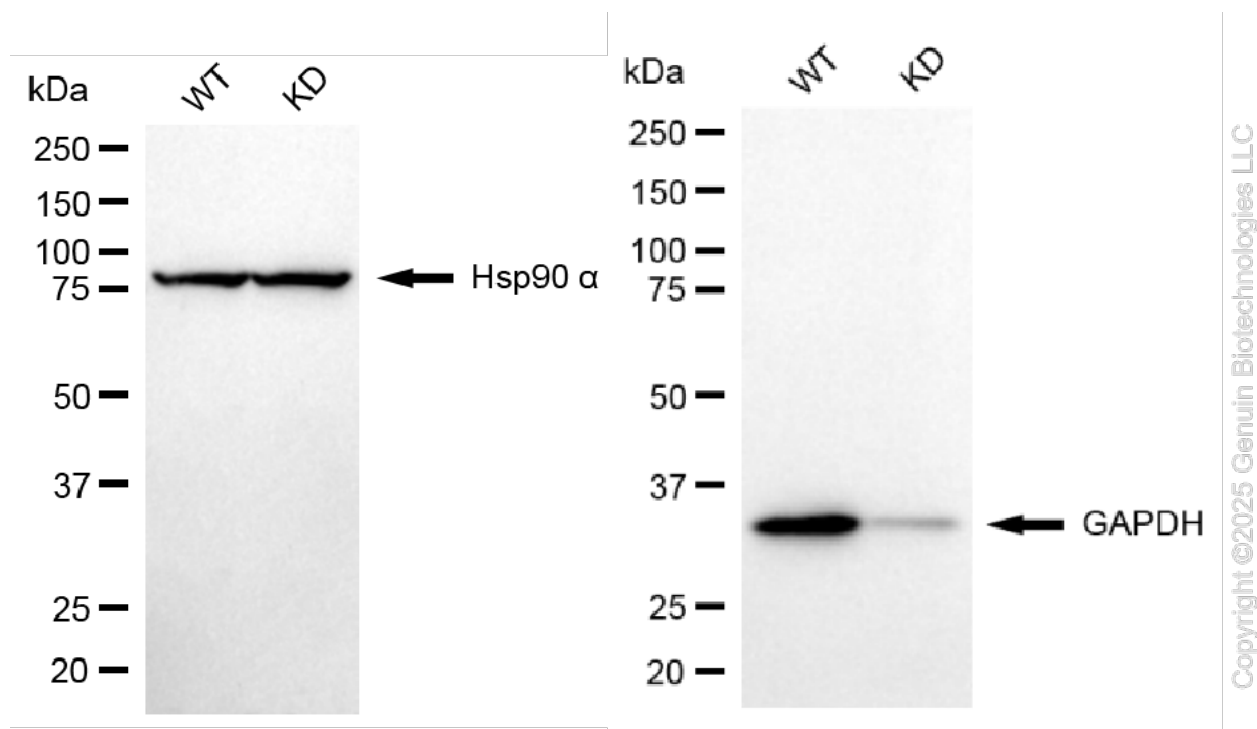
SUPPORT@GENUINBIOTECH.COM  
TEL: +1-540-855-7041

### ORDERS

SALES@GENUINBIOTECH.COM  
FAX: +1-540-855-7041

[WWW.GENUINBIOTECH.COM](http://WWW.GENUINBIOTECH.COM)





Western blotting analysis using anti-GAPDH antibody (Cat#61536). GAPDH expression in wild type (WT) and GAPDH knockdown (KD) HSHC cells with 20 µg of total cell lysates. Hsp90 α serves as a loading control. The blot was incubated with anti-GAPDH antibody (Cat#61536, 1:5,000) and HRP-conjugated goat anti-mouse secondary antibody (Cat#101, 1:20,000) respectively. Image was developed using NaQ™ ECL Substrate Kit (Cat#716).