

KD-Validated Anti-ALPP Mouse Monoclonal Antibody



Catalog #: 61537

Aliases

ALPP; Alkaline Phosphatase, Placental; PLAP; PALP; Alkaline Phosphatase, Placental Type; Alkaline Phosphatase Regan Isozyme; Placental Alkaline Phosphatase 1; EC 3.1.3.1; PLAP-1; Alkaline Phosphatase, Placental (Regan Isozyme); Intestinal-Type Alkaline Phosphatase; Intestinal Alkaline Phosphatase; Placental Alkaline Phosphatase; Alkaline Phosphomonoesterase; Glycerophosphatase; Regan Isozyme; ALPI; ALP; IAP

Background

Gene Name: ALPP

NCBI Gene Entry: [250](#)

UniProt Entry: [P05187](#)

Application Information

Molecular Weight: Predicted, 58 kDa; observed, 70 kDa

Clonality: Mouse monoclonal antibody

Clone ID: 25GB2720

Species Reactivity: Human

Applications Tested: Western blotting (WB)

Immunogen

A synthesized peptide derived from human ALPP

Isotype

Mouse IgG1

Storage Buffer

Supplied in PBS (pH 7.4) containing 50% glycerol, and 0.02% sodium azide.

Storage

Store at -20 °C for one year.

Recommended Dilutions

Western Blotting (WB): 1:400-1:2,000

Note: This product is for research use only.

SUPPORT

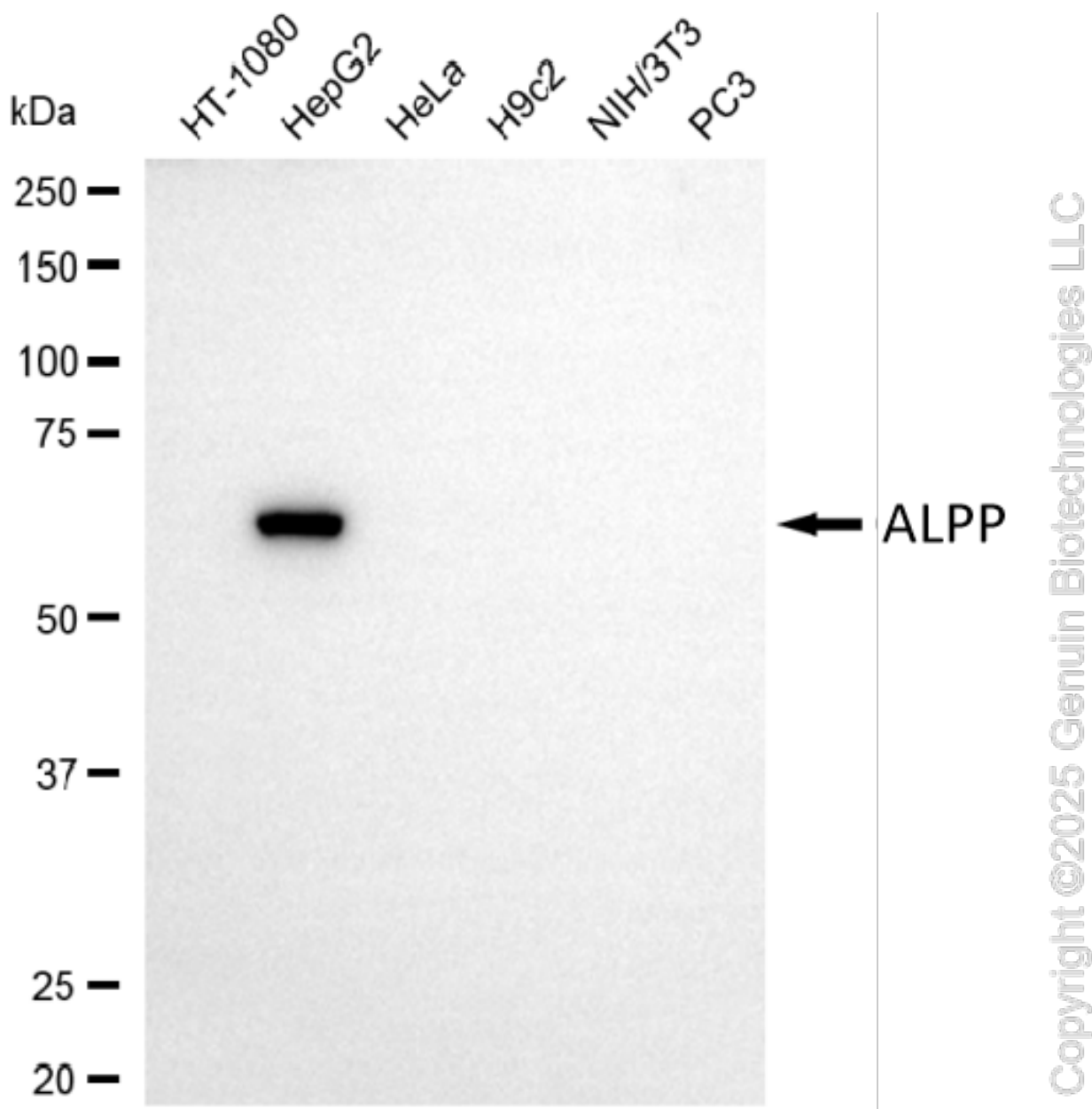
SUPPORT@GENUINBIOTECH.COM
TEL: +1-540-855-7041

ORDERS

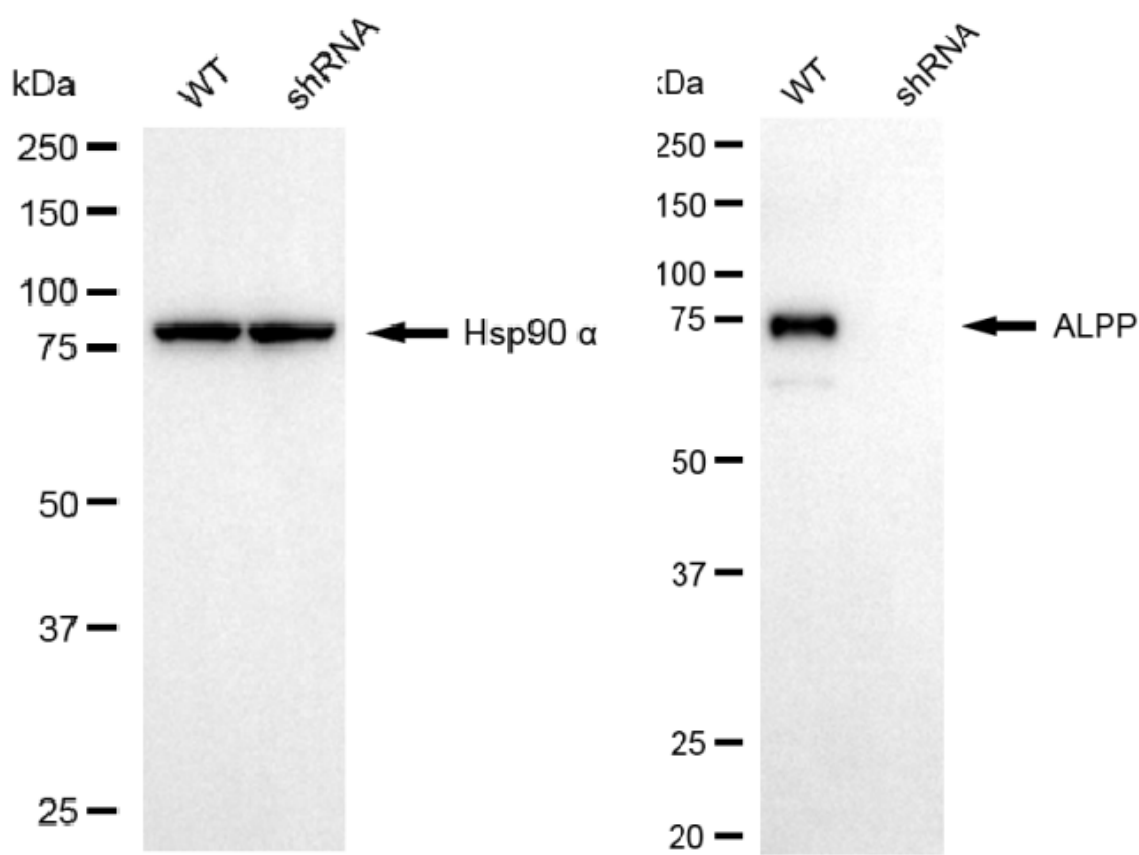
SALES@GENUINBIOTECH.COM
FAX: +1-540-855-7041

WWW.GENUINBIOTECH.COM

Validation Data



Western blotting analysis using anti-ALPP antibody (Cat#61537). Total cell lysates (30 μ g) from various cell lines were loaded and separated by SDS-PAGE. The blot was incubated with anti-ALPP antibody (Cat#61537, 1:2,000) and HRP-conjugated goat anti-mouse secondary antibody (Cat#101, 1:20,000) respectively. Image was developed using NaQ™ ECL Substrate Kit (Cat#716).



Copyright ©2025 Genuin Biotechnologies LLC

Western blotting analysis using anti-ALPP antibody (Cat#61537). ALPP expression in wild-type (WT) and ALPP shRNA knockdown (KD) HeLa cells with 20 µg of total cell lysates. Hsp90 α serves as a loading control. The blot was incubated with anti-ALPP antibody (Cat#61537, 1:5,000) and HRP-conjugated goat anti-mouse secondary antibody (Cat#101, 1:20,000) respectively. Image was developed using NaQ™ ECL Substrate Kit (Cat#716).