

KD-Validated Anti-Vimentin Mouse Monoclonal Antibody



Catalog #: 61538

Aliases

VIM; Vimentin; Epididymis Secretory Sperm Binding Protein

Background

Gene Name: VIM

NCBI Gene Entry: [7431](#)

UniProt Entry: [P08670](#)

Application Information

Molecular Weight: Predicted, 54 kDa; observed, 56 kDa

Clonality: Mouse monoclonal antibody

Clone ID: 25GB2725

Species Reactivity: Human, mouse, rat

Applications Tested: Western blotting (WB), flow cytometry (FCM), immunocytochemistry (IC), immunohistochemistry (IHC)

Immunogen

Recombinant protein of human Vimentin

Isotype

Mouse IgM kappa

Storage Buffer

Supplied in PBS (pH 7.4) containing 50% glycerol, and 0.02% sodium azide.

Storage

Store at -20 °C for one year.

Recommended Dilutions

Western Blotting (WB): 1:1,000-1:5,000

Flow Cytometry (FCM): 1:2,000

Immunocytochemistry (IC): 1:100-1:1,000

Immunohistochemistry (IHC): 1:50-1:100

Note: This product is for research use only.

SUPPORT

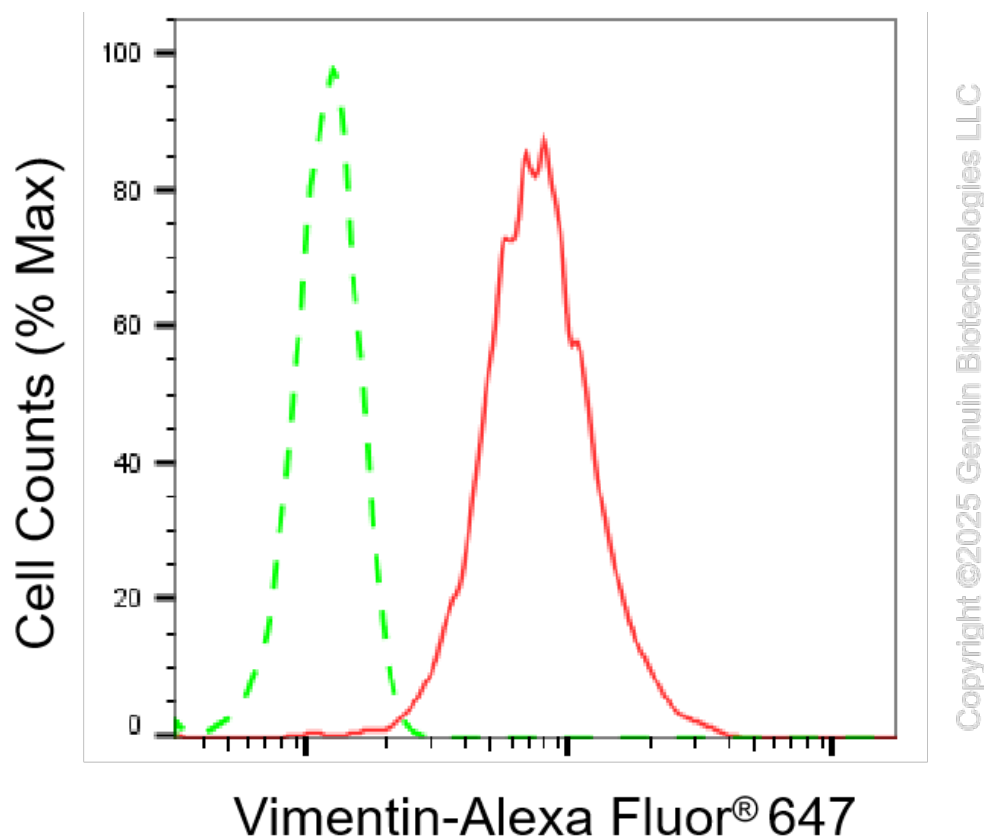
SUPPORT@GENUINBIOTECH.COM
TEL: +1-540-855-7041

ORDERS

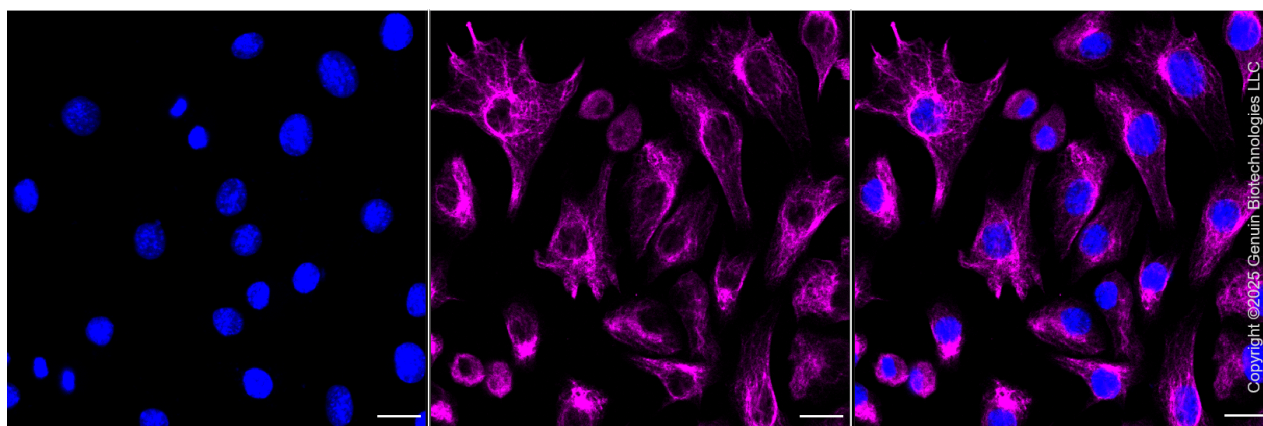
SALES@GENUINBIOTECH.COM
FAX: +1-540-855-7041

WWW.GENUINBIOTECH.COM

Validation Data



Flow cytometric analysis of vimentin expression in C2C12 cells using anti-vimentin antibody (Cat#61538, 1:2,000). Green, isotype control; red, vimentin.



Immunocytochemical staining of C2C12 cells with anti-Vimentin antibody (Cat#61538, 1:1,000). Nuclei were stained blue with DAPI; Vimentin was stained magenta with Alexa Fluor® 647. Images were taken using Leica stellaris 5. Protein abundance based on laser Intensity and smart gain: High. Scale bar, 20 μ m.

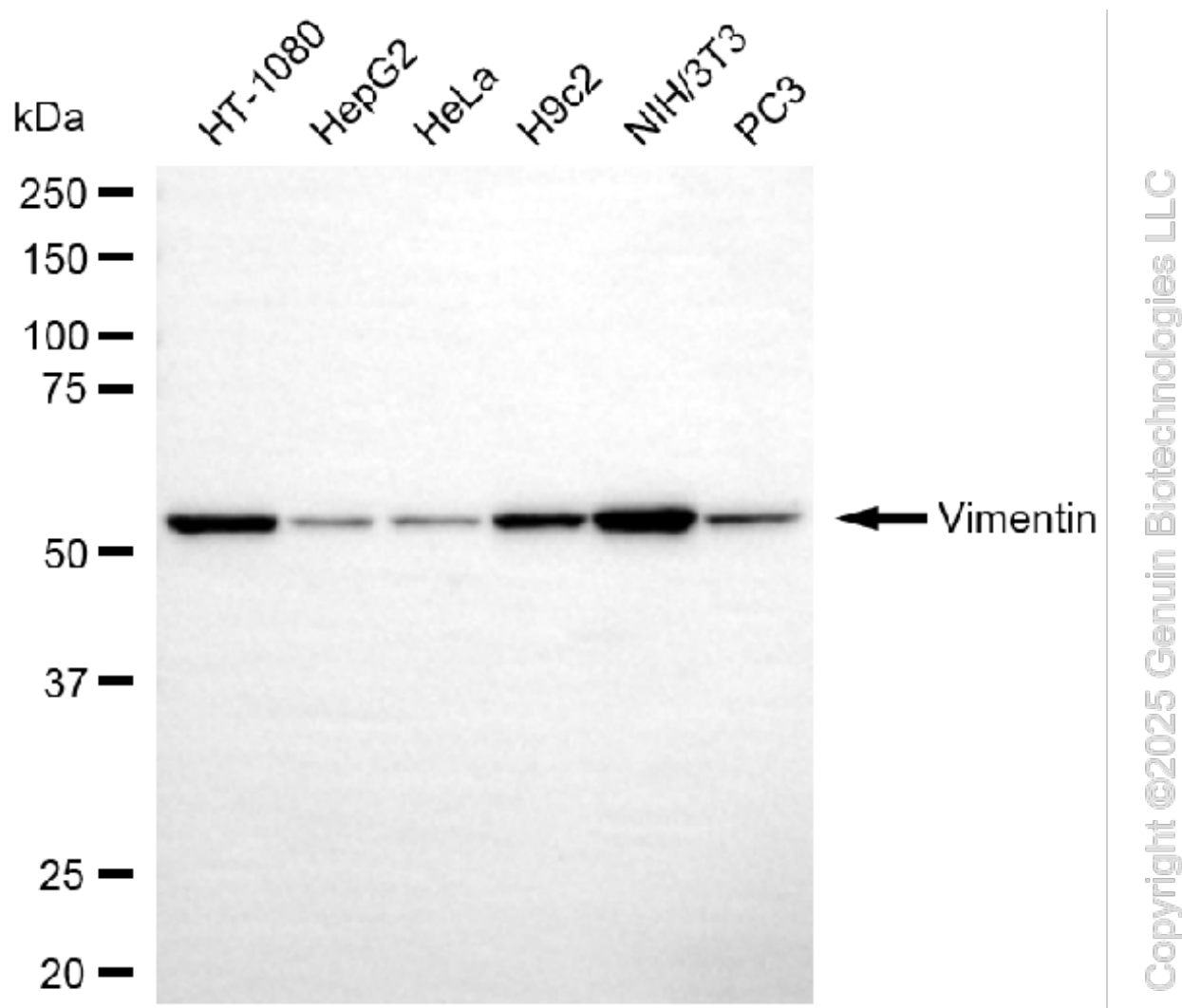
SUPPORT

SUPPORT@GENUINBIOTECH.COM
TEL: +1-540-855-7041

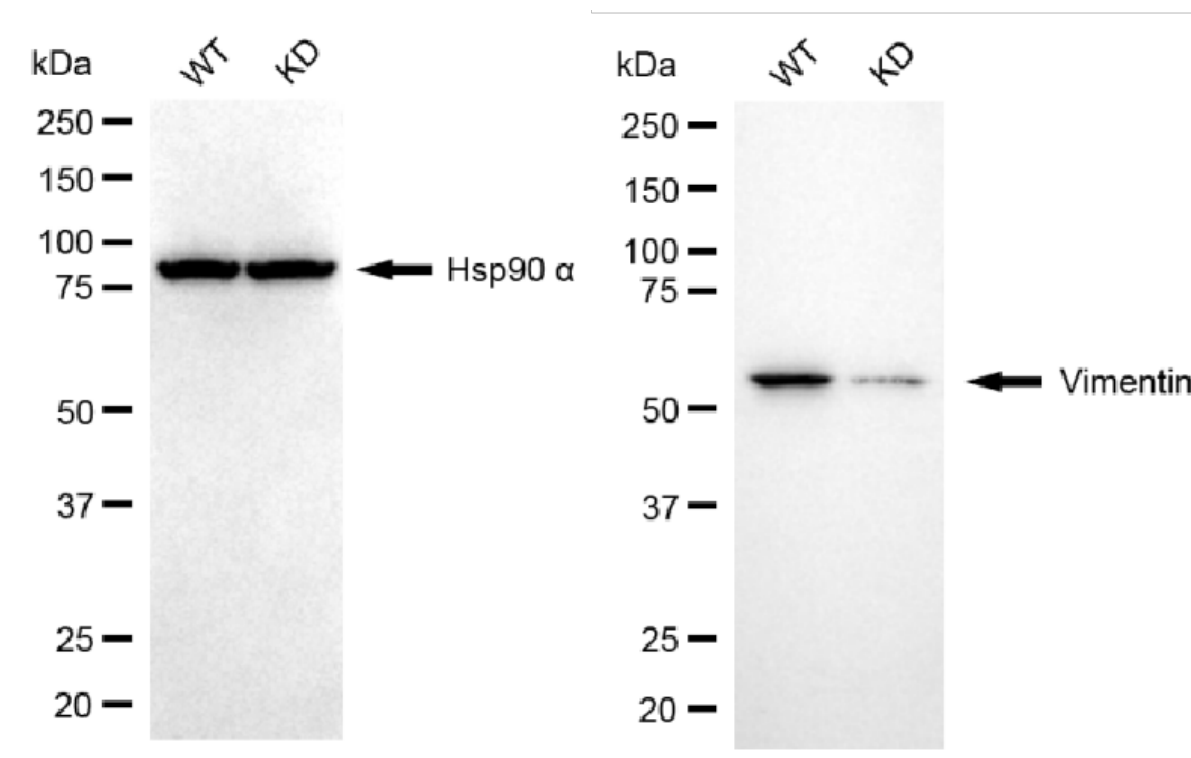
ORDERS

SALES@GENUINBIOTECH.COM
FAX: +1-540-855-7041

WWW.GENUINBIOTECH.COM

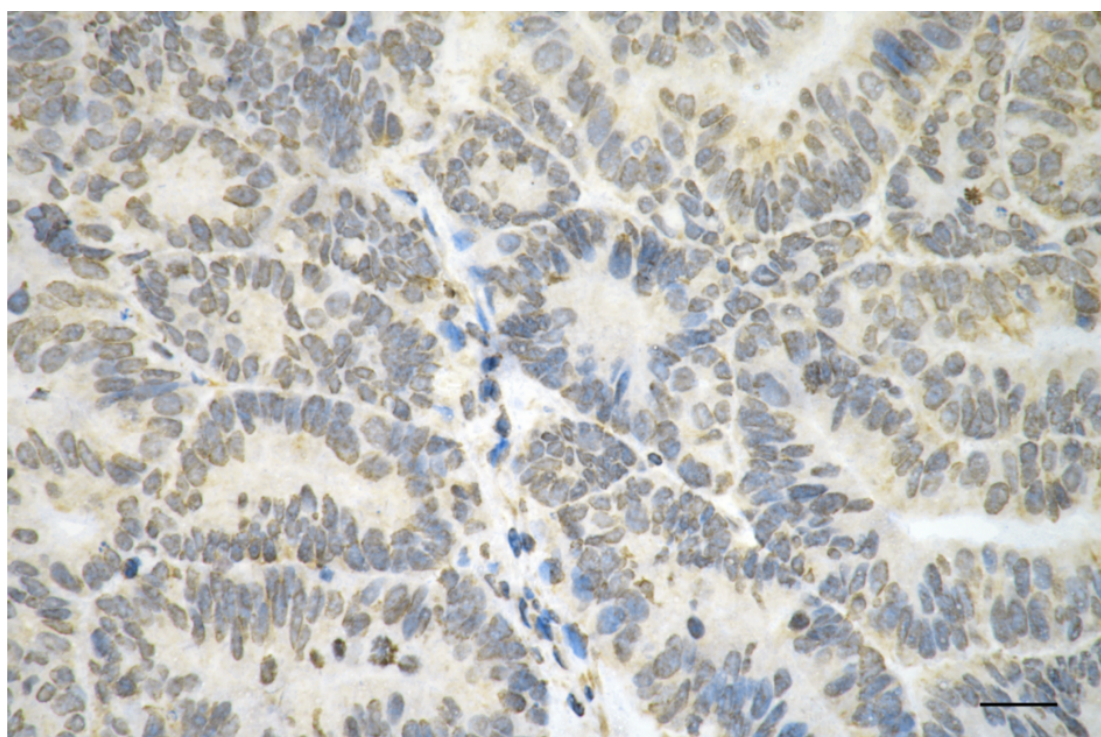


Western blotting analysis using anti-vimentin antibody (Cat#61538). Total cell lysates (30 µg) from various cell lines were loaded and separated by SDS-PAGE. The blot was incubated with anti-vimentin antibody (Cat#61538, 1:5,000) and HRP-conjugated goat anti-mouse secondary antibody (Cat#101, 1:20,000) respectively. Image was developed using FeQ™ ECL Substrate Kit (Cat#226).



Copyright ©2025 Genuin Biotechnologies LLC

Western blotting analysis using anti-vimentin antibody (Cat#61538). Vimentin expression in wild type (WT) and vimentin (VIM) knockdown (KD) HeLa cells with 20 µg of total cell lysates. Hsp90 α serves as a loading control. The blot was incubated with anti-vimentin antibody (Cat#61538, 1:5,000) and HRP-conjugated goat anti-mouse secondary antibody (Cat#101, 1:20,000) respectively. Image was developed using NaQ™ ECL Substrate Kit (Cat#716).



Copyright ©2025 Genuin Biotechnologies LLC

KD-Validated Anti-Vimentin Mouse Monoclonal Antibody

PAGE 5

Immunohistochemistry was performed on paraffin-embedded human endometrial carcinoma using anti-vimentin antibody (Cat#61538, 1:100). Antigen retrieval was done in sodium citrate buffer (pH 6.0). DAB was used for detection, with hematoxylin counterstaining. Images were acquired using a Nikon Ci-L Plus microscope (40× objective). Scale bar: 25 µm.

SUPPORT

SUPPORT@GENUINBIOTECH.COM
TEL: +1-540-855-7041

ORDERS

SALES@GENUINBIOTECH.COM
FAX: +1-540-855-7041

WWW.GENUINBIOTECH.COM