

# KD-Validated Anti-EWS RNA binding protein 1 Recombinant Rabbit Monoclonal Antibody



**Catalog #: 61545**

## Aliases

EWSR1; EWS RNA Binding Protein 1; EWS; Ewing Sarcoma Breakpoint Region 1; RNA-Binding Protein EWS; Ewings Sarcoma EWS-Flt1 (Type 1) Oncogene; Ewing Sarcoma Breakpoint Region 1 Protein; EWS Oncogene; BK984G1.4; EWS-FLI1

## Background

Gene Name: EWSR1

NCBI Gene Entry: [2130](#)

UniProt Entry: [Q01844](#)

## Application Information

Molecular Weight: Predicted, 68 kDa; observed, 85 kDa

Clonality: Rabbit monoclonal antibody

Clone ID: 25GB2765

Species Reactivity: Human, mouse, rat

Applications Tested: Western blotting (WB), flow cytometry (FCM), immunocytochemistry (IC)

## Immunogen

A synthesized peptide derived from human EWSR1

## Isotype

Rabbit IgG

## Storage Buffer

Supplied in PBS (pH 7.4) containing 50% glycerol, and 0.02% sodium azide.

## Storage

Store at -20 °C for one year.

## Recommended Dilutions

Western blotting (WB): 1:1,000-1:5,000

Flow Cytometry (FCM): 1:2,000

Immunocytochemistry (IC): 1:100-1:1,000

**Note:** This product is for research use only.

---

### SUPPORT

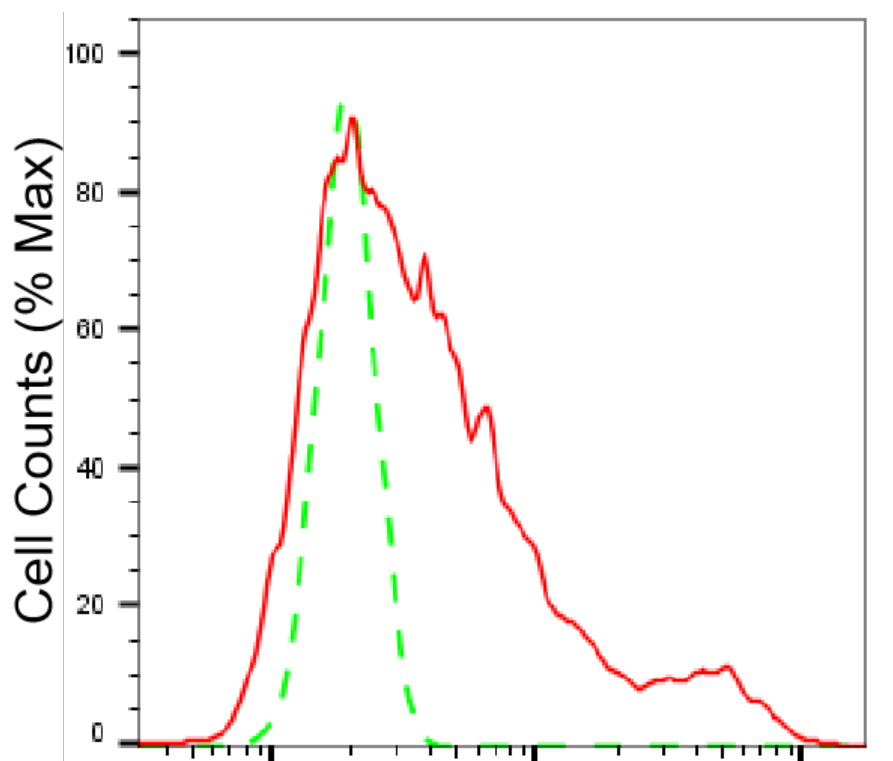
SUPPORT@GENUINBIOTECH.COM  
TEL: +1-540-855-7041

### ORDERS

SALES@GENUINBIOTECH.COM  
FAX: +1-540-855-7041

[WWW.GENUINBIOTECH.COM](http://WWW.GENUINBIOTECH.COM)

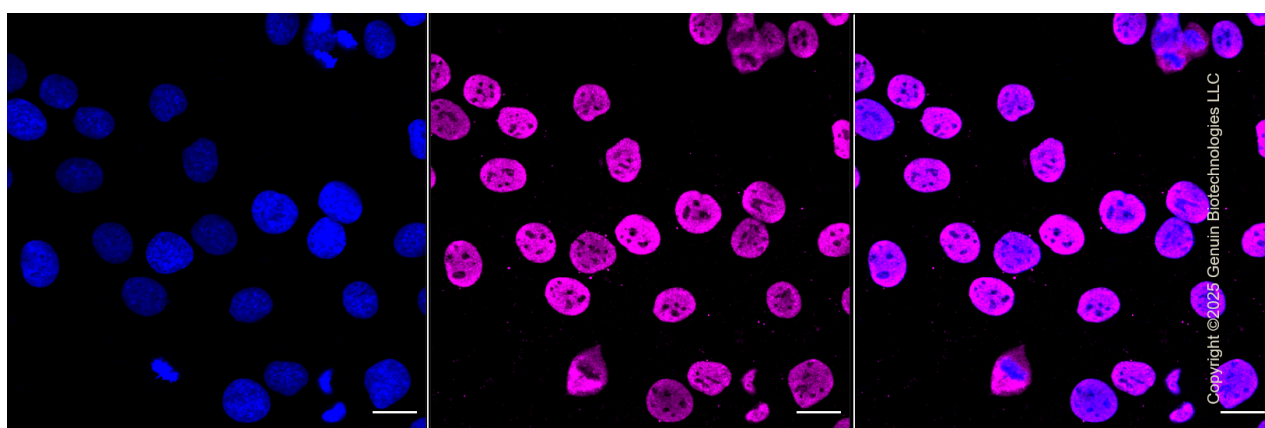
**Validation Data**



Copyright ©2025 Genuin Biotechnologies LLC

**EWS RNA binding protein 1-Alexa Fluor® 647**

Flow cytometric analysis of EWS RNA binding protein 1 expression in HT-1080 cells using EWS RNA binding protein 1 antibody (Cat#61545, 1:2,000). Green, isotype control; red, EWS RNA binding protein 1.



Copyright ©2025 Genuin Biotechnologies LLC

**SUPPORT**

SUPPORT@GENUINBIOTECH.COM  
TEL: +1-540-855-7041

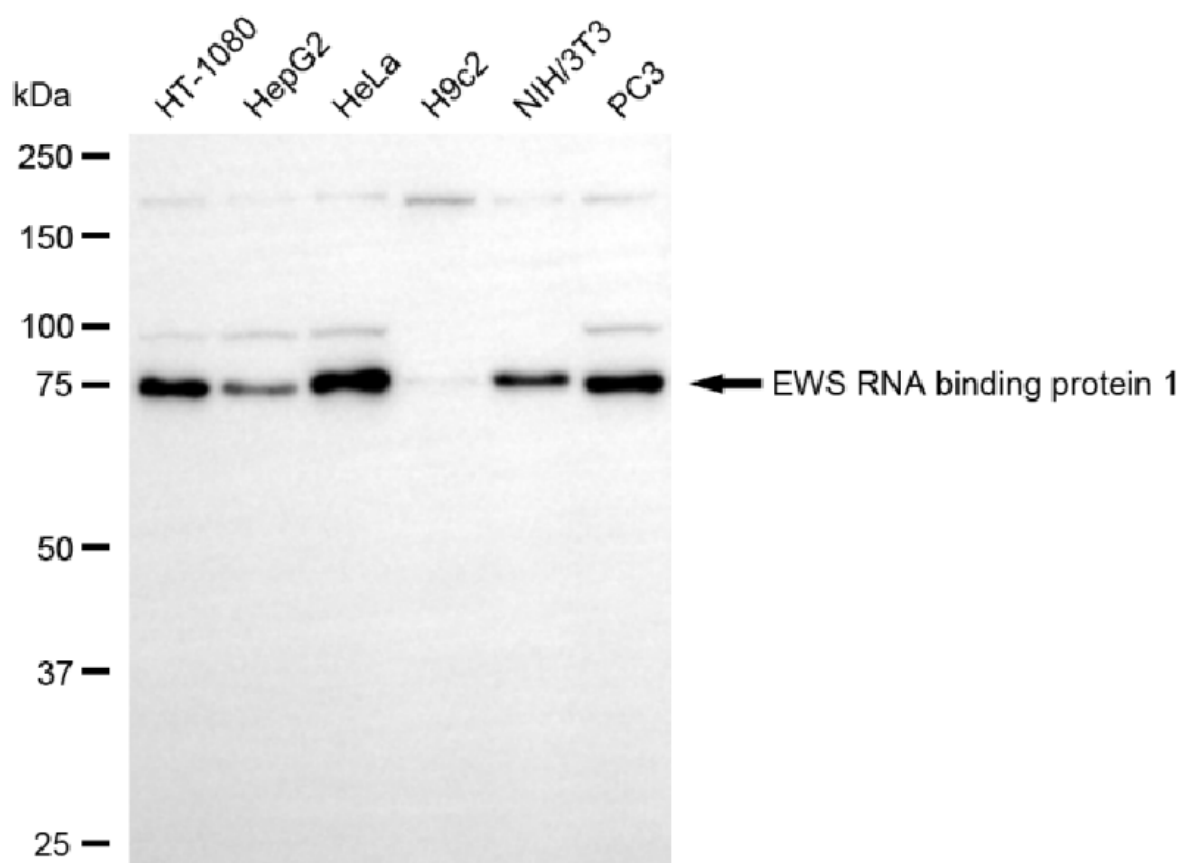
**ORDERS**

SALES@GENUINBIOTECH.COM  
FAX: +1-540-855-7041

**WWW.GENUINBIOTECH.COM**

## KD-Validated Anti-EWS RNA binding protein 1 Recombinant Rabbit Monoclonal Antibody

PAGE 3



Copyright ©2025 Genuin Biotechnologies LLC

Western blotting analysis using anti-EWS RNA binding protein 1 antibody (Cat#61545). Total cell lysates (30  $\mu$ g) from various cell lines were loaded and separated by SDS-PAGE. The blot was incubated with anti-EWS RNA binding protein 1 antibody (Cat#61545, 1:5,000) and HRP-conjugated goat anti-rabbit secondary antibody (Cat#201, 1:20,000) respectively. Image was developed using NaQ™ ECL Substrate Kit (Cat#716).

### SUPPORT

SUPPORT@GENUINBIOTECH.COM  
TEL: +1-540-855-7041

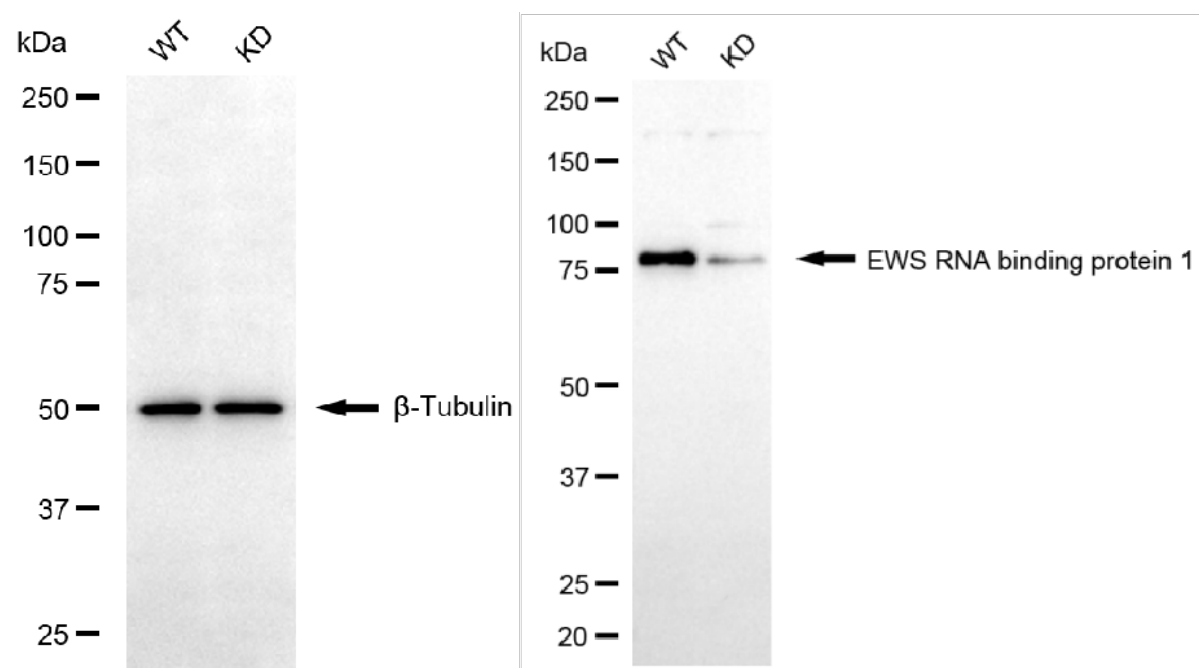
### ORDERS

SALES@GENUINBIOTECH.COM  
FAX: +1-540-855-7041

[WWW.GENUINBIOTECH.COM](http://WWW.GENUINBIOTECH.COM)

## KD-Validated Anti-EWS RNA binding protein 1 Recombinant Rabbit Monoclonal Antibody

PAGE 4



Copyright ©2025 Genuin Biotechnologies LLC

Western blotting analysis using anti-EWS RNA binding protein 1 antibody (Cat#61545). EWS RNA binding protein 1 expression in wild-type (WT) and EWS RNA binding protein 1 (EWSR1) knockdown (KD) 293T cells with 20 µg of total cell lysates. β-Tubulin serves as a loading control. The blot was incubated with anti-EWS RNA binding protein 1 antibody (Cat#61545, 1:5,000) and HRP-conjugated goat anti-rabbit secondary antibody (Cat#201, 1:20,000) respectively. Image was developed using NaQ™ ECL Substrate Kit (Cat#716).

### SUPPORT

SUPPORT@GENUINBIOTECH.COM  
TEL: +1-540-855-7041

### ORDERS

SALES@GENUINBIOTECH.COM  
FAX: +1-540-855-7041

WWW.GENUINBIOTECH.COM