

KD-Validated Anti-BAG Cochaperone 6 Recombinant Rabbit Monoclonal Antibody



Catalog #: 61548

Aliases

BAG6; BAG Cochaperone 6; G3; D6S52E; Scythe; BAT3; BAG Family Molecular Chaperone Regulator 6; Large Proline-Rich Protein BAG6; HLA-B-Associated Transcript 3; BCL2 Associated Athanogene 6; Protein Scyth; Protein G3; BAG-6; Large Proline-Rich Protein BAT3; HLA-B Associated Transcript 3; BCL2-Associated Athanogene 6

Background

Gene Name: BAG6

NCBI Gene Entry: [7917](#)

UniProt Entry: [P46379](#)

Application Information

Molecular Weight: Predicted, 119 kDa, observed, 160 kDa

Clonality: Rabbit monoclonal antibody

Clone ID: 25GB2780

Species Reactivity: Human, mouse, rat

Applications Tested: Western blotting (WB), flow cytometry (FCM), immunocytochemistry (IC)

Immunogen

A synthesized peptide derived from human BAT3

Isotype

Rabbit IgG

Storage Buffer

Supplied in PBS (pH 7.4) containing 50% glycerol, and 0.02% sodium azide.

Storage

Store at -20 °C for one year.

Recommended Dilutions

Western blotting (WB): 1:1,000-1:5,000

Flow Cytometry (FCM): 1:2,000

Immunocytochemistry (IC): 1:100-1:1,000

SUPPORT

SUPPORT@GENUINBIOTECH.COM
TEL: +1-540-855-7041

ORDERS

SALES@GENUINBIOTECH.COM
FAX: +1-540-855-7041

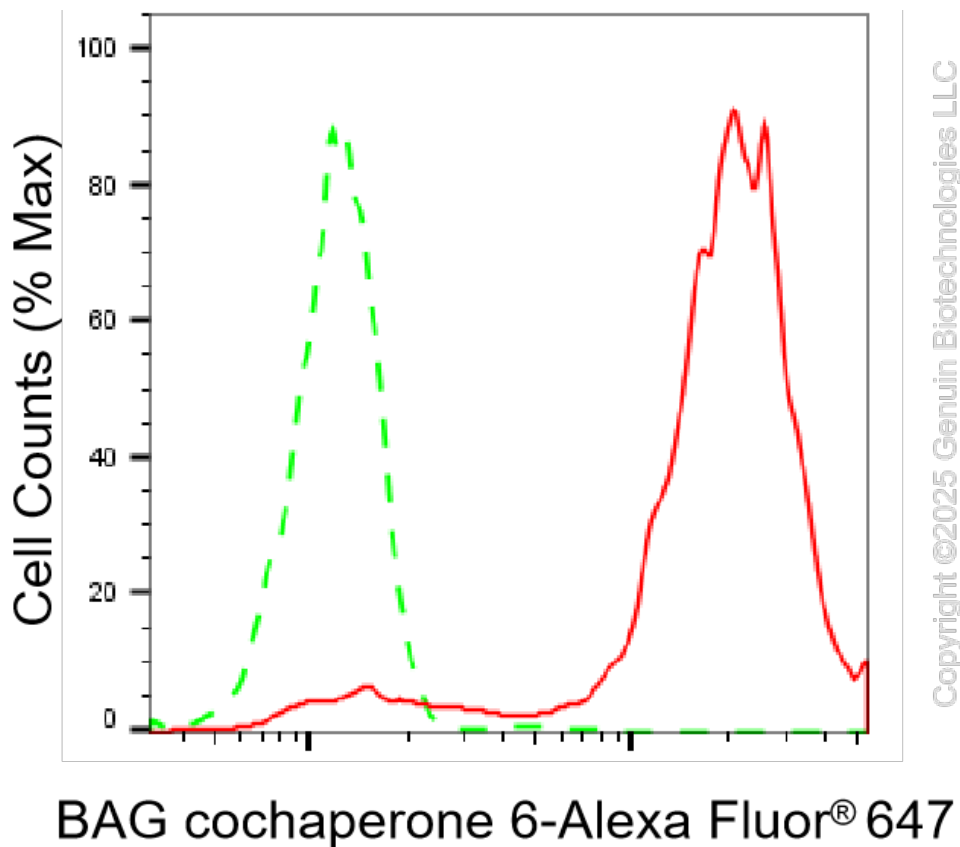
WWW.GENUINBIOTECH.COM

KD-Validated Anti-BAG Cochaperone 6 Recombinant Rabbit Monoclonal Antibody

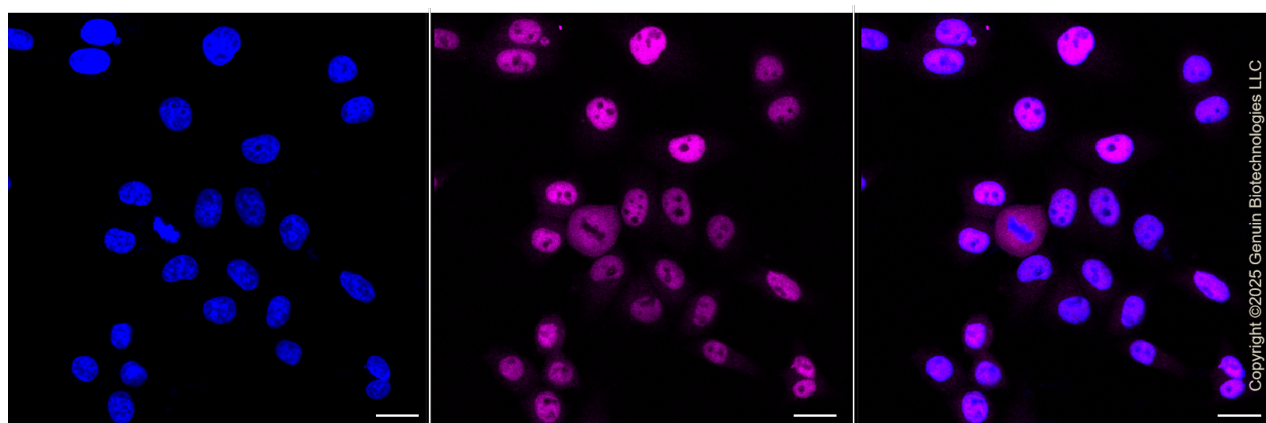
PAGE 2

Note: This product is for research use only.

Validation Data



Flow cytometric analysis of BAG cochaperone 6 expression in HepG2 cells using anti-BAG cochaperone 6 antibody (Cat#61548, 1:2,000). Green, isotype control; red, BAG cochaperone 6.



Immunocytochemical staining of HepG2 cells with BAG cochaperone 6 antibody (Cat#61548, 1:1,000). Nuclei were stained blue with DAPI; BAG cochaperone 6 was stained magenta with Alexa Fluor® 647. Images were taken using Leica stellaris 5. Protein abundance based on laser Intensity and smart gain: Medium. Scale bar, 20 μ m.

SUPPORT

SUPPORT@GENUINBIOTECH.COM
TEL: +1-540-855-7041

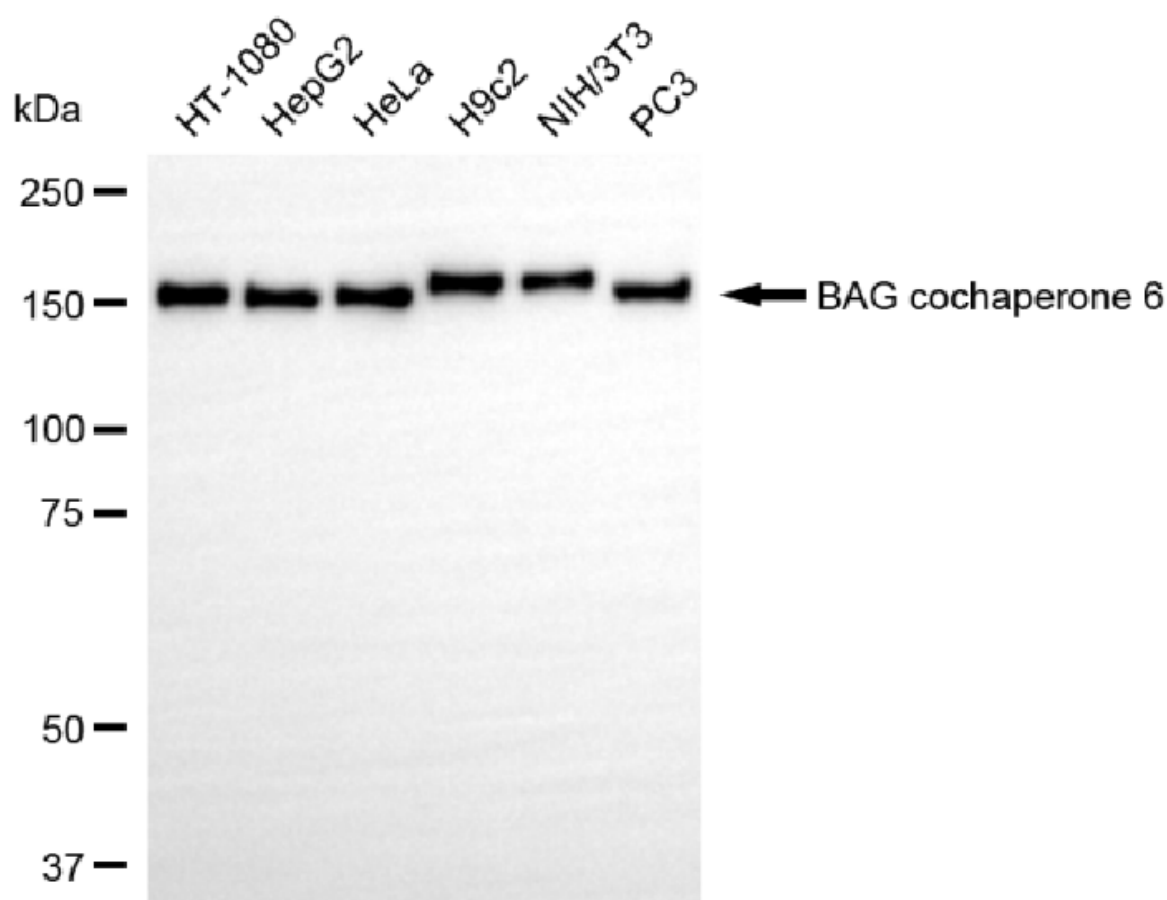
ORDERS

SALES@GENUINBIOTECH.COM
FAX: +1-540-855-7041

WWW.GENUINBIOTECH.COM

KD-Validated Anti-BAG Cochaperone 6 Recombinant Rabbit Monoclonal Antibody

PAGE 3



Copyright ©2025 Genuin Biotechnologies LLC

Western blotting analysis using anti-BAG cochaperone 6 antibody (Cat#61548). Total cell lysates (30 μ g) from various cell lines were loaded and separated by SDS-PAGE. The blot was incubated with anti-BAG cochaperone 6 antibody (Cat#61548, 1:5,000) and HRP-conjugated goat anti rabbit secondary antibody (Cat#201, 1:20,000) respectively. Image was developed using NaQ™ ECL Substrate Kit (Cat#716).

SUPPORT

SUPPORT@GENUINBIOTECH.COM
TEL: +1-540-855-7041

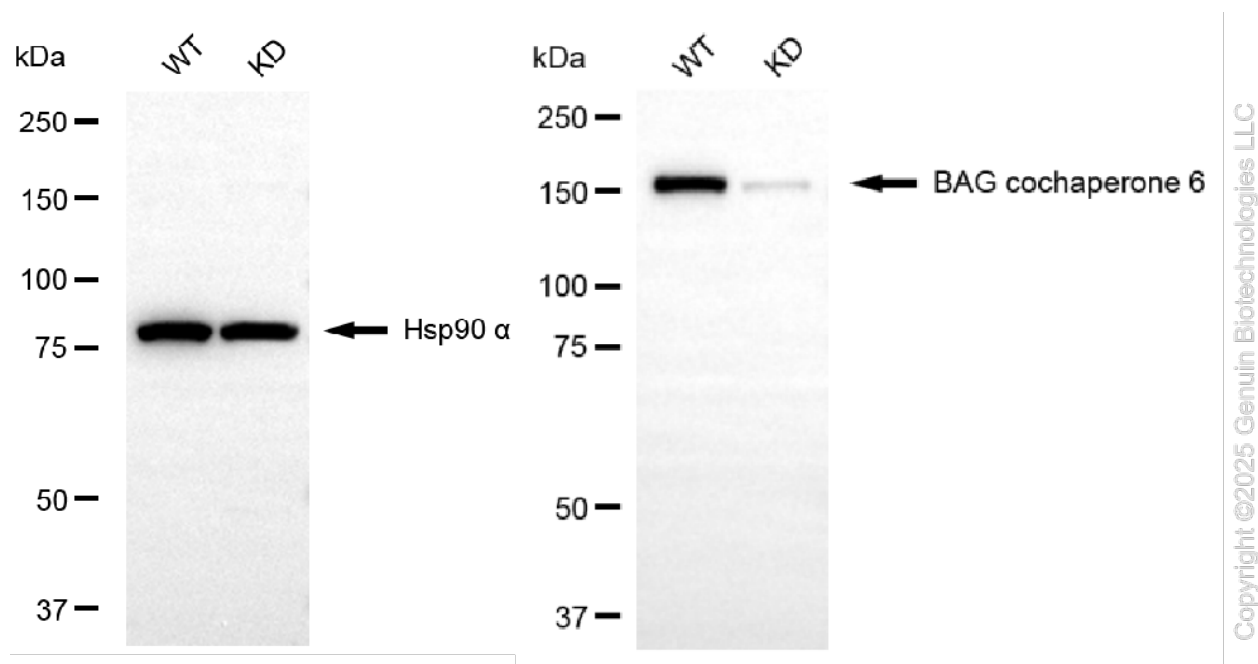
ORDERS

SALES@GENUINBIOTECH.COM
FAX: +1-540-855-7041

WWW.GENUINBIOTECH.COM

KD-Validated Anti-BAG Cochaperone 6 Recombinant Rabbit Monoclonal Antibody

PAGE 4



Western blotting analysis using anti-BAG cochaperone 6 antibody (Cat#61548). BAG cochaperone 6 expression in wild type (WT) and BAG cochaperone 6 (BAG6) knockdown (KD) HSHC cells with 20 μ g of total cell lysates. Hsp90 α serves as a loading control. The blot was incubated with anti-BAG cochaperone 6 antibody (Cat#61548, 1:5,000) and HRP-conjugated goat anti-rabbit secondary antibody (Cat#201, 1:20,000) respectively. Image was developed using NaQTM ECL Substrate Kit (Cat#716).

SUPPORT

SUPPORT@GENUINBIOTECH.COM
TEL: +1-540-855-7041

ORDERS

SALES@GENUINBIOTECH.COM
FAX: +1-540-855-7041

WWW.GENUINBIOTECH.COM