

# KD-Validated Anti-AIFM1 Recombinant Rabbit Monoclonal Antibody



**Catalog #: 61553**

## Aliases

AIFM1; Apoptosis Inducing Factor Mitochondria Associated 1; AIF; CMTX4; DFNX5; PDCD8; Apoptosis-Inducing Factor, Mitochondrion-Associated, 1; Programmed Cell Death 8 (Apoptosis-Inducing Factor); Apoptosis-Inducing Factor 1, Mitochondrial; Auditory Neuropathy, X-Linked Recessive 1; AUNX1; NAMS; Neuropathy, Axonal, Motor-Sensory With Deafness And Mental Retardation (Cowchock Syndrome); Apoptosis Inducing Factor, Mitochondria Associated 1; Striatal Apoptosis-Inducing Factor; Testicular Secretory Protein Li 4; Programmed Cell Death Protein 8; EC 1.6.99.-; COXPD6; SEMDHL; CMT2D; COWCK; NADMR

## Background

Gene Name: AIFM1

NCBI Gene Entry: [9131](#)

UniProt Entry: [O95831](#)

## Application Information

Molecular Weight: Predicted, 67 kDa, observed, 67 kDa

Clonality: Rabbit monoclonal antibody

Clone ID: 25GB2810

Species Reactivity: Human, mouse, rat

Applications Tested: Western blotting (WB), flow cytometry (FCM), immunocytochemistry (IC)

## Immunogen

A synthesized peptide derived from human AIF

## Isotype

Rabbit IgG

## Storage Buffer

Supplied in PBS (pH 7.4) containing 50% glycerol, and 0.02% sodium azide.

## Storage

Store at -20 °C for one year.

## Recommended Dilutions

Western blotting (WB): 1:1,000-1:5,000

Flow Cytometry (FCM): 1:2,000

---

### SUPPORT

SUPPORT@GENUINBIOTECH.COM  
TEL: +1-540-855-7041

### ORDERS

SALES@GENUINBIOTECH.COM  
FAX: +1-540-855-7041

[WWW.GENUINBIOTECH.COM](http://WWW.GENUINBIOTECH.COM)

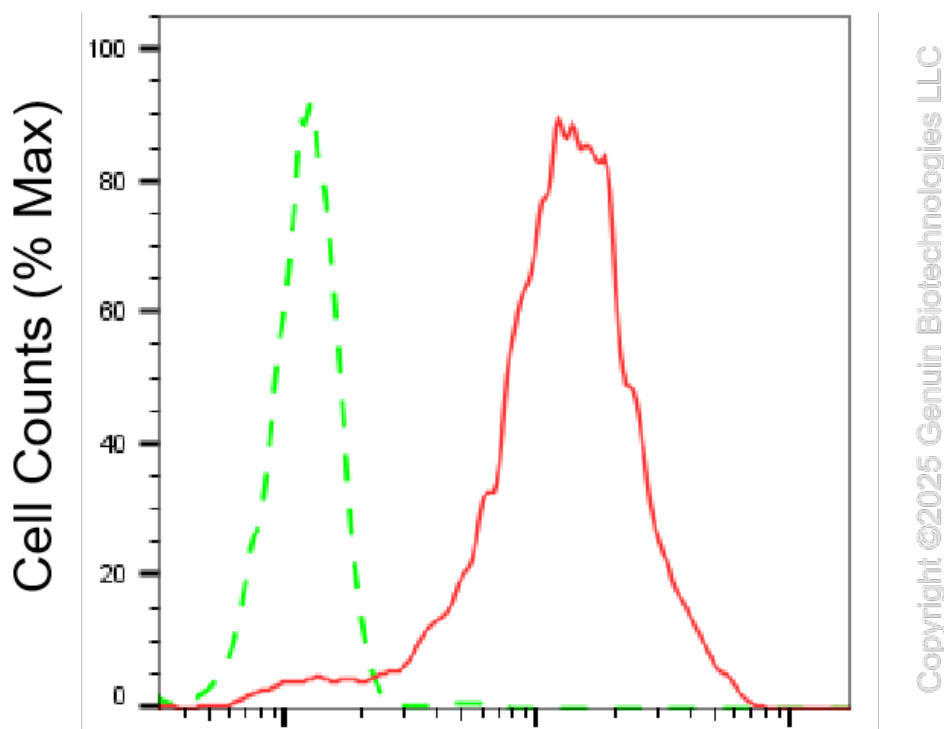
# KD-Validated Anti-AIFM1 Recombinant Rabbit Monoclonal Antibody

PAGE 2

Immunocytochemistry (IC): 1:100-1:1,000

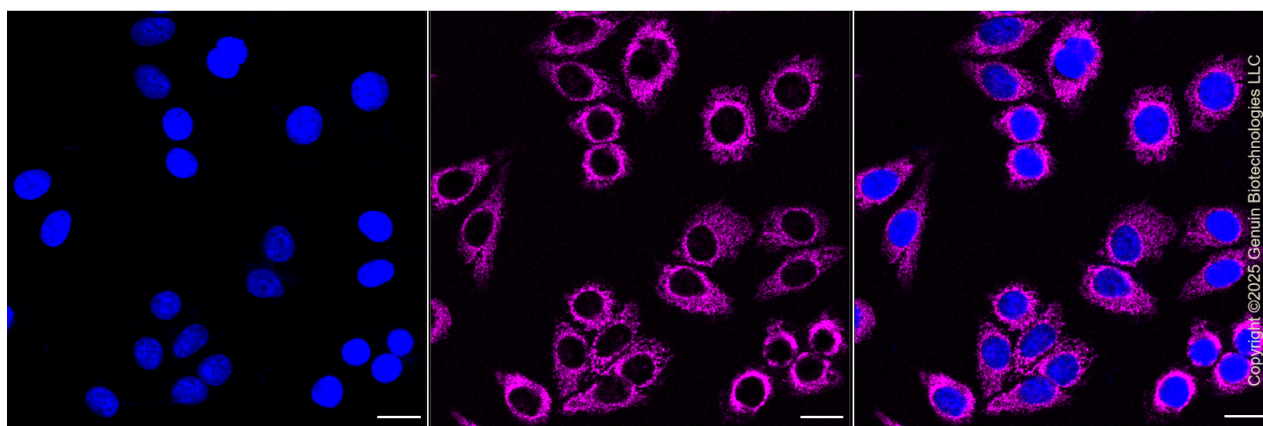
**Note:** This product is for research use only.

## Validation Data



### AIFM1-Alexa Fluor® 647

Flow cytometric analysis of AIFM1 expression in HepG2 cells using anti-AIFM1 antibody (Cat#61553, 1:2,000). Green, isotype control; red, AIFM1.



Immunocytochemical staining of HepG2 cells with anti-AIFM1 antibody (Cat#61553, 1:1,000). Nuclei were stained blue with DAPI; AIFM1 was stained magenta with Alexa Fluor® 647. Images

#### SUPPORT

SUPPORT@GENUINBIOTECH.COM  
TEL: +1-540-855-7041

#### ORDERS

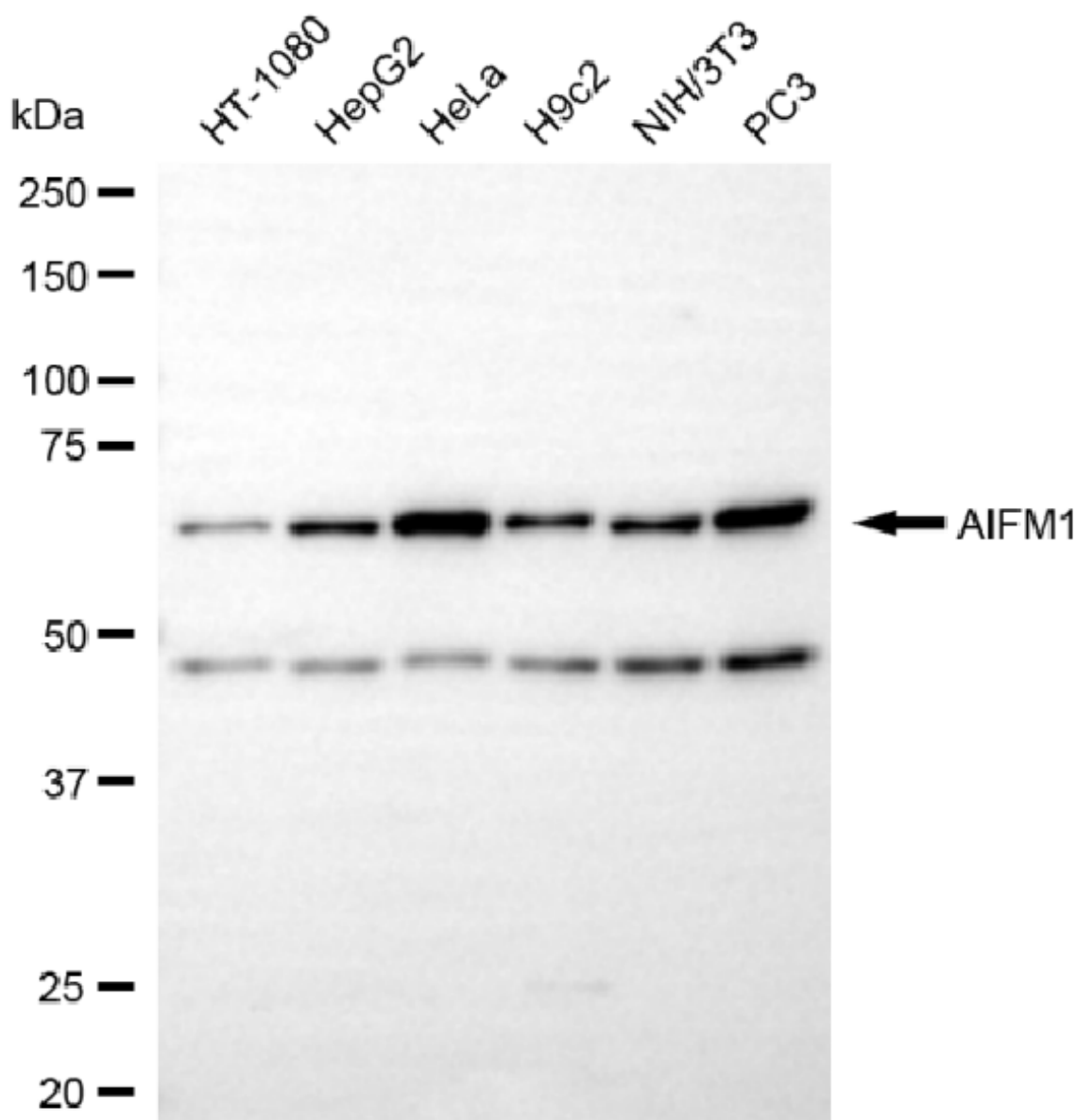
SALES@GENUINBIOTECH.COM  
FAX: +1-540-855-7041

WWW.GENUINBIOTECH.COM

## KD-Validated Anti-AIFM1 Recombinant Rabbit Monoclonal Antibody

PAGE 3

were taken using Leica stellaris 5. Protein abundance based on laser Intensity and smart gain: High. Scale bar, 20  $\mu$ m.



Copyright ©2025 Genuin Biotechnologies LLC

Western blotting analysis using anti-AIFM1 antibody (Cat#61553). Total cell lysates (30  $\mu$ g) from various cell lines were loaded and separated by SDS-PAGE. The blot was incubated with anti-AIFM1 antibody (Cat#61553, 1:5,000) and HRP-conjugated goat anti-rabbit secondary antibody (Cat#201, 1:20,000) respectively. Image was developed using NaQ™ ECL Substrate Kit (Cat#716).

### SUPPORT

SUPPORT@GENUINBIOTECH.COM  
TEL: +1-540-855-7041

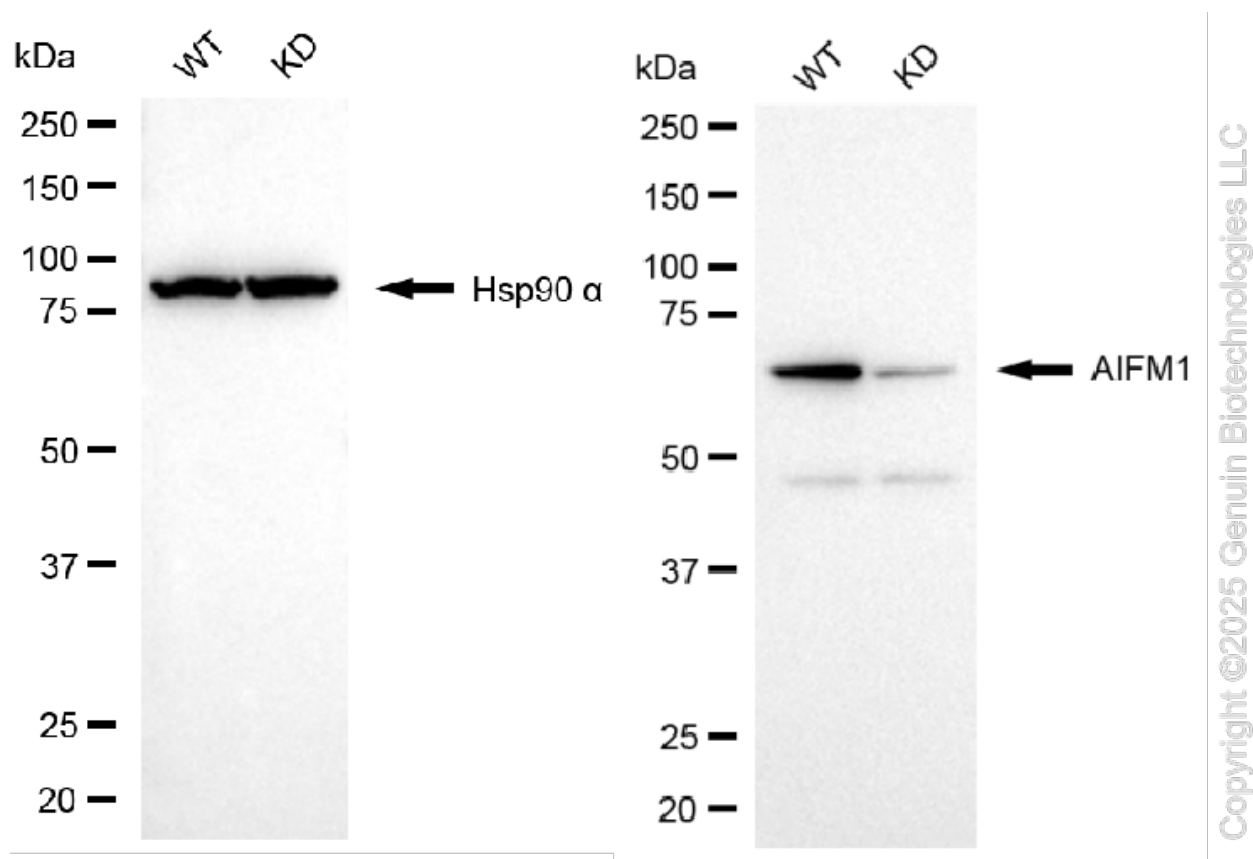
### ORDERS

SALES@GENUINBIOTECH.COM  
FAX: +1-540-855-7041

WWW.GENUINBIOTECH.COM

## KD-Validated Anti-AIFM1 Recombinant Rabbit Monoclonal Antibody

PAGE 4



Western blotting analysis using anti-AIFM1 antibody (Cat#61553). AIFM1 expression in wild-type (WT) and AIFM1 knockdown (KD) HeLa cells with 20 µg of total cell lysates. Hsp90 α serves as a loading control. The blot was incubated with anti-AIFM1 antibody (Cat#61553, 1:5,000) and HRP-conjugated goat anti-rabbit secondary antibody (Cat#201, 1:20,000) respectively. Image was developed using NaQ™ ECL Substrate Kit (Cat#716).

### SUPPORT

SUPPORT@GENUINBIOTECH.COM  
TEL: +1-540-855-7041

### ORDERS

SALES@GENUINBIOTECH.COM  
FAX: +1-540-855-7041

[WWW.GENUINBIOTECH.COM](http://WWW.GENUINBIOTECH.COM)