

# KD-Validated Anti-Enolase 1 Recombinant Rabbit Monoclonal Antibody



**Catalog #: 61555**

## Aliases

ENO1; Enolase 1; Alpha-Enolase; ENO1L1; MBP-1; MPB1; PPH; ENO1 Intronic Transcript 1 (Non-Protein Coding); 2-Phospho-D-Glycerate Hydro-Lyase; Plasminogen-Binding Protein; ENO1 Intronic Transcript 1; Phosphopyruvate Hydratase; Enolase 1, (Alpha); Non-Neural Enolase; EC 4.2.1.11; ENO1-IT1; NNE; Epididymis Secretory Protein Li 17; C-Myc Promoter-Binding Protein-1; MYC Promoter-Binding Protein 1; C-Myc Promoter-Binding Protein; Alpha Enolase Like 1; Tau-Crystallin; Enolase-Alpha; HEL-S-17; EC 4.2.1; MBPB1; MPB-1

## Background

Gene Name: ENO1

NCBI Gene Entry: [2023](#)

UniProt Entry: [P06733](#)

## Application Information

Molecular Weight: Predicted, 47 kDa, observed, 47 kDa

Clonality: Rabbit monoclonal antibody

Clone ID: 25GB2820

Species Reactivity: Human, mouse, rat

Applications Tested: Western blotting (WB), flow cytometry (FCM), immunocytochemistry (IC)

## Immunogen

A synthesized peptide derived from human ENO1

## Isotype

Rabbit IgG

## Storage Buffer

Supplied in PBS (pH 7.4) containing 50% glycerol, and 0.02% sodium azide.

## Storage

Store at -20 °C for one year.

## Recommended Dilutions

Western blotting (WB): 1:1,000-1:5,000

Flow Cytometry (FCM): 1:2,000

Immunocytochemistry (IC): 1:100-1:1,000

---

### SUPPORT

SUPPORT@GENUINBIOTECH.COM  
TEL: +1-540-855-7041

### ORDERS

SALES@GENUINBIOTECH.COM  
FAX: +1-540-855-7041

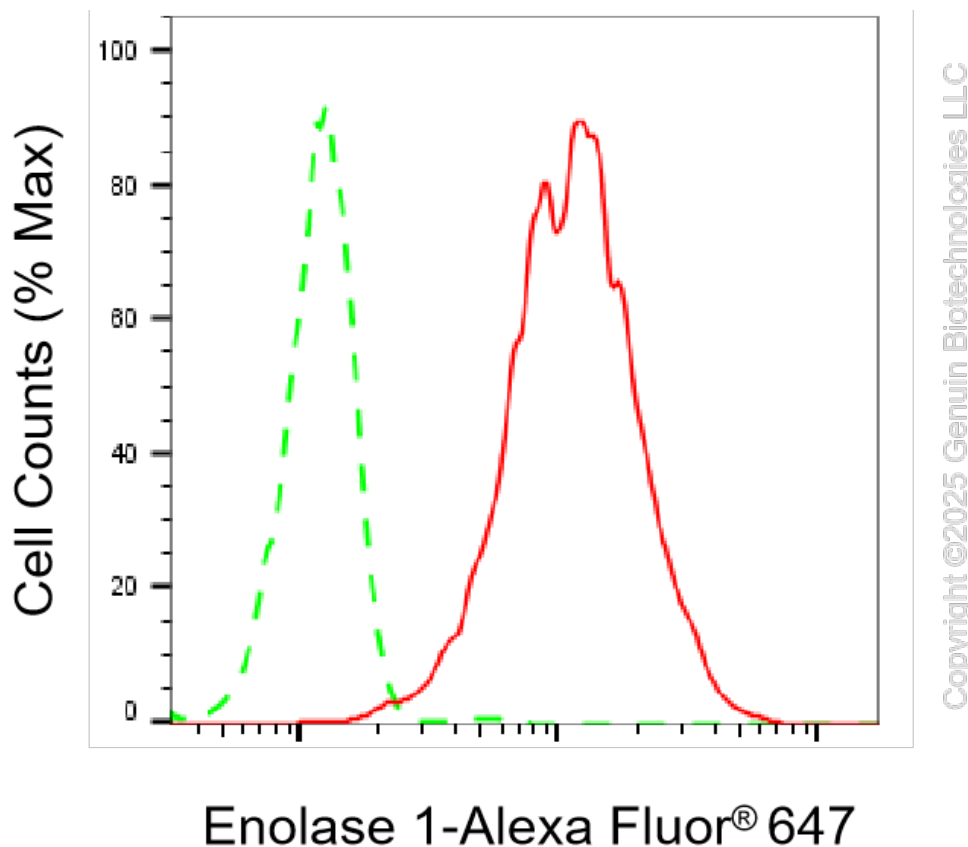
[WWW.GENUINBIOTECH.COM](http://WWW.GENUINBIOTECH.COM)

## KD-Validated Anti-Enolase 1 Recombinant Rabbit Monoclonal Antibody

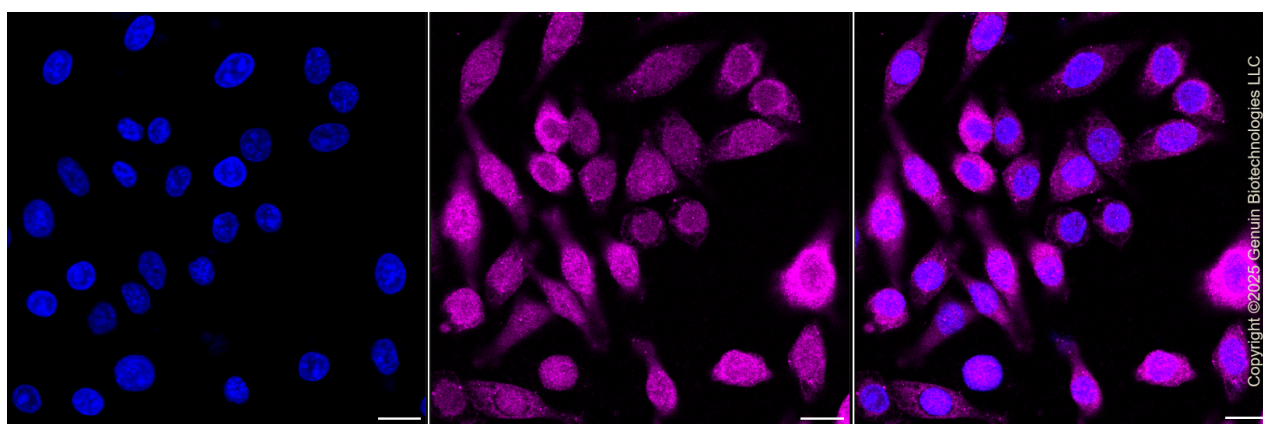
PAGE 2

**Note:** This product is for research use only.

### Validation Data



Flow cytometric analysis of Enolase 1 expression in HepG2 cells using anti-Enolase 1 antibody (Cat#61555, 1:2,000). Green, isotype control; red, Enolase 1.



Immunocytochemical staining of HepG2 cells with anti-Enolase 1 antibody (Cat#61555, 1:1,000). Nuclei were stained blue with DAPI; Enolase 1 was stained magenta with Alexa Fluor® 647. Images were taken using Leica stellaris 5. Protein abundance based on laser Intensity and smart

#### SUPPORT

SUPPORT@GENUINBIOTECH.COM  
TEL: +1-540-855-7041

#### ORDERS

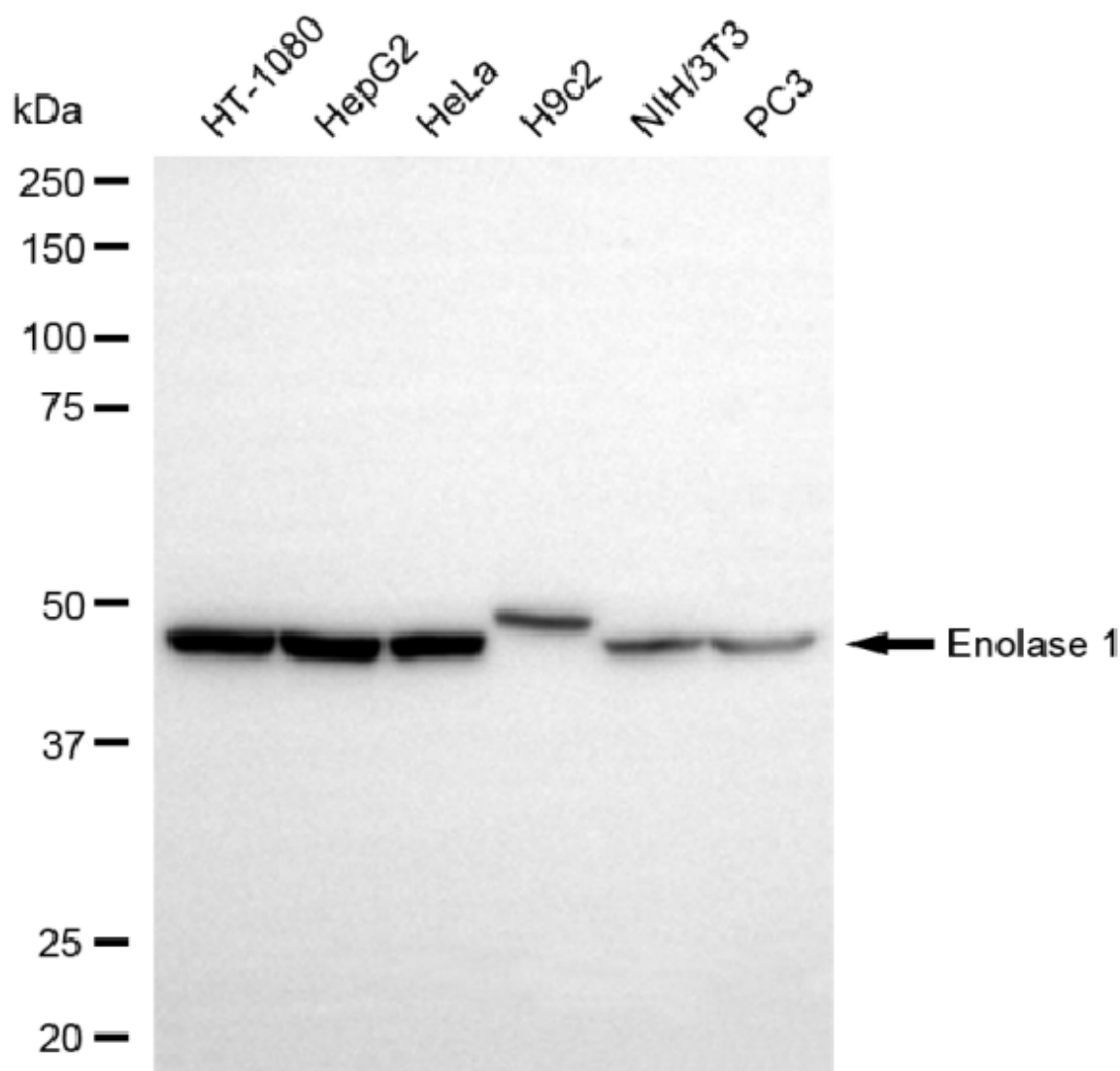
SALES@GENUINBIOTECH.COM  
FAX: +1-540-855-7041

[WWW.GENUINBIOTECH.COM](http://WWW.GENUINBIOTECH.COM)

## KD-Validated Anti-Enolase 1 Recombinant Rabbit Monoclonal Antibody

PAGE 3

gain: Medium. Scale bar, 20  $\mu$ m.



Copyright ©2025 Genuin Biotechnologies LLC

Western blotting analysis using anti-enolase 1 antibody (Cat#61555). Total cell lysates (30  $\mu$ g) from various cell lines were loaded and separated by SDS-PAGE. The blot was incubated with anti-enolase 1 antibody (Cat#61555, 1:5,000) and HRP-conjugated goat anti-rabbit secondary antibody (Cat#201, 1:20,000) respectively. Image was developed using NaQ™ ECL Substrate Kit (Cat#716).

### SUPPORT

SUPPORT@GENUINBIOTECH.COM  
TEL: +1-540-855-7041

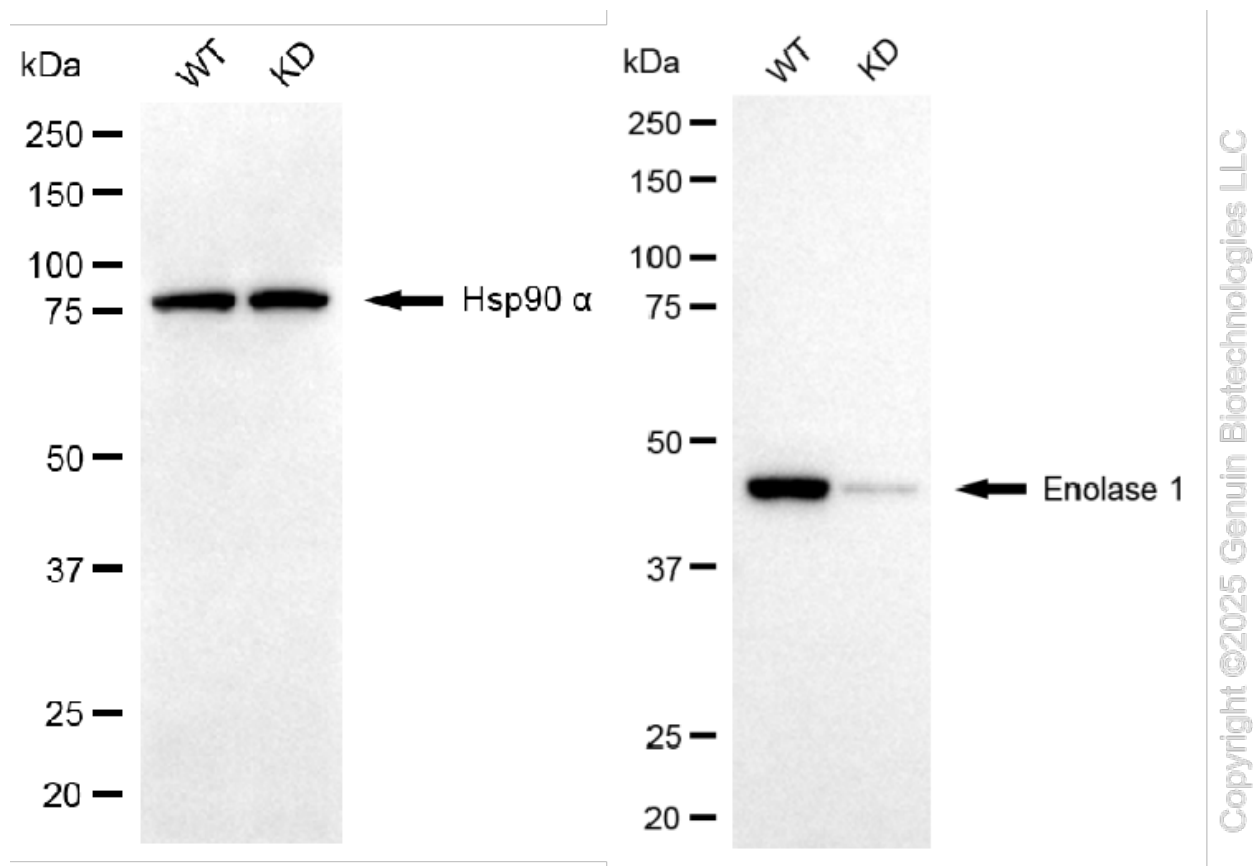
### ORDERS

SALES@GENUINBIOTECH.COM  
FAX: +1-540-855-7041

[WWW.GENUINBIOTECH.COM](http://WWW.GENUINBIOTECH.COM)

## KD-Validated Anti-Enolase 1 Recombinant Rabbit Monoclonal Antibody

PAGE 4



Western blotting analysis using anti-enolase 1 antibody (Cat#61555). Enolase 1 expression in wild-type (WT) and enolase 1 (ENO1) knockdown (KD) 293T cells with 20 µg of total cell lysates. Hsp90 α serves as a loading control. The blot was incubated with anti-enolase 1 antibody (Cat#61555, 1:5,000) and HRP-conjugated goat anti-rabbit secondary antibody (Cat#201, 1:20,000) respectively. Image was developed using NaQ™ ECL Substrate Kit (Cat#716).

### SUPPORT

SUPPORT@GENUINBIOTECH.COM  
TEL: +1-540-855-7041

### ORDERS

SALES@GENUINBIOTECH.COM  
FAX: +1-540-855-7041

[WWW.GENUINBIOTECH.COM](http://WWW.GENUINBIOTECH.COM)