

KD-Validated Anti-Calponin 1 Recombinant Rabbit Monoclonal Antibody



Catalog #: 61556

Aliases

CNN1; Calponin 1; Sm-Cal; SMCC; Calponin 1, Basic, Smooth Muscle; Calponin H1, Smooth Muscle; Basic Calponin; Calponin-1; Epididymis Secretory Protein Li 14; Calponins, Basi; HEL-S-14

Background

Gene Name: CNN1

NCBI Gene Entry: [1264](#)

UniProt Entry: [P51911](#)

Application Information

Molecular Weight: Predicted, 33 kDa; observed, 34 kDa

Clonality: Rabbit monoclonal antibody

Clone ID: 25GB2825

Species Reactivity: Human, mouse, rat

Applications Tested: Western blotting (WB), flow cytometry (FCM), immunocytochemistry (IC)

Immunogen

A synthesized peptide derived from human Calponin

Isotype

Rabbit IgG

Storage Buffer

Supplied in PBS (pH 7.4) containing 50% glycerol, and 0.02% sodium azide.

Storage

Store at -20 °C for one year.

Recommended Dilutions

Western blotting (WB): 1:1,000-1:5,000

Flow Cytometry (FCM): 1:2,000

Immunocytochemistry (IC): 1:100-1:1,000

Note: This product is for research use only.

SUPPORT

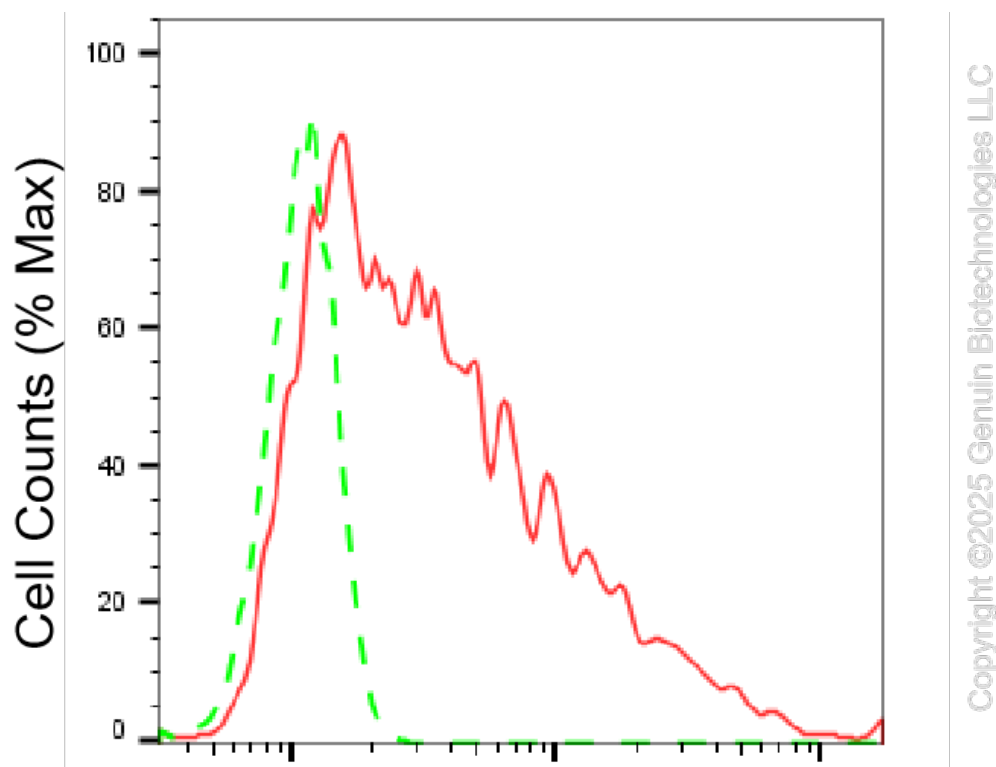
SUPPORT@GENUINBIOTECH.COM
TEL: +1-540-855-7041

ORDERS

SALES@GENUINBIOTECH.COM
FAX: +1-540-855-7041

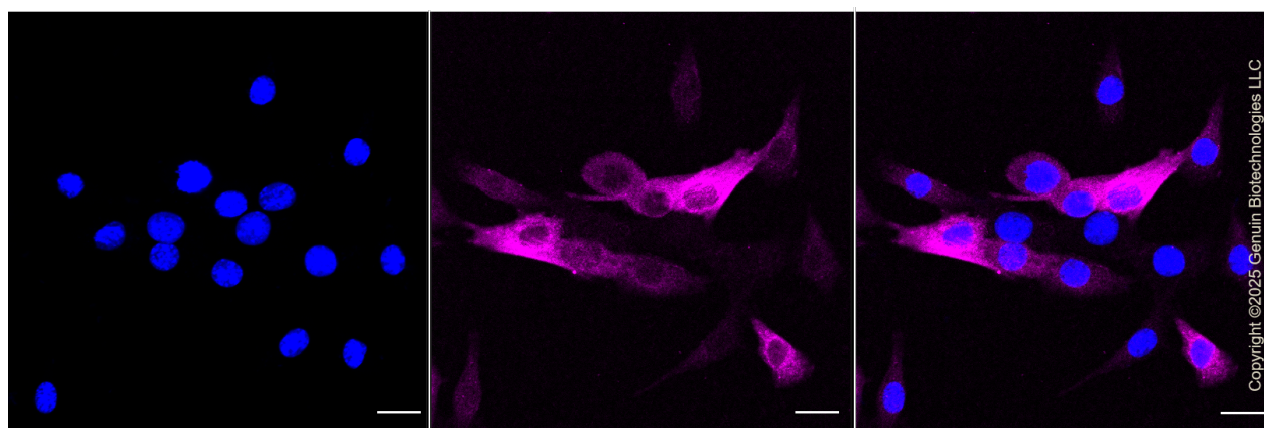
WWW.GENUINBIOTECH.COM

Validation Data



Calponin 1-Alexa Fluor® 647

Flow cytometric analysis of Calponin 1 expression in C2C12 cells using anti-Calponin 1 antibody (Cat#61556, 1:2,000). Green, isotype control; red, Calponin 1.



Immunocytochemical staining of C2C12 cells with anti-Calponin 1 antibody (Cat#61556, 1:1,000). Nuclei were stained blue with DAPI; Calponin 1 was stained magenta with Alexa Fluor® 647. Images were taken using Leica stellaris 5. Protein abundance based on laser Intensity and smart gain: Medium. Scale bar, 20 µm.

SUPPORT

SUPPORT@GENUINBIOTECH.COM
TEL: +1-540-855-7041

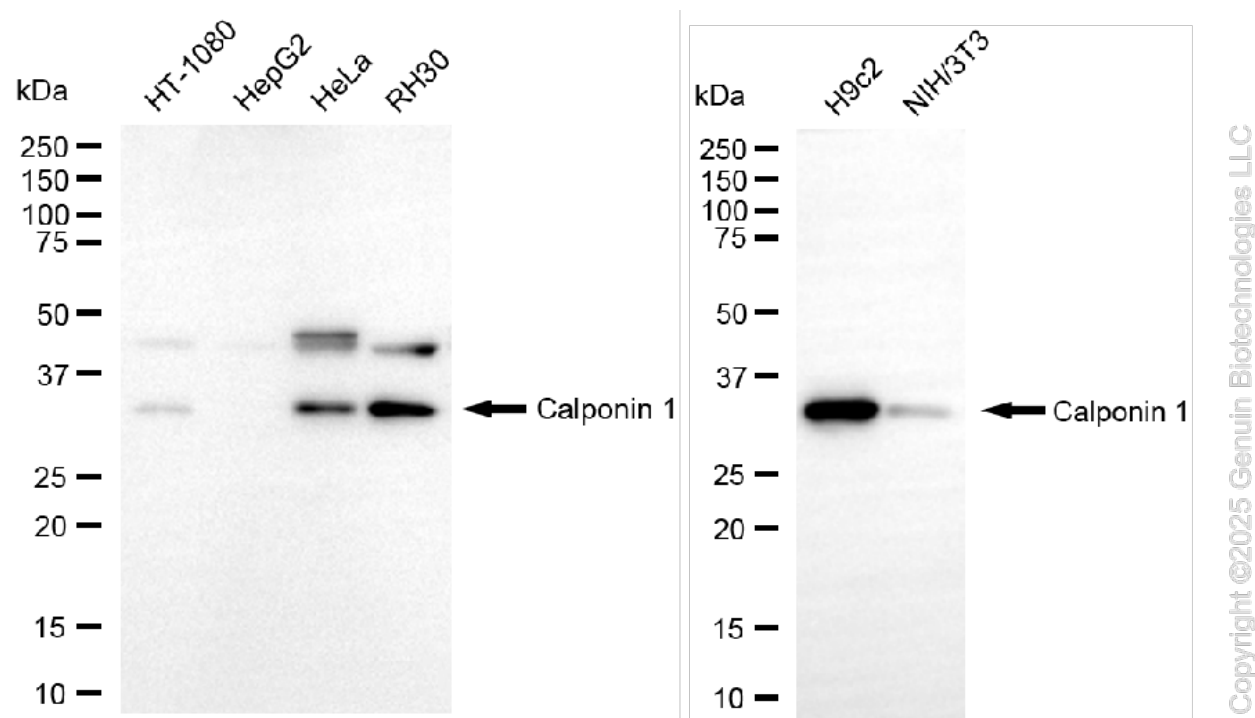
ORDERS

SALES@GENUINBIOTECH.COM
FAX: +1-540-855-7041

WWW.GENUINBIOTECH.COM

KD-Validated Anti-Calponin 1 Recombinant Rabbit Monoclonal Antibody

PAGE 3



Western blotting analysis using anti-calponin 1 antibody (Cat#61556). Total cell lysates (30 μ g) from various cell lines were loaded and separated by SDS-PAGE. The blot was incubated with anti-calponin 1 antibody (Cat#61556, 1:5,000) and HRP-conjugated goat anti-rabbit secondary antibody (Cat#201, 1:20,000) respectively. Image was developed using FeQ™ ECL Substrate Kit (Cat#226).

SUPPORT

SUPPORT@GENUINBIOTECH.COM
TEL: +1-540-855-7041

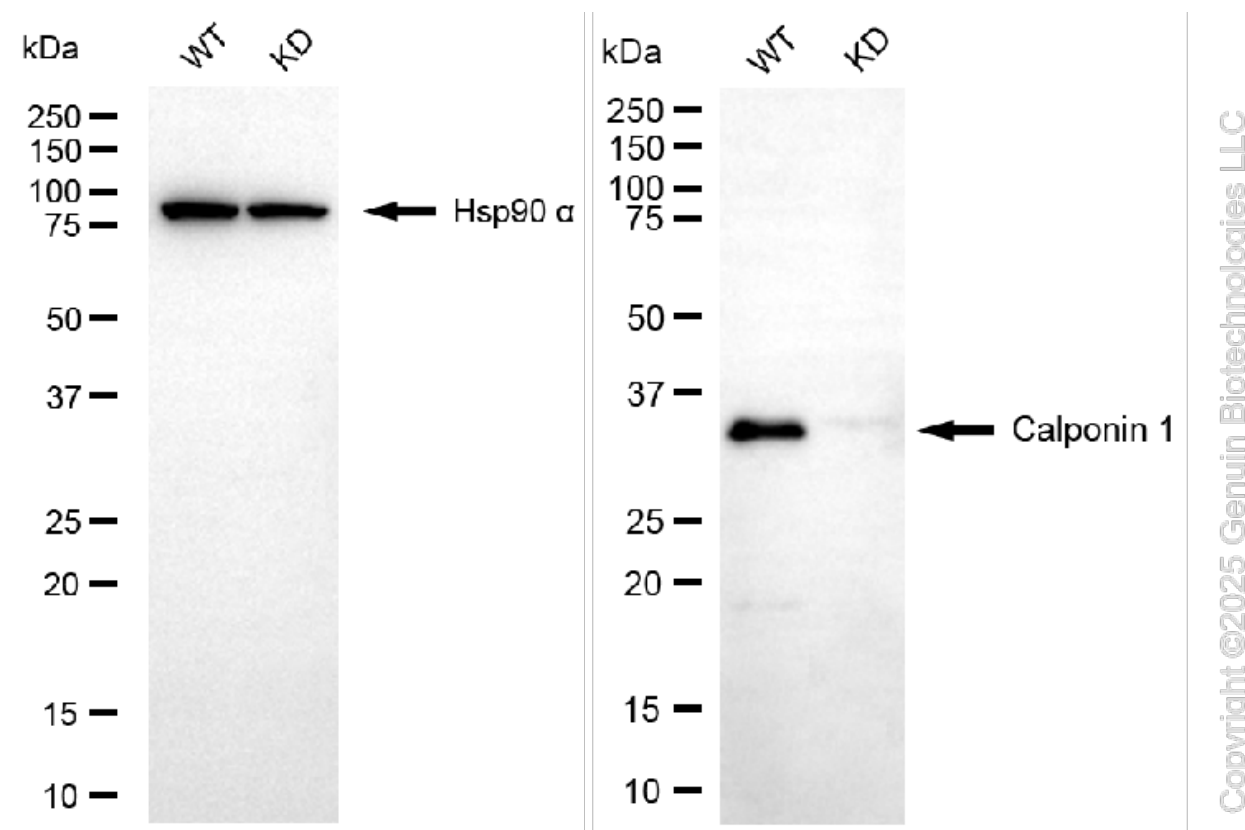
ORDERS

SALES@GENUINBIOTECH.COM
FAX: +1-540-855-7041

WWW.GENUINBIOTECH.COM

KD-Validated Anti-Calponin 1 Recombinant Rabbit Monoclonal Antibody

PAGE 4



Western blotting analysis using anti-calponin 1 antibody (Cat#61556). Calponin 1 expression in wild-type (WT) and CNN1 knockdown (KD) HeLa cells with 20 µg of total cell lysates. Hsp90 α serves as a loading control. The blot was incubated with anti-calponin 1 antibody (Cat#61556, 1:5,000) and HRP-conjugated goat anti-rabbit secondary antibody (Cat#201, 1:20,000) respectively. Image was developed using FeQ™ ECL Substrate Kit (Cat#226).

SUPPORT

SUPPORT@GENUINBIOTECH.COM
TEL: +1-540-855-7041

ORDERS

SALES@GENUINBIOTECH.COM
FAX: +1-540-855-7041

WWW.GENUINBIOTECH.COM