

KD-Validated Anti-Lamin A/C Recombinant Rabbit Monoclonal Antibody



Catalog #: 61558

Aliases

LMNA; Lamin A/C; HGPS; MADA; LMN1; Mandibuloacral Dysplasia Type A; Lamin A/C-Like 1; Prelamin-A/C; Progerin; LGMD1B; CMD1A; LMNL1; PRO1; Limb Girdle Muscular Dystrophy 1B (Autosomal Dominant) 2
Cardiomyopathy, Dilated 1A (Autosomal Dominant); Epididymis Secretory Sperm Binding Protein; Progeria 1 (Hutchinson-Gilford Type); Renal Carcinoma Antigen NY-REN-32; 70 KDa Lamin; Lamin C; CMT2B1; CDCD1; FPLD2; Lamin; CDDC; EMD2; FPLD; LDP1; LMNC; FPL; IDC; LFP

Background

Gene Name: LMNA
NCBI Gene Entry: [4000](#)
UniProt Entry: [P02545](#)

Application Information

Molecular Weight: Predicted, 74 kDa; observed, 63,74 kDa
Clonality: Rabbit monoclonal antibody
Clone ID: 25GB2835
Species Reactivity: Human
Applications Tested: Western blotting (WB), flow cytometry (FCM), immunocytochemistry (IC)

Immunogen

A synthesized peptide derived from human Lamin A/C

Isotype

Rabbit IgG

Storage Buffer

Supplied in PBS (pH 7.4) containing 50% glycerol, and 0.02% sodium azide.

Storage

Store at -20 °C for one year.

Recommended Dilutions

Western blotting (WB): 1:2,000-1:10,000
Flow Cytometry (FCM): 1:2,000

SUPPORT

SUPPORT@GENUINBIOTECH.COM
TEL: +1-540-855-7041

ORDERS

SALES@GENUINBIOTECH.COM
FAX: +1-540-855-7041

WWW.GENUINBIOTECH.COM

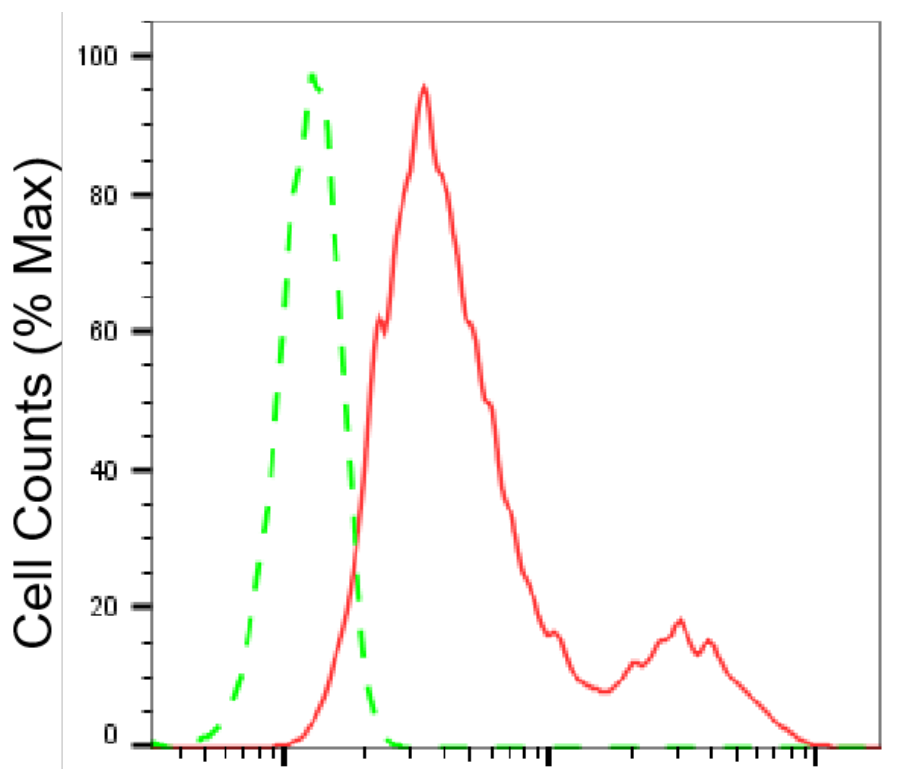
KD-Validated Anti-Lamin A/C Recombinant Rabbit Monoclonal Antibody

PAGE 2

Immunocytochemistry (IC): 1:100-1:1,000

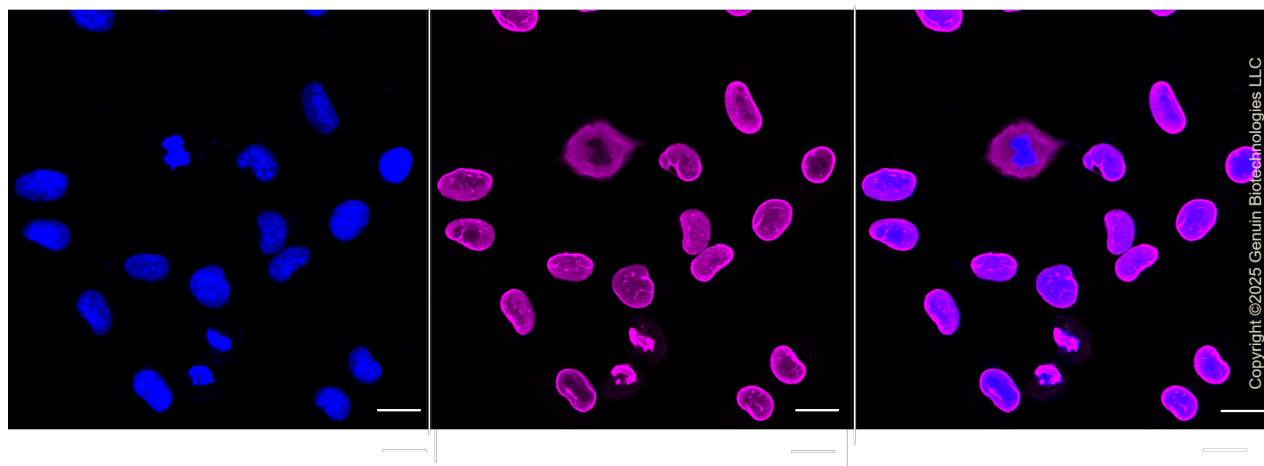
Note: This product is for research use only.

Validation Data



Copyright ©2025 Genuin Biotechnologies LLC

Flow cytometric analysis of Lamin A/C expression in HT-1080 cells using anti-Lamin A/C antibody (Cat#61558, 1:2,000). Green, isotype control; red, Lamin A/C.



SUPPORT

SUPPORT@GENUINBIOTECH.COM
TEL: +1-540-855-7041

ORDERS

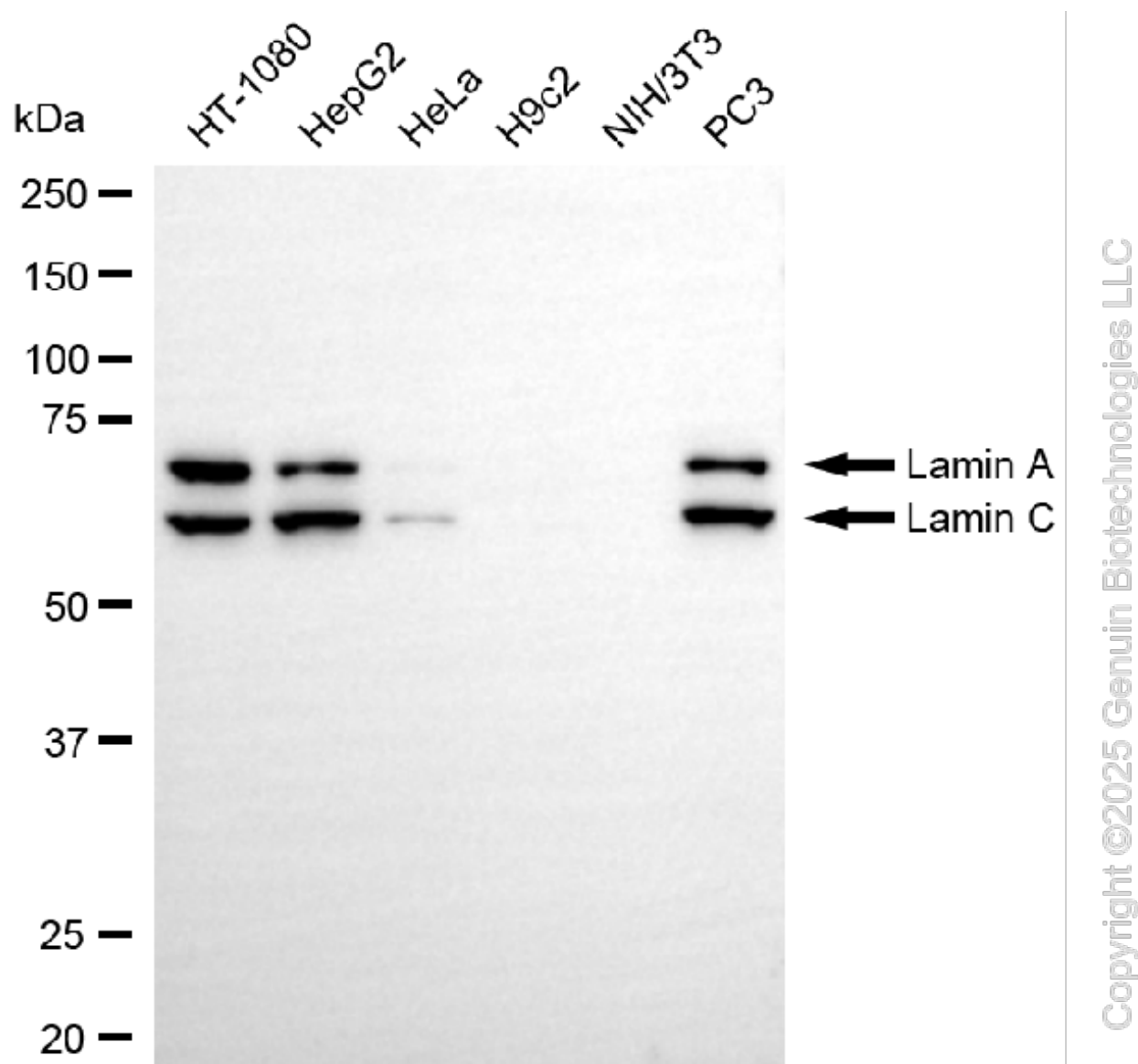
SALES@GENUINBIOTECH.COM
FAX: +1-540-855-7041

WWW.GENUINBIOTECH.COM

KD-Validated Anti-Lamin A/C Recombinant Rabbit Monoclonal Antibody

PAGE 3

Immunocytochemical staining of HT-1080 cells with anti-Lamin A/C antibody (Cat#61558, 1:1,000). Nuclei were stained blue with DAPI; Lamin A/C was stained magenta with Alexa Fluor® 647. Images were taken using Leica stellaris 5. Protein abundance based on laser Intensity and smart gain: High. Scale bar, 20 μ m.



Western blotting analysis using anti-Lamin A/C antibody (Cat#61558). Total cell lysates (30 μ g) from various cell lines were loaded and separated by SDS-PAGE. The blot was incubated with anti-Lamin A/C antibody (Cat#61558, 1:10,000) and HRP-conjugated goat anti-rabbit secondary antibody (Cat#201, 1:20,000) respectively. Image was developed using NaQ™ ECL Substrate Kit (Cat#716).

SUPPORT

SUPPORT@GENUINBIOTECH.COM
TEL: +1-540-855-7041

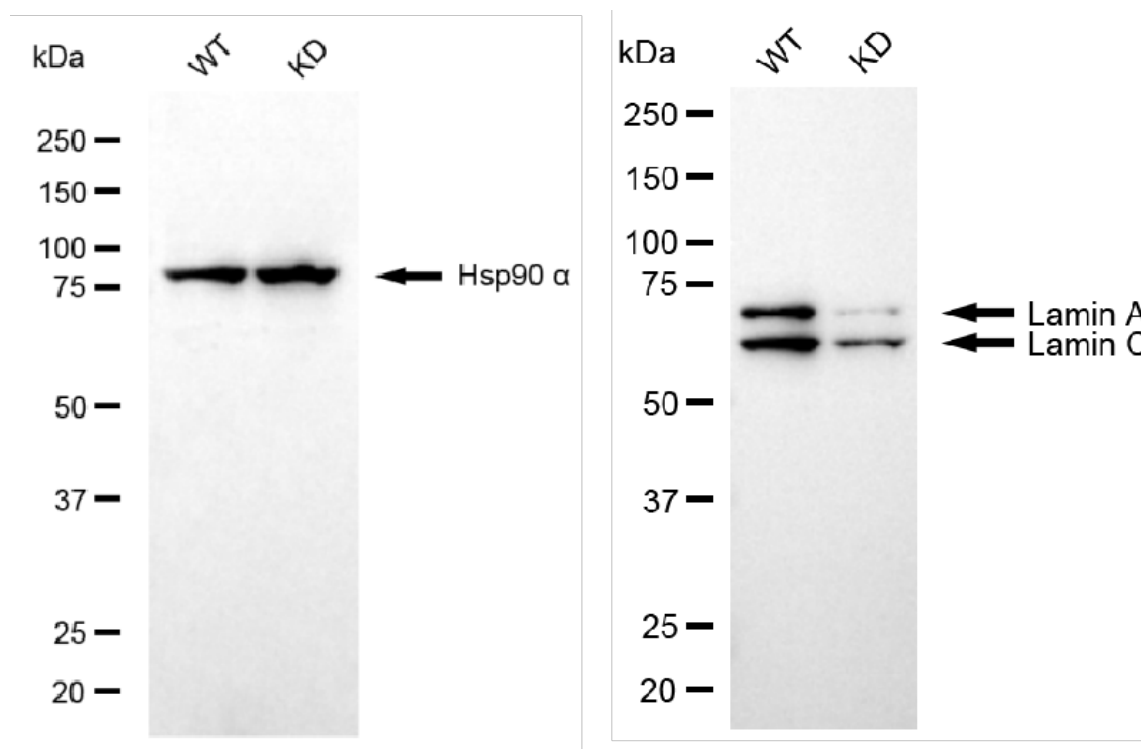
ORDERS

SALES@GENUINBIOTECH.COM
FAX: +1-540-855-7041

WWW.GENUINBIOTECH.COM

KD-Validated Anti-Lamin A/C Recombinant Rabbit Monoclonal Antibody

PAGE 4



Copyright ©2025 Genuin Biotechnologies LLC

Western blotting analysis using anti-Lamin A/C antibody (Cat#61558). Lamin A/C expression in wild type (WT) and LMNA knockdown (KD) HSHC cells with 20 µg of total cell lysates. Hsp90 α serves as a loading control. The blot was incubated with anti-Lamin A/C antibody (Cat#61558, 1:10,000) and HRP-conjugated goat anti-rabbit secondary antibody (Cat#201, 1:20,000) respectively. Image was developed using NaQ™ ECL Substrate Kit (Cat#716).

SUPPORT

SUPPORT@GENUINBIOTECH.COM
TEL: +1-540-855-7041

ORDERS

SALES@GENUINBIOTECH.COM
FAX: +1-540-855-7041

WWW.GENUINBIOTECH.COM