

KD-Validated Anti-Chromobox Recombinant Rabbit Monoclonal Antibody



Catalog #: 61562

Aliases

CBX5; Chromobox ; HP1-ALPHA; HP1; Chromobox Homolog 5 (HP1 Alpha Homolog, Drosophila); Heterochromatin Protein 1 Homolog Alpha; Chromobox Protein Homolog 5; HP1Hs-Alpha; Antigen P25; HP1alpha; HP1A; Chromobox Homolog 5 (Drosophila HP1 Alpha); Heterochromatin Protein 1-Alpha; HP1 Alpha Homolog (Drosophila); Epididymis Luminal Protein 25; Chromobox Homolog 5; HP1 Alpha Homolog; HP1Hs Alpha; HP1 Alpha; HEL25

Background

Gene Name: CBX5

NCBI Gene Entry: [23468](#)

UniProt Entry: [P45973](#)

Application Information

Molecular Weight: Predicted, 22 kDa, observed, 22 kDa

Clonality: Rabbit monoclonal antibody

Clone ID: 25GB2865

Species Reactivity: Human, mouse, rat

Applications Tested: Western blotting (WB), flow cytometry (FCM), immunocytochemistry (IC)

Immunogen

A synthesized peptide derived from human HP1 alpha

Isotype

Rabbit IgG

Storage Buffer

Supplied in PBS (pH 7.4) containing 50% glycerol, and 0.02% sodium azide.

Storage

Store at -20 °C for one year.

Recommended Dilutions

Western blotting (WB): 1:1,000-1:5,000

Flow Cytometry (FCM): 1:2,000

Immunocytochemistry (IC): 1:100-1:1,000

SUPPORT

SUPPORT@GENUINBIOTECH.COM
TEL: +1-540-855-7041

ORDERS

SALES@GENUINBIOTECH.COM
FAX: +1-540-855-7041

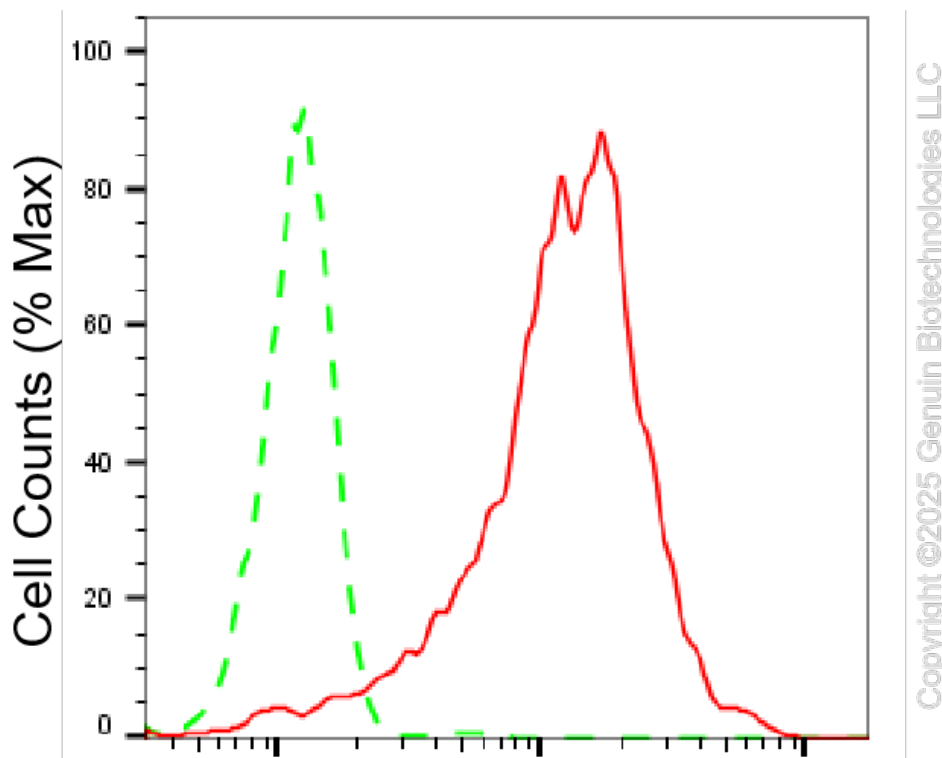
WWW.GENUINBIOTECH.COM

KD-Validated Anti-Chromobox Recombinant Rabbit Monoclonal Antibody

PAGE 2

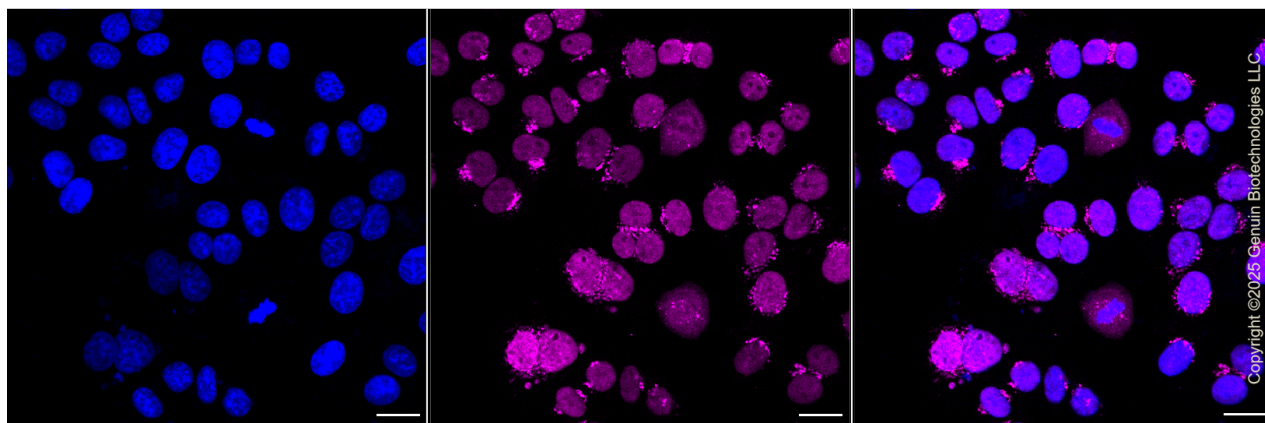
Note: This product is for research use only.

Validation Data



Chromobox 5-Alexa Fluor® 647

Flow cytometric analysis of Chromobox 5 expression in HepG2 cells using anti-Chromobox 5 antibody (Cat#61562, 1:2,000). Green, isotype control; red, Chromobox 5.



Immunocytochemical staining of HepG2 cells with anti-Chromobox 5 antibody (Cat#61562, 1:1,000). Nuclei were stained blue with DAPI; Chromobox 5 was stained magenta with Alexa Fluor® 647. Images were taken using Leica stellaris 5. Protein abundance based on laser Intensity and smart gain: High. Scale bar, 20 μ m.

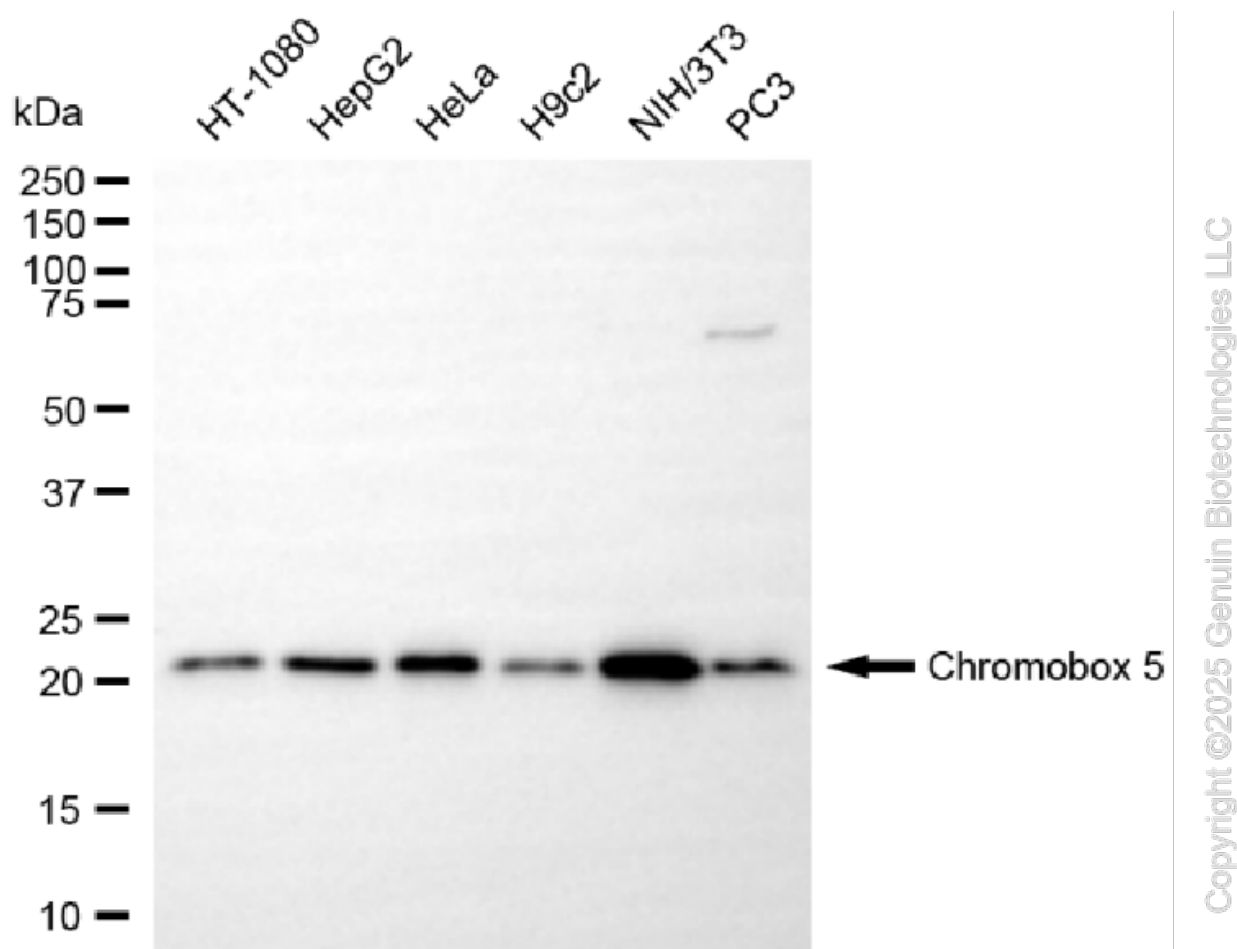
SUPPORT

SUPPORT@GENUINBIOTECH.COM
TEL: +1-540-855-7041

ORDERS

SALES@GENUINBIOTECH.COM
FAX: +1-540-855-7041

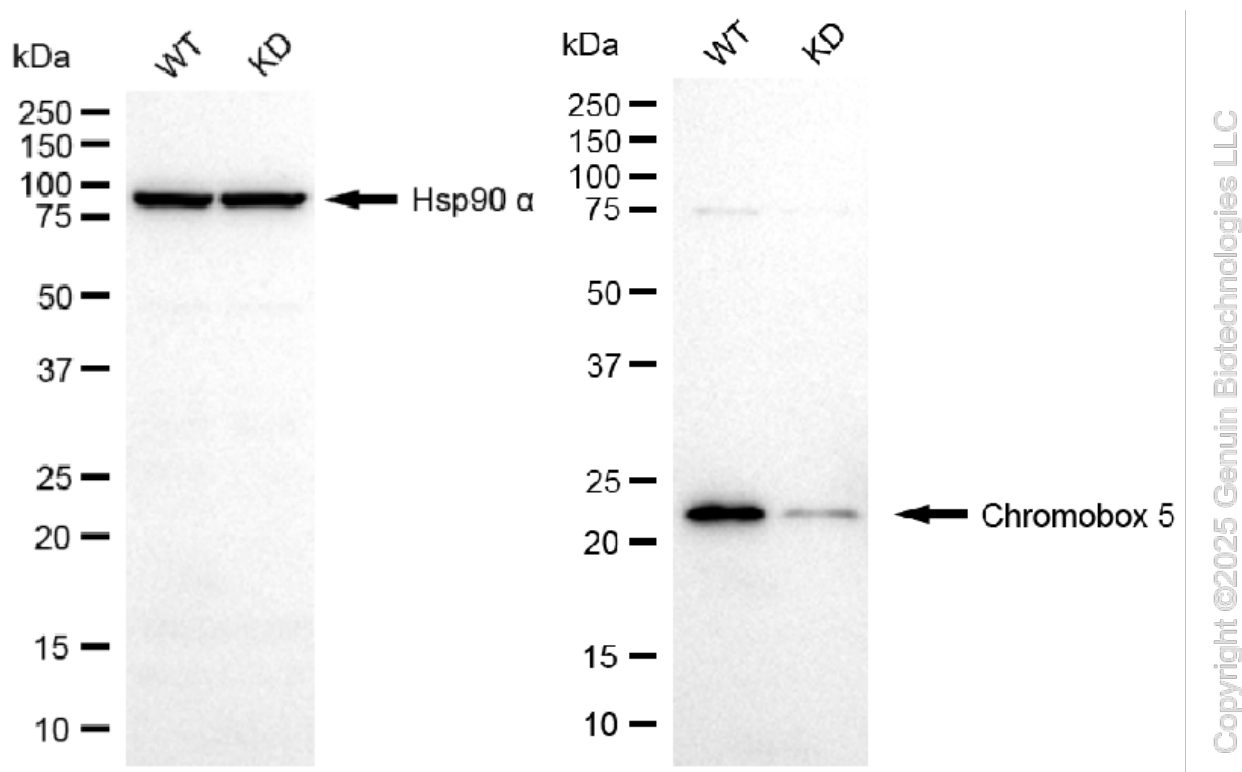
WWW.GENUINBIOTECH.COM



Western blotting analysis using anti-chromobox 5 antibody (Cat#61562). Total cell lysates (30 µg) from various cell lines were loaded and separated by SDS-PAGE. The blot was incubated with anti-chromobox 5 antibody (Cat#61562, 1:5,000) and HRP-conjugated goat anti-rabbit secondary antibody (Cat#201, 1:20,000) respectively. Image was developed using NaQ™ ECL Substrate Kit (Cat#716).

KD-Validated Anti-Chromobox Recombinant Rabbit Monoclonal Antibody

PAGE 4



Western blotting analysis using anti-chromobox 5 antibody (Cat#61562). Chromobox 5 expression in wild-type (WT) and chromobox 5 (CBX5) knockdown (KD) HeLa cells with 20 µg of total cell lysates. Hsp90 α serves as a loading control. The blot was incubated with anti-chromobox 5 antibody (Cat#61562, 1:5,000) and HRP-conjugated goat anti-rabbit secondary antibody (Cat#201, 1:20,000) respectively. Image was developed using NaQ™ ECL Substrate Kit (Cat#716).

SUPPORT

SUPPORT@GENUINBIOTECH.COM
TEL: +1-540-855-7041

ORDERS

SALES@GENUINBIOTECH.COM
FAX: +1-540-855-7041

WWW.GENUINBIOTECH.COM