

# KD-Validated Anti-CLP1 Recombinant Rabbit Monoclonal Antibody



**Catalog #: 61566**

## Aliases

CLP1; Cleavage Factor Polyribonucleotide Kinase Subunit 1; HEAB; Cleavage And Polyadenylation Factor I Subunit 1; Polyribonucleotide 5'-Hydroxyl-Kinase Clp1; Pre-mRNA Cleavage Complex II Protein Clp1; Polyadenylation Factor Clp1; Polynucleotide Kinase Clp1; EC 2.7.1.78; HClp1; CLP1, Cleavage And Polyadenylation Factor I Subunit, Homolog (S. Cerevisiae); Polyribonucleotide 5'-Hydroxyl-Kinase; Homolog Of Yeast CFIA Subunit Clp1p; ATP/GTP-Binding Protein; ATP/GTPbinding Protein; HCLP1

## Background

Gene Name: CLP1

NCBI Gene Entry: [10978](#)

UniProt Entry: [Q92989](#)

## Application Information

Molecular Weight: Predicted, 48 kDa, observed, 48 kDa

Clonality: Rabbit monoclonal antibody

Clone ID: 23GB3085

Species Reactivity: Human

Applications Tested: Western blotting (WB), flow cytometry (FCM), immunocytochemistry (IC)

## Immunogen

A synthesized peptide derived from human HEAB

## Isotype

Rabbit IgG

## Storage Buffer

Supplied in PBS (pH 7.4) containing 50% glycerol, and 0.02% sodium azide.

## Storage

Store at -20 °C for one year.

## Recommended Dilutions

Western Blotting (WB): 1:1,000-1:5,000

Flow Cytometry (FCM): 1:2,000

Immunocytochemistry (IC): 1:100-1:1,000

---

### SUPPORT

SUPPORT@GENUINBIOTECH.COM  
TEL: +1-540-855-7041

### ORDERS

SALES@GENUINBIOTECH.COM  
FAX: +1-540-855-7041

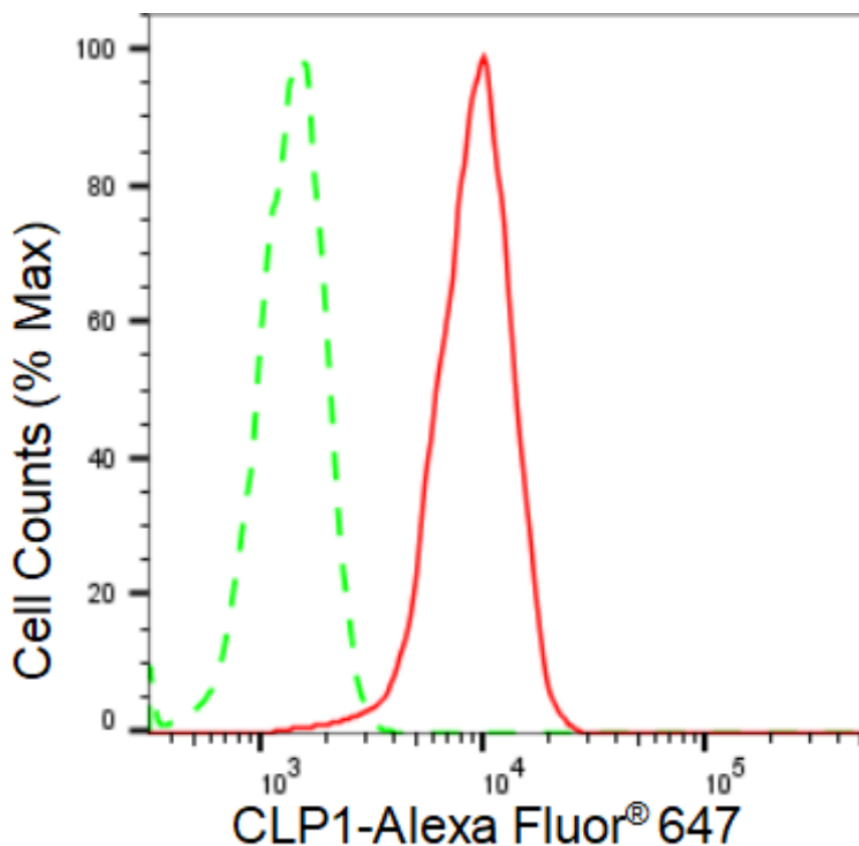
[WWW.GENUINBIOTECH.COM](http://WWW.GENUINBIOTECH.COM)

# KD-Validated Anti-CLP1 Recombinant Rabbit Monoclonal Antibody

PAGE 2

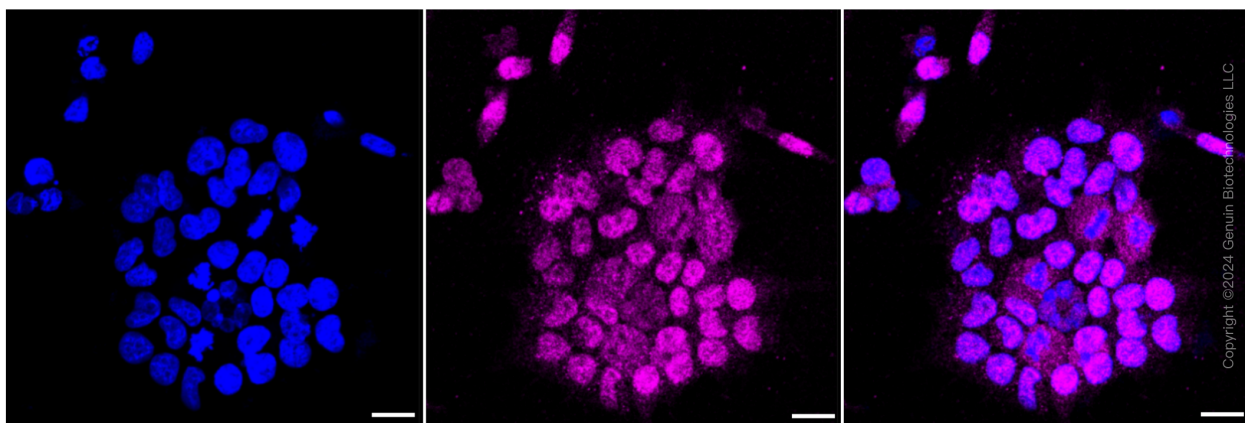
**Note:** This product is for research use only.

## Validation Data



Copyright ©2024 Genuin Biotechnologies LLC

Flow cytometric analysis of CLP1 expression in HeLa cells using CLP1 antibody (Cat#61566, 1:2,000). Green, isotype control; red, CLP1.



Copyright ©2024 Genuin Biotechnologies LLC

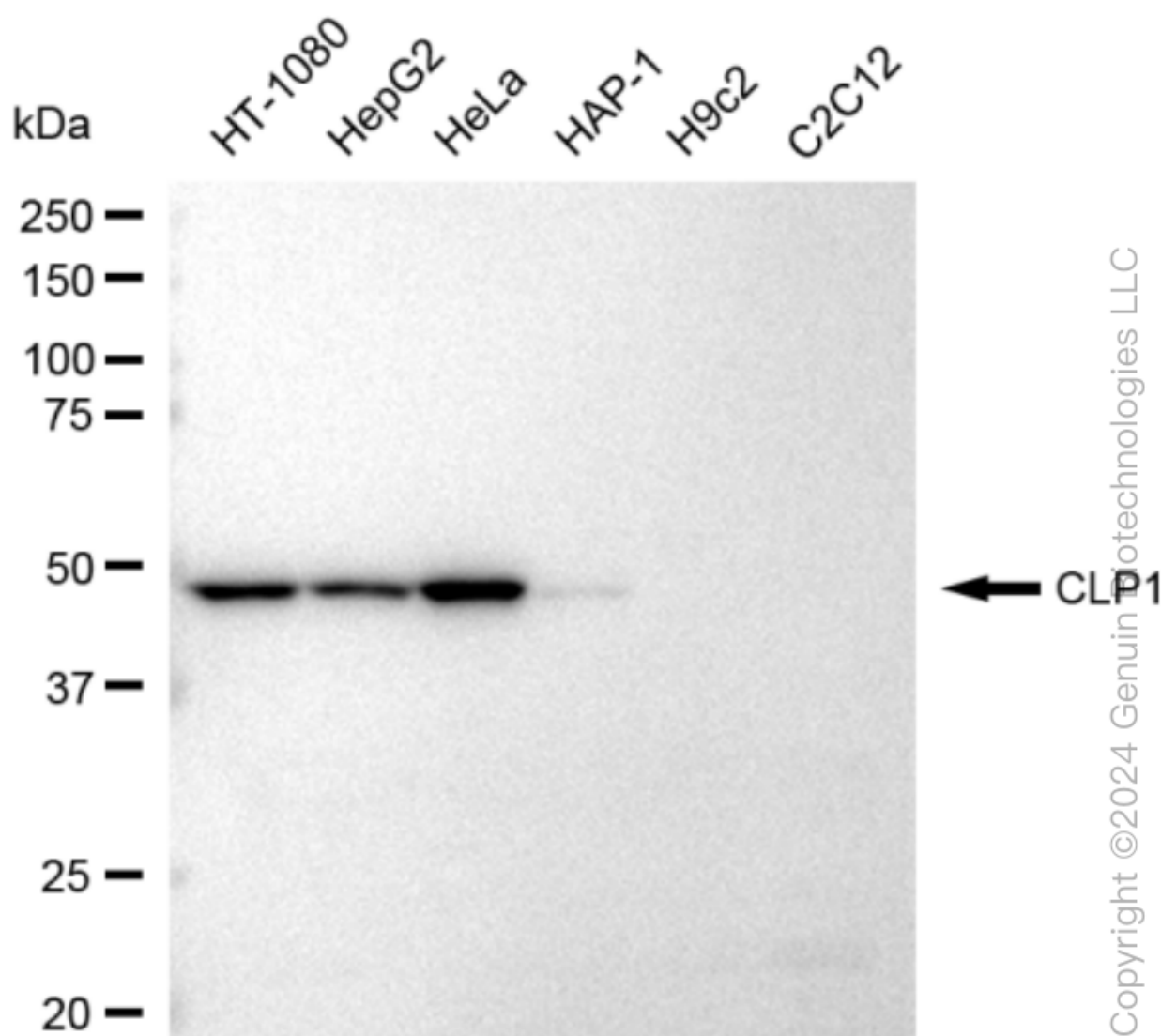
### SUPPORT

SUPPORT@GENUINBIOTECH.COM  
TEL: +1-540-855-7041

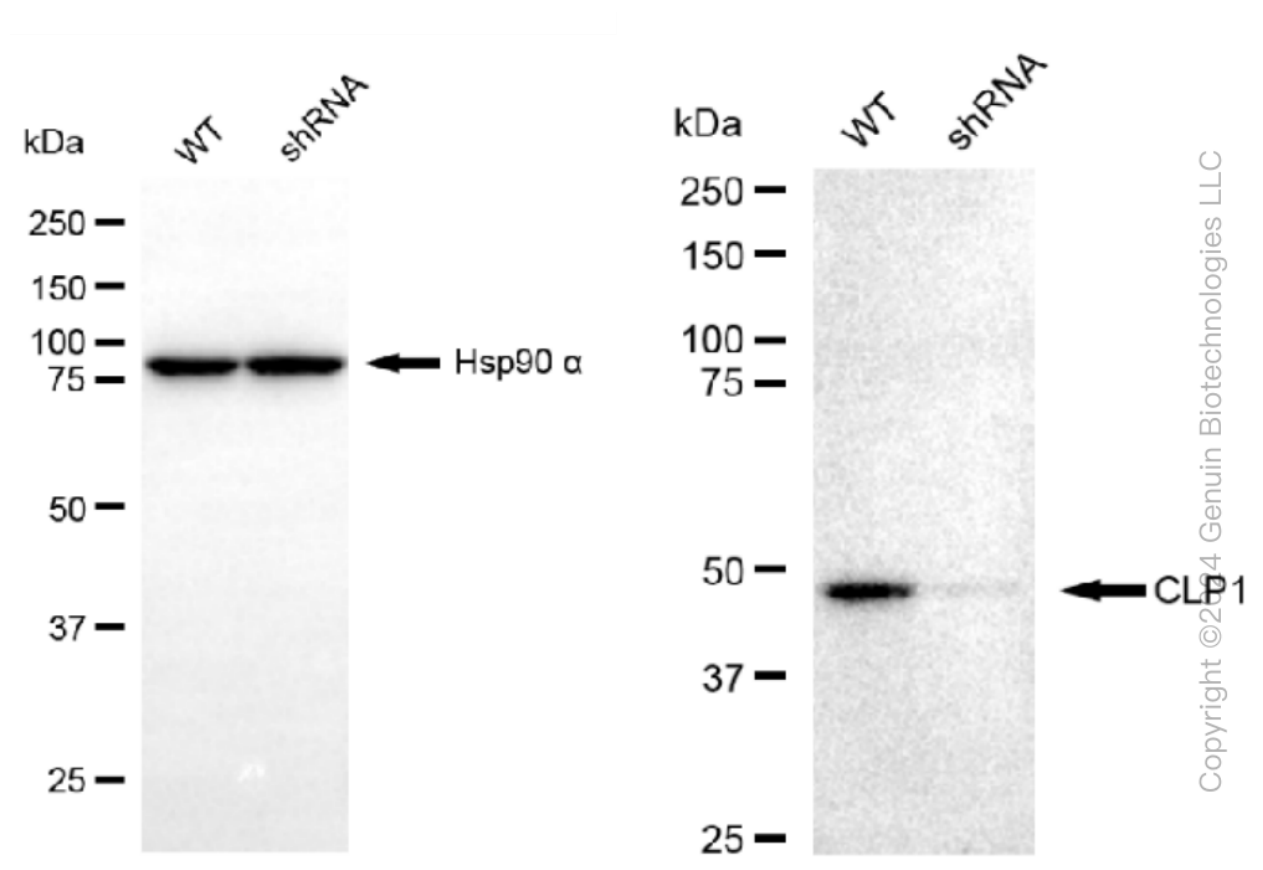
### ORDERS

SALES@GENUINBIOTECH.COM  
FAX: +1-540-855-7041

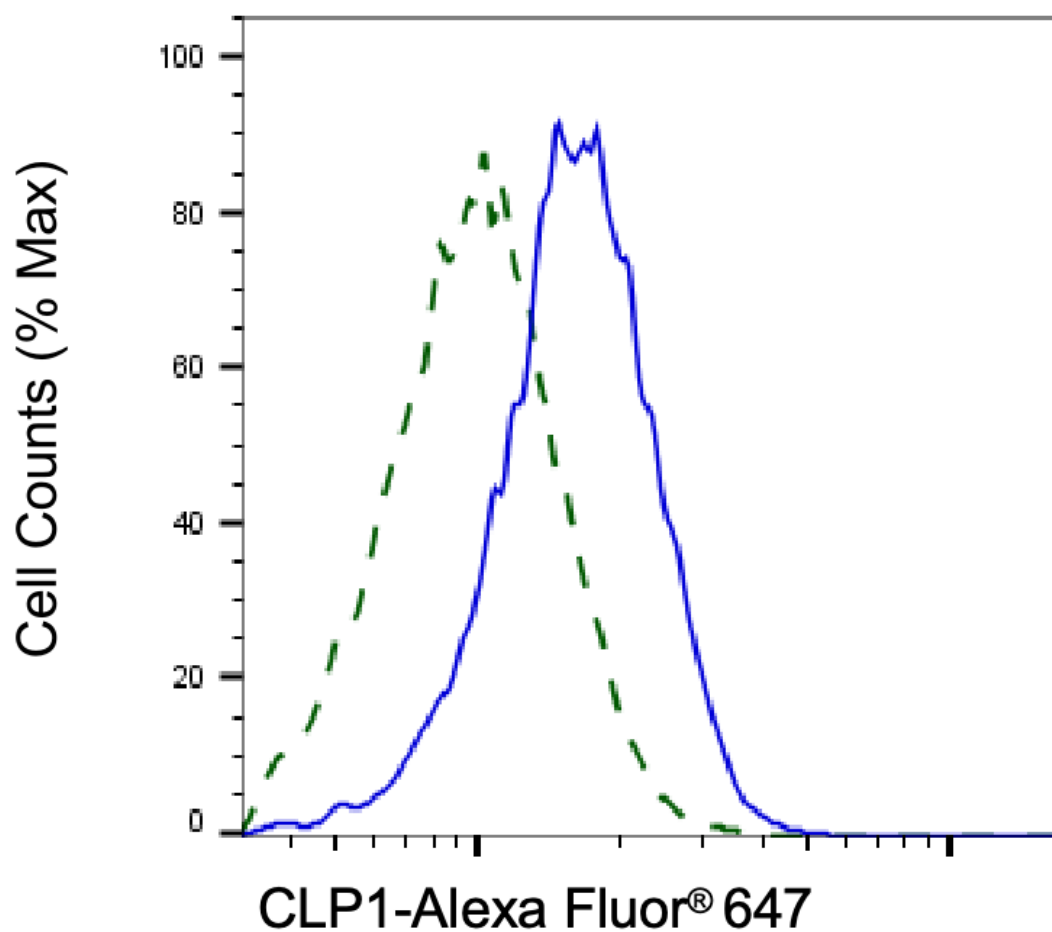
[WWW.GENUINBIOTECH.COM](http://WWW.GENUINBIOTECH.COM)



Western blotting analysis using anti-CLP1 antibody (Cat#61566). Total cell lysates (30  $\mu$ g) from various cell lines were loaded and separated by SDS-PAGE. The blot was incubated with anti-CLP1 antibody (Cat#61566, 1:5,000) and HRP-conjugated goat anti-rabbit secondary antibody (Cat#201, 1:20,000) respectively. Image was developed using FeQ™ ECL Substrate Kit (Cat#226).



Western blotting analysis using anti-CLP1 antibody (Cat#61566). CLP1 expression in wild type (WT) and CLP1 shRNA knockdown (KD) HeLa cells with 30  $\mu$ g of total cell lysates. Hsp90  $\alpha$  serves as a loading control. The blot was incubated with anti-CLP1 antibody (Cat#61566, 1:5,000) and HRP-conjugated goat anti-rabbit secondary antibody (Cat#201, 1:20,000) respectively. Image was developed using FeQ™ ECL Substrate Kit (Cat#226).



Copyright ©2025 Genuin Biotechnologies LLC

Validation of CLP1 knockdown using flow cytometry. Wild-type(WT, Blue) and knockdown(KD, Green) HeLa cells were stained with anti-CLP1 antibody (Cat#61566, 1:2,000) and analyzed using BD flow cytometer.