

# KD-Validated Anti-Desmin Recombinant Rabbit Monoclonal Antibody



**Catalog #: 61568**

## Aliases

DES; Desmin; CSM1; CSM2; Intermediate Filament Protein; Cardiomyopathy, Dilated 1I; LGMD2R; CMD1I; Cardiomyopathy, Dilated 1F (Autosomal Dominant); Epididymis Secretory Sperm Binding Protein; LGMD1D; LGMD1E; CDCD3

## Background

Gene Name: DES

NCBI Gene Entry: [1674](#)

UniProt Entry: [P17661](#)

## Application Information

Molecular Weight: Predicted, 54 kDa, observed, 53 kDa

Clonality: Rabbit monoclonal antibody

Clone ID: 23GB3120

Species Reactivity: Human, rat

Applications Tested: Western blotting (WB), flow cytometry (FCM), immunocytochemistry (IC)

## Immunogen

A synthesized peptide derived from human Desmin

## Isotype

Rabbit IgG

## Storage Buffer

Supplied in PBS (pH 7.4) containing 50% glycerol, and 0.02% sodium azide.

## Storage

Store at -20 °C for one year.

## Recommended Dilutions

Western Blotting (WB): 1:1,000-1:5,000

Flow Cytometry (FCM): 1:2,000

Immunocytochemistry (IC): 1:100-1:1,000

**Note:** This product is for research use only.

---

### SUPPORT

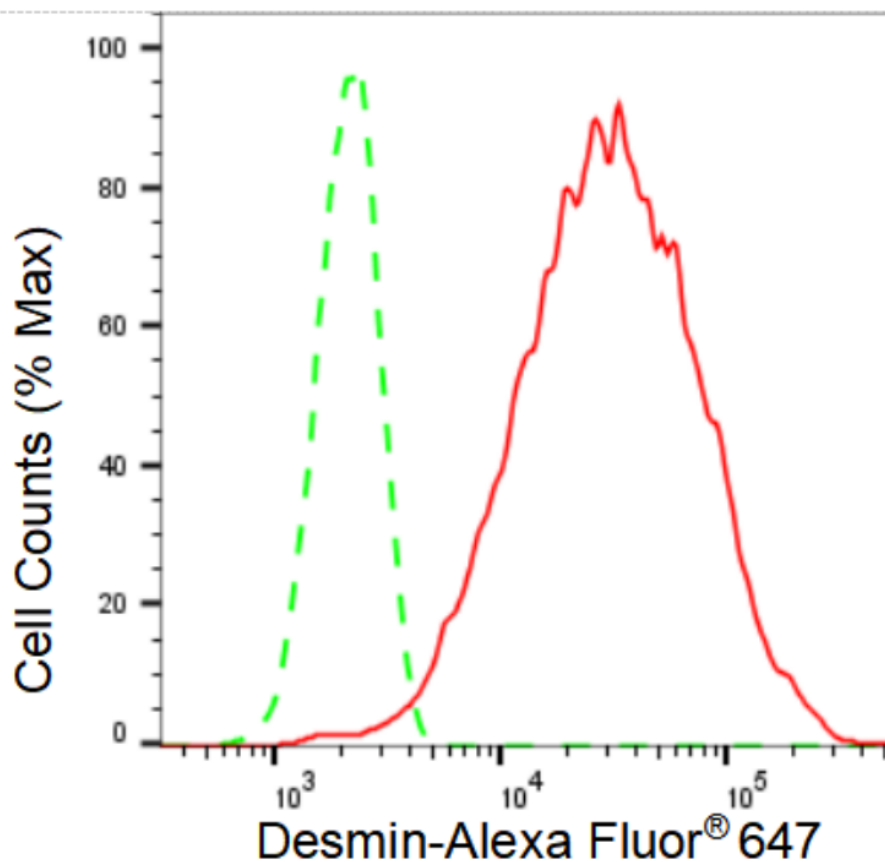
SUPPORT@GENUINBIOTECH.COM  
TEL: +1-540-855-7041

### ORDERS

SALES@GENUINBIOTECH.COM  
FAX: +1-540-855-7041

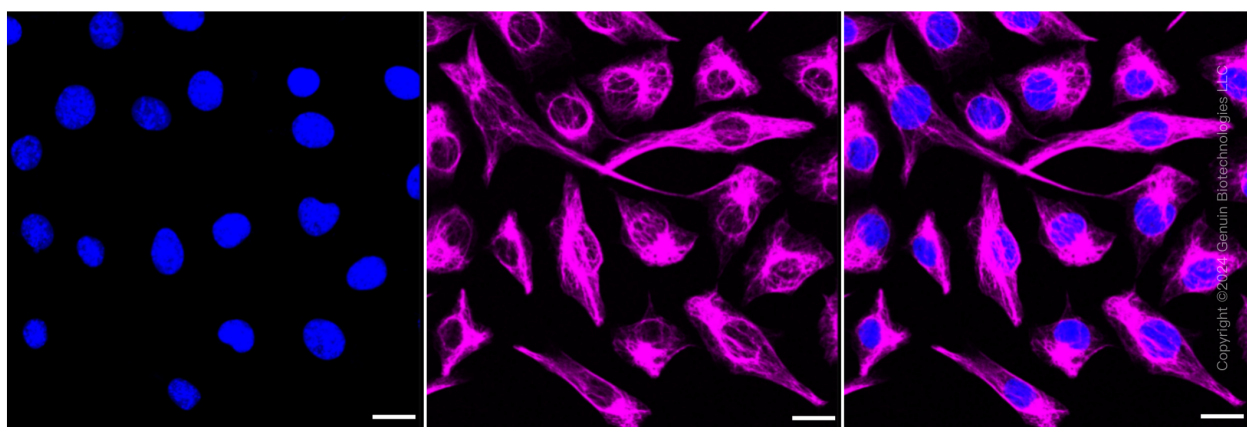
[WWW.GENUINBIOTECH.COM](http://WWW.GENUINBIOTECH.COM)

## Validation Data



Copyright ©2024 Genuin Biotechnologies LLC

Flow cytometric analysis of Desmin expression in C2C12 cells using Desmin antibody (Cat#61568, 1:2,000). Green, isotype control; red, Desmin.



Copyright ©2024 Genuin Biotechnologies LLC

Immunocytochemical staining of C2C12 cells with Desmin antibody (Cat#61568, 1:1,000). Nuclei were stained blue with DAPI; Desmin was stained magenta with Alexa Fluor® 647. Images were taken using Leica stellaris 5. Protein abundance based on laser Intensity and smart gain: High. Scale bar: 20  $\mu$ m.

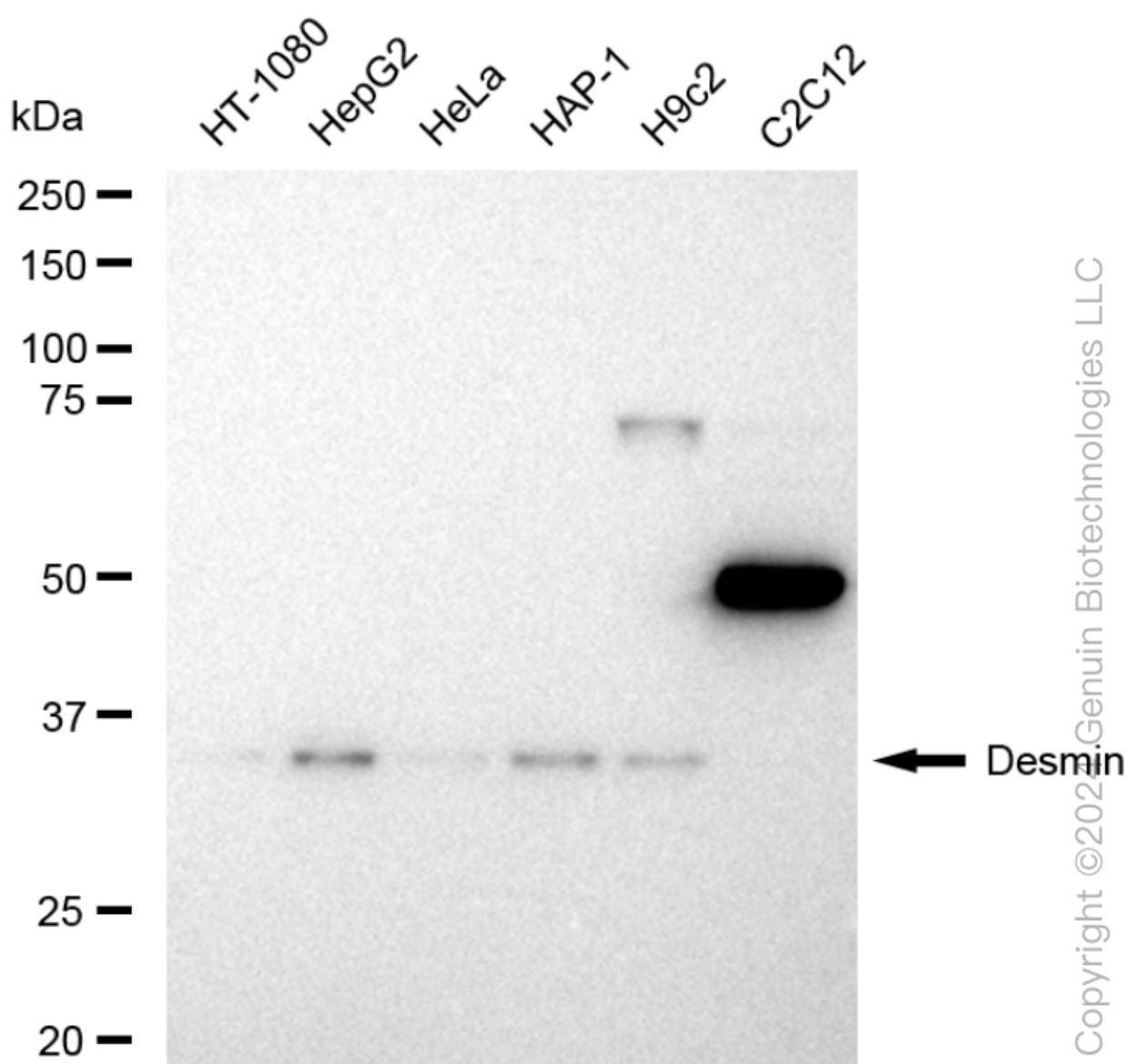
### SUPPORT

SUPPORT@GENUINBIOTECH.COM  
TEL: +1-540-855-7041

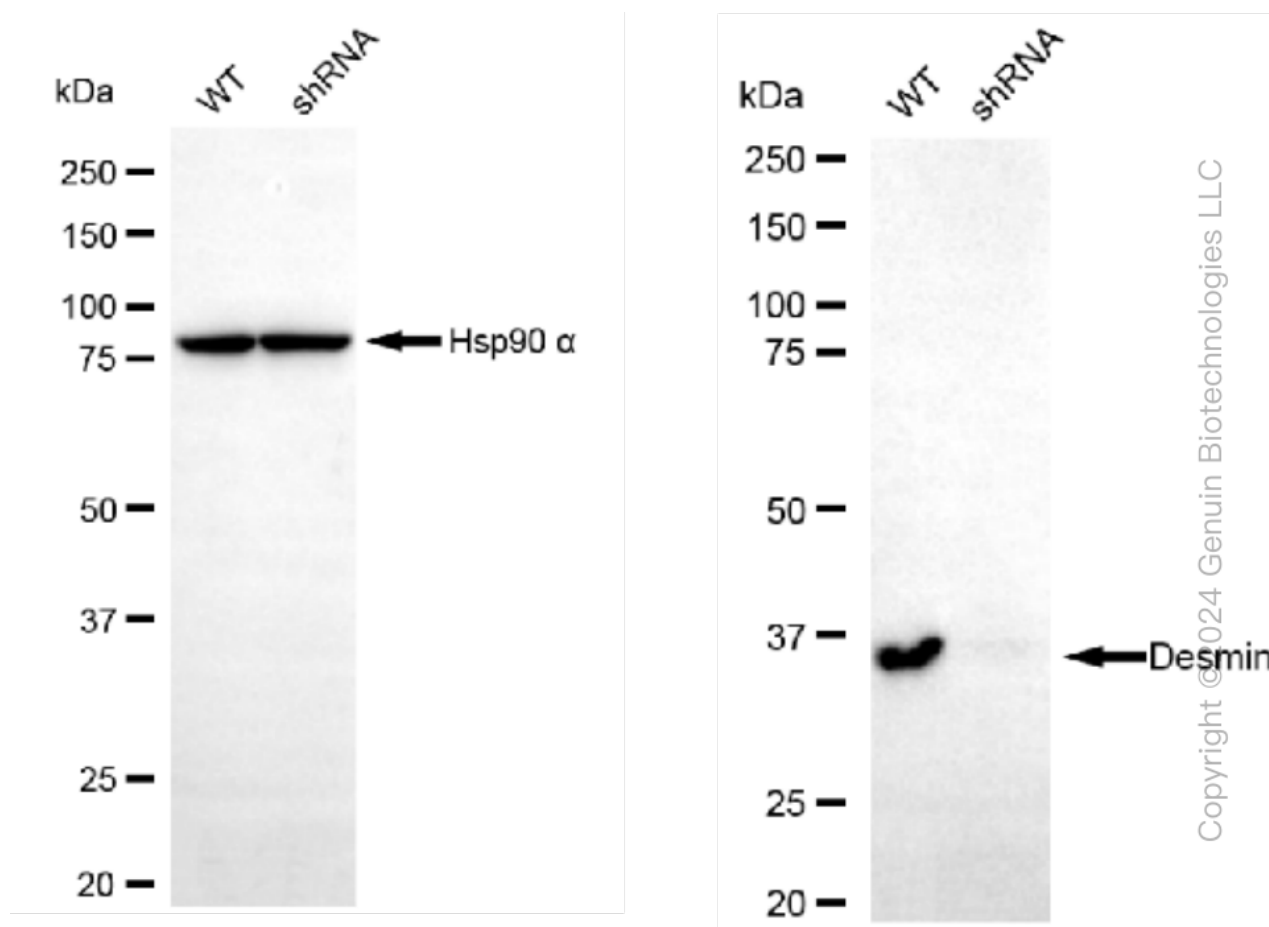
### ORDERS

SALES@GENUINBIOTECH.COM  
FAX: +1-540-855-7041

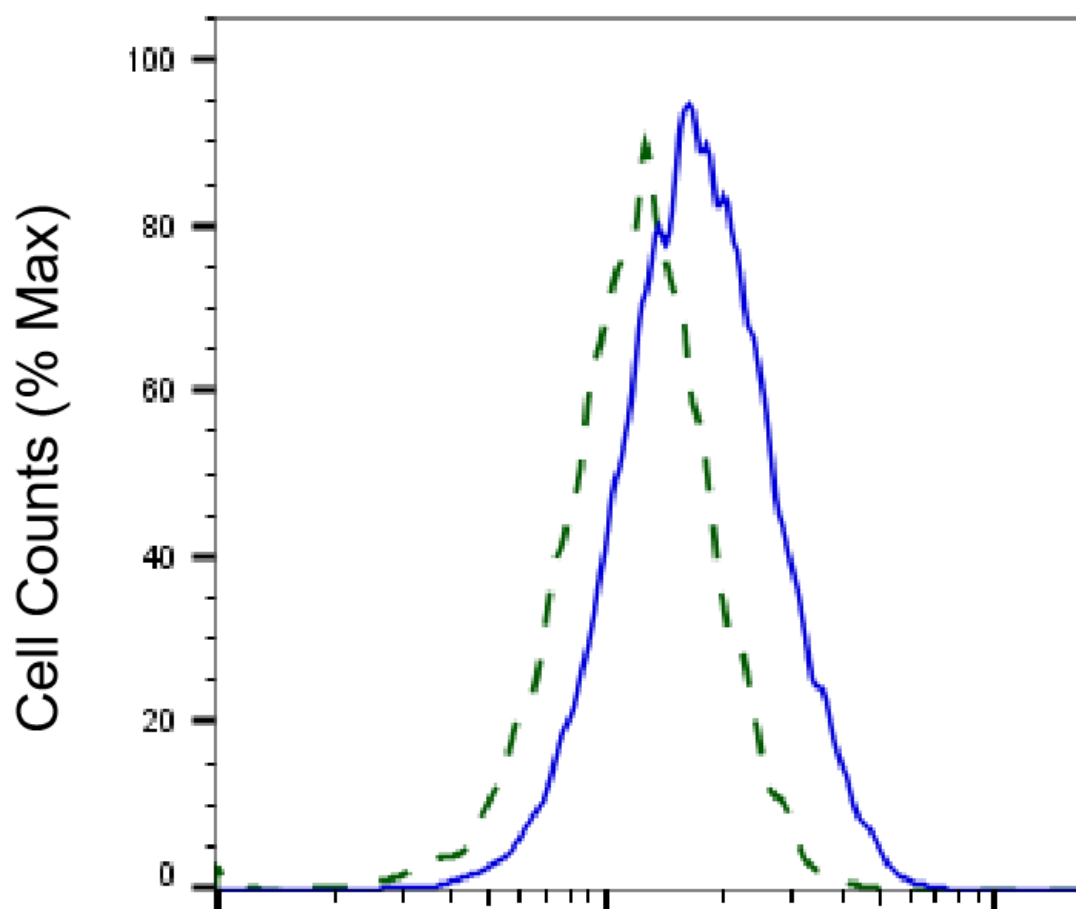
[WWW.GENUINBIOTECH.COM](http://WWW.GENUINBIOTECH.COM)



Western blotting analysis using anti-Desmin antibody (Cat#61568). Total cell lysates (30  $\mu$ g) from various cell lines were loaded and separated by SDS-PAGE. The blot was incubated with anti-Desmin antibody (Cat#61568, 1:5,000) and HRP-conjugated goat anti-rabbit secondary antibody (Cat#201, 1:20,000) respectively. Image was developed using FeQ™ ECL Substrate Kit (Cat#226).



Western blotting analysis using anti-Desmin antibody (Cat#61568). Desmin expression in wild type (WT) and Desmin shRNA knockdown (KD) HT-1080 cells with 30 µg of total cell lysates. Hsp90 α serves as a loading control. The blot was incubated with anti-Desmin antibody (Cat#61568, 1:20,000) and HRP-conjugated goat anti-rabbit secondary antibody (Cat#201, 1:20,000) respectively. Image was developed using FeQ™ ECL Substrate Kit (Cat#226).



Copyright ©2025 Genuin Biotechnologies LLC

## Desmin-Alexa Fluor® 647

Validation of Desmin knockdown using flow cytometry. Wild-type(WT, Blue) and knockdown(KD, Green) HeLa cells were stained with anti-Desmin antibody (Cat#61568, 1:2,000) and analyzed using BD flow cytometer.