

KD-Validated Anti-FLI1 Recombinant Rabbit Monoclonal Antibody



Catalog #: 61569

Aliases

FLI1; Fli-1 Proto-Oncogene, ETS Transcription Factor; SIC-; EWSR2; FLI-1; Friend Leukemia Integration 1 Transcription Factor; Friend Leukemia Virus Integration 1; Transcription Factor ERGB; Ewing Sarcoma Breakpoint Region 2; Proto-Oncogene Fli-1; BDPLT21

Background

Gene Name: FLI1

NCBI Gene Entry: [2313](#)

UniProt Entry: [Q01543](#)

Application Information

Molecular Weight: Predicted, 51 kDa, observed, 51 kDa

Clonality: Rabbit monoclonal antibody

Clone ID: 25GB2875

Species Reactivity: Human, mouse, rat

Applications Tested: Western blotting (WB), flow cytometry (FCM), immunocytochemistry (IC)

Immunogen

A synthesized peptide derived from human FLI1

Isotype

Rabbit IgG

Storage Buffer

Supplied in PBS (pH 7.4) containing 50% glycerol, and 0.02% sodium azide.

Storage

Store at -20 °C for one year.

Recommended Dilutions

Western blotting (WB): 1:1,000-1:5,000

Flow Cytometry (FCM): 1:2,000

Immunocytochemistry (IC): 1:100-1:1,000

Note: This product is for research use only.

SUPPORT

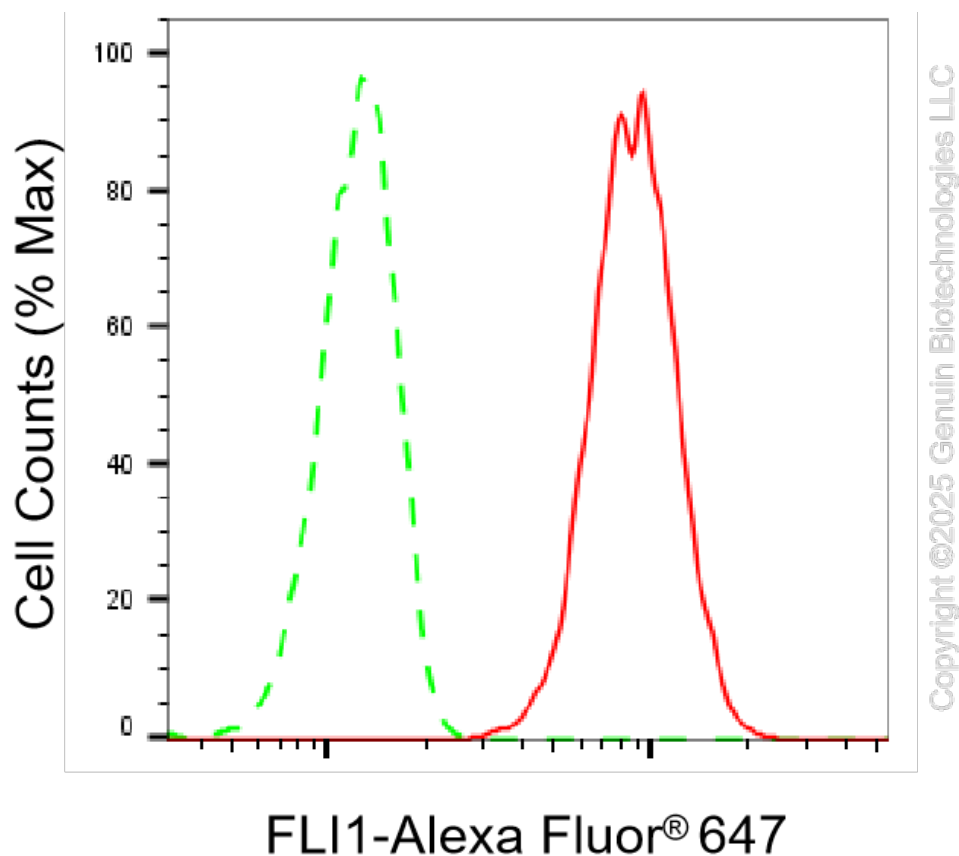
SUPPORT@GENUINBIOTECH.COM
TEL: +1-540-855-7041

ORDERS

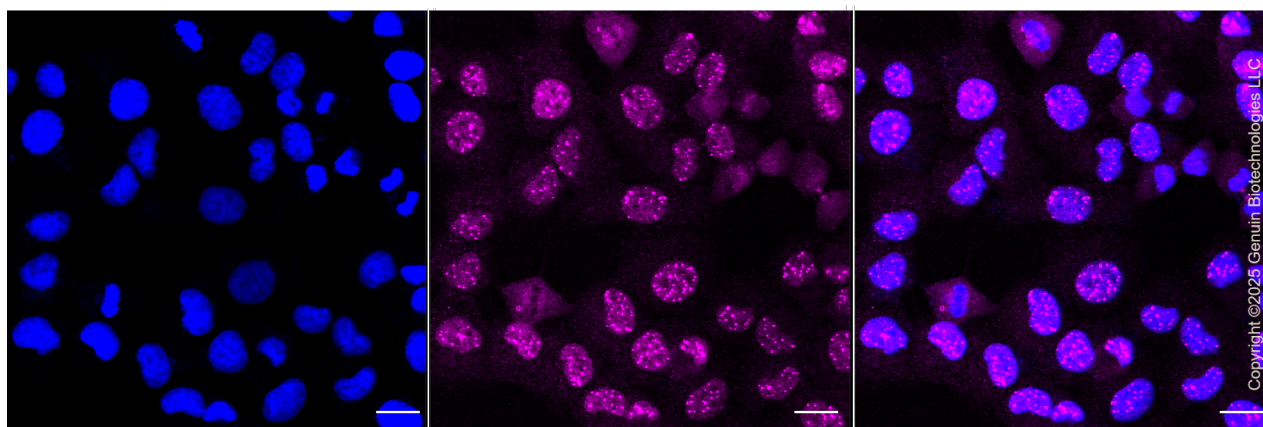
SALES@GENUINBIOTECH.COM
FAX: +1-540-855-7041

WWW.GENUINBIOTECH.COM

Validation Data



Flow cytometric analysis of FLI1 expression in HT-1080 cells using anti-FLI1 antibody (Cat#61569, 1:2,000). Green, isotype control; red, FLI1.



Immunocytochemical staining of HT-1080 cells with anti-FLI1 antibody (Cat#61569, 1:1,000). Nuclei were stained blue with DAPI; FLI1 was stained magenta with Alexa Fluor® 647. Images were taken using Leica stellaris 5. Protein abundance based on laser Intensity and smart gain: Medium. Scale bar, 20 μm.

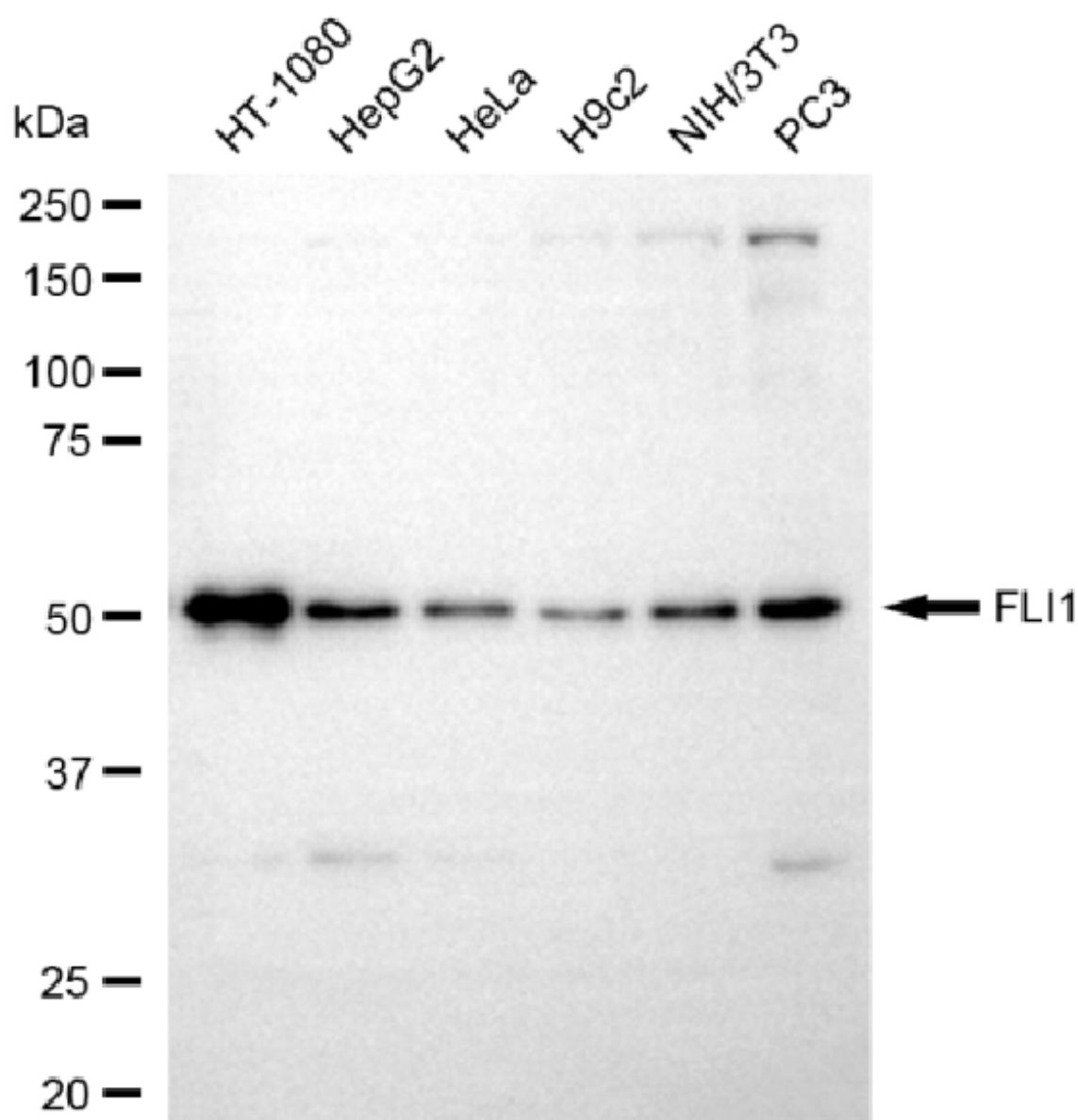
SUPPORT

SUPPORT@GENUINBIOTECH.COM
TEL: +1-540-855-7041

ORDERS

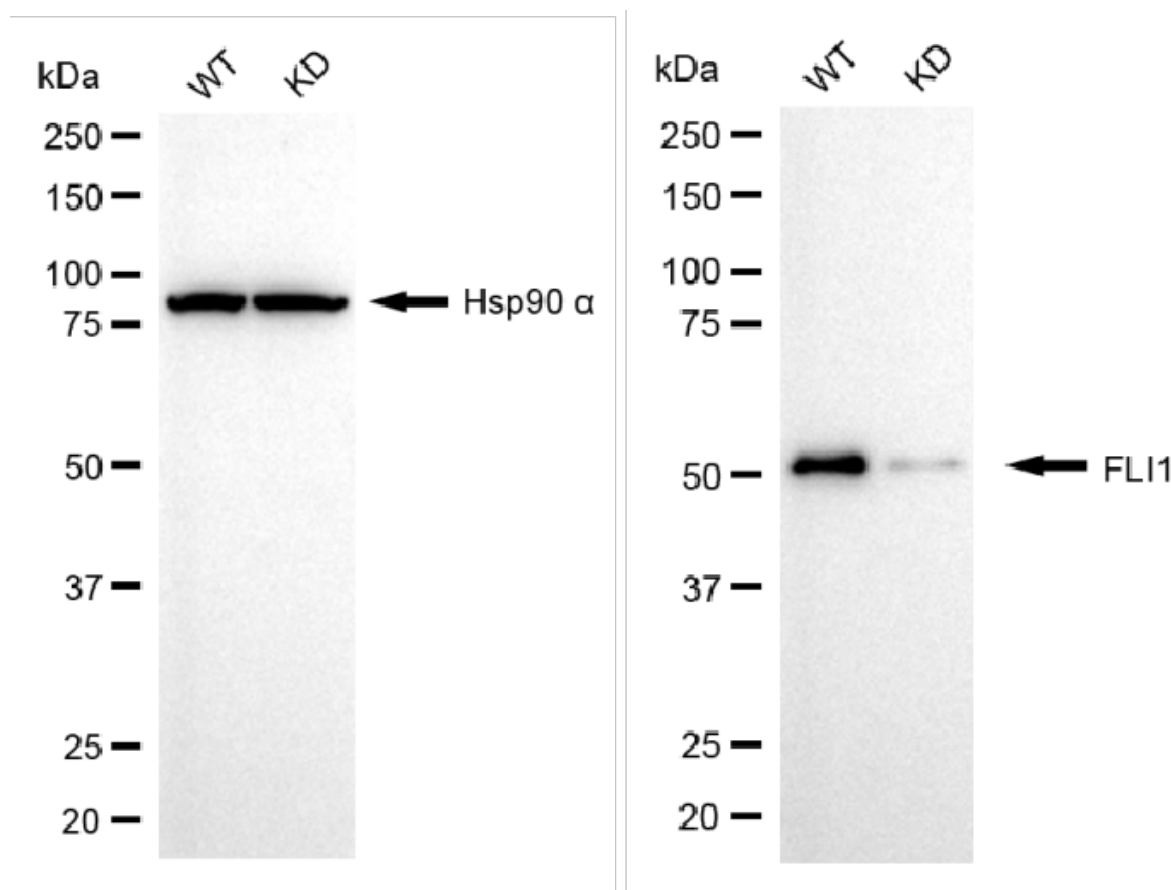
SALES@GENUINBIOTECH.COM
FAX: +1-540-855-7041

WWW.GENUINBIOTECH.COM



Copyright ©2025 Genuin Biotechnologies LLC

Western blotting analysis using anti-FLI1 antibody (Cat#61569). Total cell lysates (30 µg) from various cell lines were loaded and separated by SDS-PAGE. The blot was incubated with anti-FLI1 antibody (Cat#61569, 1:5,000) and HRP-conjugated goat anti-rabbit secondary antibody (Cat#201, 1:20,000) respectively. Image was developed using FeQ™ ECL Substrate Kit (Cat#226).



Copyright ©2025 Genuin Biotechnologies LLC

Western blotting analysis using anti-FLI1 antibody (Cat#61569). FLI1 expression in wild-type (WT) and FLI1 knockdown (KD) HT-1080 cells with 20 µg of total cell lysates. Hsp90 α serves as a loading control. The blot was incubated with anti-FLI1 antibody (Cat#61569, 1:5,000) and HRP-conjugated goat anti-rabbit secondary antibody (Cat#201, 1:20,000) respectively. Image was developed using NaQ™ ECL Substrate Kit (Cat#716).