

# KD-Validated Anti-IKBKB Recombinant Rabbit Monoclonal Antibody



**Catalog #: 61572**

## Aliases

IKBKB; Inhibitor Of Nuclear Factor Kappa B Kinase Subunit Beta; IKK-Beta; NFKB1KB; IKK2; IKKB; Inhibitor Of Kappa Light Polypeptide Gene Enhancer In B-Cells, Kinase Beta; Inhibitor Of Nuclear Factor Kappa-B Kinase Subunit Beta; Nuclear Factor NF-Kappa-B Inhibitor Kinase Beta; Serine/Threonine Protein Kinase IKBKB; I-Kappa-B-Kinase Beta; I-Kappa-B Kinase 2; EC 2.7.11.10; IKK-2; Nuclear Factor Kappa B Kinase Subunit Beta; EC 2.7.11.1; EC 2.7.11; IMD15A; IMD15B; IMD15; IKK-B; IkbKB

## Background

Gene Name: IKBKB

NCBI Gene Entry: [3551](#)

UniProt Entry: [O14920](#)

## Application Information

Molecular Weight: Predicted, 87 kDa, observed, 87 kDa

Clonality: Rabbit monoclonal antibody

Clone ID: 25GB2895

Species Reactivity: Human, mouse

Applications Tested: Western blotting (WB), flow cytometry (FCM), immunocytochemistry (IC)

## Immunogen

A synthesized peptide derived from human IKK beta

## Isotype

Rabbit IgG

## Storage Buffer

Supplied in PBS (pH 7.4) containing 50% glycerol, and 0.02% sodium azide.

## Storage

Store at -20 °C for one year.

## Recommended Dilutions

Western blotting (WB): 1:1,000-1:5,000

Flow Cytometry (FCM): 1:2,000

Immunocytochemistry (IC): 1:100-1:1,000

---

### SUPPORT

SUPPORT@GENUINBIOTECH.COM  
TEL: +1-540-855-7041

### ORDERS

SALES@GENUINBIOTECH.COM  
FAX: +1-540-855-7041

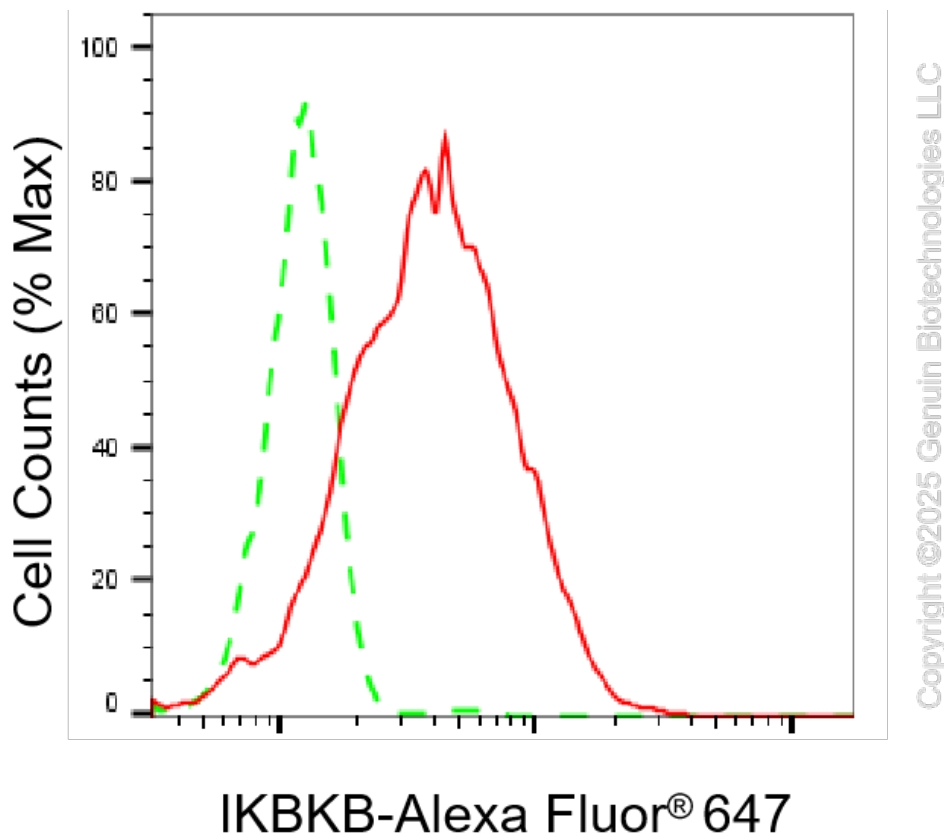
[WWW.GENUINBIOTECH.COM](http://WWW.GENUINBIOTECH.COM)

## KD-Validated Anti-IKBKB Recombinant Rabbit Monoclonal Antibody

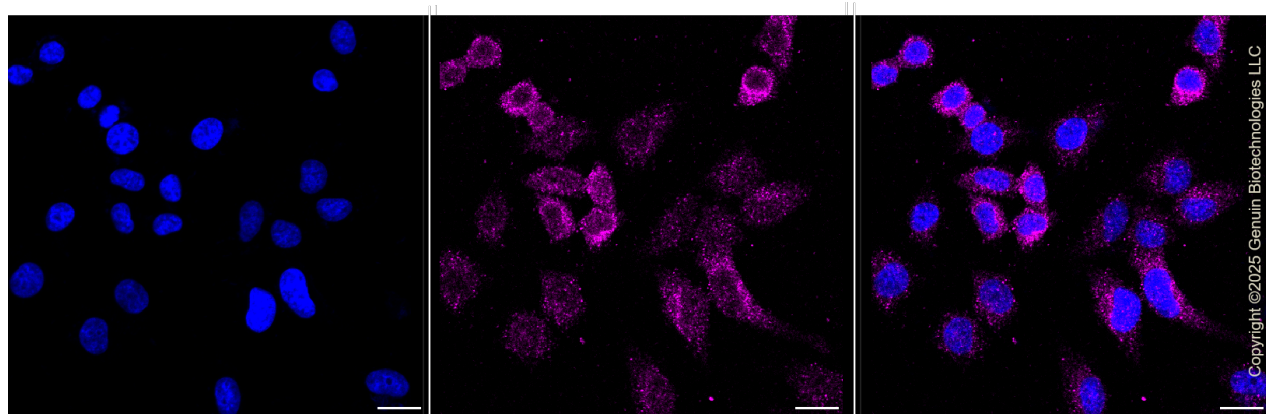
PAGE 2

**Note:** This product is for research use only.

### Validation Data



Flow cytometric analysis of IKBKB expression in HepG2 cells using anti-IKBKB antibody (Cat#61572, 1:2,000). Green, isotype control; red, IKBKB.



Immunocytochemical staining of HepG2 cells with anti-IKBK antibody (Cat#61572, 1:1,000). Nuclei were stained blue with DAPI; IKBK was stained magenta with Alexa Fluor® 647. Images were taken using Leica stellaris 5. Protein abundance based on laser Intensity and smart gain:

#### SUPPORT

SUPPORT@GENUINBIOTECH.COM  
TEL: +1-540-855-7041

#### ORDERS

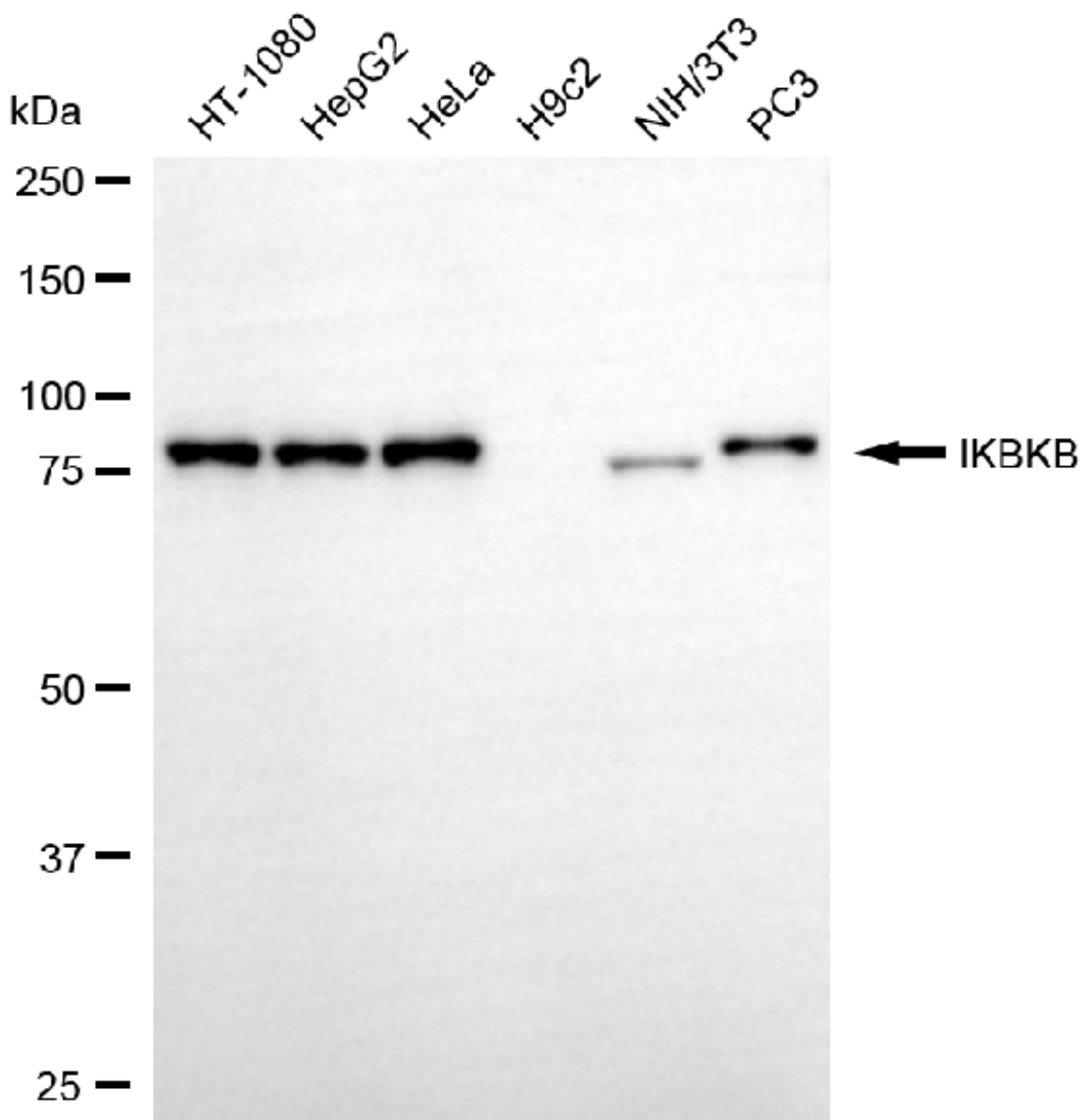
SALES@GENUINBIOTECH.COM  
FAX: +1-540-855-7041

[WWW.GENUINBIOTECH.COM](http://WWW.GENUINBIOTECH.COM)

## KD-Validated Anti-IKBKB Recombinant Rabbit Monoclonal Antibody

PAGE 3

Medium. Scale bar, 20  $\mu$ m.



Copyright ©2025 Genuin Biotechnologies LLC

Western blotting analysis using anti-IKBKB antibody (Cat#61572). Total cell lysates (30  $\mu$ g) from various cell lines were loaded and separated by SDS-PAGE. The blot was incubated with anti-IKBKB antibody (Cat#61572, 1:5,000) and HRP-conjugated goat anti-rabbit secondary antibody (Cat#201, 1:20,000) respectively. Image was developed using NaQ™ ECL Substrate Kit (Cat#716).

### SUPPORT

SUPPORT@GENUINBIOTECH.COM  
TEL: +1-540-855-7041

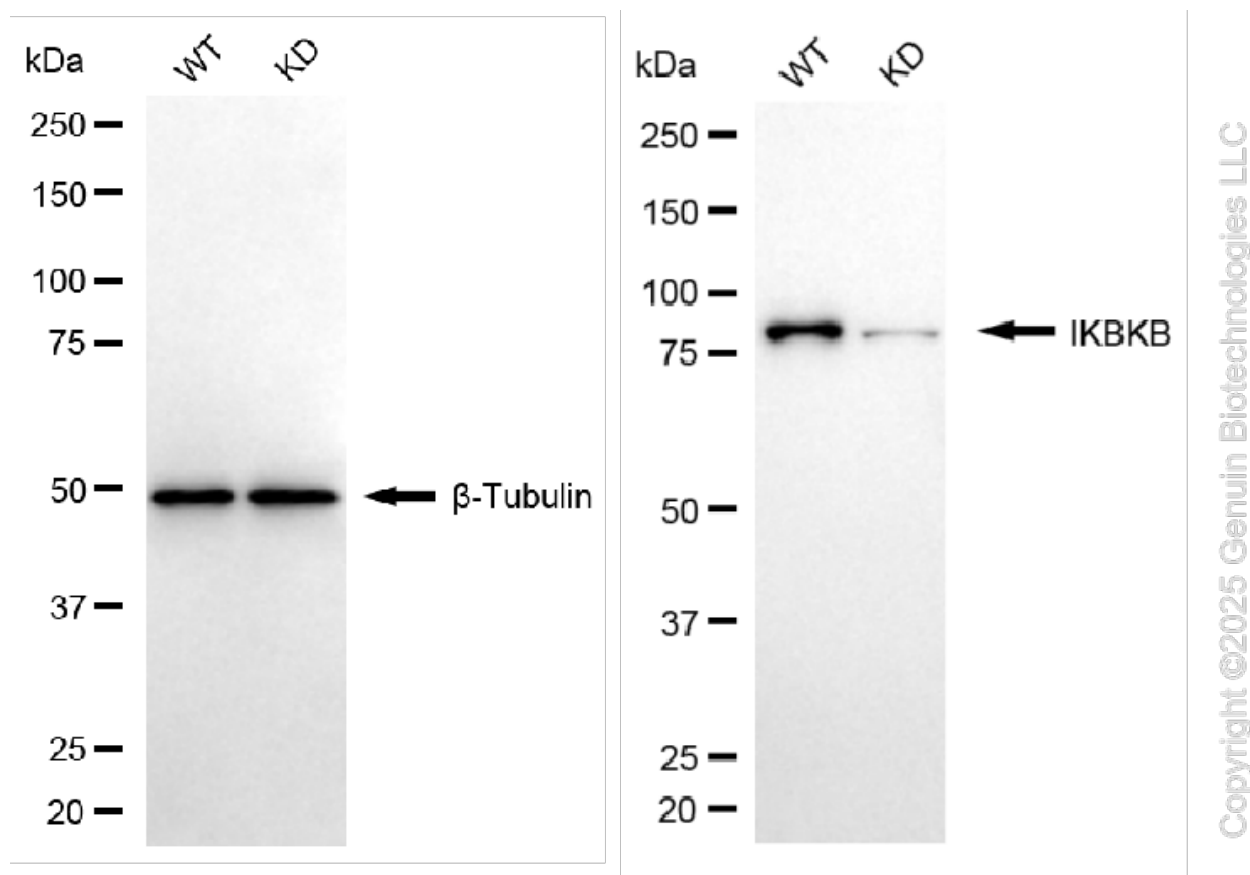
### ORDERS

SALES@GENUINBIOTECH.COM  
FAX: +1-540-855-7041

[WWW.GENUINBIOTECH.COM](http://WWW.GENUINBIOTECH.COM)

## KD-Validated Anti-IKBKB Recombinant Rabbit Monoclonal Antibody

PAGE 4



Western blotting analysis using anti-IKBKB antibody (Cat#61572). IKBKB expression in wild type (WT) and IKBKB knockdown (KD) HSHC cells with 20 µg of total cell lysates. β-Tubulin serves as a loading control. The blot was incubated with anti-IKBKB antibody (Cat#61572, 1:5,000) and HRP-conjugated goat anti-rabbit secondary antibody (Cat#201, 1:20,000) respectively. Image was developed using NaQ™ ECL Substrate Kit (Cat#716).

### SUPPORT

SUPPORT@GENUINBIOTECH.COM  
TEL: +1-540-855-7041

### ORDERS

SALES@GENUINBIOTECH.COM  
FAX: +1-540-855-7041

[WWW.GENUINBIOTECH.COM](http://WWW.GENUINBIOTECH.COM)