

KD-Validated Anti-Adiponectin receptor 1 Recombinant Rabbit Monoclonal Antibody



Catalog #: 61573

Aliases

ADIPOR1; Adiponectin Receptor 1; PAQR1; ACDCR1; Progestin And AdipoQ Receptor Family Member 1; Progestin And AdipoQ Receptor Family Member I; Adiponectin Receptor Protein 1; TESBP1A; CGI-45; CGI45

Background

Gene Name: ADIPOR1

NCBI Gene Entry: [51094](#)

UniProt Entry: [Q96A54](#)

Application Information

Molecular Weight: Predicted, 43 kDa, observed, 52 kDa

Clonality: Rabbit monoclonal antibody

Clone ID: 23GB3150

Species Reactivity: Human, mouse, rat

Applications Tested: Western blotting (WB), flow cytometry (FCM), immunocytochemistry (IC)

Immunogen

A synthesized peptide derived from human ADIPOR1

Isotype

Rabbit IgG

Storage Buffer

Supplied in PBS (pH 7.4) containing 50% glycerol, and 0.02% sodium azide.

Storage

Store at -20 °C for one year.

Recommended Dilutions

Western Blotting (WB): 1:1,000-1:5,000

Flow Cytometry (FCM): 1:2,000

Immunocytochemistry (IC): 1:100-1:1,000

Note: This product is for research use only.

SUPPORT

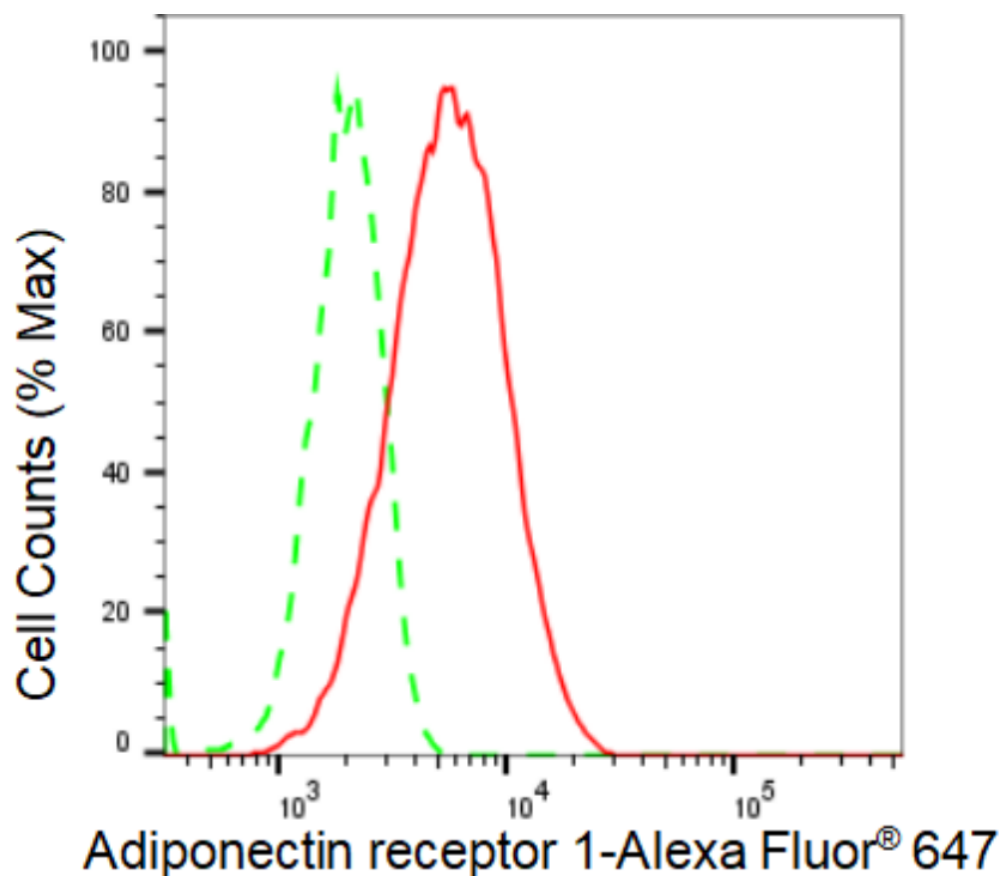
SUPPORT@GENUINBIOTECH.COM
TEL: +1-540-855-7041

ORDERS

SALES@GENUINBIOTECH.COM
FAX: +1-540-855-7041

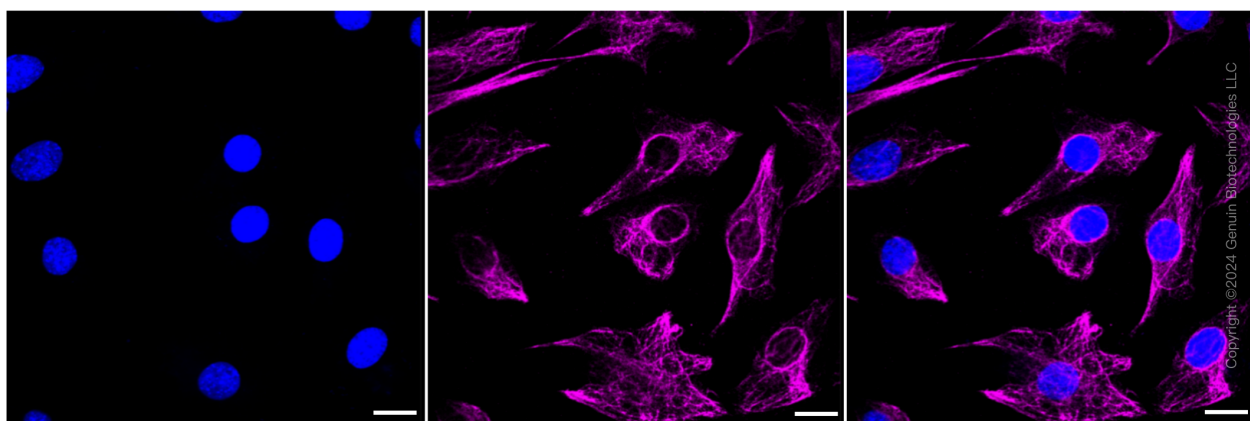
WWW.GENUINBIOTECH.COM

Validation Data



Copyright ©2024 Genuin Biotechnologies LLC

Flow cytometric analysis of Adiponectin receptor 1 expression in C2C12 cells using Adiponectin receptor 1 antibody (Cat#61573, 1:2000). Green, isotype control; red, Adiponectin receptor 1.



Copyright ©2024 Genuin Biotechnologies LLC

Immunocytochemical staining of C2C12 cells with Adiponectin receptor 1 antibody (Cat#61573, 1:1,000). Nuclei were stained blue with DAPI; Adiponectin receptor 1 was stained magenta with Alexa Fluor® 647. Images were taken using Leica stellaris 5. Protein abundance based on laser Intensity and smart gain: High. Scale bar: 20 μ m.

SUPPORT

SUPPORT@GENUINBIOTECH.COM
TEL: +1-540-855-7041

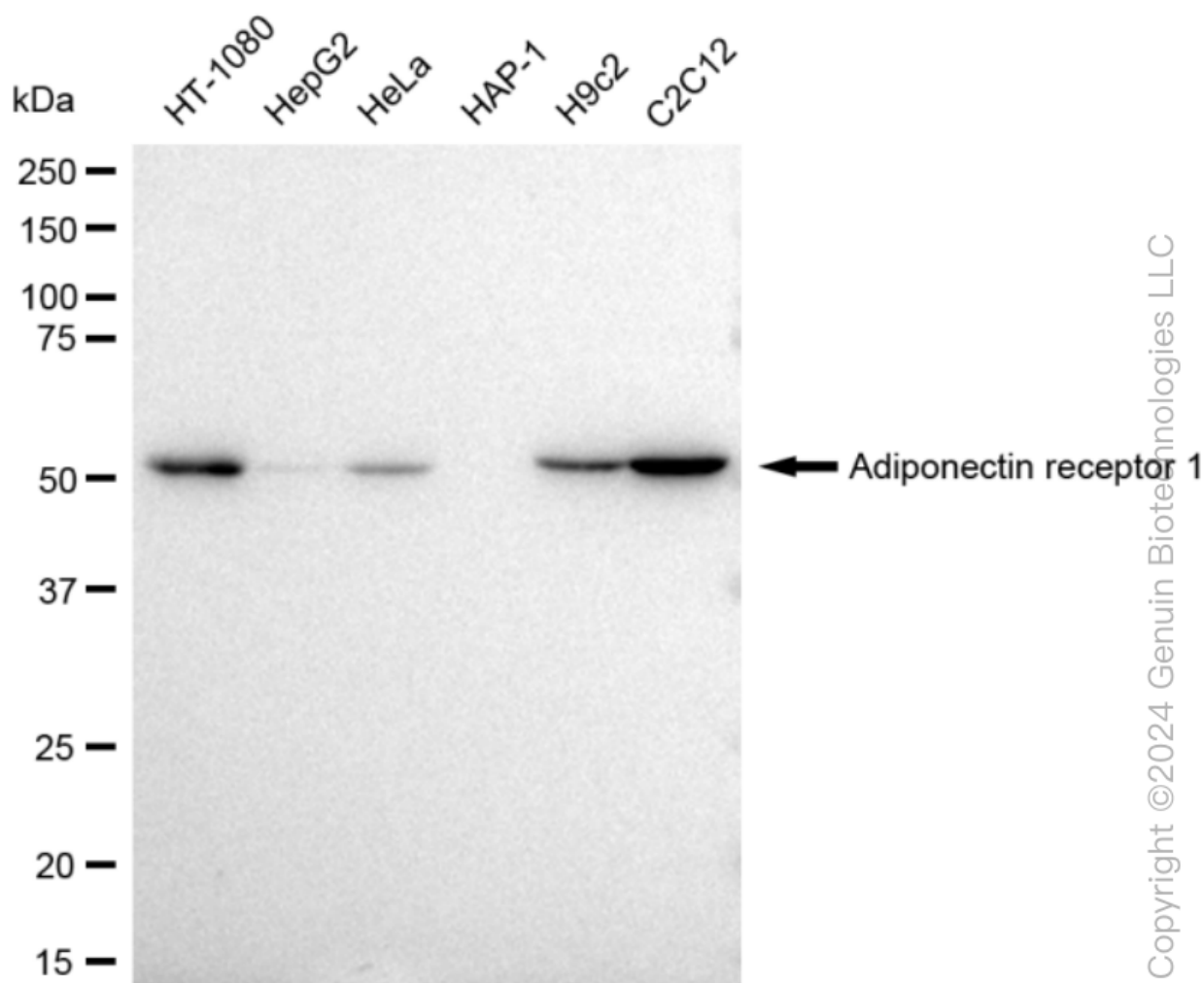
ORDERS

SALES@GENUINBIOTECH.COM
FAX: +1-540-855-7041

WWW.GENUINBIOTECH.COM

KD-Validated Anti-Adiponectin receptor 1 Recombinant Rabbit Monoclonal Antibody

PAGE 3



Western blotting analysis using anti-Adiponectin receptor 1 antibody (Cat#61573). Total cell lysates (30 µg) from various cell lines were loaded and separated by SDS-PAGE. The blot was incubated with anti-Adiponectin receptor 1 antibody (Cat#61573, 1:5,000) and HRP-conjugated goat anti-rabbit secondary antibody (Cat#201, 1:20,000) respectively. Image was developed using FeQ™ ECL Substrate Kit (Cat#226).

SUPPORT

SUPPORT@GENUINBIOTECH.COM
TEL: +1-540-855-7041

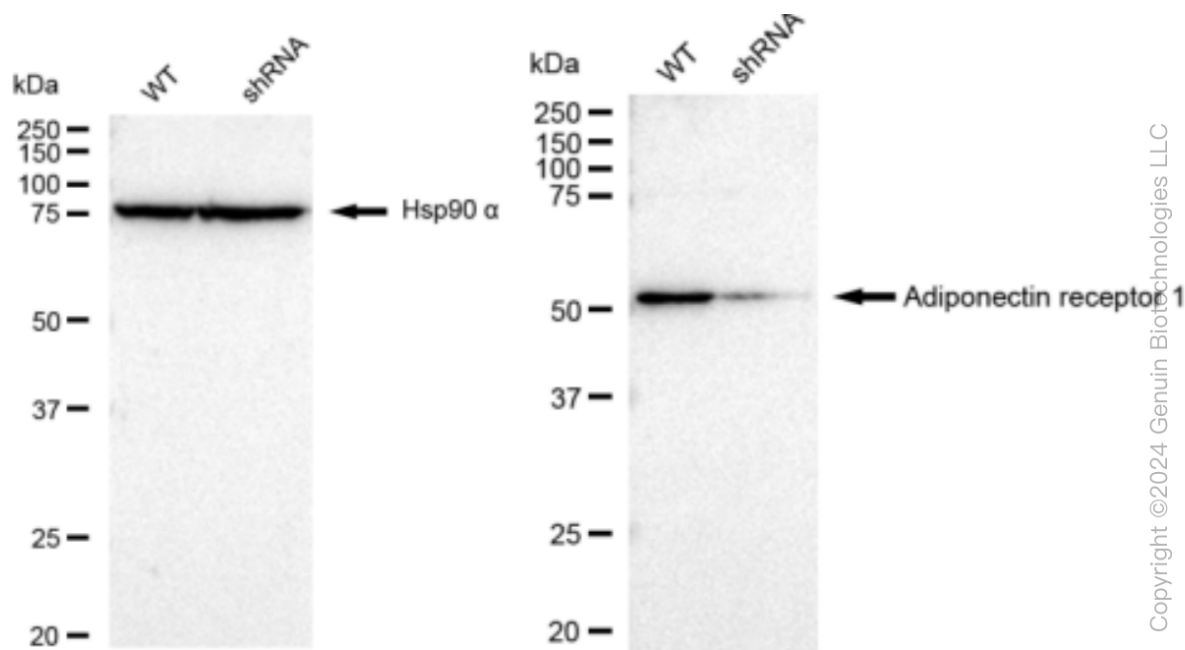
ORDERS

SALES@GENUINBIOTECH.COM
FAX: +1-540-855-7041

WWW.GENUINBIOTECH.COM

KD-Validated Anti-Adiponectin receptor 1 Recombinant Rabbit Monoclonal Antibody

PAGE 4



Western blotting analysis using anti-Adiponectin receptor 1 antibody (Cat#61573). Adiponectin receptor 1 expression in wild type (WT) and Adiponectin receptor 1 shRNA knockdown (KD) HeLa cells with 30 μ g of total cell lysates. Hsp90 α serves as a loading control. The blot was incubated with anti-Adiponectin receptor 1 antibody (Cat#61573, 1:5,000) and HRP-conjugated goat anti-rabbit secondary antibody (Cat#201, 1:20,000) respectively. Image was developed using FeQ™ ECL Substrate Kit (Cat#226).

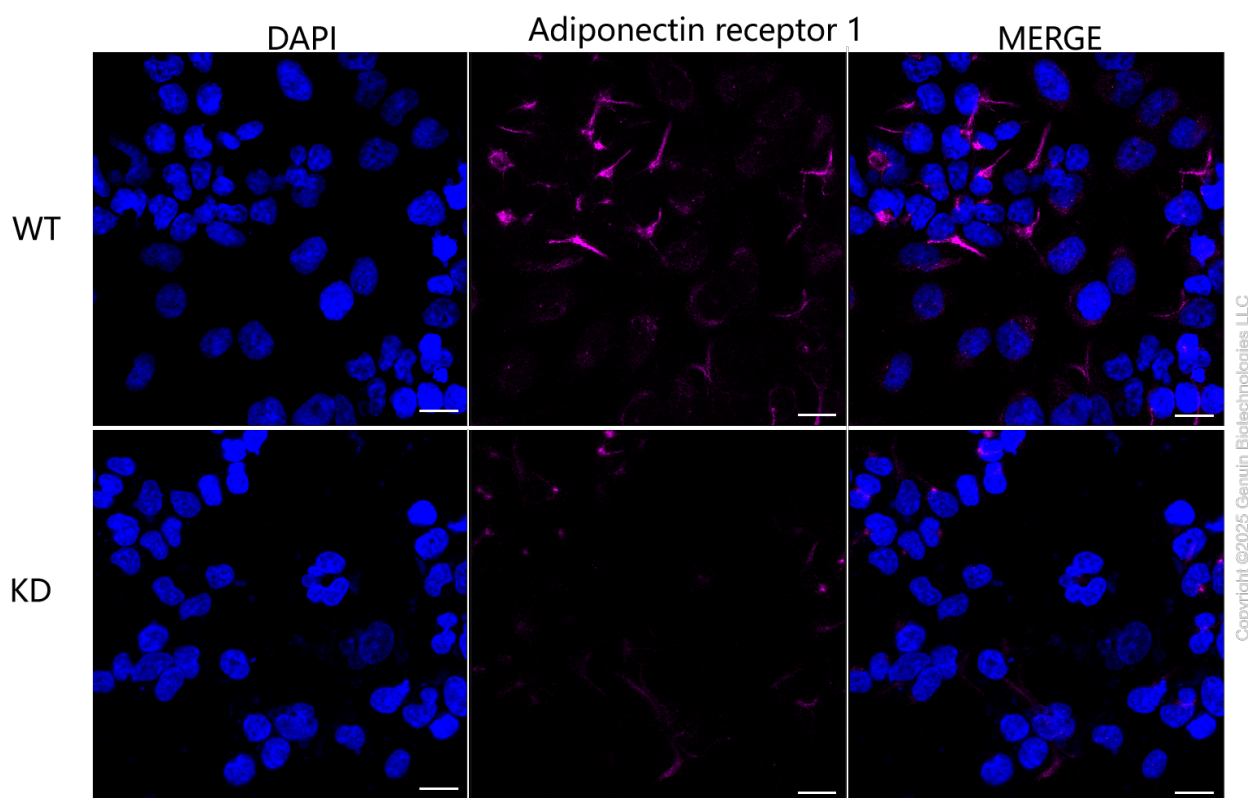
SUPPORT

SUPPORT@GENUINBIOTECH.COM
TEL: +1-540-855-7041

ORDERS

SALES@GENUINBIOTECH.COM
FAX: +1-540-855-7041

WWW.GENUINBIOTECH.COM



Immunocytochemical staining of HeLa cells using anti-Adiponectin receptor 1 antibody (Cat#61573, 1:1,000), Top panel: wild-type (WT); Bottom panel: Adiponectin receptor 1 shRNA knockdown (KD). Nuclei were stained blue with DAPI; Adiponectin receptor 1 was stained magenta with Alexa Fluor® 647. Scale bar, 20 μ m. Permeabilization: Triton.