

KD-Validated Anti-AMBP Recombinant Rabbit Monoclonal Antibody



Catalog #: 61577

Aliases

AMBP; Alpha-1-Microglobulin/Bikunin Precursor; HCP; Protein HC; IATIL; ITILC; EDC1; HI30; ITIL; UTI; Complex-Forming Glycoprotein Heterogeneous In Charge; Inter-Alpha-Trypsin Inhibitor Light Chain; Growth-Inhibiting Protein 19; Uronic-Acid-Rich Protein; Protein AMBP; Trypstatin; Uristatin; Bikunin; ITI; A1M

Background

Gene Name: AMBP

NCBI Gene Entry: [259](#)

UniProt Entry: [P02760](#)

Application Information

Molecular Weight: Predicted, 39 kDa, observed, 39 kDa

Clonality: Rabbit monoclonal antibody

Clone ID: 23GB3200

Species Reactivity: Human

Applications Tested: Western blotting (WB), flow cytometry (FCM), immunocytochemistry (IC)

Immunogen

A synthesized peptide derived from human AMBP

Isotype

Rabbit IgG

Storage Buffer

Supplied in PBS (pH 7.4) containing 50% glycerol, and 0.02% sodium azide.

Storage

Store at -20 °C for one year.

Recommended Dilutions

Western Blotting (WB): 1:1,000-1:5,000

Flow Cytometry (FCM): 1:2,000

Immunocytochemistry (IC): 1:100-1:1,000

SUPPORT

SUPPORT@GENUINBIOTECH.COM
TEL: +1-540-855-7041

ORDERS

SALES@GENUINBIOTECH.COM
FAX: +1-540-855-7041

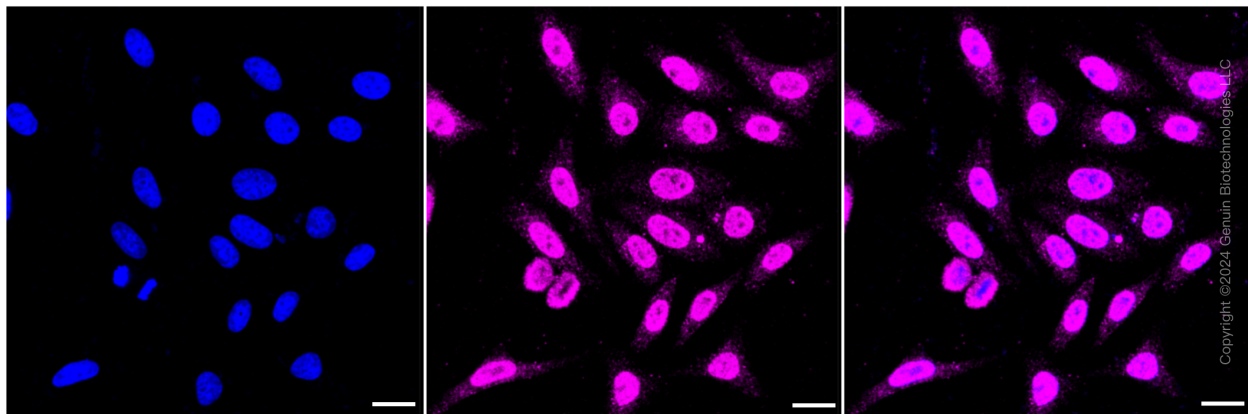
WWW.GENUINBIOTECH.COM

KD-Validated Anti-AMBP Recombinant Rabbit Monoclonal Antibody

PAGE 2

Note: This product is for research use only.

Validation Data



Immunocytochemical staining of HepG2 cells with AMBP antibody (Cat#61577, 1:1,000). Nuclei were stained blue with DAPI; AMBP was stained magenta with Alexa Fluor® 647. Images were taken using Leica stellaris 5. Protein abundance based on laser Intensity and smart gain: Medium. Scale bar: 20 μ m.

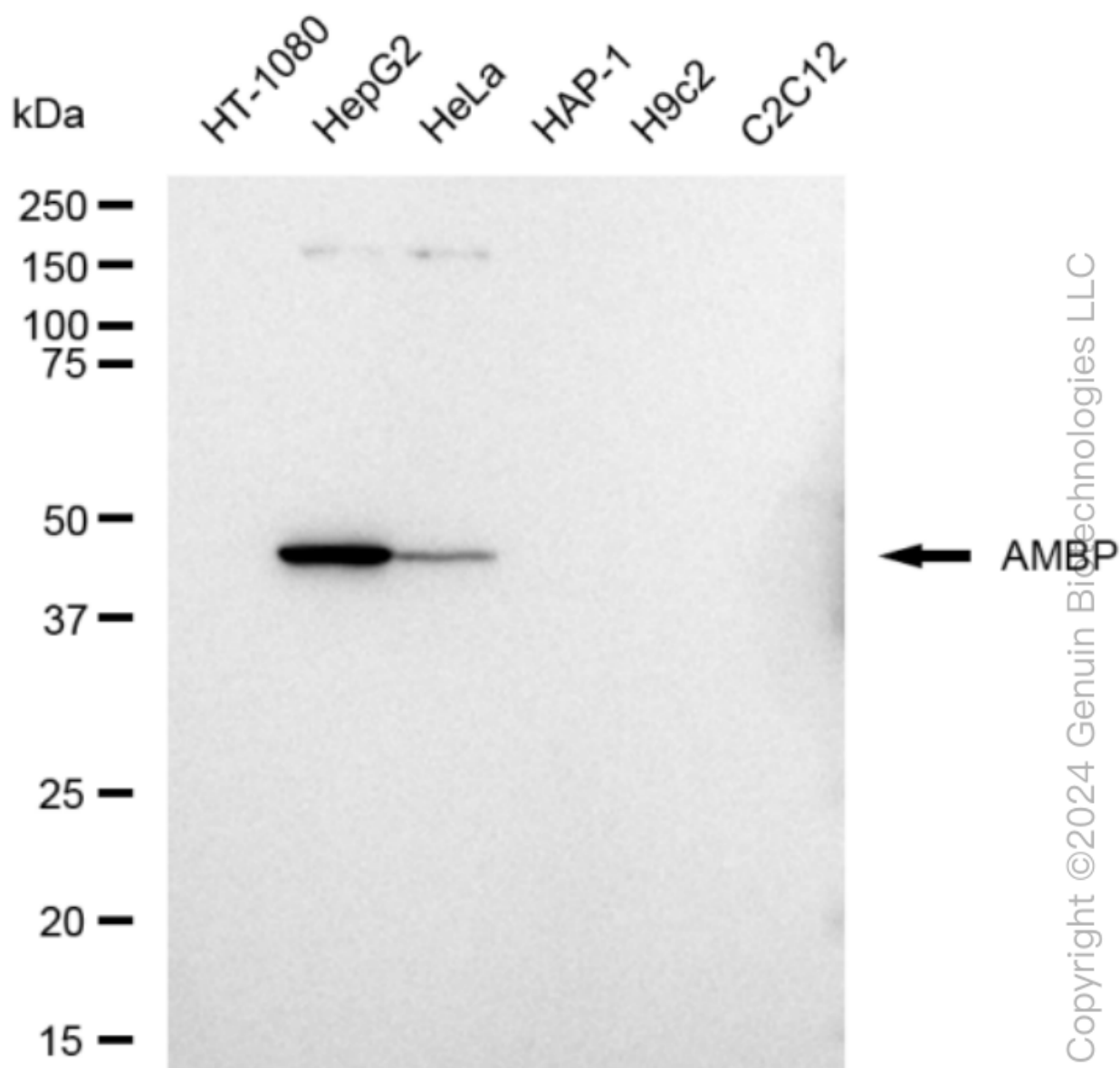
SUPPORT

SUPPORT@GENUINBIOTECH.COM
TEL: +1-540-855-7041

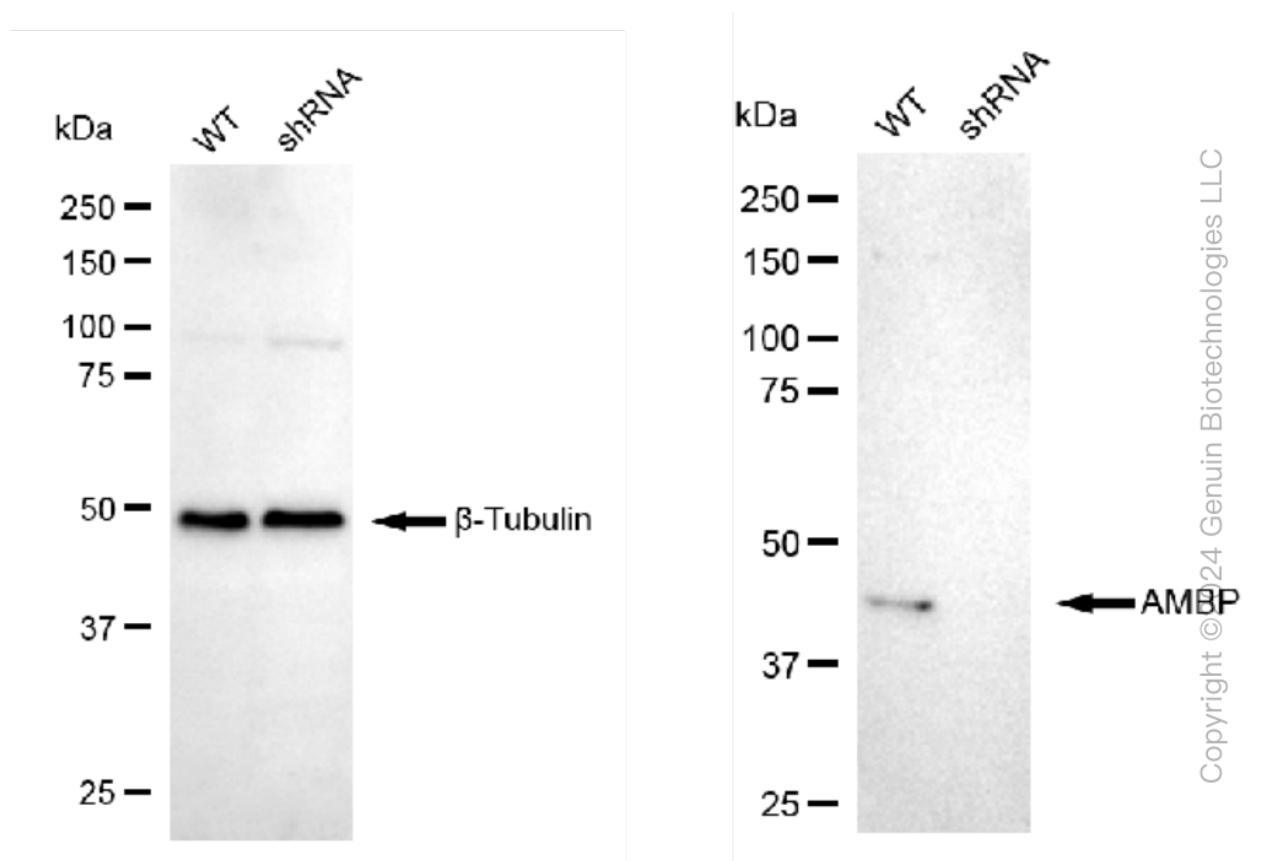
ORDERS

SALES@GENUINBIOTECH.COM
FAX: +1-540-855-7041

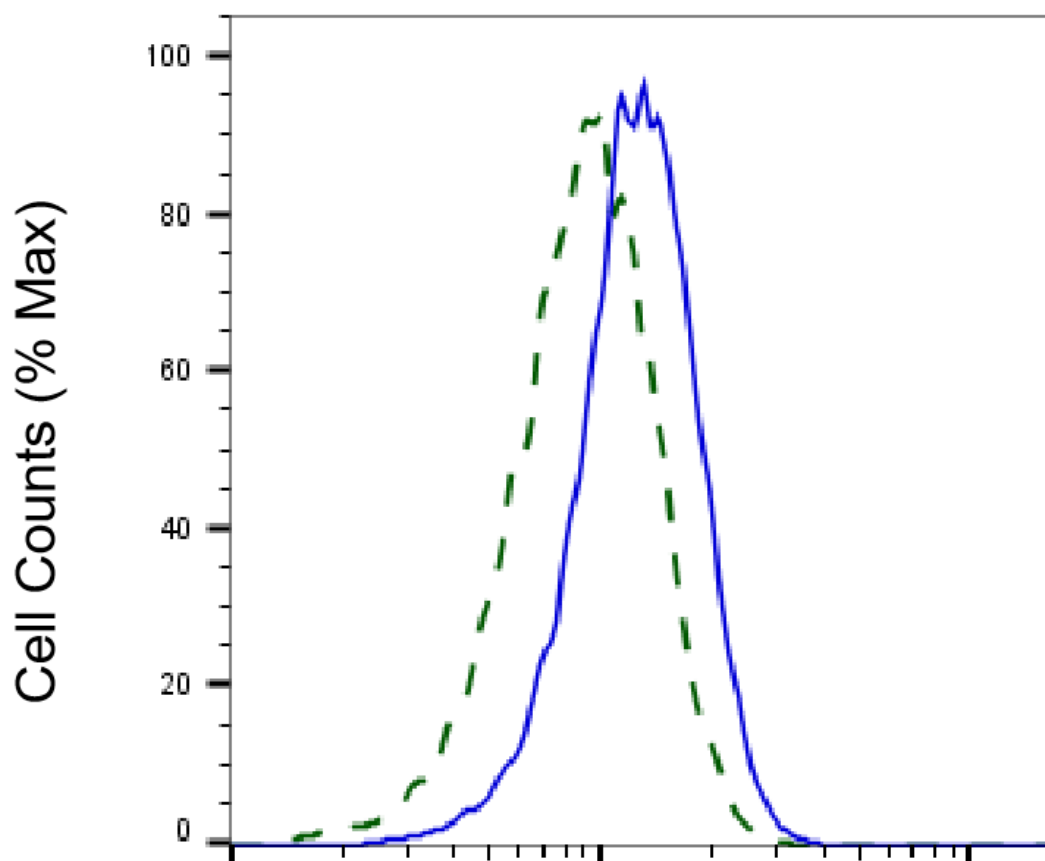
WWW.GENUINBIOTECH.COM



Western blotting analysis using anti-AMBP antibody (Cat#61577). Total cell lysates (30 µg) from various cell lines were loaded and separated by SDS-PAGE. The blot was incubated with anti-AMBP antibody (Cat#61577, 1:5,000) and HRP-conjugated goat anti-rabbit secondary antibody (Cat#201, 1:20,000) respectively. Image was developed using FeQ™ ECL Substrate Kit (Cat#226).



Western blotting analysis using anti-AMBP antibody (Cat#61577). AMBP expression in wild type (WT) and AMBP shRNA knockdown (KD) HeLa cells with 30 μ g of total cell lysates. β -Tubulin serves as a loading control. The blot was incubated with anti-AMBP antibody (Cat#61577, 1:5,000) and HRP-conjugated goat anti-rabbit secondary antibody (Cat#201, 1:20,000) respectively. Image was developed using FeQ™ ECL Substrate Kit (Cat#226).



Copyright ©2025 Genuin Biotechnologies LLC

AMBP-Alexa Fluor® 647

Validation of AMBP knockdown using flow cytometry. Wild-type(WT, Blue) and knockdown(KD, Green) HeLa cells were stained with anti- AMBP antibody (Cat#61577, 1:2,000) and analyzed using BD flow cytometer.